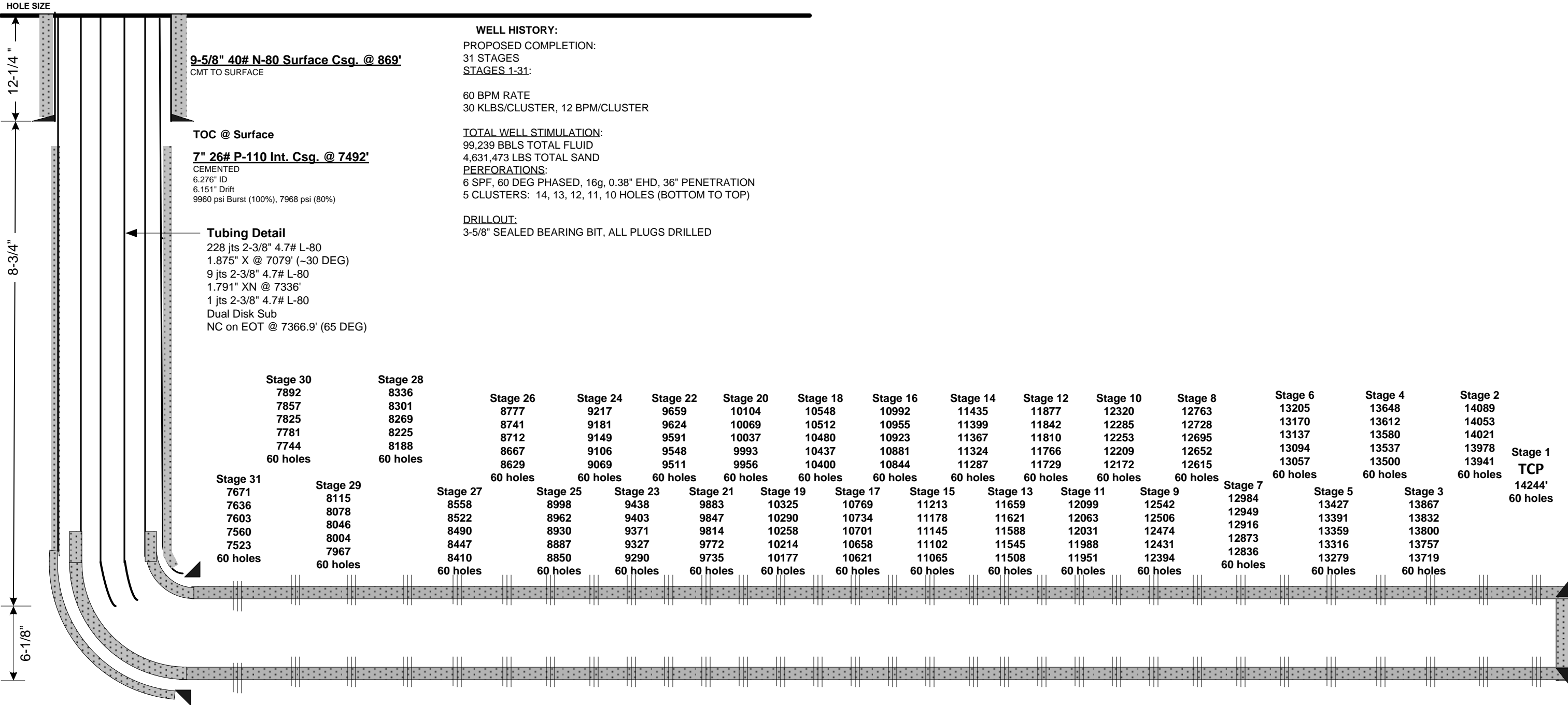


Current Wellbore Schematic
EnCana Oil & Gas (USA) Inc.



WELL : Davis 2B-9H – Cemented Perf/Plug
LOCATION : Lat: 40.154440 Long: -104.78968
COUNTY : WELD STATE: CO
FIELD : Wattenberg - NIOBRARA
ELEVATION : 4882' (GL) 4895' (KB) Δ 13'

SPUD DATE: 5/13/12
COMPL. DATE: July 23, 2012
API #: 05123354600000



Directional Data
KOP: 6700'
30°: 7110'
60°: 7325'
80°: 7450'
90°: 7515'
Max DLS: 21.51°/100' @ 7442' MD
Max TVD: 7169' TVD @ 10,712' MD

4-1/2" 13.5# P-110 DQX Prod. Csg @ 14466'
CEMENTED
3.920" ID
3.795" Drift
12,410 psi Burst (100%), 9928 psi (80%)

TD: 14,476'
PBTD: 14,372' (LC)
TVD: ~7138'
BHT: 240 F

Lateral Length: 6984' (Int. Shoe-TD)