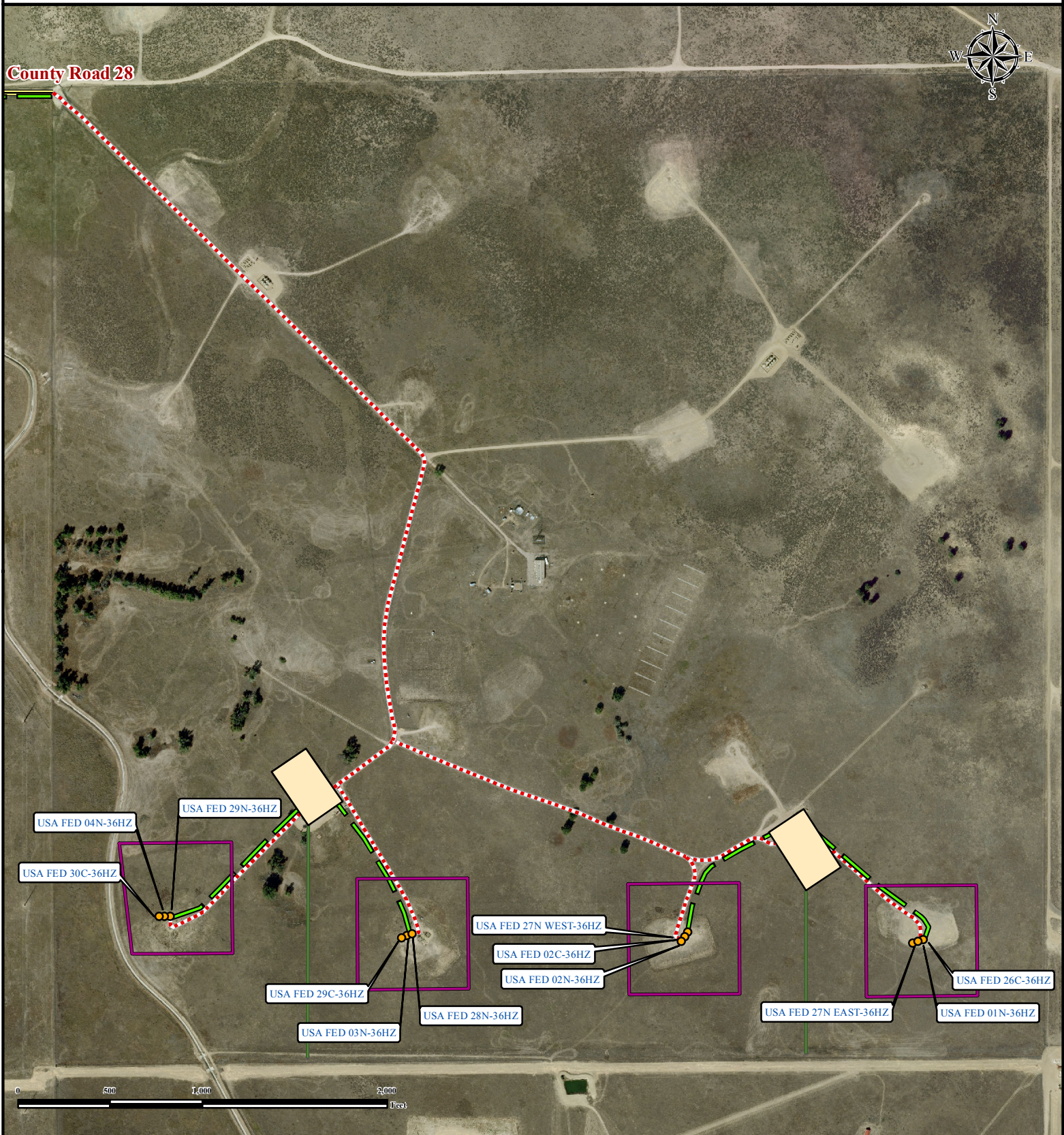


USA FED 02N-36HZ

ACCESS ROAD

SECTION 36, TOWNSHIP 3 NORTH, RANGE 66 WEST OF THE 6TH PRINCIPAL MERIDIAN



Legend	Proposed Flowline	Public Road	Proposed Access Road	Section Boundary
Proposed Well	Proposed Oil Pipeline	Proposed Facility	Proposed Pad	QtrQtr

PFS *Use our resources to find yours!*
www.petro-fs.com
 (303) 928-7128

Field Date: 01/19/2012
 Drafting Date: 01/30/2012
 Drafter: DMM
 Checked By: BHF

Data Sources:
 - Aerial courtesy of Anadarko Petroleum Corporation (2010)

Prepared for: **Anadarko**
 Petroleum Corporation
KERR-MCGEE OIL & GAS ONSHORE LP