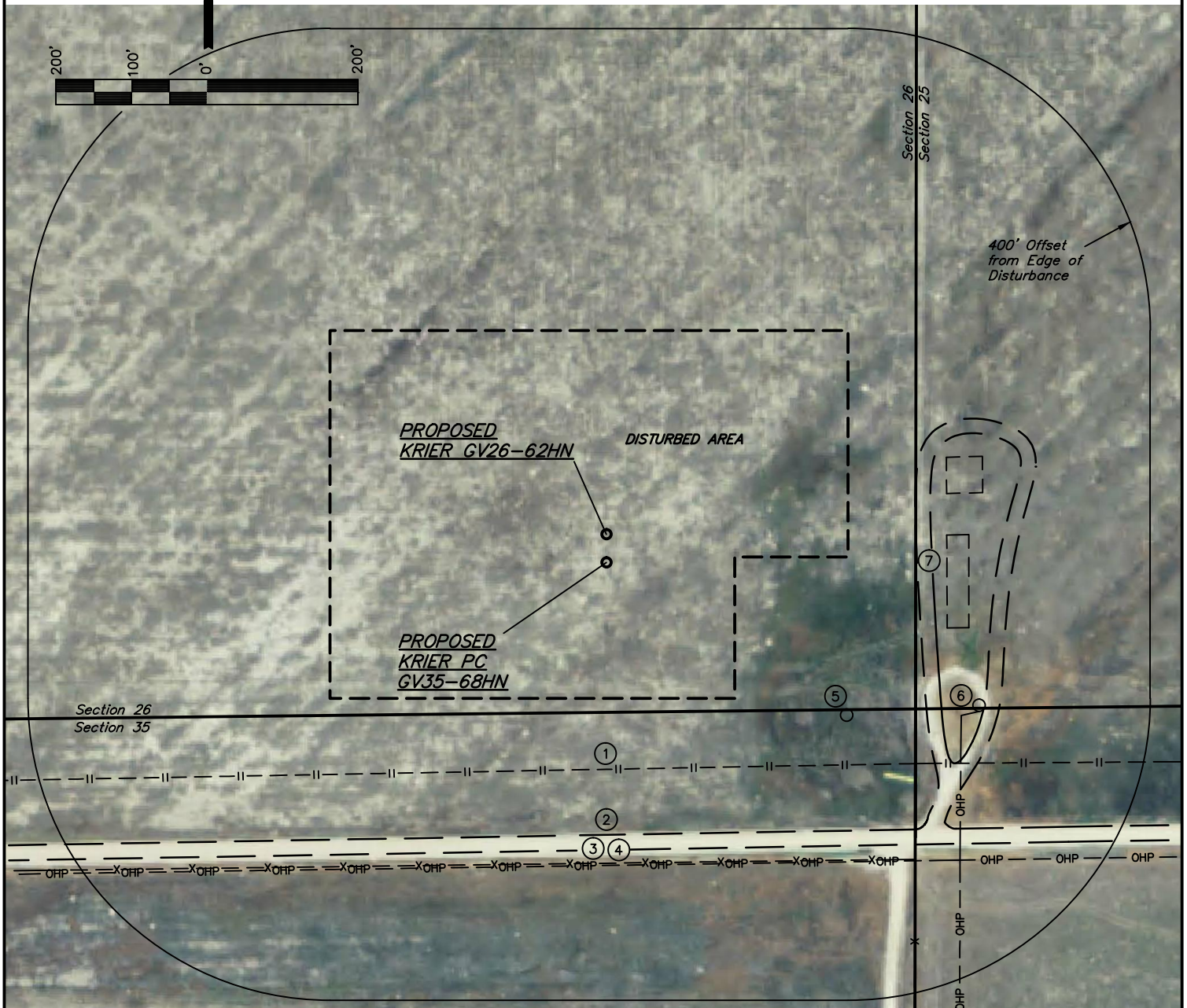


# NOBLE ENERGY, INC.

## LOCATION DRAWING

KRIER GV26-62HN & KRIER PC GV35-68HN  
SECTION 26, T9N, R61W, 6th P.M.

DATE: 07-10-12  
DRAWN BY: B.D.H.  
REV: 01-30-13 J.M.H.



NOTE:  
DIRECTION AND DISTANCE TO IMPROVEMENTS AND NEAREST FEATURES ARE FROM PROPOSED KRIER PC GV35-68HN.

### IMPROVEMENTS:

- |                                |                              |
|--------------------------------|------------------------------|
| ① PIPELINE 275' S              | ⑥ WATER WELL 512' SE         |
| ② ROAD 362' S                  | ⑦ PRODUCTION FACILITY 451' E |
| ③ FENCE 399' S                 |                              |
| ④ POWER LINE 401' S, 512' SE   |                              |
| ⑤ ABANDONED WATER WELL 377' SE |                              |

### PAD DETAILS:

WELL HEAD SPACING = 37.5'

NEAREST FEATURE: BUILDING 3552' SW, PUBLIC  
ROAD 362' S (CR 100), ABOVE GROUND UTILITY 401'  
S, RAILROAD 5280' +, PROPERTY LINE 199' S

UINTAH ENGINEERING & LAND SURVEYING  
85 So. 200 East \* Vernal, Utah 84078 \* (435) 789-1017