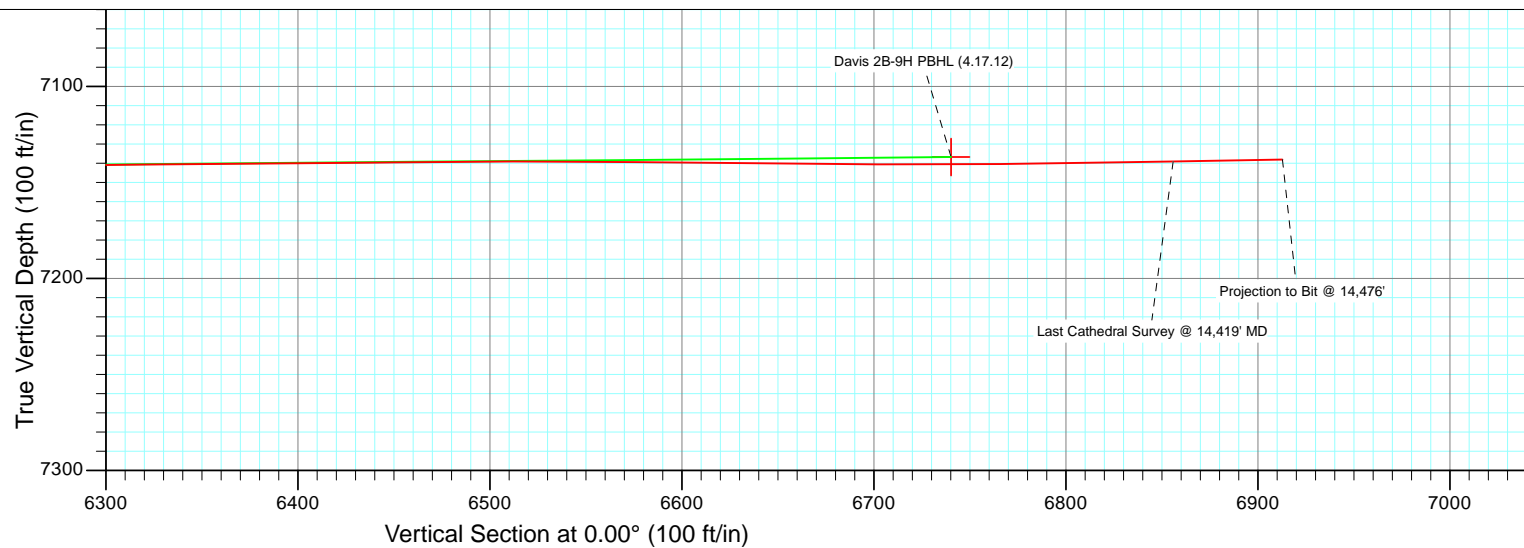
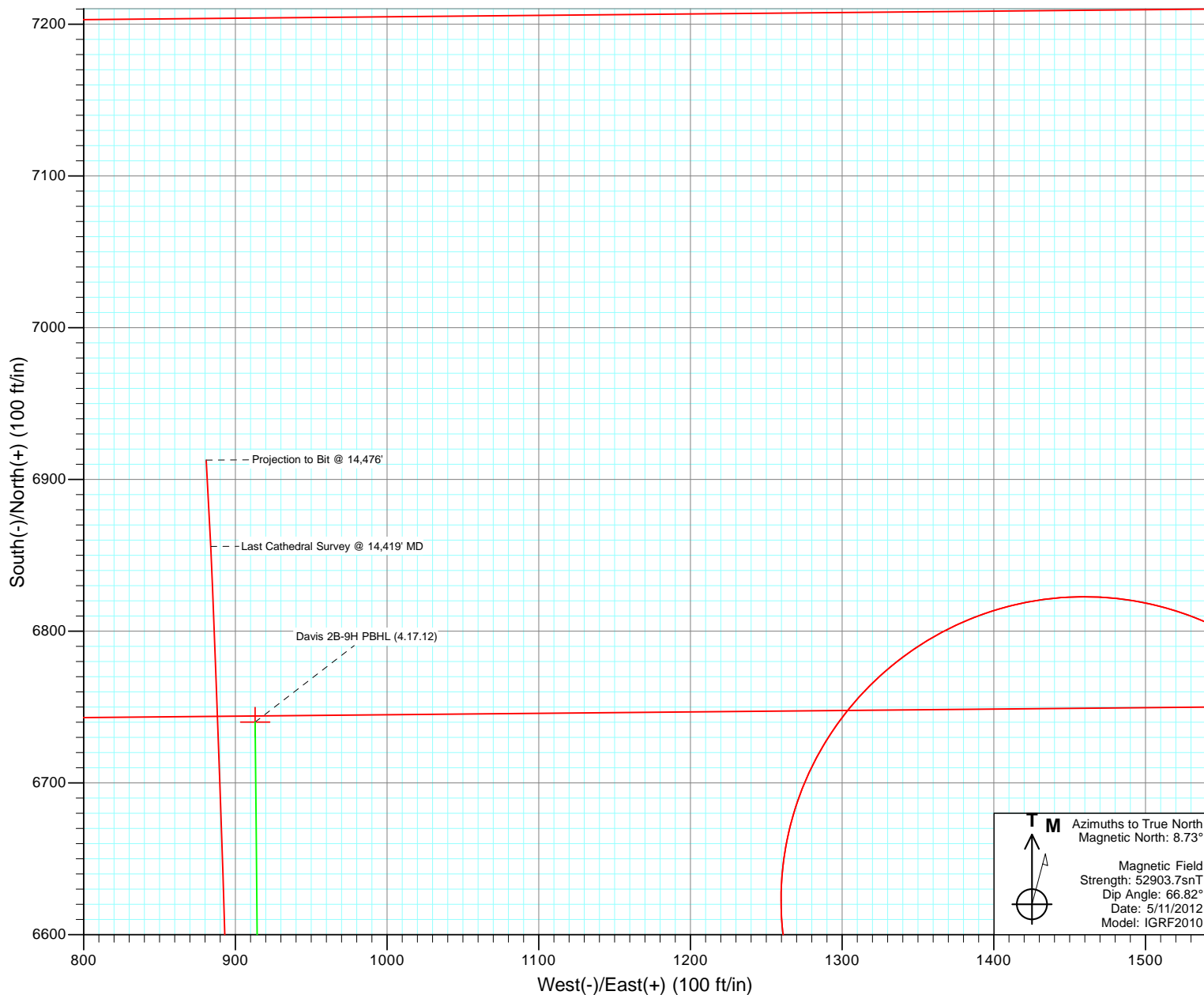


<div> <div>HZ</div> <div>Davis 2B-9H</div> <div>125322: 140655, DN</div> <div>KBE @ 4895.0H (Ensign 135)</div> <div>GL @ 4882.0</div> <div>North American Datum 1983</div> <div>Well Davis 2B-9H, True North</div> </div>							
Type	Target	Azimuth	Origin	Type	N/S	E/W	From
User	No Target (Freehand)	0.00	Point	Spot	0.0	0.0	TVD
Name		TVD	+N/-S	+E/-W	Latitude	Longitude	
Davis 2B-9H PBHL (4.17.12)	7136.9	6740.2	913.0	40.172943	-104.766430		
Interp @ 7161.0 (Davis 2B-9H HZ Plan #3)	7161.0	3952.0	912.3	40.165289	-104.786430		



Project: DJ Wattenberg  
Site: SWNW S9-T2N-R66W (Davis)  
Well: Davis 2B-9H  
Wellbore: HZ  
Design: FINAL



# Cathedral Energy Services

## Survey Report

<b>Company:</b>	EnCana Oil & Gas (USA) Inc	<b>Local Co-ordinate Reference:</b>	Well Davis 2B-9H
<b>Project:</b>	DJ Wattenberg	<b>TVD Reference:</b>	KBE @ 4895.0ft (Ensign 135)
<b>Site:</b>	SWNW S9-T2N-R66W (Davis)	<b>MD Reference:</b>	KBE @ 4895.0ft (Ensign 135)
<b>Well:</b>	Davis 2B-9H	<b>North Reference:</b>	True
<b>Wellbore:</b>	HZ	<b>Survey Calculation Method:</b>	Minimum Curvature
<b>Design:</b>	HZ	<b>Database:</b>	USA EDM 5000 Multi Users DB

<b>Project</b>	DJ Wattenberg		
<b>Map System:</b>	US State Plane 1983	<b>System Datum:</b>	Mean Sea Level
<b>Geo Datum:</b>	North American Datum 1983		
<b>Map Zone:</b>	Colorado Northern Zone		

Site		SWNW S9-T2N-R66W (Davis)			
Site Position:		Northing:	1,299,903.26 ft	Latitude:	40.154440
From:	Lat/Long	Easting:	3,198,510.39 ft	Longitude:	-104.789830
Position Uncertainty:	0.0 ft	Slot Radius:	13.200 in	Grid Convergence:	0.46 °

Well	Davis 2B-9H					
Well Position	+N/-S	0.0 ft	Northing:	1,299,903.53 ft	Latitude:	40.154440
	+E/-W	0.0 ft	Easting:	3,198,547.39 ft	Longitude:	-104.789698
Position Uncertainty		0.0 ft	Wellhead Elevation:	ft	Ground Level:	4,882.0 ft

<b>Wellbore</b>	HZ				
<b>Magnetics</b>	<b>Model Name</b>	<b>Sample Date</b>	<b>Declination (°)</b>	<b>Dip Angle (°)</b>	<b>Field Strength (nT)</b>
	IGRF2010	5/11/2012	8.73	66.82	52,904

<b>Design</b>	HZ				
<b>Audit Notes:</b>					
<b>Version:</b>	1.0	<b>Phase:</b>	ACTUAL	<b>Tie On Depth:</b>	0.0
<b>Vertical Section:</b>	<b>Depth From (TVD)</b>	<b>+N/-S</b>	<b>+E/-W</b>	<b>Direction</b>	
	(ft)	(ft)	(ft)	(°)	
	0.0	0.0	0.0	0.00	

<b>Survey Program</b>	<b>Date</b>	6/4/2012			
<b>From (ft)</b>	<b>To (ft)</b>	<b>Survey (Wellbore)</b>	<b>Tool Name</b>	<b>Description</b>	
100.0	828.0	Survey #1 (HZ)	Gyro	Gyro	
897.0	14,476.0	Survey #2 (HZ)	MWD	Geolink MWD	

<b>Survey</b>										
<b>Measured Depth (ft)</b>	<b>Inclination (°)</b>	<b>Azimuth (°)</b>	<b>Vertical Depth (ft)</b>	<b>+N/-S (ft)</b>	<b>+E/-W (ft)</b>	<b>Vertical Section (ft)</b>	<b>Dogleg Rate (°/100ft)</b>	<b>Build Rate (°/100ft)</b>	<b>Formations / Comments</b>	
0.0	0.00	0.00	0.0	0.0	0.0	0.0	0.00	0.00		
100.0	0.46	222.87	100.0	-0.3	-0.3	-0.3	0.46	0.46		
200.0	0.39	277.14	200.0	-0.5	-0.9	-0.5	0.39	-0.07		
300.0	0.50	254.82	300.0	-0.6	-1.6	-0.6	0.20	0.11		
400.0	0.53	250.35	400.0	-0.9	-2.5	-0.9	0.05	0.03		
500.0	0.63	265.84	500.0	-1.1	-3.5	-1.1	0.19	0.10		
600.0	0.88	257.27	600.0	-1.3	-4.8	-1.3	0.27	0.25		
700.0	0.95	273.22	700.0	-1.4	-6.4	-1.4	0.26	0.07		
800.0	1.35	270.36	799.9	-1.4	-8.4	-1.4	0.40	0.40		
828.0	1.55	270.10	827.9	-1.4	-9.1	-1.4	0.71	0.71	Last Gyro Survey @ 828' MD	
897.0	1.20	266.30	896.9	-1.4	-10.7	-1.4	0.52	-0.51		
991.0	1.00	269.50	990.9	-1.5	-12.5	-1.5	0.22	-0.21		

# Cathedral Energy Services

## Survey Report

<b>Company:</b>	EnCana Oil & Gas (USA) Inc	<b>Local Co-ordinate Reference:</b>	Well Davis 2B-9H
<b>Project:</b>	DJ Wattenberg	<b>TVD Reference:</b>	KBE @ 4895.0ft (Ensign 135)
<b>Site:</b>	SWNW S9-T2N-R66W (Davis)	<b>MD Reference:</b>	KBE @ 4895.0ft (Ensign 135)
<b>Well:</b>	Davis 2B-9H	<b>North Reference:</b>	True
<b>Wellbore:</b>	HZ	<b>Survey Calculation Method:</b>	Minimum Curvature
<b>Design:</b>	HZ	<b>Database:</b>	USA EDM 5000 Multi Users DB

Survey									
Measured Depth (ft)	Inclination (°)	Azimuth (°)	Vertical Depth (ft)	+N/-S (ft)	+E/-W (ft)	Vertical Section (ft)	Dogleg Rate (°/100ft)	Build Rate (°/100ft)	Formations / Comments
1,082.0	1.40	271.60	1,081.9	-1.4	-14.4	-1.4	0.44	0.44	
1,174.0	1.80	144.10	1,173.9	-2.6	-14.7	-2.6	3.13	0.43	
1,265.0	4.00	125.90	1,264.7	-5.6	-11.3	-5.6	2.59	2.42	
1,357.0	5.60	112.80	1,356.4	-9.2	-4.6	-9.2	2.10	1.74	
1,449.0	8.30	112.70	1,447.7	-13.5	5.7	-13.5	2.93	2.93	
1,544.0	11.30	116.60	1,541.3	-20.3	20.4	-20.3	3.23	3.16	
1,639.0	12.20	115.10	1,634.3	-28.8	37.8	-28.8	1.00	0.95	
1,734.0	13.70	117.50	1,726.9	-38.2	56.8	-38.2	1.68	1.58	
1,829.0	14.60	118.00	1,819.0	-49.0	77.4	-49.0	0.96	0.95	
1,925.0	15.50	116.80	1,911.7	-60.5	99.5	-60.5	0.99	0.94	
2,020.0	15.00	116.00	2,003.4	-71.6	121.9	-71.6	0.57	-0.53	
2,115.0	15.10	115.30	2,095.1	-82.3	144.1	-82.3	0.22	0.11	
2,210.0	15.00	113.90	2,186.9	-92.6	166.6	-92.6	0.40	-0.11	
2,305.0	15.30	115.90	2,278.6	-103.0	189.1	-103.0	0.63	0.32	
2,401.0	15.30	111.60	2,371.2	-113.2	212.3	-113.2	1.18	0.00	
2,496.0	14.80	113.90	2,462.9	-122.7	235.0	-122.7	0.82	-0.53	
2,591.0	14.50	117.10	2,554.8	-133.1	256.7	-133.1	0.91	-0.32	
2,686.0	14.30	116.30	2,646.9	-143.7	277.8	-143.7	0.30	-0.21	
2,781.0	16.00	118.80	2,738.6	-155.2	299.8	-155.2	1.92	1.79	
2,877.0	15.40	118.00	2,831.0	-167.6	322.6	-167.6	0.66	-0.62	
2,972.0	15.60	121.80	2,922.5	-180.2	344.6	-180.2	1.09	0.21	
3,067.0	16.10	122.50	3,013.9	-194.0	366.6	-194.0	0.56	0.53	
3,162.0	14.20	113.60	3,105.6	-205.8	388.4	-205.8	3.16	-2.00	
3,257.0	14.10	115.10	3,197.7	-215.3	409.5	-215.3	0.40	-0.11	
3,353.0	14.20	119.40	3,290.8	-226.1	430.4	-226.1	1.10	0.10	
3,448.0	13.70	124.10	3,383.0	-238.1	449.9	-238.1	1.30	-0.53	
3,543.0	13.40	120.70	3,475.4	-250.0	468.6	-250.0	0.90	-0.32	
3,638.0	12.70	118.40	3,567.9	-260.6	487.3	-260.6	0.92	-0.74	
3,702.0	12.20	117.00	3,630.4	-267.0	499.5	-267.0	0.91	-0.78	
3,733.0	12.40	117.30	3,660.7	-270.1	505.4	-270.1	0.68	0.65	
3,797.0	13.10	115.00	3,723.1	-276.3	518.1	-276.3	1.35	1.09	
3,860.0	13.80	117.00	3,784.4	-282.7	531.2	-282.7	1.33	1.11	
3,955.0	14.90	121.10	3,876.4	-294.2	551.8	-294.2	1.58	1.16	
4,051.0	14.50	116.00	3,969.3	-305.8	573.1	-305.8	1.41	-0.42	
4,146.0	16.30	113.40	4,060.9	-316.3	596.1	-316.3	2.03	1.89	
4,241.0	15.70	113.10	4,152.2	-326.6	620.1	-326.6	0.64	-0.63	
4,336.0	13.20	113.10	4,244.2	-335.9	641.9	-335.9	2.63	-2.63	
4,432.0	13.30	114.60	4,337.6	-344.8	662.1	-344.8	0.37	0.10	
4,622.0	14.10	116.70	4,522.2	-364.3	702.6	-364.3	0.50	0.42	
4,717.0	15.20	117.50	4,614.1	-375.3	724.0	-375.3	1.18	1.16	
4,812.0	16.00	116.60	4,705.6	-386.9	746.7	-386.9	0.88	0.84	
4,908.0	13.80	115.10	4,798.4	-397.7	768.9	-397.7	2.33	-2.29	
5,003.0	14.50	111.60	4,890.5	-406.9	790.3	-406.9	1.16	0.74	
5,098.0	14.90	112.60	4,982.4	-415.9	812.6	-415.9	0.50	0.42	
5,193.0	15.50	115.80	5,074.1	-426.2	835.3	-426.2	1.09	0.63	
5,288.0	13.80	114.90	5,166.0	-436.5	857.0	-436.5	1.81	-1.79	
5,384.0	11.10	110.70	5,259.7	-444.5	876.0	-444.5	2.96	-2.81	
5,479.0	10.60	116.00	5,353.0	-451.6	892.5	-451.6	1.17	-0.53	
5,574.0	9.60	113.60	5,446.6	-458.6	907.6	-458.6	1.14	-1.05	
5,669.0	6.90	118.20	5,540.6	-464.5	919.9	-464.5	2.92	-2.84	
5,765.0	5.40	114.10	5,636.0	-469.1	929.1	-469.1	1.63	-1.56	
5,860.0	4.20	112.40	5,730.7	-472.2	936.4	-472.2	1.27	-1.26	
5,955.0	3.80	125.00	5,825.5	-475.3	942.2	-475.3	1.01	-0.42	

# Cathedral Energy Services

## Survey Report

<b>Company:</b>	EnCana Oil & Gas (USA) Inc	<b>Local Co-ordinate Reference:</b>	Well Davis 2B-9H
<b>Project:</b>	DJ Wattenberg	<b>TVD Reference:</b>	KBE @ 4895.0ft (Ensign 135)
<b>Site:</b>	SWNW S9-T2N-R66W (Davis)	<b>MD Reference:</b>	KBE @ 4895.0ft (Ensign 135)
<b>Well:</b>	Davis 2B-9H	<b>North Reference:</b>	True
<b>Wellbore:</b>	HZ	<b>Survey Calculation Method:</b>	Minimum Curvature
<b>Design:</b>	HZ	<b>Database:</b>	USA EDM 5000 Multi Users DB

Survey									
Measured Depth (ft)	Inclination (°)	Azimuth (°)	Vertical Depth (ft)	+N/-S (ft)	+E/-W (ft)	Vertical Section (ft)	Dogleg Rate (°/100ft)	Build Rate (°/100ft)	Formations / Comments
6,050.0	1.80	116.50	5,920.3	-477.8	946.1	-477.8	2.14	-2.11	
6,145.0	0.70	146.40	6,015.3	-479.0	947.7	-479.0	1.31	-1.16	
6,241.0	1.20	97.20	6,111.3	-479.6	949.0	-479.6	0.95	0.52	
6,336.0	1.50	99.40	6,206.3	-479.9	951.3	-479.9	0.32	0.32	
6,431.0	0.80	34.90	6,301.3	-479.6	952.9	-479.6	1.43	-0.74	
6,526.0	1.00	85.80	6,396.3	-478.9	954.1	-478.9	0.84	0.21	
6,621.0	1.00	90.40	6,491.2	-478.9	955.7	-478.9	0.08	0.00	
6,653.0	0.40	79.00	6,523.2	-478.9	956.1	-478.9	1.92	-1.87	
6,685.0	0.70	327.80	6,555.2	-478.7	956.1	-478.7	2.89	0.94	
6,716.0	1.90	344.80	6,586.2	-478.0	955.9	-478.0	4.02	3.87	
6,748.0	4.40	4.90	6,618.2	-476.3	955.9	-476.3	8.42	7.81	
6,780.0	7.00	11.70	6,650.0	-473.2	956.4	-473.2	8.38	8.12	
6,812.0	9.70	12.70	6,681.7	-468.6	957.3	-468.6	8.45	8.44	
6,843.0	12.90	11.80	6,712.1	-462.7	958.6	-462.7	10.34	10.32	
6,875.0	15.00	12.10	6,743.1	-455.1	960.2	-455.1	6.57	6.56	
6,907.0	16.30	10.40	6,773.9	-446.7	961.9	-446.7	4.31	4.06	
6,939.0	17.20	6.50	6,804.6	-437.6	963.2	-437.6	4.50	2.81	
6,970.0	18.90	4.20	6,834.1	-428.0	964.1	-428.0	5.95	5.48	
7,002.0	20.80	4.10	6,864.2	-417.2	964.9	-417.2	5.94	5.94	
7,034.0	22.50	2.80	6,893.9	-405.4	965.6	-405.4	5.52	5.31	
7,066.0	25.30	0.80	6,923.1	-392.4	966.0	-392.4	9.11	8.75	
7,096.0	28.60	359.80	6,949.9	-378.8	966.1	-378.8	11.10	11.00	
7,128.0	32.90	358.40	6,977.4	-362.5	965.8	-362.5	13.62	13.44	
7,160.0	37.80	358.60	7,003.5	-344.0	965.3	-344.0	15.32	15.31	
7,192.0	41.40	359.10	7,028.1	-323.6	964.9	-323.6	11.29	11.25	
7,223.0	42.90	0.30	7,051.1	-302.8	964.8	-302.8	5.49	4.84	
7,255.0	46.10	359.30	7,073.9	-280.4	964.7	-280.4	10.24	10.00	
7,287.0	50.30	358.60	7,095.3	-256.5	964.3	-256.5	13.23	13.12	
7,319.0	55.30	357.70	7,114.6	-231.0	963.5	-231.0	15.78	15.62	
7,350.0	61.60	357.40	7,130.8	-204.7	962.3	-204.7	20.34	20.32	
7,382.0	67.80	359.10	7,144.5	-175.8	961.5	-175.8	19.96	19.37	
7,414.0	74.10	0.60	7,154.9	-145.5	961.4	-145.5	20.18	19.69	
7,442.0	79.80	2.60	7,161.2	-118.3	962.2	-118.3	21.51	20.36	
7,496.0	89.60	2.30	7,166.2	-64.6	964.5	-64.6	18.16	18.15	
7,516.0	90.10	2.10	7,166.3	-44.6	965.2	-44.6	2.69	2.50	
7,577.0	90.40	2.00	7,166.0	16.3	967.4	16.3	0.52	0.49	
7,638.0	89.60	1.30	7,166.0	77.3	969.2	77.3	1.74	-1.31	
7,700.0	90.00	0.80	7,166.2	139.3	970.3	139.3	1.03	0.65	
7,761.0	90.80	0.60	7,165.8	200.3	971.0	200.3	1.35	1.31	
7,823.0	90.40	0.60	7,165.1	262.3	971.7	262.3	0.65	-0.65	
7,884.0	92.00	359.60	7,163.9	323.3	971.8	323.3	3.09	2.62	
7,945.0	92.40	358.80	7,161.5	384.2	970.9	384.2	1.47	0.66	
8,006.0	91.80	358.00	7,159.3	445.1	969.2	445.1	1.64	-0.98	
8,067.0	91.20	357.70	7,157.7	506.1	967.0	506.1	1.10	-0.98	
8,128.0	89.00	357.70	7,157.6	567.0	964.5	567.0	3.61	-3.61	
8,189.0	89.10	357.30	7,158.6	628.0	961.8	628.0	0.68	0.16	
8,251.0	88.40	356.70	7,160.0	689.9	958.6	689.9	1.49	-1.13	
8,312.0	89.00	356.20	7,161.3	750.7	954.8	750.7	1.28	0.98	
8,373.0	89.90	356.20	7,161.9	811.6	950.8	811.6	1.48	1.48	
8,434.0	90.40	357.00	7,161.8	872.5	947.2	872.5	1.55	0.82	
8,495.0	90.40	358.20	7,161.3	933.4	944.6	933.4	1.97	0.00	
8,556.0	89.40	359.90	7,161.4	994.4	943.6	994.4	3.23	-1.64	
8,617.0	89.40	0.20	7,162.1	1,055.4	943.7	1,055.4	0.49	0.00	

# Cathedral Energy Services

## Survey Report

<b>Company:</b>	EnCana Oil & Gas (USA) Inc	<b>Local Co-ordinate Reference:</b>	Well Davis 2B-9H
<b>Project:</b>	DJ Wattenberg	<b>TVD Reference:</b>	KBE @ 4895.0ft (Ensign 135)
<b>Site:</b>	SWNW S9-T2N-R66W (Davis)	<b>MD Reference:</b>	KBE @ 4895.0ft (Ensign 135)
<b>Well:</b>	Davis 2B-9H	<b>North Reference:</b>	True
<b>Wellbore:</b>	HZ	<b>Survey Calculation Method:</b>	Minimum Curvature
<b>Design:</b>	HZ	<b>Database:</b>	USA EDM 5000 Multi Users DB

Survey									
Measured Depth (ft)	Inclination (°)	Azimuth (°)	Vertical Depth (ft)	+N/-S (ft)	+E/-W (ft)	Vertical Section (ft)	Dogleg Rate (°/100ft)	Build Rate (°/100ft)	Formations / Comments
8,680.0	90.10	359.60	7,162.4	1,118.4	943.5	1,118.4	1.46	1.11	
8,744.0	90.40	359.40	7,162.1	1,182.4	943.0	1,182.4	0.56	0.47	
8,807.0	90.20	359.70	7,161.7	1,245.4	942.5	1,245.4	0.57	-0.32	
8,871.0	89.60	0.20	7,161.9	1,309.4	942.4	1,309.4	1.22	-0.94	
8,934.0	89.70	359.50	7,162.2	1,372.4	942.3	1,372.4	1.12	0.16	
8,998.0	90.20	359.30	7,162.3	1,436.4	941.6	1,436.4	0.84	0.78	
9,061.0	90.40	358.90	7,162.0	1,499.4	940.6	1,499.4	0.71	0.32	
9,125.0	91.00	358.30	7,161.2	1,563.4	939.0	1,563.4	1.33	0.94	
9,188.0	90.50	358.70	7,160.4	1,626.3	937.4	1,626.3	1.02	-0.79	
9,252.0	90.50	358.40	7,159.8	1,690.3	935.8	1,690.3	0.47	0.00	
9,315.0	90.90	358.40	7,159.0	1,753.3	934.0	1,753.3	0.63	0.63	
9,379.0	90.20	358.00	7,158.4	1,817.2	932.0	1,817.2	1.26	-1.09	
9,442.0	90.00	357.40	7,158.3	1,880.2	929.5	1,880.2	1.00	-0.32	
9,506.0	89.30	357.70	7,158.7	1,944.1	926.7	1,944.1	1.19	-1.09	
9,569.0	88.60	357.90	7,159.9	2,007.1	924.3	2,007.1	1.16	-1.11	
9,633.0	88.60	357.20	7,161.4	2,071.0	921.6	2,071.0	1.09	0.00	
9,696.0	88.80	357.60	7,162.8	2,133.9	918.7	2,133.9	0.71	0.32	
9,759.0	89.10	357.80	7,164.0	2,196.9	916.2	2,196.9	0.57	0.48	
9,823.0	90.10	359.20	7,164.5	2,260.8	914.5	2,260.8	2.69	1.56	
9,887.0	90.40	359.10	7,164.2	2,324.8	913.6	2,324.8	0.49	0.47	
9,950.0	90.50	0.50	7,163.7	2,387.8	913.4	2,387.8	2.23	0.16	
10,013.0	90.80	2.10	7,163.0	2,450.8	914.8	2,450.8	2.58	0.48	
10,077.0	90.10	2.10	7,162.5	2,514.8	917.1	2,514.8	1.09	-1.09	
10,140.0	89.00	1.30	7,163.0	2,577.7	919.0	2,577.7	2.16	-1.75	
10,204.0	88.90	0.60	7,164.1	2,641.7	920.1	2,641.7	1.10	-0.16	
10,267.0	88.60	0.50	7,165.5	2,704.7	920.7	2,704.7	0.50	-0.48	
10,331.0	89.40	0.30	7,166.6	2,768.7	921.1	2,768.7	1.29	1.25	
10,394.0	89.80	0.20	7,167.1	2,831.7	921.4	2,831.7	0.65	0.63	
10,458.0	89.80	0.30	7,167.3	2,895.7	921.7	2,895.7	0.16	0.00	
10,521.0	89.70	359.80	7,167.6	2,958.7	921.7	2,958.7	0.81	-0.16	
10,585.0	89.50	359.80	7,168.0	3,022.7	921.5	3,022.7	0.31	-0.31	
10,649.0	89.10	0.20	7,168.8	3,086.7	921.5	3,086.7	0.88	-0.62	
10,712.0	90.20	359.90	7,169.2	3,149.7	921.6	3,149.7	1.81	1.75	
10,775.0	90.40	359.80	7,168.8	3,212.7	921.4	3,212.7	0.35	0.32	
10,839.0	90.10	359.10	7,168.6	3,276.7	920.8	3,276.7	1.19	-0.47	
10,902.0	90.40	359.90	7,168.3	3,339.7	920.2	3,339.7	1.36	0.48	
10,966.0	90.90	0.00	7,167.6	3,403.6	920.2	3,403.6	0.80	0.78	
11,029.0	91.00	359.90	7,166.5	3,466.6	920.1	3,466.6	0.22	0.16	
11,093.0	91.20	0.20	7,165.3	3,530.6	920.2	3,530.6	0.56	0.31	
11,156.0	89.60	359.70	7,164.8	3,593.6	920.1	3,593.6	2.66	-2.54	
11,220.0	89.70	359.70	7,165.2	3,657.6	919.8	3,657.6	0.16	0.16	
11,283.0	90.30	359.50	7,165.2	3,720.6	919.3	3,720.6	1.00	0.95	
11,346.0	90.40	359.40	7,164.9	3,783.6	918.7	3,783.6	0.22	0.16	
11,410.0	90.90	359.00	7,164.1	3,847.6	917.8	3,847.6	1.00	0.78	
11,473.0	90.70	358.60	7,163.2	3,910.6	916.5	3,910.6	0.71	-0.32	
11,514.5	90.57	358.41	7,162.8	3,952.1	915.4	3,952.1	0.56	-0.31	Interp @ 7161.0 (Davis 2B-9H HZ Plan #3)
11,537.0	90.50	358.30	7,162.6	3,974.6	914.8	3,974.6	0.56	-0.31	
11,600.0	90.90	358.10	7,161.8	4,037.5	912.8	4,037.5	0.71	0.63	
11,664.0	90.70	357.80	7,160.9	4,101.5	910.5	4,101.5	0.56	-0.31	
11,727.0	90.30	359.10	7,160.4	4,164.4	908.8	4,164.4	2.16	-0.63	
11,791.0	89.80	359.30	7,160.3	4,228.4	907.9	4,228.4	0.84	-0.78	
11,854.0	89.70	359.80	7,160.6	4,291.4	907.4	4,291.4	0.81	-0.16	
11,918.0	90.60	0.60	7,160.4	4,355.4	907.7	4,355.4	1.88	1.41	

# Cathedral Energy Services

## Survey Report

<b>Company:</b>	EnCana Oil & Gas (USA) Inc	<b>Local Co-ordinate Reference:</b>	Well Davis 2B-9H
<b>Project:</b>	DJ Wattenberg	<b>TVD Reference:</b>	KBE @ 4895.0ft (Ensign 135)
<b>Site:</b>	SWNW S9-T2N-R66W (Davis)	<b>MD Reference:</b>	KBE @ 4895.0ft (Ensign 135)
<b>Well:</b>	Davis 2B-9H	<b>North Reference:</b>	True
<b>Wellbore:</b>	HZ	<b>Survey Calculation Method:</b>	Minimum Curvature
<b>Design:</b>	HZ	<b>Database:</b>	USA EDM 5000 Multi Users DB

Survey									
Measured Depth (ft)	Inclination (°)	Azimuth (°)	Vertical Depth (ft)	+N/-S (ft)	+E/-W (ft)	Vertical Section (ft)	Dogleg Rate (°/100ft)	Build Rate (°/100ft)	Formations / Comments
11,981.0	91.60	0.30	7,159.2	4,418.4	908.2	4,418.4	1.66	1.59	
12,045.0	90.50	0.60	7,158.0	4,482.4	908.7	4,482.4	1.78	-1.72	
12,108.0	89.90	0.50	7,157.8	4,545.4	909.3	4,545.4	0.97	-0.95	
12,172.0	90.60	0.10	7,157.5	4,609.4	909.6	4,609.4	1.26	1.09	
12,235.0	90.90	359.50	7,156.7	4,672.4	909.4	4,672.4	1.06	0.48	
12,299.0	90.70	0.20	7,155.8	4,736.4	909.2	4,736.4	1.14	-0.31	
12,362.0	90.40	0.10	7,155.2	4,799.4	909.4	4,799.4	0.50	-0.48	
12,425.0	91.00	359.90	7,154.4	4,862.4	909.4	4,862.4	1.00	0.95	
12,489.0	91.50	359.10	7,153.0	4,926.4	908.8	4,926.4	1.47	0.78	
12,552.0	90.80	359.90	7,151.8	4,989.3	908.3	4,989.3	1.69	-1.11	
12,616.0	90.20	0.30	7,151.2	5,053.3	908.4	5,053.3	1.13	-0.94	
12,679.0	90.20	359.90	7,151.0	5,116.3	908.5	5,116.3	0.63	0.00	
12,743.0	89.50	359.40	7,151.2	5,180.3	908.1	5,180.3	1.34	-1.09	
12,806.0	90.50	0.30	7,151.2	5,243.3	907.9	5,243.3	2.14	1.59	
12,870.0	91.30	0.40	7,150.2	5,307.3	908.3	5,307.3	1.26	1.25	
12,933.0	90.50	359.90	7,149.2	5,370.3	908.5	5,370.3	1.50	-1.27	
12,997.0	90.30	0.50	7,148.7	5,434.3	908.7	5,434.3	0.99	-0.31	
13,059.0	90.70	0.10	7,148.2	5,496.3	909.0	5,496.3	0.91	0.65	
13,123.0	91.10	359.60	7,147.2	5,560.3	908.9	5,560.3	1.00	0.62	
13,186.0	90.20	359.80	7,146.5	5,623.3	908.5	5,623.3	1.46	-1.43	
13,250.0	89.50	358.60	7,146.6	5,687.3	907.6	5,687.3	2.17	-1.09	
13,313.0	90.10	357.80	7,146.9	5,750.3	905.7	5,750.3	1.59	0.95	
13,377.0	90.50	358.30	7,146.5	5,814.2	903.5	5,814.2	1.00	0.62	
13,440.0	91.30	358.50	7,145.5	5,877.2	901.7	5,877.2	1.31	1.27	
13,504.0	90.30	358.50	7,144.6	5,941.2	900.1	5,941.2	1.56	-1.56	
13,567.0	90.00	358.50	7,144.5	6,004.1	898.4	6,004.1	0.48	-0.48	
13,631.0	91.60	359.90	7,143.6	6,068.1	897.5	6,068.1	3.32	2.50	
13,694.0	91.10	359.90	7,142.1	6,131.1	897.4	6,131.1	0.79	-0.79	
13,758.0	90.30	0.00	7,141.3	6,195.1	897.3	6,195.1	1.26	-1.25	
13,821.0	90.20	359.90	7,141.0	6,258.1	897.3	6,258.1	0.22	-0.16	
13,885.0	90.40	359.90	7,140.7	6,322.1	897.2	6,322.1	0.31	0.31	
14,005.0	90.50	359.30	7,139.8	6,442.1	896.3	6,442.1	0.51	0.08	
14,012.0	91.10	359.10	7,139.7	6,449.1	896.2	6,449.1	9.03	8.57	
14,075.0	89.90	359.00	7,139.1	6,512.1	895.2	6,512.1	1.91	-1.90	
14,139.0	89.50	358.40	7,139.4	6,576.1	893.7	6,576.1	1.13	-0.62	
14,202.0	89.40	358.10	7,140.1	6,639.0	891.8	6,639.0	0.50	-0.16	
14,265.0	89.60	358.00	7,140.6	6,702.0	889.7	6,702.0	0.35	0.32	
14,302.3	90.24	357.88	7,140.7	6,739.3	888.3	6,739.3	1.75	1.72	Davis 2B-9H PBHL (4.17.12)
14,329.0	90.70	357.80	7,140.4	6,765.9	887.3	6,765.9	1.75	1.72	
14,392.0	90.90	357.90	7,139.6	6,828.9	885.0	6,828.9	0.35	0.32	
14,419.0	91.00	357.00	7,139.1	6,855.9	883.8	6,855.9	3.35	0.37	Last Cathedral Survey @ 14,419' MD
14,476.0	91.00	357.00	7,138.1	6,912.8	880.8	6,912.8	0.00	0.00	Projection to Bit @ 14,476'

# Cathedral Energy Services

## Survey Report

<b>Company:</b>	EnCana Oil & Gas (USA) Inc	<b>Local Co-ordinate Reference:</b>	Well Davis 2B-9H
<b>Project:</b>	DJ Wattenberg	<b>TVD Reference:</b>	KBE @ 4895.0ft (Ensign 135)
<b>Site:</b>	SWNW S9-T2N-R66W (Davis)	<b>MD Reference:</b>	KBE @ 4895.0ft (Ensign 135)
<b>Well:</b>	Davis 2B-9H	<b>North Reference:</b>	True
<b>Wellbore:</b>	HZ	<b>Survey Calculation Method:</b>	Minimum Curvature
<b>Design:</b>	HZ	<b>Database:</b>	USA EDM 5000 Multi Users DB

Targets									
Target Name	Dip Angle	Dip Dir.	TVD	+N/-S	+E/-W	Northing	Easting	Latitude	Longitude
- hit/miss target	(°)	(°)	(ft)	(ft)	(ft)	(ft)	(ft)		
- Shape									
Davis 2B-9H PBHL (4.17	0.00	0.00	7,136.9	6,740.2	913.0	1,306,650.83	3,199,406.38	40.172943	-104.786430
- actual wellpath misses target center by 25.0ft at 14302.3ft MD (7140.7 TVD, 6739.3 N, 888.3 E)									
- Point									
Interp @ 7161.0 (Davis ;	0.00	0.00	7,161.0	3,952.0	913.2	1,303,862.74	3,199,428.86	40.165289	-104.786430
- actual wellpath misses target center by 2.9ft at 11514.5ft MD (7162.8 TVD, 3952.1 N, 915.4 E)									
- Point									

Design Annotations				
Measured Depth	Vertical Depth	Local Coordinates		Comment
(ft)	(ft)	+N/-S (ft)	+E/-W (ft)	
828.0	827.9	-1.4	-9.1	Last Gyro Survey @ 828' MD
14,419.0	7,139.1	6,855.9	883.8	Last Cathedral Survey @ 14,419' MD
14,476.0	7,138.1	6,912.8	880.8	Projection to Bit @ 14,476'

Checked By: \_\_\_\_\_ Approved By: \_\_\_\_\_ Date: \_\_\_\_\_