

ENCANA OIL & GAS (USA) INC. - EBUS
DO NOT MAIL-3601 N STAGECOACH RD
LONGMONT, Colorado

Davis 2B-9H

Ensign/135

Post Job Summary

Cement Production Casing

Date Prepared: 06/09/2012
Version: 1

Service Supervisor: SNYDER, JONATHAN

Submitted by: PLIENESS, RYAN

HALLIBURTON

HALLIBURTON

Wellbore Geometry

Job Tubulars					MD		TVD		Excess	Shoe Joint Length
Type	Description	Size in	ID in	Wt lbm/ft	Top ft	Bottom ft	Top ft	Bottom ft	%	ft
Open Hole Section	Open Hole		8.750		7,587.00	14,546.00	0.00	0.00		
Casing	Intermediate Casing	7.00	6.276	26.00	0.00	7,587.00	0.00			0.00
Casing	Production Casing	4.50	4.026	11.00	0.00	14,546.00	0.00	0.00		

Pumping Schedule

Stage /Plug #	Fluid #	Fluid Type	Fluid Name	Surface Density lbm/gal	Avg Rate bbl/min	Surface Volume	Downhole Volume
1	1	Spacer	TUNED SPACER III	11.00	4.00	40.0 bbl	40.0 bbl
1	2	Cement Slurry	EXPANDACEM B2	13.80	4.00	520.0 sacks	520.0 sacks
1	3	Spacer	ClayWeb III Water	8.34	0.00	214.0 bbl	214.0 bbl

HALLIBURTON

Fluids Pumped

Stage/Plug # 1 Fluid 1: TUNED SPACER III
TUNED SPACER III - SBM (483826)
30.27 Barite
lbm/bbl

Fluid Density: 11.00 lbm/gal
Fluid Volume: 40.00 bbl
Pump Rate: 4.00 bbl/min

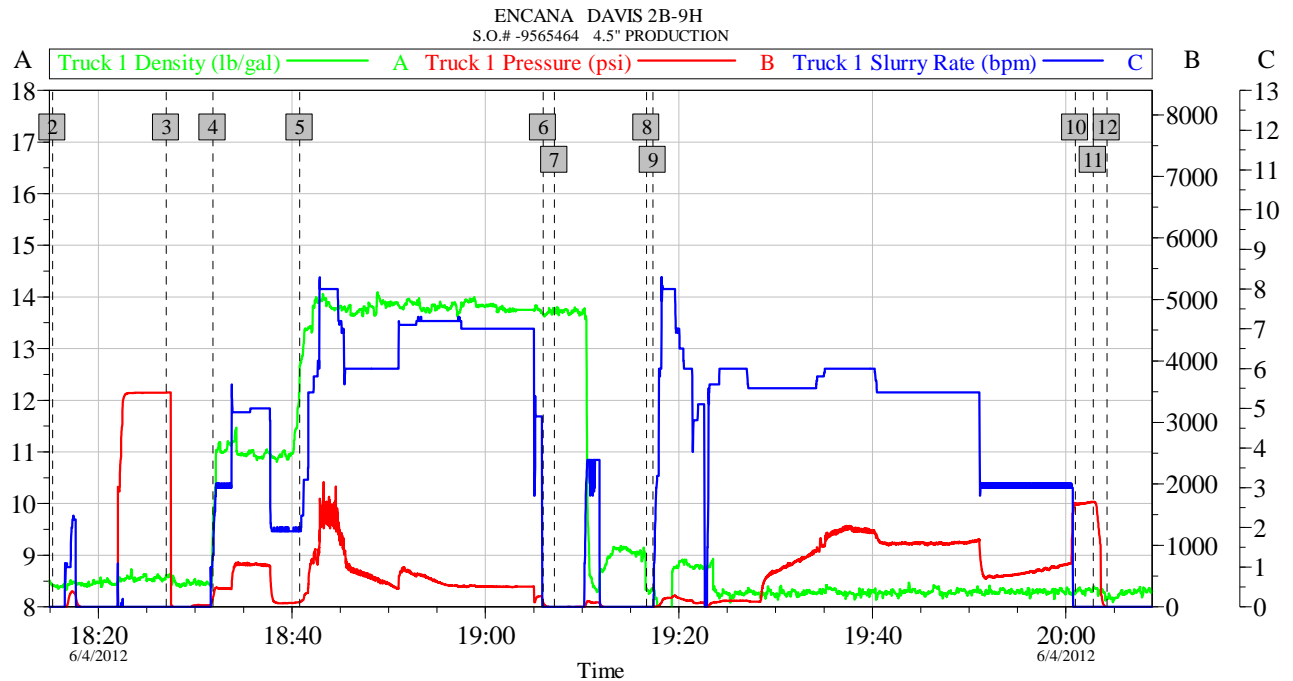
Stage/Plug # 1 Fluid 2: EXPANDACEM B2
EXPANDACEM (TM) SYSTEM

Fluid Weight: 13.80 lbm/gal
Slurry Yield: 1.68 ft³/sack
Total Mixing Fluid: 7.75 Gal
Surface Volume: 520.0 sacks
Sacks: 520.0 sacks
Estimated Top of Fluid:
Pump Rate: 4.00 bbl/min

Stage/Plug # 1 Fluid 3: ClayWeb III Water
DUMMY MUD / FLUSH / SPACER SBC MATERIAL
0.2 gal/Mgal CLA-Web

Fluid Density: 8.34 lbm/gal
Fluid Volume: 214.00 bbl
Pump Rate: 0.00 bbl/min

Data Acquisition



Global Event Log														
Intersection		T1D	T1P	Intersection		T1D	T1P	Intersection		T1D	T1P			
2	Start Job	18:15:15	8.416	-7.000	3	Test Lines	18:27:00	8.620	3486	4	Pump Spacer 1	18:31:49	9.540	143.7
5	Pump Cement	18:40:49	12.65	77.86	6	Shutdown	19:05:58	13.66	72.57	7	Clean Lines	19:07:07	13.77	-3.000
8	Drop Plug	19:16:39	8.352	-0.741	9	Pump Displacement	19:17:19	8.358	0.000	10	Bump Plug	20:00:59	8.256	1680
11	Check Floats	20:02:49	8.374	1707	12	End Job	20:04:15	8.180	-11.00					

Customer:	Job Date: 04-Jun-2012	Sales Order #: 9565464
Well Description:	UWI:	

OptiCem v6.4.9
04-Jun-12 20:16

HALLIBURTON

Service Supervisor Reports

Job Log

Date/Time	Chart #	Activity Code	Pump Rate	Cum Vol	Pump		Pressure (psig)	Comments
06/04/2012 16:00		Arrive at Location from Service Center						ARRIVED AND CONDUCTED A HAZARD HUNT AND FOUND NO HAZARDS THAT CONFLICT WITH US RIGGING UP EQUIPMENT.
06/04/2012 17:45		Pre-Job Safety Meeting						HELD SAFETY MEETING WITH ALL EMPLOYEES AND ALL THIRD PARTY PERSONEL PRIOR TO PUMPING THE CEMENT JOB.
06/04/2012 18:15		Start Job						
06/04/2012 18:27		Test Lines						PRESSURE TEST LINES TO 3779 PSI
06/04/2012 18:31		Pump Spacer 1	5	40			645.0	TUNED SPACER MIXED @ 11 PPG W/ RIG WATER
06/04/2012 18:40		Pump Cement	7	156			380.0	520 SKS EXPANDACEM B2 MIXED @ 13.8 PPG W/ RIG WATER
06/04/2012 19:05		Shutdown						
06/04/2012 19:07		Clean Lines						
06/04/2012 19:16		Drop Top Plug						TOOL HAND DROPPED PLUG WHILE OPERATOR WAS CLEANING PUMPS AND LINES
06/04/2012 19:17		Pump Displacement	6	214			1045.0	RIG WATER MIXED W/ CLAY WEB III
06/04/2012 20:00		Bump Plug	3				710.0	
06/04/2012 20:02		Check Floats					1707.0	FLOATS HELD, GOOD RETURNS THROUGHOUT THE JOB. WE GOT 1.5 BBLS OF WATER BACK IN THE DISPLACEMENT TANKS WHILE CHECKING FLOATS
06/04/2012 20:04		End Job						
06/04/2012 20:15		Pre-Rig Down Safety Meeting						HELD SAFETY MEETING WITH ALL EMPLOYEES PRIOR TO RIGGING DOWN AND DISCUSSED ALL HAZARDS WHILE RIGGING DOWN EQUIPMENT.
06/04/2012 21:30		Depart Location for Service Center or Other Site						HELD SAFETY MEETING PRIOR TO LEAVING LOCATION AND DISCUSSED ALL POTENTIAL HAZARDS WHILE DRIVING BACK TO THE SERVICE CENTER.

HALLIBURTON

The Road to Excellence Starts with Safety

Sold To #: 340078	Ship To #: 2927140	Quote #:	Sales Order #: 9565464
Customer: ENCANA OIL & GAS (USA) INC. - EBUS		Customer Rep: Elrod, Dennis	
Well Name: Davis		Well #: 2B-9H	API/UWI #: 05-123-35460-00
Field: WATTENBERG	City (SAP): FORT LUPTON	County/Parish: Weld	State: Colorado
Lat: N 40.154 deg. OR N 40 deg. 9 min. 15.984 secs.		Long: W 104.79 deg. OR W -105 deg. 12 min. 37.08 secs.	
Contractor: Ensign		Rig/Platform Name/Num: 135	
Job Purpose: Cement Production Casing			
Well Type: Development Well		Job Type: Cement Production Casing	
Sales Person: AARON, WESLEY		Srv Supervisor: SNYDER, JONATHAN	MBU ID Emp #: 435616

Job Personnel

HES Emp Name	Exp Hrs	Emp #	HES Emp Name	Exp Hrs	Emp #	HES Emp Name	Exp Hrs	Emp #
BARNES, BRIAN L	5.5	485204	BARTOSEK, KEVIN	5.5	516167	SMITH, AARON David	5.5	518187
SNYDER, JONATHAN Leroy	5.5	435616	WILEY, JAMES A	5.5	440080			

Equipment

HES Unit #	Distance-1 way	HES Unit #	Distance-1 way	HES Unit #	Distance-1 way	HES Unit #	Distance-1 way
10866497C	12 mile	11362287C	12 mile	11398319	12 mile	11518548	12 mile
11562570C	12 mile	11764739	12 mile				

Job Hours

Date	On Location Hours	Operating Hours	Date	On Location Hours	Operating Hours	Date	On Location Hours	Operating Hours

TOTAL Total is the sum of each column separately

Job

Job Times

Formation Name						Date	Time	Time Zone
Formation Depth (MD)	Top		Bottom		Called Out	04 - Jun - 2012	13:00	MST
Form Type		BHST			On Location	04 - Jun - 2012	16:00	MST
Job depth MD	14546. ft	Job Depth TVD	14466. ft		Job Started	04 - Jun - 2012	18:15	MST
Water Depth		Wk Ht Above Floor	12. ft		Job Completed	04 - Jun - 2012	20:04	MST
Perforation Depth (MD)	From		To		Departed Loc	04 - Jun - 2012	21:30	MST

Well Data

Description	New / Used	Max pressure psig	Size in	ID in	Weight lbm/ft	Thread	Grade	Top MD ft	Bottom MD ft	Top TVD ft	Bottom TVD ft
Open Hole				8.75				7587.	14546.	.	.
Intermediate Casing	Unknown		7.	6.276	26.	Unknown	N-80	.	7587.	.	.
Production Casing	Unknown		4.5	4.026	11.		P-110	.	14546.	.	.

Tools and Accessories

Type	Size	Qty	Make	Depth	Type	Size	Qty	Make	Depth	Type	Size	Qty	Make
Guide Shoe					Packer					Top Plug			
Float Shoe					Bridge Plug					Bottom Plug			
Float Collar					Retainer					SSR plug set			
Insert Float										Plug Container			
Stage Tool										Centralizers			

Miscellaneous Materials

HALLIBURTON

Gelling Agt		Conc		Surfactant		Conc		Acid Type		Qty		Conc	%
Treatment Fld		Conc		Inhibitor		Conc		Sand Type		Size		Qty	

Fluid Data												
Stage/Plug #: 1												
Fluid #	Stage Type	Fluid Name	Qty	Qty uom	Mixing Density lbm/gal	Yield ft3/sk	Mix Fluid Gal/sk	Rate bbl/min	Total Mix Fluid Gal/sk			
1	TUNED SPACER III	TUNED SPACER III - SBM (483826)	40.00	bbl	11.	6.74	42.3	4.0				
	39.07 gal/bbl	FRESH WATER										
	30.27 lbm/bbl	BARITE, 100 LB SK (100003680)										
2	EXPANDACEM B2	EXPANDACEM (TM) SYSTEM (452979)	520.0	sacks	13.8	1.68	7.75	4.0	7.75			
	7.75 Gal	FRESH WATER										
3	ClayWeb III Water		214.00	bbl	8.34	.0	.0	.0				
	0.2 gal/Mgal	CLA-WEB - TOTE (101985045)										

Calculated Values			Pressures		Volumes						
Displacement		Shut In: Instant			Lost Returns		Cement Slurry		Pad		
Top Of Cement		5 Min			Cement Returns		Actual Displacement		Treatment		
Frac Gradient		15 Min			Spacers		Load and Breakdown		Total Job		

Rates												
Circulating		Mixing			Displacement		Avg. Job					
Cement Left In Pipe	Amount	0 ft	Reason	Shoe Joint								
Frac Ring # 1 @	ID		Frac ring # 2 @	ID		Frac Ring # 3 @	ID		Frac Ring # 4 @	ID		

The Information Stated Herein Is Correct	Customer Representative Signature
--	-----------------------------------