

ENCANA OIL & GAS (USA) INC. - EBUS
DO NOT MAIL-3601 N STAGECOACH RD
LONGMONT, Colorado

davis
Davis 2B-9H

Ensign/135

Post Job Summary

Cement Surface Casing

Date Prepared: 06/01/2012
Version: 1

Service Supervisor: NIELSON, BRANDON

Submitted by: MCKAY, ADAM

HALLIBURTON

HALLIBURTON

Wellbore Geometry

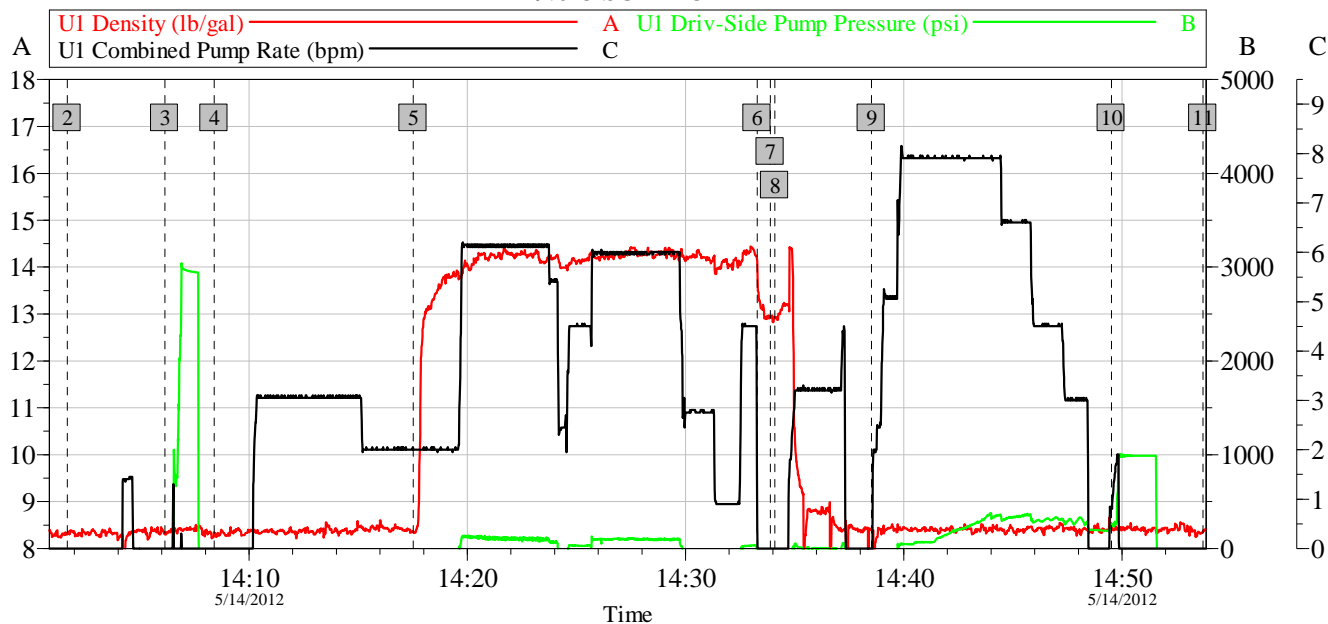
Job Tubulars					MD		TVD		Excess	Shoe Joint Length ft
Type	Description	Size in	ID in	Wt lbm/ft	Top ft	Bottom ft	Top ft	Bottom ft	%	
Casing	9 5/8" Surface Casing	9.63	8.835	40.00	0.00	900.00	0.00	0.00	0.00	
Open Hole Section	Open Hole		12.250		0.00	900.00	0.00	0.00	60.00	0.00

Pumping Schedule

Stage /Plug #	Fluid #	Fluid Type	Fluid Name	Surface Density lbm/gal	Avg Rate bbl/min	Surface Volume	Downhole Volume
1	1	Spacer	Fresh Water	8.34	3.00	30.0 bbl	30.0 bbl
1	2	Cement Slurry	SwiftCem 14.2#	14.20	6.00	260.0 sacks	260.0 sacks

Data Acquisition

ENCANA DAVIS 2B-9H 9.625 SURFACE



Global Event Log

Intersection	UDPP	Intersection	UDPP	Intersection	UDPP
1 Starting Job	12:27:15 -41.69	2 Start Job	14:01:40 -52.51	3 Test Lines	14:06:08 -47.64
4 Pump Spacer 1	14:08:24 -44.72	5 14.2 # Swiftcem	14:17:31 -24.31	6 Shut Down	14:33:17 -60.19
7 Clean Lines	14:33:53 -67.09	8 Drop Top Plug	14:34:05 -67.09	9 Pump Displacement	14:38:31 -70.97
10 Check Floats	14:49:31 248.7	11 End Job	14:53:42 -52.50	12 Ending Job	14:56:44 -46.67

Customer: ENCANA	Job Date: 14-May-2012	Sales Order #: 9514550	OptiCem v6.4.10 14-May-12 15:03
Well Description: SURFACE	UWI: 05-123-35460-00	ENSING 135	
SERVICE SUPERVISOR BRANDON NIELSON	OPERATOR G. BANUELOS	PUMP 10824253	

Service Supervisor Reports

Job Log

Date/Time	Chart #	Activity Code	Pump Rate	Cum Vol	Pump		Pressure (psig)		Comments
05/14/2012 14:06		Test Lines							PRESSURE TEST LINES TO 3000 PSI NO VISIBLE LEAKS. PRESSURE TO LIFT THE PIPE WAS 418 PSI SO WE CHAINED IT DOWN.
05/14/2012 14:06		Pump Spacer 1	5	20				190.0	RIG WATER WITH 2 BOTTLES OF DYE IN FIRST 10 BBL
05/14/2012 14:17		Pump Cement	6	69				108.0	SWIFTCEM MIXED @ 14.2 PPG WITH RIG WATER
05/14/2012 14:33		Shutdown							
05/14/2012 14:33		Clean Lines							WASH PUMPS AND LINES
05/14/2012 14:34		Drop Top Plug							PLUG PRE LOADED WITNESSED BY COMPANY REP.
05/14/2012 14:38		Pump Displacement	7	62.7				351.0	RIG WATER
05/14/2012 14:49		Bump Plug	3					410.0	CALCULATED PRESSURE TO LAND WAS 248 PSI
05/14/2012 14:50		Check Floats						990.0	FLOATS HELD
05/14/2012 14:53		End Job							



The Road to Excellence Starts with Safety

Sold To #: 340078		Ship To #: 2927140		Quote #:		Sales Order #: 9514550	
Customer: ENCANA OIL & GAS (USA) INC. - EBUS				Customer Rep: ., DENNIS			
Well Name: Davis			Well #: 2B-9H			API/UWI #: 05-123-35460	
Field: WATTENBERG		City (SAP): FORT LUPTON		County/Parish: Weld		State: Colorado	
Lat: N 40.154 deg. OR N 40 deg. 9 min. 15.984 secs.				Long: W 104.788 deg. OR W -105 deg. 12 min. 43.56 secs.			
Contractor: Ensign			Rig/Platform Name/Num: 135				
Job Purpose: Cement Surface Casing							
Well Type: Development Well			Job Type: Cement Surface Casing				
Sales Person: FLING, MATTHEW			Srvc Supervisor: NIELSON, BRANDON			MBU ID Emp #: 479703	

Job Personnel

HES Emp Name	Exp Hrs	Emp #	HES Emp Name	Exp Hrs	Emp #	HES Emp Name	Exp Hrs	Emp #
BANUELOS, GUADALUPE	5.0	372277	JEWELL, WILLIAM Uris	5.0	503358	NIELSON, BRANDON K	5.0	479703

Equipment

HES Unit #	Distance-1 way	HES Unit #	Distance-1 way	HES Unit #	Distance-1 way	HES Unit #	Distance-1 way
10824253C	20 mile	10951212	20 mile	10988836C	20 mile	11527037	20 mile

Job Hours

Date	On Location Hours	Operating Hours	Date	On Location Hours	Operating Hours	Date	On Location Hours	Operating Hours
TOTAL					Total is the sum of each column separately			

TOTAL						Totals are sum of each column separately			
Job						Job Times			
Formation Name							Date	Time	Time Zone
Formation Depth (MD)	Top			Bottom		Called Out	14 - May - 2012	09:00	MST
Form Type			BHST			On Location	14 - May - 2012	11:00	MST
Job depth MD	869. ft		Job Depth TVD	869. ft		Job Started	14 - May - 2012	14:00	MST
Water Depth			Wk Ht Above Floor	5. ft		Job Completed	14 - May - 2012	15:00	MST
Perforation Depth (MD)	From			To		Departed Loc	14 - May - 2012	16:00	MST

Well Data

<i>Description</i>	New / Used	Max pressure psig	Size in	ID in	Weight lbm/ft	Thread	Grade	Top MD ft	Bottom MD ft	Top TVD ft	Bottom TVD ft
Open Hole				12.25				.	900.	.	.
9 5/8" Surface Casing	New		9.625	8.835	40.		N-80	.	900.	.	.

Tools and Accessories

Type	Size	Qty	Make	Depth	Type	Size	Qty	Make	Depth	Type	Size	Qty	Make
Guide Shoe					Packer					Top Plug			
Float Shoe					Bridge Plug					Bottom Plug			
Float Collar					Retainer					SSR plug set			
Insert Float										Plug Container			
Stage Tool										Centralizers			

Miscellaneous Materials

Gelling Agt	Conc	Surfactant	Conc	Acid Type	Qty	Conc	%
Treatment Fld	Conc	Inhibitor	Conc	Sand Type	Size	Qty	

Fluid Data

Stage/Plug #: 1

HALLIBURTON

Fluid #	Stage Type	Fluid Name	Qty	Qty uom	Mixing Density lbm/gal	Yield ft ³ /sk	Mix Fluid Gal/sk	Rate bbl/min	Total Mix Fluid Gal/sk
1	Fresh Water		30.00	bbl	8.34	.0	.0	.0	
2	SwiftCem 14.2#	SWIFTCM (TM) SYSTEM (452990)	260.0	sacks	14.2	1.49	7.43		7.43
7.43 Gal		FRESH WATER							
Calculated Values		Pressures		Volumes					
Displacement		Shut In: Instant		Lost Returns		Cement Slurry		Pad	
Top Of Cement		5 Min		Cement Returns		Actual Displacement		Treatment	
Frac Gradient		15 Min		Spacers		Load and Breakdown		Total Job	
Rates									
Circulating		Mixing		Displacement		Avg. Job			
Cement Left In Pipe		Amount	0 ft	Reason	Shoe Joint				
Frac Ring # 1 @	ID	Frac ring # 2 @	ID	Frac Ring # 3 @	ID	Frac Ring # 4 @	ID		
The Information Stated Herein Is Correct				Customer Representative Signature					