
WPX ENERGY ROCKY MOUNTAIN LLC-EBUS

**SG 33-23
GRAND VALLEY
Garfield County , Colorado**

Cement Surface Casing

04-Dec-2012

Post Job Summary

The Road to Excellence Starts with Safety

Sold To #: 300721	Ship To #: 2965003	Quote #:	Sales Order #: 900018423
Customer: WPX ENERGY ROCKY MOUNTAIN LLC-EBUS	Customer Rep:		
Well Name: SG	Well #: 33-23	API/UWI #:	
Field: GRAND VALLEY	City (SAP): PARACHUTE	County/Parish: Garfield	State: Colorado
Contractor: NABORS 574	Rig/Platform Name/Num: NABORS 574		
Job Purpose: Cement Surface Casing			
Well Type: Development Well	Job Type: Cement Surface Casing		
Sales Person: MAYO, MARK	Srv Supervisor: DEUSSEN, EDWARD	MBU ID Emp #:	485182

Job Personnel

HES Emp Name	Exp Hrs	Emp #	HES Emp Name	Exp Hrs	Emp #	HES Emp Name	Exp Hrs	Emp #
BANKS, BRENT A	11.5	371353	DEUSSEN, EDWARD Eric	11.5	485182	SIMINEO, JEROD M	11.5	479954

Equipment

HES Unit #	Distance-1 way	HES Unit #	Distance-1 way	HES Unit #	Distance-1 way	HES Unit #	Distance-1 way
10872429	60 mile	11021972	60 mile	11027039	60 mile	11259886	60 mile
11808847	60 mile						

Job Hours

Date	On Location Hours	Operating Hours	Date	On Location Hours	Operating Hours	Date	On Location Hours	Operating Hours
12-3-12	0.5	0	12-4-12	11	4.5			
TOTAL			Total is the sum of each column separately					

Job

JOB						JOB TIMES				
Formation Name							Date	Time	Time Zone	
Formation Depth (MD)	Top			Bottom		Called Out	03 - Dec - 2012	20:00	MST	
Form Type		BHST				On Location	03 - Dec - 2012	23:30	MST	
Job depth MD		1090. ft		Job Depth TVD		1090. ft	Job Started	04 - Dec - 2012	08:20	MST
Water Depth				Wk Ht Above Floor		5. ft	Job Completed	04 - Dec - 2012	09:27	MST
Perforation Depth (MD)	From			To		Departed Loc	04 - Dec - 2012	11:00	MST	

Well Data

Description	New / Used	Max pressure psig	Size in	ID in	Weight lbm/ft	Thread	Grade	Top MD ft	Bottom MD ft	Top TVD ft	Bottom TVD ft
OPEN HOLE				13.5				.	1110.		
SURFACE CASING	Unknown		9.625	9.001	32.3		J-55	.	1090.		

Sales/Rental/3rd Party (HES)

Description	Qty	Qty uom	Depth	Supplier
R/A DENSOMETER W/CHART RECORDER,/JOB,ZI	1	JOB		
PORT. DATA ACQUIS. W/OPTICEM RT W/HES	1	EA		
PLUG,CMTG,TOP,9 5/8,HWE,8.16 MIN/9.06 MA	1	EA		

Tools and Accessories

Type	Size	Qty	Make	Depth	Type	Size	Qty	Make	Depth	Type	Size	Qty	Make
Guide Shoe					Packer					Top Plug	9 5/8	1	HES
Float Shoe					Bridge Plug					Bottom Plug			
Float Collar					Retainer					SSR plug set			
Insert Float										Plug Container	9 5/8	1	HES
Stage Tool										Centralizers			

Miscellaneous Materials

Gelling Agt	Conc	Surfactant	Conc	Acid Type	Qty	Conc	%
Treatment Fld	Conc	Inhibitor	Conc	Sand Type	Size	Qty	

Fluid Data

Stage/Plug #: 1

Fluid #	Stage Type	Fluid Name	Qty	Qty uom	Mixing Density lbm/gal	Yield ft ³ /sk	Mix Fluid Gal/sk	Rate bbl/min	Total Mix Fluid Gal/sk
1	Fresh Water Spacer	FRESH WATER	20.00	bbl	.	.0	.0	4.0	
2	VersaCem Tail Cement	VERSACEM (TM) SYSTEM (452010)	300.0	sacks	12.8	2.11	11.75	6.0	11.75
11.75 Gal		FRESH WATER							
3	Fresh Water Displacement	FRESH WATER	82.00	bbl	.	.0	.0	8.0	
Calculated Values		Pressures		Volumes					
Displacement	82	Shut In: Instant		Lost Returns		Cement Slurry	112.7	Pad	
Top Of Cement	SURFACE	5 Min		Cement Returns	20	Actual Displacement	82	Treatment	
Frac Gradient		15 Min		Spacers	20	Load and Breakdown		Total Job	214.7
Rates									
Circulating	14	Mixing	6	Displacement	8	Avg. Job	6		
Cement Left In Pipe	Amount	48 ft	Reason	Shoe Joint					
Frac Ring # 1 @	ID	Frac ring # 2 @	ID	Frac Ring # 3 @	ID	Frac Ring # 4 @	ID		
The Information Stated Herein Is Correct				Customer Representative Signature					

The Road to Excellence Starts with Safety

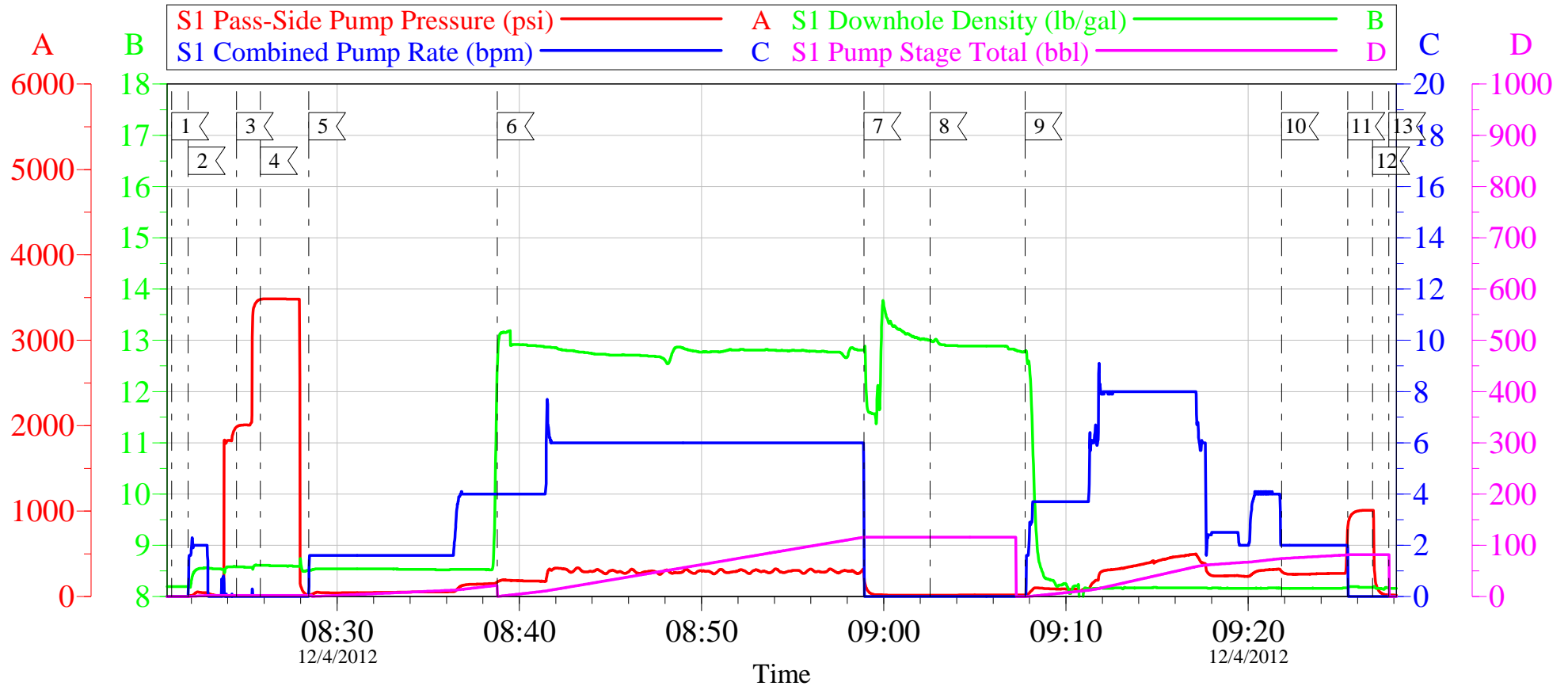
Sold To #: 300721		Ship To #: 2965003		Quote #:		Sales Order #: 900018423	
Customer: WPX ENERGY ROCKY MOUNTAIN LLC-EBUS				Customer Rep:			
Well Name: SG			Well #: 33-23			API/UWI #:	
Field: GRAND VALLEY		City (SAP): PARACHUTE		County/Parish: Garfield		State: Colorado	
Legal Description:							
Lat: N 0 deg. OR N 0 deg. 0 min. 0 secs.				Long: E 0 deg. OR E 0 deg. 0 min. 0 secs.			
Contractor: NABORS 574			Rig/Platform Name/Num: NABORS 574				
Job Purpose: Cement Surface Casing						Ticket Amount:	
Well Type: Development Well			Job Type: Cement Surface Casing				
Sales Person: MAYO, MARK			Srv Supervisor: DEUSSEN, EDWARD			MBU ID Emp #: 485182	

Activity Description	Date/Time	Cht #	Rate bbl/min	Volume bbl		Pressure psig		Comments
				Stage	Total	Tubing	Casing	
Call Out	12/03/2012 20:00							
Pre-Convoy Safety Meeting	12/03/2012 22:00							ALL HES PERSONNEL
Crew Leave Yard	12/03/2012 22:15							1 ELITE, 1 660, 1 PICKUP
Arrive At Loc	12/03/2012 23:30							RIG STILL PULLING DRILL PIPE
Assessment Of Location Safety Meeting	12/03/2012 23:45							
Pre-Rig Up Safety Meeting	12/04/2012 06:45							ALL HES PERSONNEL
Rig-Up Equipment	12/04/2012 07:00							1 HARD LINE TO FLOOR, 2 WATER LINES TO UPRIGHT AND DAY TANK, BULK HOSE TO 660
Pre-Job Safety Meeting	12/04/2012 08:00							ALL HES PERSONNEL AND RIG CREW
Start Job	12/04/2012 08:20							TD 1110', TP 1090', SJ 48', MW 10.2, OH 13 1/2", CSG 9 5/8", 32.3# J-55, VISC 45
Pump Water	12/04/2012 08:21		2	2			74.0	FILL LINES
Pressure Test	12/04/2012 08:25							PRESSURED UP TO 3480 PSI - PRESSURE HELD WELL
Pump Spacer 1	12/04/2012 08:28		4	20			151.0	FRESH WATER SPACER
Pump Tail Cement	12/04/2012 08:38		6	112.7			331.0	300 SKS, 12.8 PPG, 2.11 YIELD, 11.75 GAL/SK
Shutdown	12/04/2012 08:58							WASH UP ON TOP OF PLUG

Activity Description	Date/Time	Cht #	Rate bbl/min	Volume bbl		Pressure psig		Comments
				Stage	Total	Tubing	Casing	
Drop Top Plug	12/04/2012 09:02							
Pump Displacement	12/04/2012 09:07		8	82			492.0	FRESH WATER
Slow Rate	12/04/2012 09:21		2	72			270.0	
Bump Plug	12/04/2012 09:25						280.0	PRESSURED UP TO 970 PSI
Check Floats	12/04/2012 09:26							GOT 1/2 BBL BACK
End Job	12/04/2012 09:27							GOT 20 BBLS CEMENT TO SURFACE / USED 20 LBS SUGAR / NO DERRICK CHARGE OR ADD HOURS
Post-Job Safety Meeting (Pre Rig-Down)	12/04/2012 09:45							ALL HES PERSONNEL
Rig-Down Equipment	12/04/2012 10:00							
Pre-Convoy Safety Meeting	12/04/2012 10:45							ALL HES PERSONNEL
Crew Leave Location	12/04/2012 11:00							THANK YOU FOR USING HALLIBURTON AND ED DEUSSEN AND CREW

WPX - SG 33-23

9 5/8 SURFACE



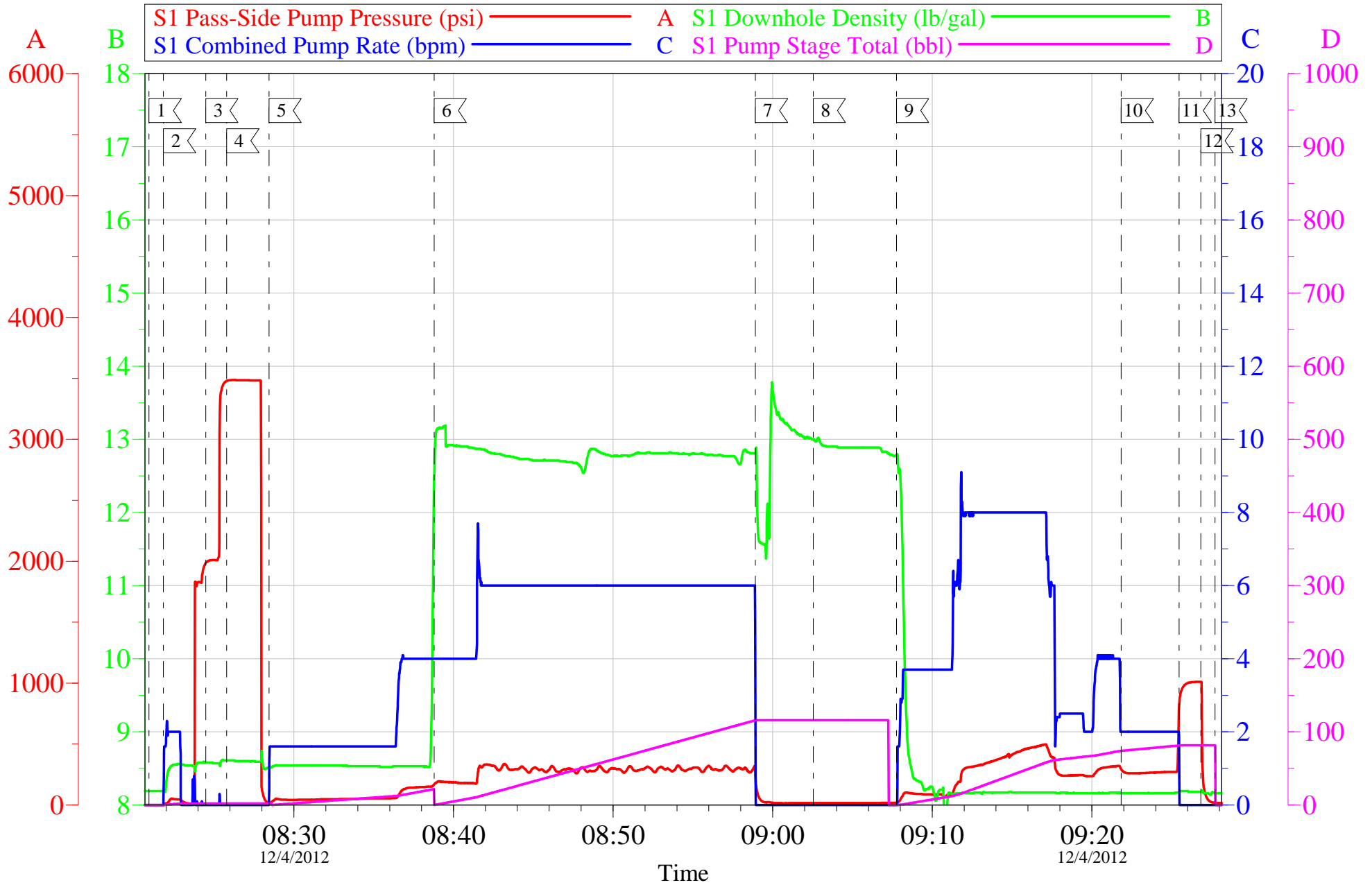
Local Event Log					
1	START JOB	08:20:56	2	FILL LINES	08:21:50
3	5TH GEAR STALLOUT	08:24:29	4	PRESSURE TEST	08:25:47
5	PUMP H2O SPACER	08:28:27	6	PUMP TAIL CEMENT	08:38:47
7	SHUTDOWN	08:58:55	8	WASH PUMP/DROP TOP PLUG	09:02:33
9	PUMP DISPLACEMENT	09:07:46	10	SLOW RATE	09:21:50
11	BUMP PLUG	09:25:28	12	CHECK FLOATS	09:26:50
13	END JOB	09:27:43			

Customer: WPX	Job Date: 04-Dec-2012	Sales Order #: 900018423
Well Description: SG 33-23	Job Type: SURFACE	ADC Used: YES
Company Rep: GARY VALLAD	Cement Supervisor: ED DEUSSEN	Elite #7: JEROD SIMINEO

OptiCem v6.4.10
04-Dec-12 09:51

WPX - SG 33-23

9 5/8 SURFACE



Customer: WPX	Job Date: 04-Dec-2012	Sales Order #: 900018423
Well Description: SG 33-23	Job Type: SURFACE	ADC Used: YES
Company Rep: GARY VALLAD	Cement Supervisor: ED DEUSSEN	Elite #7: JEROD SIMINEO

OptiCem v6.4.10
04-Dec-12 09:51

HALLIBURTON

Water Analysis Report

Company: WILLIAMS

Submitted by: ED DEUSSEN

Attention: J.TROUT

Lease SG

Well # 33-23

Date: 12/4/2012

Date Rec.: 12/4/2012

S.O.# 900018423

Job Type: 9 5/8 SURFACE

Specific Gravity	<i>MAX</i>	1
pH	<i>8</i>	7.5
Potassium (K)	<i>5000</i>	450 Mg / L
Calcium (Ca)	<i>500</i>	120 Mg / L
Iron (FE2)	<i>300</i>	0 Mg / L
Chlorides (Cl)	<i>3000</i>	0 Mg / L
Sulfates (SO ₄)	<i>1500</i>	<200 Mg / L
Temp	<i>40-80</i>	40 Deg
Total Dissolved Solids		50 Mg / L

Respectfully: ED DEUSSEN

Title: CEMENTING SUPERVISOR

Location: Grand Junction, CO

NOTICE: This report is limited to the described sample tested. Any person using or relying on this report agrees that Halliburton shall not be liable for any loss or damage whether due to act or omission resulting from such report or its use.

Sales Order #: 900018423	Line Item: 10	Survey Conducted Date: 12/4/2012
Customer: WPX ENERGY ROCKY MOUNTAIN LLC-EBUS		Job Type (BOM): CMT SURFACE CASING BOM
Customer Representative: GARY VALLAD		API / UWI: (leave blank if unknown) AFEYKJ4OQBKL3PXMAAA
Well Name: SG		Well Number: 33-23
Well Type: Development Well	Well Country: United States of America	
H2S Present: No	Well State: Colorado	Well County: Garfield

Dear Customer,

We hope that you were satisfied with the service quality of this job performed by Halliburton. It is the aim of our management and service personnel to deliver equipment and service of a standard unmatched in the service sector of the energy industry.

Please take the time to let us know if our performance met with your satisfaction. Please be as critical as possible to ensure we constantly improve our service. Your comments are of great value to us and are intended for the exclusive use of Halliburton.

CUSTOMER SATISFACTION SURVEY

CATEGORY	CUSTOMER SATISFACTION RESPONSE	
Survey Conducted Date	The date the survey was conducted	12/4/2012
Survey Interviewer	The survey interviewer is the person who initiated the survey.	EDWARD DEUSSEN (HB57194)
Customer Participation	Did the customer participate in this survey? (Y/N)	Yes
Customer Representative	Enter the Customer representative name	GARY VALLAD
HSE	Was our HSE performance satisfactory? Circle Y or N	Yes
Equipment	Were you satisfied with our Equipment? Circle Y or N	Yes
Personnel	Were you satisfied with our people? Circle Y or N	Yes
Customer Comment	Customer's Comment	GARY VALLAD

CUSTOMER SIGNATURE

Sales Order #: 900018423	Line Item: 10	Survey Conducted Date: 12/4/2012
Customer: WPX ENERGY ROCKY MOUNTAIN LLC-EBUS		Job Type (BOM): CMT SURFACE CASING BOM
Customer Representative: GARY VALLAD		API / UWI: (leave blank if unknown) AFEYKJ4OQBKL3PXMAAA
Well Name: SG		Well Number: 33-23
Well Type: Development Well	Well Country: United States of America	
H2S Present: No	Well State: Colorado	Well County: Garfield

KEY PERFORMANCE INDICATORS

General	
Survey Conducted Date The date the survey was conducted	12/4/2012

Cementing KPI Survey	
Type of Job Select the type of job. (Cementing or Non-Cementing)	0
Select the Maximum Deviation range for this Job What is the highest deviation for the job you just completed? This may not be the maximum well deviation.	Vertical
Total Operating Time (hours) Total Operating Hours Including Rig-up, Pumping, Rig-down. Enter in decimal format.	4.5
HSE Incident, Accident, Injury HSE Incident, Accident, Injury. This should be recordable incidents only.	No
Was the job purpose achieved? Was the job delivered correctly as per customer agreed design?	Yes
Operating Hours (Pumping Hours) Total number of hours pumping fluid on this job. Enter in decimal format.	2
Customer Non-Productive Rig Time (hrs) Lost time due to Halliburton in the start, execution, or completion of an ordered service or product, or delays in a follow-on service. Enter in decimal format. 0 if none.	0
Type of Rig Classification Job Was Performed Type Of Rig (classification) Job Was Performed On	Drilling Rig (Portable)
Number Of JSAs Performed Number Of Jsas Performed	5
Number of Unplanned Shutdowns Unplanned shutdown is when injection stops for any period of time.	0
Was this a Primary Cement Job (Yes / No)	Yes

Sales Order #: 900018423	Line Item: 10	Survey Conducted Date: 12/4/2012
Customer: WPX ENERGY ROCKY MOUNTAIN LLC-EBUS		Job Type (BOM): CMT SURFACE CASING BOM
Customer Representative: GARY VALLAD		API / UWI: (leave blank if unknown) AFEYKJ4OQBKL3PXMAAA
Well Name: SG		Well Number: 33-23
Well Type: Development Well	Well Country: United States of America	
H2S Present: No	Well State: Colorado	Well County: Garfield

Primary Cement Job= Casing job, Liner job, or Tie-back job.	
Did We Run Wiper Plugs? Did We Run Top And Bottom Casing Wiper Plugs?	Top
Mixing Density of Job Stayed in Designed Density Range (0-100%) Density Range defined as +/- .20 ppg. Calculation: Total BBLs cement mixed at designed density divided by total BBLs of cement multiplied by 100	95
Was Automated Density Control Used? Was Automated Density Control (ADC) Used ?	Yes
Pump Rate (percent) of Job Stayed At Designed Pump Rate Pump Rate range defined as +/- 1bbl/min. Calculation: Total BBLs of fluid pumped at the designed rate divided by Total BBLs of fluid pumped, multiplied by 100	99
Nbr of Remedial Sqz Jobs Rqd - Competition Number Of Remedial Squeeze Jobs Required After Primary Job Performed By Competition	0
Nbr of Remedial Plug Jobs Rqd - HES Number Of Remedial Plug Jobs Needed After Primary Plug Pumped By HES	0
Nbr of Remedial Sqz Jobs Rqd - HES Number Of Remedial Squeeze Jobs Required After Primary Job Performed By HES	0