

KERR-MCGEE OIL & GAS ONSHORE LP

Location: COLORADO Slot: SLOT#15 USA FED 04N-36HZ (767°FSL & 591°FWL, SEC.36)
Field: WELD COUNTY (KERR MCGEE) Well: USA FED 04N-36HZ
Facility: SEC.36-T3N-R66W Wellbore: USA FED 04N-36HZ PWB

Plot reference wellpath is USA FED 04N-36HZ (PERMIT) PWP

True vertical depths are referenced to XTREME 6 (RKB)	Grid System: NAD83 / Lambert Colorado SP, Northern Zone (501), US feet
Measured depths are referenced to XTREME 6 (RKB)	North Reference: True north
XTREME 6 (RKB) to Mean Sea Level: 5041 feet	Scale: True distance
Mean Sea Level to Mud line (At Slot: SLOT#15 USA FED 04N-36HZ (767°FSL & 591°FWL, SEC.36)): 0 feet	Depths are in feet
Coordinates are in feet referenced to Slot	Created by: wiljel02 on 3/28/2012

Location Information

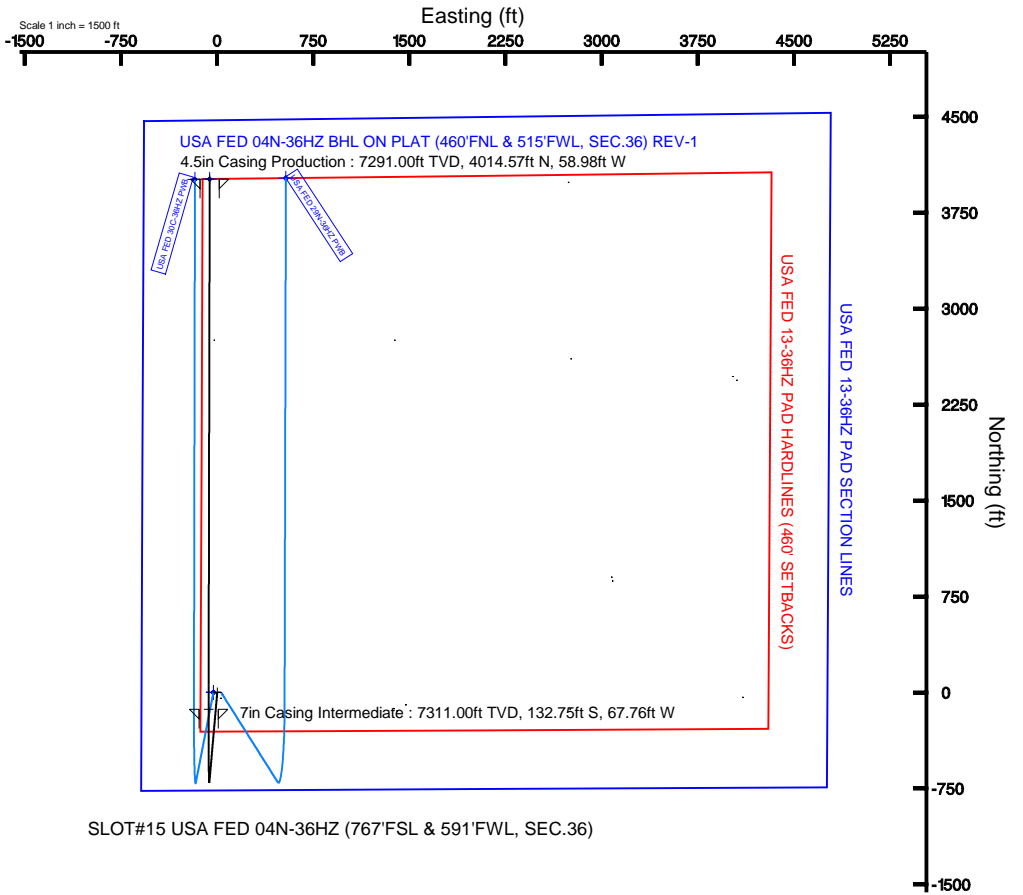
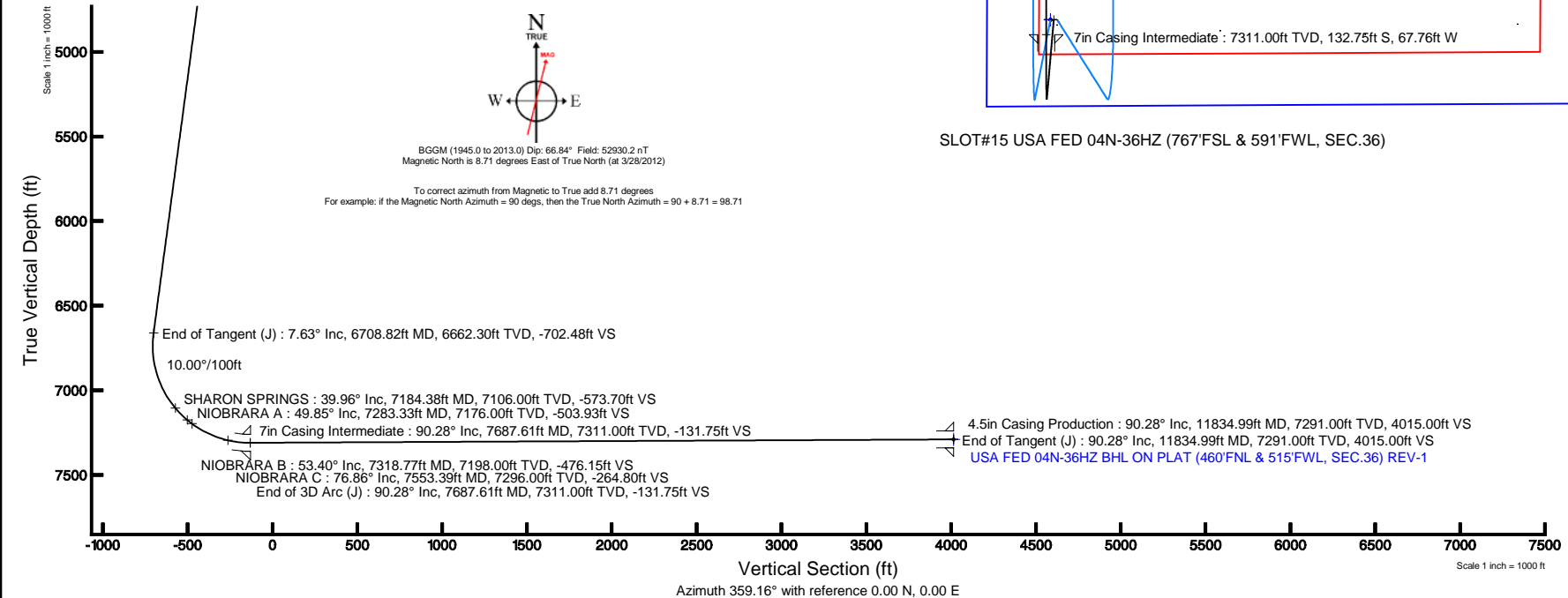
Facility Name			Grid East (US ft)	Grid North (US ft)	Latitude	Longitude
SEC.36-T3N-R66W			3214305.575	1310913.744	40°11'03.516"N	104°43'58.656"W
Slot	Local N (ft)	Local E (ft)	Grid East (US ft)	Grid North (US ft)	Latitude	Longitude
SLOT#15 USA FED 04N-36HZ (767°FSL & 591°FWL, SEC.36)	-2754.50	23.21	3214352.607	1308159.671	40°10'36.296"N	104°43'58.357"W
XTREME 6 (RKB) to Mud line (At Slot: SLOT#15 USA FED 04N-36HZ (767°FSL & 591°FWL, SEC.36))					5041ft	
Mean Sea Level to Mud line (At Slot: SLOT#15 USA FED 04N-36HZ (767°FSL & 591°FWL, SEC.36))					0ft	
XTREME 6 (RKB) to Mean Sea Level					5041ft	

Well Profile Data

Design Comment	MD (ft)	Inc (°)	Az (°)	TVD (ft)	Local N (ft)	Local E (ft)	DLS (°/100ft)	VS (ft)
Tie On	17.00	0.000	185.000	17.00	0.00	0.00	0.00	0.00
End of Tangent	1200.00	0.000	185.000	1200.00	0.00	0.00	0.00	0.00
End of Build (J)	1581.50	7.630	185.000	1580.37	-25.27	-2.21	2.00	-25.23
End of Tangent (J)	6708.82	7.630	185.000	6662.30	-703.46	-61.54	0.00	-702.48
End of 3D Arc (J)	7687.61	90.276	0.121	7311.00	-132.76	-67.76	10.00	-131.75
End of Tangent (J)	11834.99	90.276	0.121	7291.00	4014.57	-58.98	0.00	4015.00

Targets

Name	MD (ft)	TVD (ft)	Local E (ft)	Grid East (US ft)	Grid North (US ft)	Latitude	Longitude
USA FED 13-36HZ PAD SECTION LINES		0.00	-0.30	3214322.42	1308159.11	40°10'36.293"N	104°43'58.746"W
USA FED 04N-36HZ BHL ON PLAT (460°FNL & 515°FWL, SEC.36) REV-1	11834.99	7291.00	4014.57	3214258.90	1312173.40	40°11'15.968"N	104°43'59.117"W
USA FED 13-36HZ PAD HARDLINES (460' SETBACKS)		7440.00	-0.30	3214322.42	1308159.11	40°10'36.293"N	104°43'58.746"W





Planned Wellpath Report

USA FED 04N-36HZ (PERMIT) PWP

Page 1 of 5



REFERENCE WELLPATH IDENTIFICATION

Operator	KERR-MCGEE OIL & GAS ONSHORE LP	Slot	SLOT#15 USA FED 04N-36HZ (767'FSL & 591'FWL, SEC.36)
Area	COLORADO	Well	USA FED 04N-36HZ
Field	WELD COUNTY (KERR MCGEE)	Wellbore	USA FED 04N-36HZ PWB
Facility	SEC.36-T3N-R66W		

REPORT SETUP INFORMATION

Projection System	NAD83 / Lambert Colorado SP, Northern Zone (501), US feet	Software System	WellArchitect® 3.0.2
North Reference	True	User	Wilsjef02
Scale	0.999958	Report Generated	3/28/2012 at 16:13:40
Convergence at slot	0.50° East	Database/Source file	WellArchitectDB/USA_FED_04N-36HZ_PWB.xml

WELLPATH LOCATION

	Local coordinates		Grid coordinates		Geographic coordinates	
	North[ft]	East[ft]	Easting[US ft]	Northing[US ft]	Latitude	Longitude
Slot Location	-2754.50	23.21	3214352.61	1308159.67	40°10'36.296"N	104°43'58.357"W
Facility Reference Pt			3214305.58	1310913.74	40°11'03.516"N	104°43'58.656"W
Field Reference Pt			3197771.84	1268891.29	40°04'09.600"N	104°47'36.000"W

WELLPATH DATUM

Calculation method	Minimum curvature	XTREME 6 (RKB) to Facility Vertical Datum	5041.00ft
Horizontal Reference Pt	Slot	XTREME 6 (RKB) to Mean Sea Level	5041.00ft
Vertical Reference Pt	XTREME 6 (RKB)	XTREME 6 (RKB) to Mud Line at Slot (SLOT#15 USA FED 04N-36HZ (767'FSL & 591'FWL, SEC.36))	5041.00ft
MD Reference Pt	XTREME 6 (RKB)	Section Origin	N 0.00, E 0.00 ft
Field Vertical Reference	Mean Sea Level	Section Azimuth	359.16°



Planned Wellpath Report

USA FED 04N-36HZ (PERMIT) PWP

Page 2 of 5



REFERENCE WELLPATH IDENTIFICATION

Operator	KERR-MCGEE OIL & GAS ONSHORE LP	Slot	SLOT#15 USA FED 04N-36HZ (767'FSL & 591'FWL, SEC.36)
Area	COLORADO	Well	USA FED 04N-36HZ
Field	WELD COUNTY (KERR MCGEE)	Wellbore	USA FED 04N-36HZ PWB
Facility	SEC.36-T3N-R66W		

WELLPATH DATA (131 stations) † = interpolated/extrapolated station

MD [ft]	Inclination [°]	Azimuth [°]	TVD [ft]	Vert Sect [ft]	North [ft]	East [ft]	Latitude	Longitude	DLS [°/100ft]	Comments
0.00†	0.000	185.000	0.00	0.00	0.00	0.00	40°10'36.296"N	104°43'58.357"W	0.00	
17.00	0.000	185.000	17.00	0.00	0.00	0.00	40°10'36.296"N	104°43'58.357"W	0.00	Tie On
117.00†	0.000	185.000	117.00	0.00	0.00	0.00	40°10'36.296"N	104°43'58.357"W	0.00	
217.00†	0.000	185.000	217.00	0.00	0.00	0.00	40°10'36.296"N	104°43'58.357"W	0.00	
317.00†	0.000	185.000	317.00	0.00	0.00	0.00	40°10'36.296"N	104°43'58.357"W	0.00	
417.00†	0.000	185.000	417.00	0.00	0.00	0.00	40°10'36.296"N	104°43'58.357"W	0.00	
517.00†	0.000	185.000	517.00	0.00	0.00	0.00	40°10'36.296"N	104°43'58.357"W	0.00	
617.00†	0.000	185.000	617.00	0.00	0.00	0.00	40°10'36.296"N	104°43'58.357"W	0.00	
717.00†	0.000	185.000	717.00	0.00	0.00	0.00	40°10'36.296"N	104°43'58.357"W	0.00	
817.00†	0.000	185.000	817.00	0.00	0.00	0.00	40°10'36.296"N	104°43'58.357"W	0.00	
917.00†	0.000	185.000	917.00	0.00	0.00	0.00	40°10'36.296"N	104°43'58.357"W	0.00	
1017.00†	0.000	185.000	1017.00	0.00	0.00	0.00	40°10'36.296"N	104°43'58.357"W	0.00	
1117.00†	0.000	185.000	1117.00	0.00	0.00	0.00	40°10'36.296"N	104°43'58.357"W	0.00	
1200.00	0.000	185.000	1200.00	0.00	0.00	0.00	40°10'36.296"N	104°43'58.357"W	0.00	End of Tangent
1217.00†	0.340	185.000	1217.00	-0.05	-0.05	0.00	40°10'36.296"N	104°43'58.357"W	2.00	
1317.00†	2.340	185.000	1316.97	-2.38	-2.38	-0.21	40°10'36.272"N	104°43'58.360"W	2.00	
1417.00†	4.340	185.000	1416.79	-8.17	-8.18	-0.72	40°10'36.215"N	104°43'58.366"W	2.00	
1517.00†	6.340	185.000	1516.35	-17.43	-17.45	-1.53	40°10'36.124"N	104°43'58.377"W	2.00	
1581.50	7.630	185.000	1580.37	-25.23	-25.27	-2.21	40°10'36.046"N	104°43'58.385"W	2.00	End of Build (J)
1617.00†	7.630	185.000	1615.56	-29.92	-29.96	-2.62	40°10'36.000"N	104°43'58.391"W	0.00	
1717.00†	7.630	185.000	1714.67	-43.13	-43.19	-3.78	40°10'35.869"N	104°43'58.406"W	0.00	
1817.00†	7.630	185.000	1813.79	-56.34	-56.42	-4.94	40°10'35.738"N	104°43'58.421"W	0.00	
1917.00†	7.630	185.000	1912.90	-69.55	-69.64	-6.09	40°10'35.608"N	104°43'58.435"W	0.00	
2017.00†	7.630	185.000	2012.02	-82.76	-82.87	-7.25	40°10'35.477"N	104°43'58.450"W	0.00	
2117.00†	7.630	185.000	2111.13	-95.96	-96.10	-8.41	40°10'35.346"N	104°43'58.465"W	0.00	
2217.00†	7.630	185.000	2210.25	-109.17	-109.33	-9.56	40°10'35.216"N	104°43'58.480"W	0.00	
2317.00†	7.630	185.000	2309.36	-122.38	-122.55	-10.72	40°10'35.085"N	104°43'58.495"W	0.00	
2417.00†	7.630	185.000	2408.48	-135.59	-135.78	-11.88	40°10'34.954"N	104°43'58.510"W	0.00	
2517.00†	7.630	185.000	2507.59	-148.80	-149.01	-13.04	40°10'34.824"N	104°43'58.525"W	0.00	
2617.00†	7.630	185.000	2606.71	-162.01	-162.23	-14.19	40°10'34.693"N	104°43'58.540"W	0.00	
2717.00†	7.630	185.000	2705.82	-175.22	-175.46	-15.35	40°10'34.562"N	104°43'58.555"W	0.00	
2817.00†	7.630	185.000	2804.93	-188.42	-188.69	-16.51	40°10'34.431"N	104°43'58.570"W	0.00	
2917.00†	7.630	185.000	2904.05	-201.63	-201.91	-17.67	40°10'34.301"N	104°43'58.585"W	0.00	
3017.00†	7.630	185.000	3003.16	-214.84	-215.14	-18.82	40°10'34.170"N	104°43'58.599"W	0.00	
3117.00†	7.630	185.000	3102.28	-228.05	-228.37	-19.98	40°10'34.039"N	104°43'58.614"W	0.00	
3217.00†	7.630	185.000	3201.39	-241.26	-241.60	-21.14	40°10'33.909"N	104°43'58.629"W	0.00	
3317.00†	7.630	185.000	3300.51	-254.47	-254.82	-22.29	40°10'33.778"N	104°43'58.644"W	0.00	
3417.00†	7.630	185.000	3399.62	-267.68	-268.05	-23.45	40°10'33.647"N	104°43'58.659"W	0.00	
3517.00†	7.630	185.000	3498.74	-280.88	-281.28	-24.61	40°10'33.516"N	104°43'58.674"W	0.00	
3617.00†	7.630	185.000	3597.85	-294.09	-294.50	-25.77	40°10'33.386"N	104°43'58.689"W	0.00	
3717.00†	7.630	185.000	3696.97	-307.30	-307.73	-26.92	40°10'33.255"N	104°43'58.704"W	0.00	
3817.00†	7.630	185.000	3796.08	-320.51	-320.96	-28.08	40°10'33.124"N	104°43'58.719"W	0.00	
3917.00†	7.630	185.000	3895.20	-333.72	-334.18	-29.24	40°10'32.994"N	104°43'58.734"W	0.00	
4017.00†	7.630	185.000	3994.31	-346.93	-347.41	-30.39	40°10'32.863"N	104°43'58.749"W	0.00	
4085.29†	7.630	185.000	4062.00	-355.95	-356.45	-31.18	40°10'32.774"N	104°43'58.759"W	0.00	PARKMAN
4117.00†	7.630	185.000	4093.42	-360.14	-360.64	-31.55	40°10'32.732"N	104°43'58.763"W	0.00	
4217.00†	7.630	185.000	4192.54	-373.34	-373.87	-32.71	40°10'32.601"N	104°43'58.778"W	0.00	
4317.00†	7.630	185.000	4291.65	-386.55	-387.09	-33.87	40°10'32.471"N	104°43'58.793"W	0.00	
4417.00†	7.630	185.000	4390.77	-399.76	-400.32	-35.02	40°10'32.340"N	104°43'58.808"W	0.00	
4517.00†	7.630	185.000	4489.88	-412.97	-413.55	-36.18	40°10'32.209"N	104°43'58.823"W	0.00	
4617.00†	7.630	185.000	4589.00	-426.18	-426.77	-37.34	40°10'32.079"N	104°43'58.838"W	0.00	
4622.05†	7.630	185.000	4594.00	-426.85	-427.44	-37.40	40°10'32.072"N	104°43'58.839"W	0.00	SUSSEX
4717.00†	7.630	185.000	4688.11	-439.39	-440.00	-38.50	40°10'31.948"N	104°43'58.853"W	0.00	
4817.00†	7.630	185.000	4787.23	-452.60	-453.23	-39.65	40°10'31.817"N	104°43'58.868"W	0.00	
4917.00†	7.630	185.000	4886.34	-465.81	-466.45	-40.81	40°10'31.686"N	104°43'58.883"W	0.00	
5017.00†	7.630	185.000	4985.46	-479.01	-479.68	-41.97	40°10'31.556"N	104°43'58.898"W	0.00	
5117.00†	7.630	185.000	5084.57	-492.22	-492.91	-43.12	40°10'31.425"N	104°43'58.913"W	0.00	
5217.00†	7.630	185.000	5183.69	-505.43	-506.14	-44.28	40°10'31.294"N	104°43'58.927"W	0.00	
5317.00†	7.630	185.000	5282.80	-518.64	-519.36	-45.44	40°10'31.164"N	104°43'58.942"W	0.00	
5417.00†	7.630	185.000	5381.91	-531.85	-532.59	-46.60	40°10'31.033"N	104°43'58.957"W	0.00	



Planned Wellpath Report

USA FED 04N-36HZ (PERMIT) PWP

Page 3 of 5



REFERENCE WELLPATH IDENTIFICATION

Operator	KERR-MCGEE OIL & GAS ONSHORE LP	Slot	SLOT#15 USA FED 04N-36HZ (767'FSL & 591'FWL, SEC.36)
Area	COLORADO	Well	USA FED 04N-36HZ
Field	WELD COUNTY (KERR MCGEE)	Wellbore	USA FED 04N-36HZ PWB
Facility	SEC.36-T3N-R66W		

WELLPATH DATA (131 stations) † = interpolated/extrapolated station

MD [ft]	Inclination [°]	Azimuth [°]	TVD [ft]	Vert Sect [ft]	North [ft]	East [ft]	Latitude	Longitude	DLS [°/100ft]	Comments
5517.00†	7.630	185.000	5481.03	-545.06	-545.82	-47.75	40°10'30.902"N	104°43'58.972"W	0.00	
5617.00†	7.630	185.000	5580.14	-558.27	-559.04	-48.91	40°10'30.772"N	104°43'58.987"W	0.00	
5717.00†	7.630	185.000	5679.26	-571.47	-572.27	-50.07	40°10'30.641"N	104°43'59.002"W	0.00	
5817.00†	7.630	185.000	5778.37	-584.68	-585.50	-51.22	40°10'30.510"N	104°43'59.017"W	0.00	
5917.00†	7.630	185.000	5877.49	-597.89	-598.72	-52.38	40°10'30.379"N	104°43'59.032"W	0.00	
6017.00†	7.630	185.000	5976.60	-611.10	-611.95	-53.54	40°10'30.249"N	104°43'59.047"W	0.00	
6117.00†	7.630	185.000	6075.72	-624.31	-625.18	-54.70	40°10'30.118"N	104°43'59.062"W	0.00	
6217.00†	7.630	185.000	6174.83	-637.52	-638.41	-55.85	40°10'29.987"N	104°43'59.077"W	0.00	
6317.00†	7.630	185.000	6273.95	-650.73	-651.63	-57.01	40°10'29.857"N	104°43'59.091"W	0.00	
6417.00†	7.630	185.000	6373.06	-663.93	-664.86	-58.17	40°10'29.726"N	104°43'59.106"W	0.00	
6517.00†	7.630	185.000	6472.18	-677.14	-678.09	-59.32	40°10'29.595"N	104°43'59.121"W	0.00	
6617.00†	7.630	185.000	6571.29	-690.35	-691.31	-60.48	40°10'29.464"N	104°43'59.136"W	0.00	
6708.82	7.630	185.000	6662.30	-702.48	-703.46	-61.54	40°10'29.344"N	104°43'59.150"W	0.00	End of Tangent (J)
6717.00†	6.815	185.592	6670.41	-703.50	-704.48	-61.64	40°10'29.334"N	104°43'59.151"W	10.00	
6817.00†	3.281	348.649	6770.23	-706.59	-707.59	-62.78	40°10'29.304"N	104°43'59.166"W	10.00	
6917.00†	13.232	357.339	6869.07	-692.30	-693.32	-63.88	40°10'29.445"N	104°43'59.180"W	10.00	
7017.00†	23.225	358.596	6963.93	-661.07	-662.09	-64.90	40°10'29.753"N	104°43'59.193"W	10.00	
7117.00†	33.222	359.121	7051.93	-613.84	-614.87	-65.80	40°10'30.220"N	104°43'59.205"W	10.00	
7184.38†	39.958	359.339	7106.00	-573.70	-574.74	-66.34	40°10'30.616"N	104°43'59.212"W	10.00	SHARON SPRINGS
7217.00†	43.220	359.423	7130.40	-552.05	-553.09	-66.57	40°10'30.830"N	104°43'59.215"W	10.00	
7283.33†	49.852	359.567	7176.00	-503.93	-504.97	-66.99	40°10'31.306"N	104°43'59.220"W	10.00	NIOBRARA A
7317.00†	53.219	359.630	7196.94	-477.58	-478.61	-67.18	40°10'31.566"N	104°43'59.222"W	10.00	
7318.77†	53.396	359.633	7198.00	-476.15	-477.19	-67.19	40°10'31.580"N	104°43'59.223"W	10.00	NIOBRARA B
7417.00†	63.218	359.788	7249.54	-392.68	-393.72	-67.60	40°10'32.405"N	104°43'59.228"W	10.00	
7517.00†	73.217	359.921	7286.60	-299.95	-300.97	-67.83	40°10'33.322"N	104°43'59.231"W	10.00	
7553.39†	76.856	359.966	7296.00	-264.80	-265.82	-67.87	40°10'33.669"N	104°43'59.231"W	10.00	NIOBRARA C
7617.00†	83.216	0.040	7307.00	-202.19	-203.21	-67.86	40°10'34.288"N	104°43'59.231"W	10.00	
7687.61	90.276	0.121	7311.00	-131.75	-132.76	-67.76	40°10'34.984"N	104°43'59.230"W	10.00	End of 3D Arc (J)
7717.00†	90.276	0.121	7310.86	-102.36	-103.37	-67.70	40°10'35.275"N	104°43'59.229"W	0.00	
7817.00†	90.276	0.121	7310.38	-2.37	-3.37	-67.49	40°10'36.263"N	104°43'59.226"W	0.00	
7917.00†	90.276	0.121	7309.90	97.61	96.63	-67.28	40°10'37.251"N	104°43'59.224"W	0.00	
8017.00†	90.276	0.121	7309.42	197.59	196.63	-67.07	40°10'38.239"N	104°43'59.221"W	0.00	
8117.00†	90.276	0.121	7308.93	297.58	296.63	-66.85	40°10'39.227"N	104°43'59.218"W	0.00	
8217.00†	90.276	0.121	7308.45	397.56	396.63	-66.64	40°10'40.215"N	104°43'59.216"W	0.00	
8317.00†	90.276	0.121	7307.97	497.55	496.63	-66.43	40°10'41.204"N	104°43'59.213"W	0.00	
8417.00†	90.276	0.121	7307.49	597.53	596.63	-66.22	40°10'42.192"N	104°43'59.210"W	0.00	
8517.00†	90.276	0.121	7307.00	697.52	696.62	-66.01	40°10'43.180"N	104°43'59.207"W	0.00	
8617.00†	90.276	0.121	7306.52	797.50	796.62	-65.80	40°10'44.168"N	104°43'59.205"W	0.00	
8717.00†	90.276	0.121	7306.04	897.49	896.62	-65.58	40°10'45.156"N	104°43'59.202"W	0.00	
8817.00†	90.276	0.121	7305.56	997.47	996.62	-65.37	40°10'46.145"N	104°43'59.199"W	0.00	
8917.00†	90.276	0.121	7305.07	1097.46	1096.62	-65.16	40°10'47.133"N	104°43'59.196"W	0.00	
9017.00†	90.276	0.121	7304.59	1197.44	1196.62	-64.95	40°10'48.121"N	104°43'59.194"W	0.00	
9117.00†	90.276	0.121	7304.11	1297.43	1296.62	-64.74	40°10'49.109"N	104°43'59.191"W	0.00	
9217.00†	90.276	0.121	7303.63	1397.41	1396.61	-64.53	40°10'50.097"N	104°43'59.188"W	0.00	
9317.00†	90.276	0.121	7303.15	1497.40	1496.61	-64.31	40°10'51.086"N	104°43'59.186"W	0.00	
9417.00†	90.276	0.121	7302.66	1597.38	1596.61	-64.10	40°10'52.074"N	104°43'59.183"W	0.00	
9517.00†	90.276	0.121	7302.18	1697.37	1696.61	-63.89	40°10'53.062"N	104°43'59.180"W	0.00	
9617.00†	90.276	0.121	7301.70	1797.35	1796.61	-63.68	40°10'54.050"N	104°43'59.177"W	0.00	
9717.00†	90.276	0.121	7301.22	1897.33	1896.61	-63.47	40°10'55.038"N	104°43'59.175"W	0.00	
9817.00†	90.276	0.121	7300.73	1997.32	1996.61	-63.26	40°10'56.026"N	104°43'59.172"W	0.00	
9917.00†	90.276	0.121	7300.25	2097.30	2096.60	-63.04	40°10'57.015"N	104°43'59.169"W	0.00	
10017.00†	90.276	0.121	7299.77	2197.29	2196.60	-62.83	40°10'58.003"N	104°43'59.167"W	0.00	
10117.00†	90.276	0.121	7299.29	2297.27	2296.60	-62.62	40°10'58.991"N	104°43'59.164"W	0.00	
10217.00†	90.276	0.121	7298.80	2397.26	2396.60	-62.41	40°10'59.979"N	104°43'59.161"W	0.00	
10317.00†	90.276	0.121	7298.32	2497.24	2496.60	-62.20	40°11'00.967"N	104°43'59.158"W	0.00	
10417.00†	90.276	0.121	7297.84	2597.23	2596.60	-61.99	40°11'01.956"N	104°43'59.156"W	0.00	
10517.00†	90.276	0.121	7297.36	2697.21	2696.60	-61.77	40°11'02.944"N	104°43'59.153"W	0.00	
10617.00†	90.276	0.121	7296.87	2797.20	2796.59	-61.56	40°11'03.932"N	104°43'59.150"W	0.00	
10717.00†	90.276	0.121	7296.39	2897.18	2896.59	-61.35	40°11'04.920"N	104°43'59.147"W	0.00	
10817.00†	90.276	0.121	7295.91	2997.17	2996.59	-61.14	40°11'05.908"N	104°43'59.145"W	0.00	



Planned Wellpath Report

USA FED 04N-36HZ (PERMIT) PWP

Page 4 of 5



REFERENCE WELLPATH IDENTIFICATION

Operator	KERR-MCGEE OIL & GAS ONSHORE LP	Slot	SLOT#15 USA FED 04N-36HZ (767'FSL & 591'FWL, SEC.36)
Area	COLORADO	Well	USA FED 04N-36HZ
Field	WELD COUNTY (KERR MCGEE)	Wellbore	USA FED 04N-36HZ PWB
Facility	SEC.36-T3N-R66W		

WELLPATH DATA (131 stations) † = interpolated/extrapolated station

MD [ft]	Inclination [°]	Azimuth [°]	TVD [ft]	Vert Sect [ft]	North [ft]	East [ft]	Latitude	Longitude	DLS [°/100ft]	Comments
10917.00†	90.276	0.121	7295.43	3097.15	3096.59	-60.93	40°11'06.897"N	104°43'59.142"W	0.00	
11017.00†	90.276	0.121	7294.95	3197.14	3196.59	-60.72	40°11'07.885"N	104°43'59.139"W	0.00	
11117.00†	90.276	0.121	7294.46	3297.12	3296.59	-60.50	40°11'08.873"N	104°43'59.137"W	0.00	
11217.00†	90.276	0.121	7293.98	3397.11	3396.59	-60.29	40°11'09.861"N	104°43'59.134"W	0.00	
11317.00†	90.276	0.121	7293.50	3497.09	3496.58	-60.08	40°11'10.849"N	104°43'59.131"W	0.00	
11417.00†	90.276	0.121	7293.02	3597.07	3596.58	-59.87	40°11'11.837"N	104°43'59.128"W	0.00	
11517.00†	90.276	0.121	7292.53	3697.06	3696.58	-59.66	40°11'12.826"N	104°43'59.126"W	0.00	
11617.00†	90.276	0.121	7292.05	3797.04	3796.58	-59.44	40°11'13.814"N	104°43'59.123"W	0.00	
11717.00†	90.276	0.121	7291.57	3897.03	3896.58	-59.23	40°11'14.802"N	104°43'59.120"W	0.00	
11817.00†	90.276	0.121	7291.09	3997.01	3996.58	-59.02	40°11'15.790"N	104°43'59.117"W	0.00	
11834.99	90.276	0.121	7291.00 ¹	4015.00	4014.57	-58.98	40°11'15.968"N	104°43'59.117"W	0.00	End of Tangent (J)

HOLE & CASING SECTIONS - Ref Wellbore: USA FED 04N-36HZ PWB Ref Wellpath: USA FED 04N-36HZ (PERMIT) PWP

String/Diameter	Start MD [ft]	End MD [ft]	Interval [ft]	Start TVD [ft]	End TVD [ft]	Start N/S [ft]	Start E/W [ft]	End N/S [ft]	End E/W [ft]
13.5in Open Hole	17.00	800.00	783.00	17.00	800.00	0.00	0.00	0.00	0.00
9.625in Casing Surface	17.00	800.00	783.00	17.00	800.00	0.00	0.00	0.00	0.00
8.75in Open Hole	800.00	7687.61	6887.61	800.00	7311.00	0.00	0.00	-132.75	-67.76
7in Casing Intermediate	17.00	7687.61	7670.61	17.00	7311.00	0.00	0.00	-132.75	-67.76
6.125in Open Hole	7687.61	11834.99	4147.38	7311.00	7291.00	-132.75	-67.76	4014.57	-58.98
4.5in Casing Production	17.00	11834.99	11817.99	17.00	7291.00	0.00	0.00	4014.57	-58.98

TARGETS

Name	MD [ft]	TVD [ft]	North [ft]	East [ft]	Grid East [US ft]	Grid North [US ft]	Latitude	Longitude	Shape
USA FED 13-36HZ PAD SECTION LINES		0.00	-0.30	-30.20	3214322.42	1308159.11	40°10'36.293"N	104°43'58.746"W	polygon
1) USA FED 04N-36HZ BHL ON PLAT (460'FNL & 515'FWL, SEC.36) REV-1	11834.99	7291.00	4014.57	-58.98	3214258.90	1312173.40	40°11'15.968"N	104°43'59.117"W	point
USA FED 13-36HZ PAD HARDLINES (460' SETBACKS)		7440.00	-0.30	-30.20	3214322.42	1308159.11	40°10'36.293"N	104°43'58.746"W	polygon

SURVEY PROGRAM - Ref Wellbore: USA FED 04N-36HZ PWB Ref Wellpath: USA FED 04N-36HZ (PERMIT) PWP

Start MD [ft]	End MD [ft]	Positional Uncertainty Model	Log Name/Comment	Wellbore
17.00	11834.99	NaviTrak (Standard)		USA FED 04N-36HZ PWB



Planned Wellpath Report

USA FED 04N-36HZ (PERMIT) PWP

Page 5 of 5

**REFERENCE WELLPATH IDENTIFICATION**

Operator	KERR-MCGEE OIL & GAS ONSHORE LP	Slot	SLOT#15 USA FED 04N-36HZ (767'FSL & 591'FWL, SEC.36)
Area	COLORADO	Well	USA FED 04N-36HZ
Field	WELD COUNTY (KERR MCGEE)	Wellbore	USA FED 04N-36HZ PWB
Facility	SEC.36-T3N-R66W		

WELLPATH COMMENTS

MD [ft]	Inclination [°]	Azimuth [°]	TVD [ft]	Comment
4085.29	7.630	185.000	4062.00	PARKMAN
4622.05	7.630	185.000	4594.00	SUSSEX
7184.38	39.958	359.339	7106.00	SHARON SPRINGS
7283.33	49.852	359.567	7176.00	NIOBRARA A
7318.77	53.396	359.633	7198.00	NIOBRARA B
7553.39	76.856	359.966	7296.00	NIOBRARA C