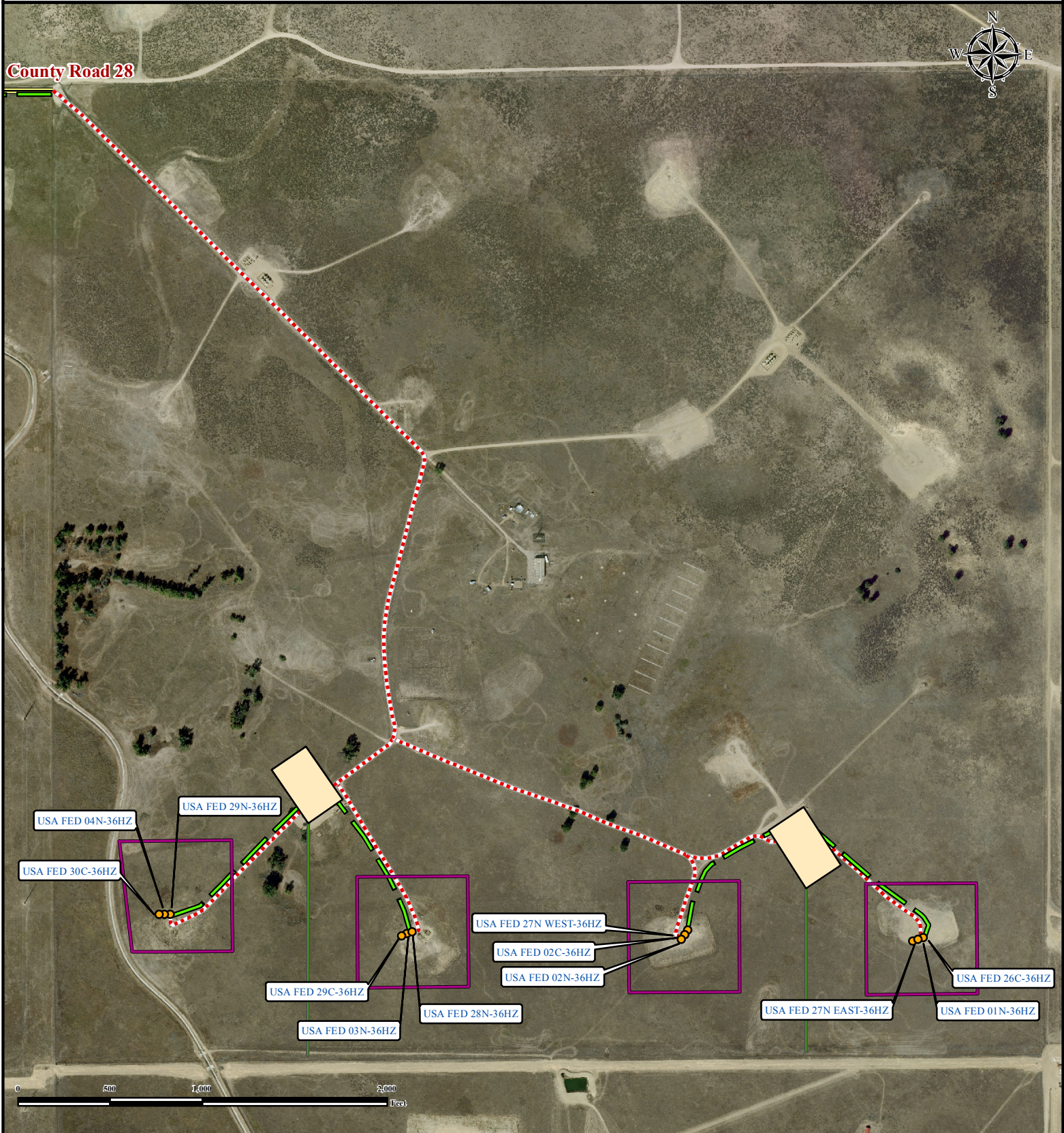


# USA FED 29N-36HZ

# ACCESS ROAD

SECTION 36, TOWNSHIP 3 NORTH, RANGE 66 WEST OF THE 6TH PRINCIPAL MERIDIAN



Legend		Proposed Flowline	Public Road	Proposed Access Road	Section Boundary
Proposed Well	Proposed Oil Pipeline	Proposed Facility	Proposed Pad	QtrQtr	

**PFS** *Use our resources to find yours!*  
[www.petro-fs.com](http://www.petro-fs.com)  
 (303) 928-7128

Field Date: 01/19/2012  
 Drafting Date: 01/30/2012  
 Drafter: DMM  
 Checked By: BHF

Data Sources:  
 - Aerial courtesy of Anadarko Petroleum Corporation (2010)

Prepared for: **Anadarko**   
 Petroleum Corporation  
**KERR-MCGEE OIL & GAS ONSHORE LP**