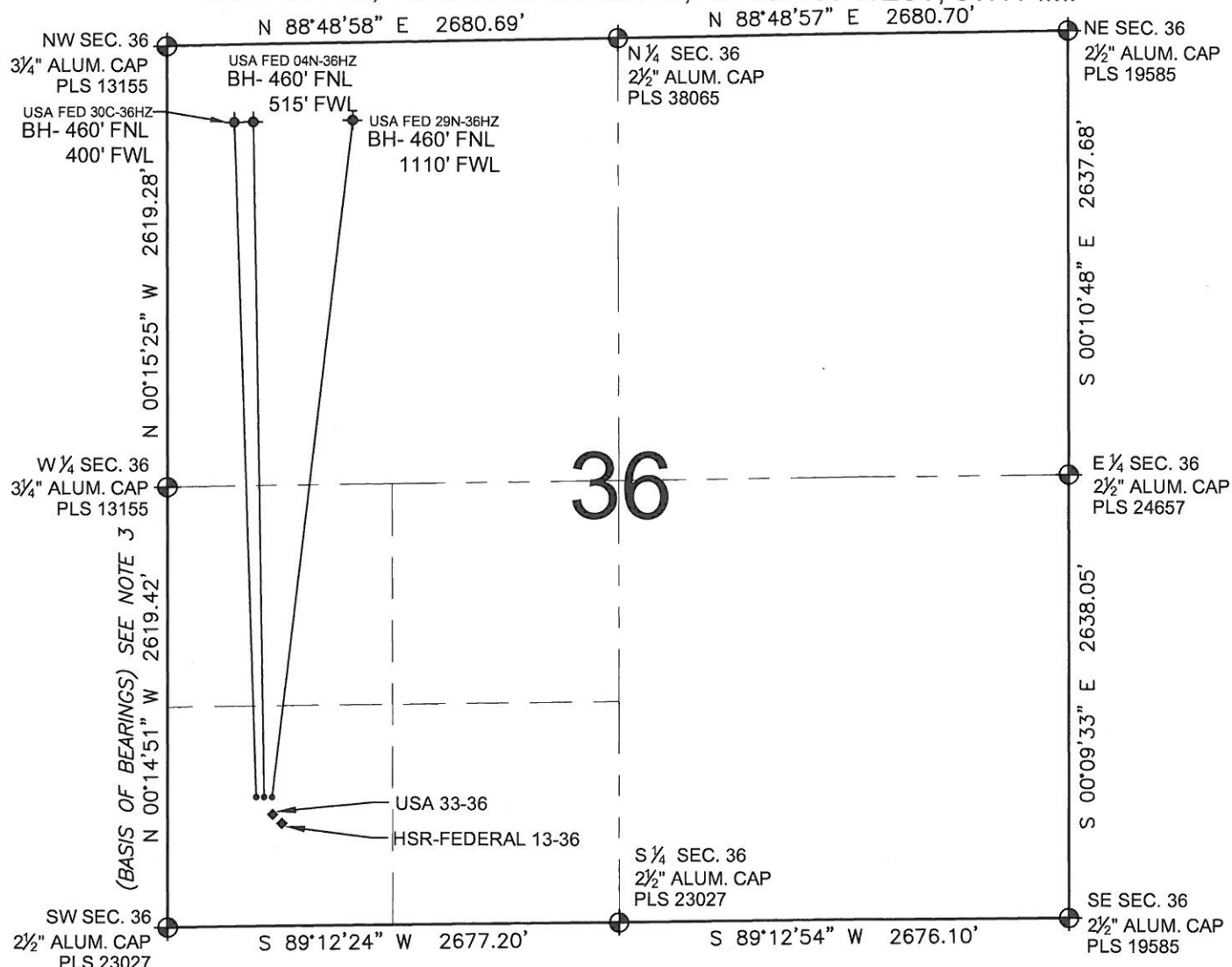


USA FED 29N-36HZ MULTI-WELL PLAN

SECTION 36, TOWNSHIP 3 NORTH, RANGE 66 WEST, 6TH P.M.



LEGEND

- ⊕ = EXISTING MONUMENT
- ⊙ = PROPOSED WELL
- ⬮ = BOTTOM HOLE
- ⬮ = EXISTING WELL
- BH= BOTTOM HOLE

NOTES:

- THIS FIELD SURVEY CONFORMS TO THE MINIMUM STANDARDS SET BY THE C.O.G.C.C., RULE NO. 215
- HORIZONTAL POSITIONS AND ORTHOMETRIC ELEVATIONS SHOWN AT THE WELL HEAD, ARE BASED ON GPS-RTK POSITIONS DERIVED FROM MINIMUM 2-HOUR STATIC OBSERVATIONS CORRECTED BY THE NATIONAL GEODETIC SURVEY ONLINE POSITIONING USER SERVICE, O.P.U.S. DATUM: HORIZONTAL = NAD83/2007, VERTICAL = NAVD88
- THE BASIS OF BEARINGS ARE STATE PLANE COORDINATE SYSTEM GRID BEARINGS SHOWN HEREON BETWEEN THE DESCRIBED THE MONUMENTS SHOWN HEREON.
- GRID DISTANCES ARE SHOWN, AS MEASURED IN THE FIELD, WITH TIES TO WELLS MEASURED PERPENDICULAR TO SECTION LINES.

NOTES:

- USA FED 30C-36HZ TO BE AT 767' FSL, 561' FWL.
- BOTTOM HOLE AT 460' FNL & 400' FWL.
- USA FED 04N-36HZ TO BE AT 767' FSL, 591' FWL.
- BOTTOM HOLE AT 460' FNL & 510' FWL.
- USA FED 29N-36HZ TO BE AT 767' FSL, 621' FWL.
- BOTTOM HOLE AT 460' FNL & 1110' FWL.
- USA 33-36 IS 719' FSL, 621' FWL.
- HSR-FEDERAL 13-36 IS 677' FSL, 648' FWL.

PREPARED BY:

PFS

Petroleum Field Services, LLC
1801 W. 13th Ave.
Denver, CO 80204



KERR-MCGEE OIL & GAS ONSHORE LP

FIELD DATE:

01-19-12

PAD NAME:

USA FED 3 PAD

DRAWING DATE:

01-20-12

SURFACE LOCATION:

WELD COUNTY, COLORADO

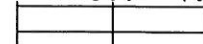
BY:

SMF

SW 1/4 SW 1/4, SEC. 36, T3N, R66W, 6TH P.M.



0 500 1000



SCALE: 1"=1000'