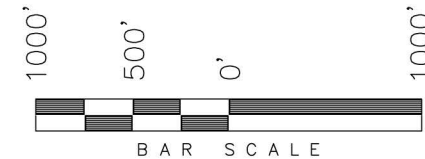


*ENCANA OIL & GAS (USA) INC*

WELL LOCATION, HMU 6-15AA (J6SEB),  
LOCATED AS SHOWN IN THE NW 1/4  
SE 1/4 OF SECTION 6, T8S, R92W, 6th  
P.M. GARFIELD COUNTY, COLORADO.

TARGET BOTTOM HOLE, HMU 6-15AA (J6SEB), LOCATED AS SHOWN IN THE SW 1/4 SE 1/4 OF SECTION 6, T8S, R92W, 6th P.M. GARFIELD COUNTY, COLORADO.



NOTES:

1. Well footages are measured at right angles to the Section Lines.
2. Bearings are based on Global Positioning Satellite observations.

THIS IS TO CERTIFY THAT THE ABOVE PLAT WAS  
PREPARED FROM FIELD NOTES OF THE SURVEYS  
MADE BY ME OR UNDER MY SUPERVISION. THE LOCATION  
HAS BEEN STAKED ON THE GROUND AS SHOWN ON THE  
PLAT, AND THAT THE SAID ARE TRUE AND CORRECT  
TO THE BEST OF MY KNOWLEDGE AND BELIEF.

REGISTERED LAND SURVEYOR  
REGISTRATION NO. 30125  
STATE OF COLORADO AND SURVEYING

TRI STATE LAND SURVEYING & CONSULTING

180 NORTH VERNAL AVE. — VERNAL, UTAH 84078  
(435) 781-2501

DATE SURVEYED:  
12-13-11

SURVEYED BY: C.D.S

SHEET |

DATE DRAWN:  
04-18-12

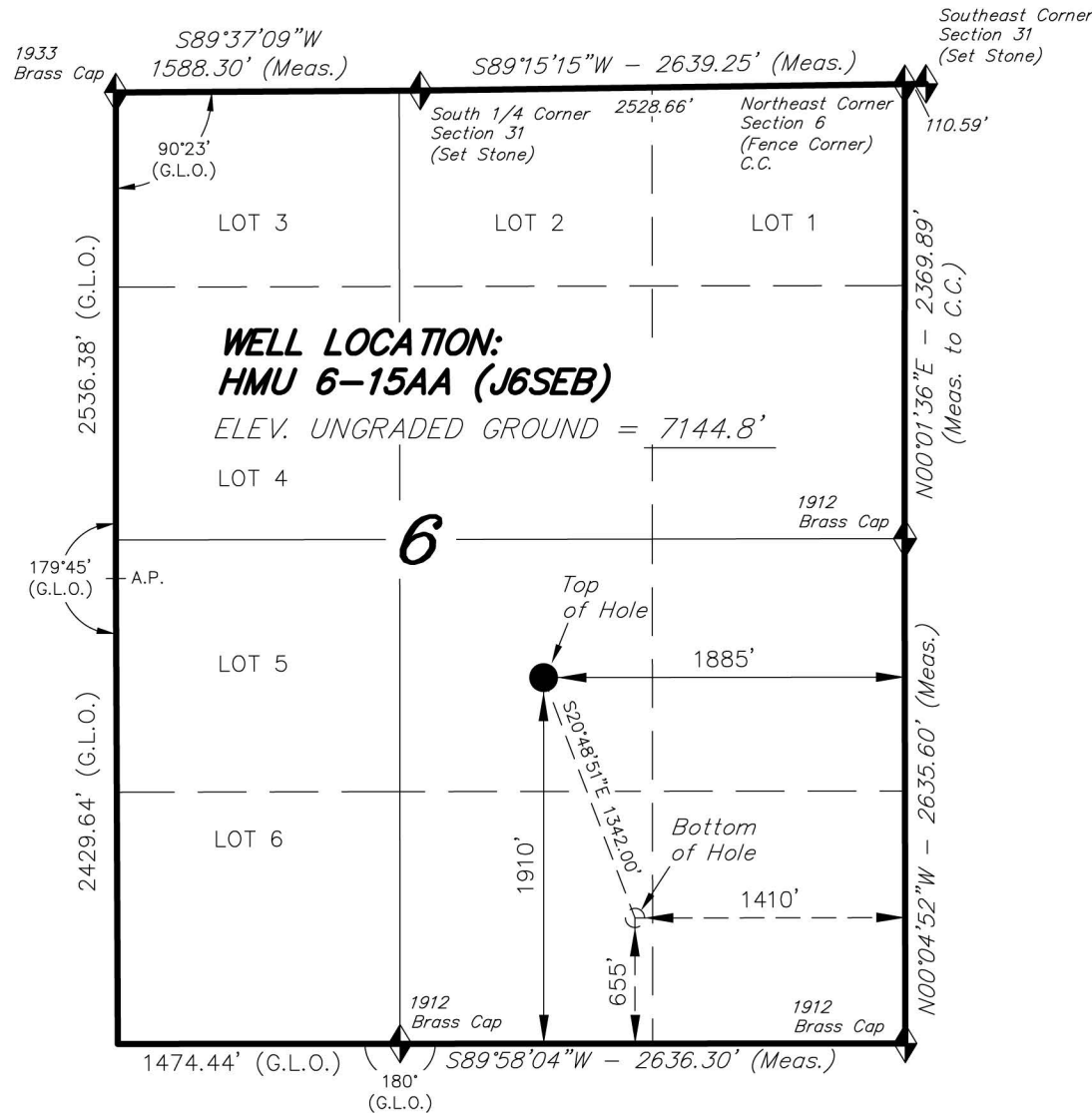
DRAWN BY: M.W.

2r

REVISED:  
12-17-12 M.W.

SCALE: 1" = 1000'

OF 8



= SECTION CORNERS LOCATED

Basis of elevation is the Rifle 2 Triangulation Station. 39°31'53.80" N Lat. & 107°47'07.78" W Long. (NAD 83). Elevation = 5323.1' (NAVD88).

NAD 83 (SURFACE HOLE LOCATION)		
LATITUDE	=	39°23'14.48" (39.387355°)
LONGITUDE	=	107°42'21.75" (107.706041°)
NAD 83 (BOTTOM HOLE LOCATION)		
LATITUDE	=	39°23'02.08" (39.383911°)
LONGITUDE	=	107°42'15.69" (107.704358°)