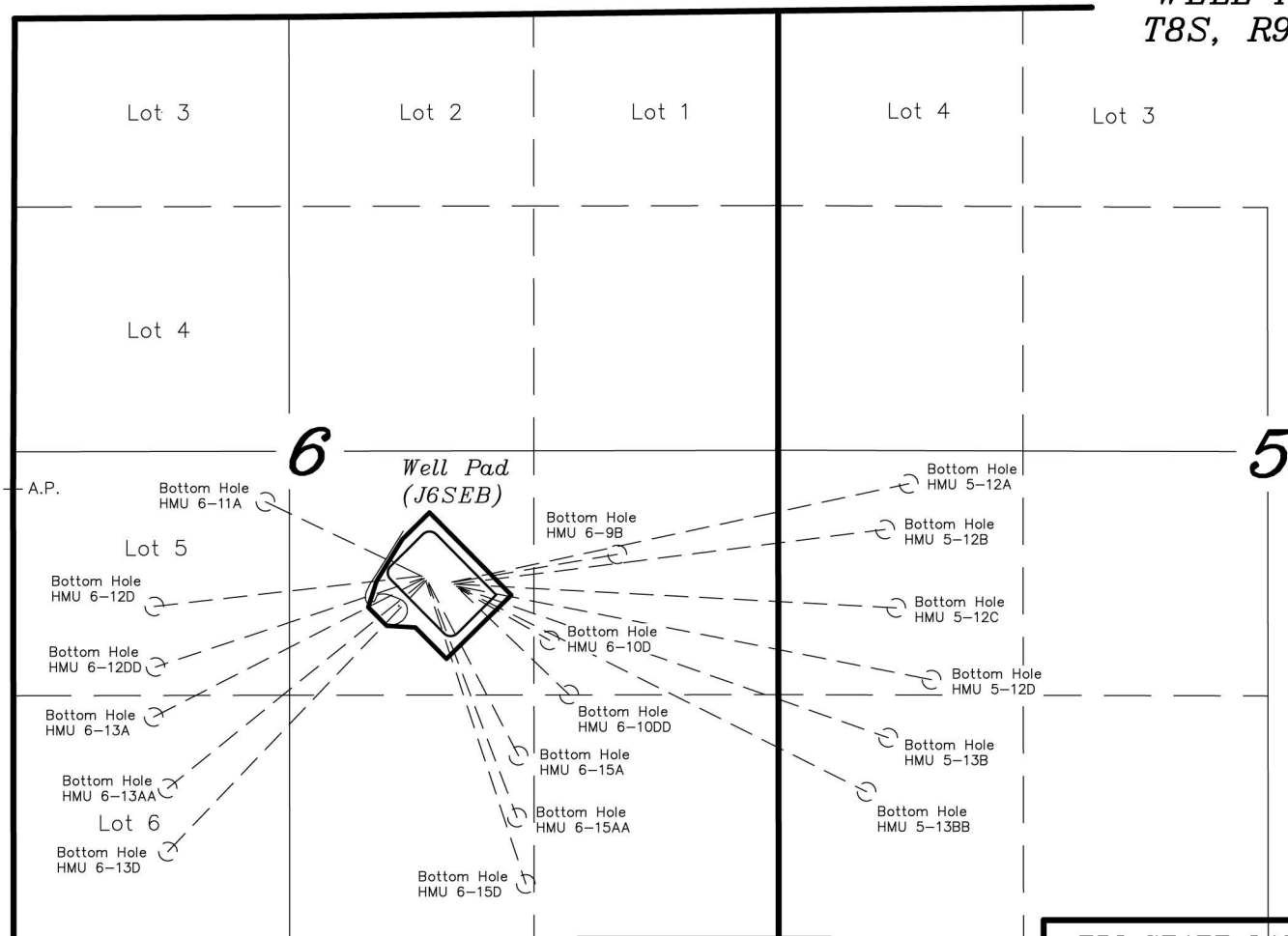


***T8S, R92W, 6th P.M.***

***ENCANA OIL & GAS (USA) INC***

***GENERAL MULTI WELL PLAN  
SECTION DRILLING MAP***

***WELL PAD (J6SEB)  
T8S, R92W, 6th P.M.***



***TRI STATE LAND SURVEYING & CONSULTING***

180 NORTH VERNAL AVE. — VERNAL, UTAH 84078  
(435) 781-2501

DATE SURVEYED:  
12-13-11

SURVEYED BY: C.D.S.

DATE DRAWN:  
12-04-12

DRAWN BY: M.W.

REVISED:  
01-23-13 M.W.

SCALE: 1" = 1000'

**SHEET**

**1**

**OF 8**