

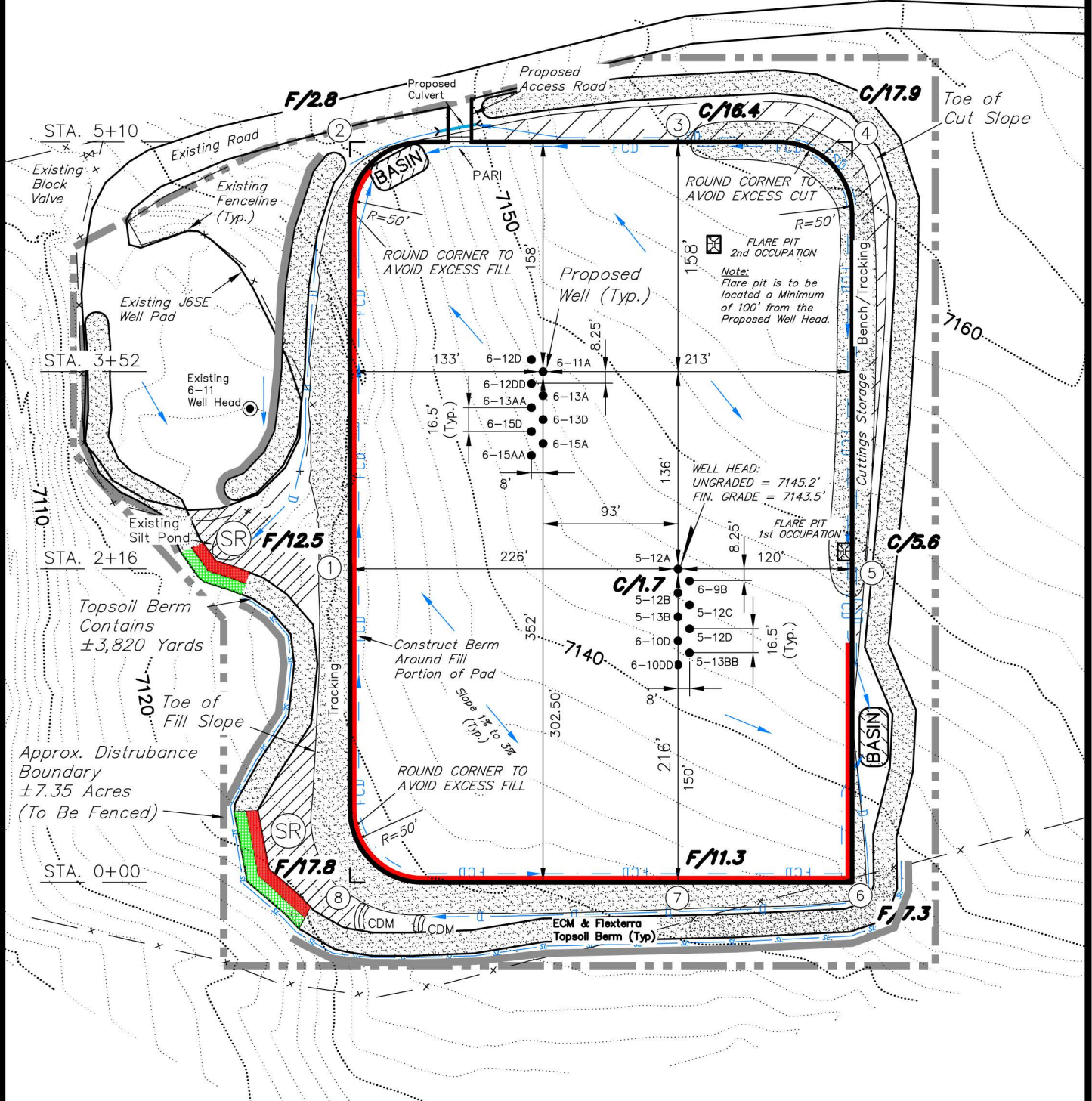
ENCANA OIL & GAS (USA) INC

CONSTRUCTION LAYOUT DRAWING

WELL PAD (J6SEB)

Section 6, T8S, R92W, 6th P.M.

PREVAILING WIND



NOTES:

- (1) Slope Track and/or Terrace All Slopes and Piles
- (2) Erosion Control & Seed Topsoil Stockpile
- (3) Erosion Control & Seed Outside Slopes of Stockpiles
- (4) Slope away from Substructure Areas 1% to 3% to Flow Control Ditch on Entire Pad
- (5) When Possible the Cut and Fill Slopes Directly Behind the Proposed Production Equipment Should be Reclaimed with 3:1 Slopes and Topsoil Spread During Pad Construction.
- (6) BMP Selection and Position may Change Depending on Actual Conditions Encountered During the Construction Process.
- (7) All CMP's Shall have Inlet and Outlet Protection.
- (8) All BMP's to be constructed to EnCana Oil & Gas (USA) Inc. BMP Manual's Specifications.

NOTE:
The topsoil & waste material area is calculated as being mounds containing 17,890 cubic yards of dirt (a 15% fluff factor is included). The mound areas are calculated with push slopes of 2.5:1 & fall slopes of 2.5:1.

LEGEND:

PARI = PAD/ACCESS ROAD INTERFACE
SR = SEDIMENT RESERVOIR
ST = SEDIMENT TRAP
R.O.P. = RUN-ON PROTECTION
= PERIMETER CONTROL (WATTLES)
CDM = CHECK DAM
FCD = FLOW CONTROL DITCH
ECB = EROSION CONTROL BLANKET
D = FILL DIVERSION TO SEDIMENT TRAP
SL = SLASH PILE
CSD = CUT SLOPE DIVERSION (BERM TOE OF CUT SLOPE)
VGB = VEGETATION BUFFER (UNDISTURBED LAND INSIDE PC)
= SEED, ECB & FLEX
= LEVEL SPREADER

SURVEYED BY: C.D.S. DATE SURVEYED: 12-13-11
DRAWN BY: M.W. DATE DRAWN: 09-06-12
SCALE: 1" = 100' REVISED: M.W. 01-23-13

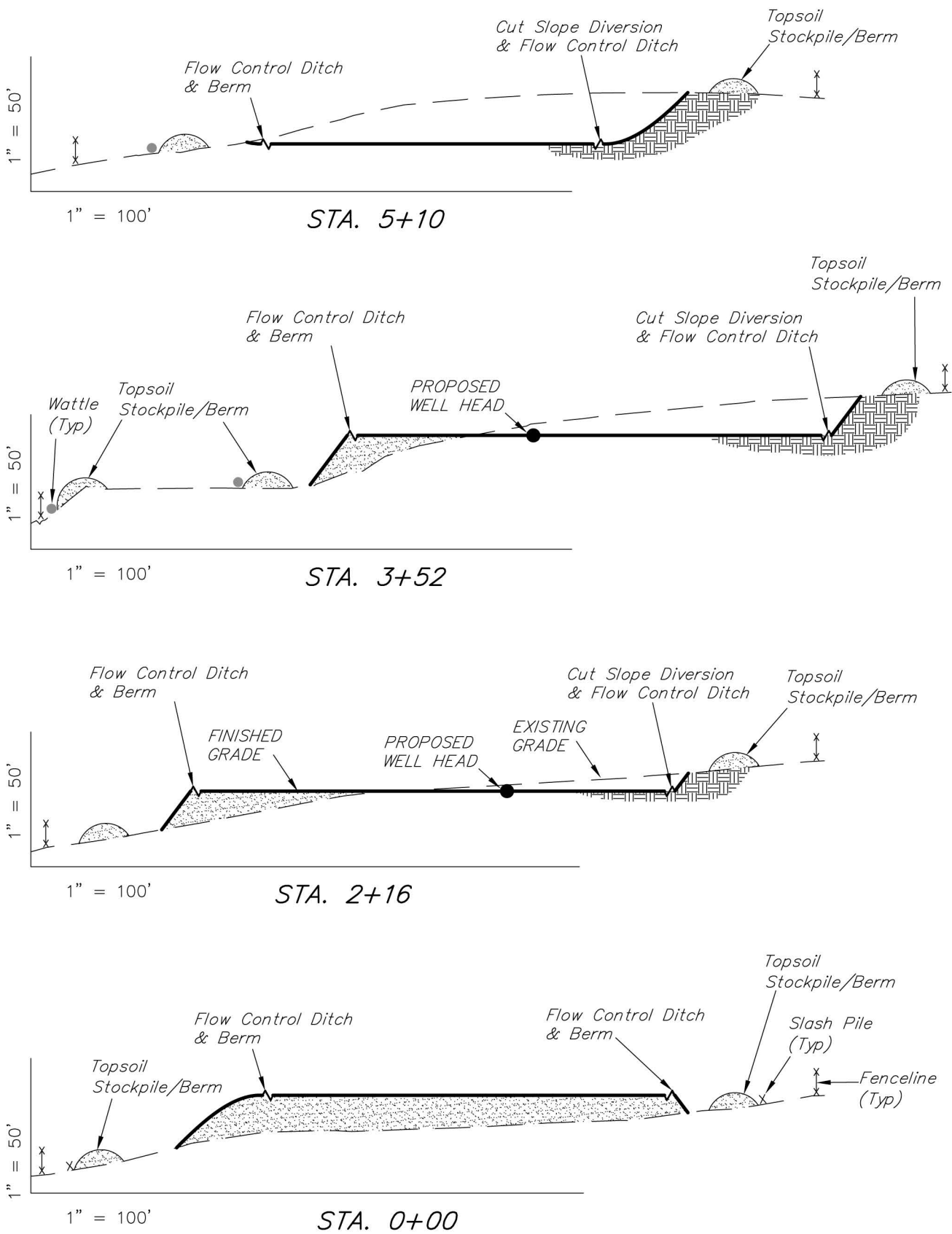
Tri State
Land Surveying, Inc.
180 NORTH VERNAL AVE. VERNAL, UTAH 84078

(435) 781-2501

SHEET
4
OF 8

ENCANA OIL & GAS (USA) INC

CROSS SECTIONS
WELL PAD (J6SEB)
Section 6, T8S, R92W, 6th P.M.



NOTE:
UNLESS OTHERWISE NOTED
CUT SLOPES ARE AT 1.5:1
FILL SLOPES ARE AT 1.5:1

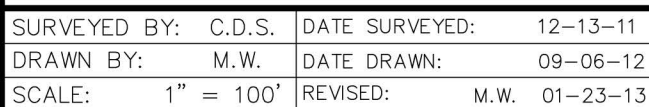
ESTIMATED EARTHWORK QUANTITIES (No Shrink or swell adjustments have been used) (Expressed in Cubic Yards)				
ITEM	CUT	FILL	6" TOPSOIL	EXCESS
PAD	27,030	27,030	Topsoil is not included in Pad Cut	0
PIT	N/A	N/A		N/A
TOTALS	27,030	27,030	3,820	0

SURVEYED BY: C.D.S.	DATE SURVEYED: 12-13-11
DRAWN BY: M.W.	DATE DRAWN: 09-06-12
SCALE: 1" = 100'	REVISED: M.W. 01-23-13

Tri State
Land Surveying, Inc.

(435) 781-2501
180 NORTH VERNAL AVE. VERNAL, UTAH 84078

TYPICAL RIG LAYOUT
WELL PAD (J6SEB)
Section 6, T8S, R92W, 6th P.M.



Tri State (435) 781-2501
Land Surveying, Inc.
180 NORTH VERNAL AVE. VERNAL, UTAH 84078

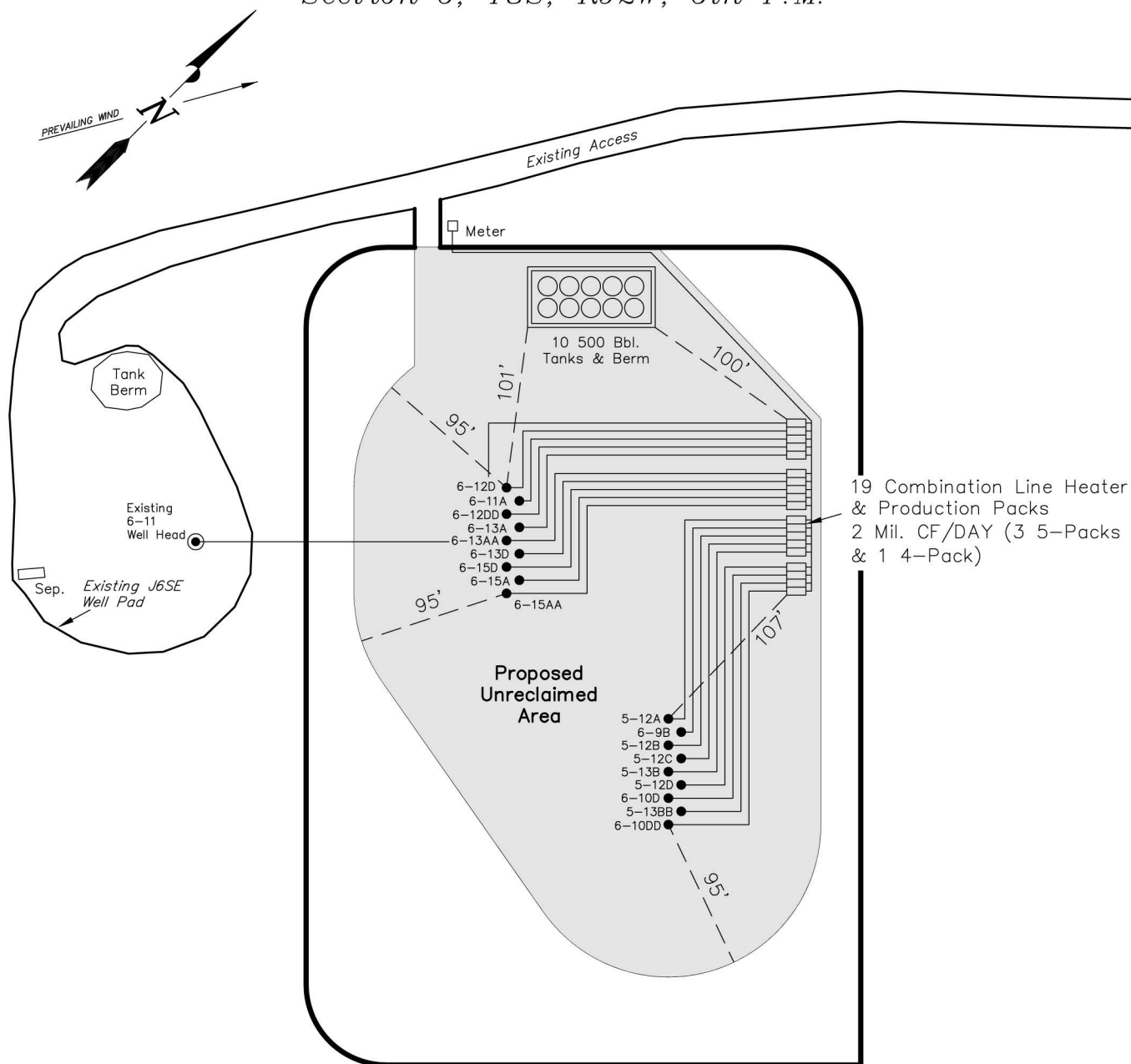
SHEET
6
OF 8

ENCANA OIL & GAS (USA) INC

PRODUCTION SCHEMATIC

WELL PAD (J6SEB)

Section 6, T8S, R92W, 6th P.M.



Notes:

1. Reclaimed area to include seeding of approved vegetation and sufficient storm water management system.
2. Reclaimed Pad to have storm water Management BMP's Per Encana Oil & Gas (USA) Inc. BMP Manual.
3. Actual Equipment Layout and Reclaimed Pad Surface Area May Change do to Production Requirements or Site Conditions.

DISTURBED AREA:

TOTAL DISTURBED AREA = 7.35 ACRES

TOTAL RECLAIMED AREA = 4.92 ACRES

UNRECLAIMED AREA = 2.43 ACRES

SURVEYED BY: C.D.S.	DATE SURVEYED: 12-13-11
DRAWN BY: M.W.	DATE DRAWN: 09-06-12
SCALE: 1" = 100'	REVISED: M.W. 01-23-13

Tri State
Land Surveying, Inc.
180 NORTH VERNAL AVE. VERNAL, UTAH 84078
(435) 781-2501

SHEET
7
OF 8

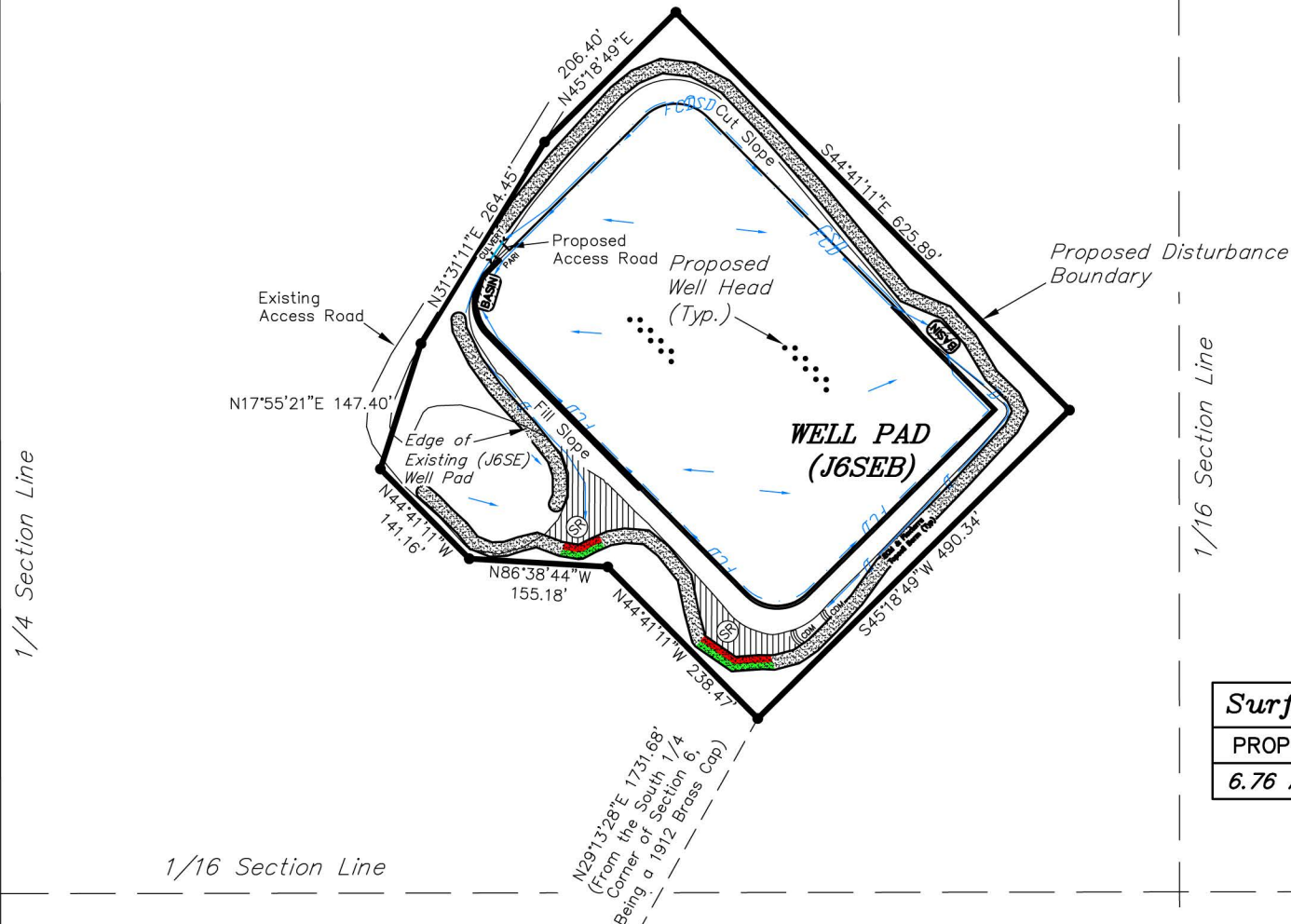
ENCANA OIL & GAS (USA) INC

SURFACE DISTURBANCE AREA

WELL PAD (J6SEB)

Section 6, T8S, R92W, 6th P.M.

Sec 6



Surface Disturbance Area		
PROPOSED	EXISTING	TOTAL
6.76 Acres	0.59 Acres	7.35 Acres

SURVEYED BY: C.D.S.	DATE SURVEYED: 12-13-11
DRAWN BY: M.W.	DATE DRAWN: 12-04-12
SCALE: 1" = 200'	REVISED: M.W. 01-23-13

Tri State (435) 781-2501
 Land Surveying, Inc.
 180 NORTH VERNAL AVE. VERNAL, UTAH 84078

SHEET
8
 OF 8