

# KERR-MCGEE OIL & GAS ONSHORE LP

Location: COLORADO Slot: SLOT#11 MORNING FRESH 3N-15HZ (456'FNL & 1851'FWL, SEC.22)  
Field: WELD COUNTY (KERR MCGEE) Well: MORNING FRESH 3N-15HZ  
Facility: SEC.22-T3N-R66W Wellbore: MORNING FRESH 3N-15HZ PWB

## Well Profile Data

Design Comment	MD (ft)	Inc (°)	Az (°)	TVD (ft)	Local N (ft)	Local E (ft)	DLS (°/100ft)	VS (ft)
Tie On	17.00	0.000	320.000	17.00	0.00	0.00	0.00	0.00
End of Tangent	1037.00	0.000	320.000	1037.00	0.00	0.00	0.00	0.00
End of Build	1284.50	4.950	320.000	1284.19	8.18	-6.87	2.00	8.58
End of Tangent	6634.87	4.950	320.000	6614.61	361.84	-303.62	0.00	379.16
End of 3D Arc (J)	7492.48	89.535	0.268	7149.00	929.04	-330.64	10.00	946.97
End of Tangent (J)	11805.59	89.535	0.268	7184.00	5241.97	-310.47	0.00	5251.16

## Location Information

Facility Name			Grid East (US ft)	Grid North (US ft)	Latitude	Longitude
SEC.22-T3N-R66W			320454.216	1321607.091	40°12'50.00"N	104°45'53.288"W
Box	Local N (ft)	Local E (ft)	Grid East (US ft)	Grid North (US ft)	Latitude	Longitude
SLOT#11 MORNING FRESH 3N-15HZ (456'FNL & 1851'FWL, SEC.22)	981.39	326.05	320460.131	1322591.085	40°12'50.702"N	104°45'53.098"W
Rig on SLOT#11 MORNING FRESH 3N-15HZ (456'FNL & 1851'FWL, SEC.22) (RKB) to Mud line (At Box: SLOT#11 MORNING FRESH 3N-15HZ (456'FNL & 1851'FWL, SEC.22))					4902ft	
Mean Sea Level to Mud line (At Box: SLOT#11 MORNING FRESH 3N-15HZ (456'FNL & 1851'FWL, SEC.22))					0ft	
Rig on SLOT#11 MORNING FRESH 3N-15HZ (456'FNL & 1851'FWL, SEC.22) (RKB) to Mean Sea Level					4902ft	

## Targets

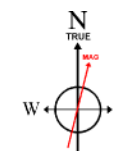
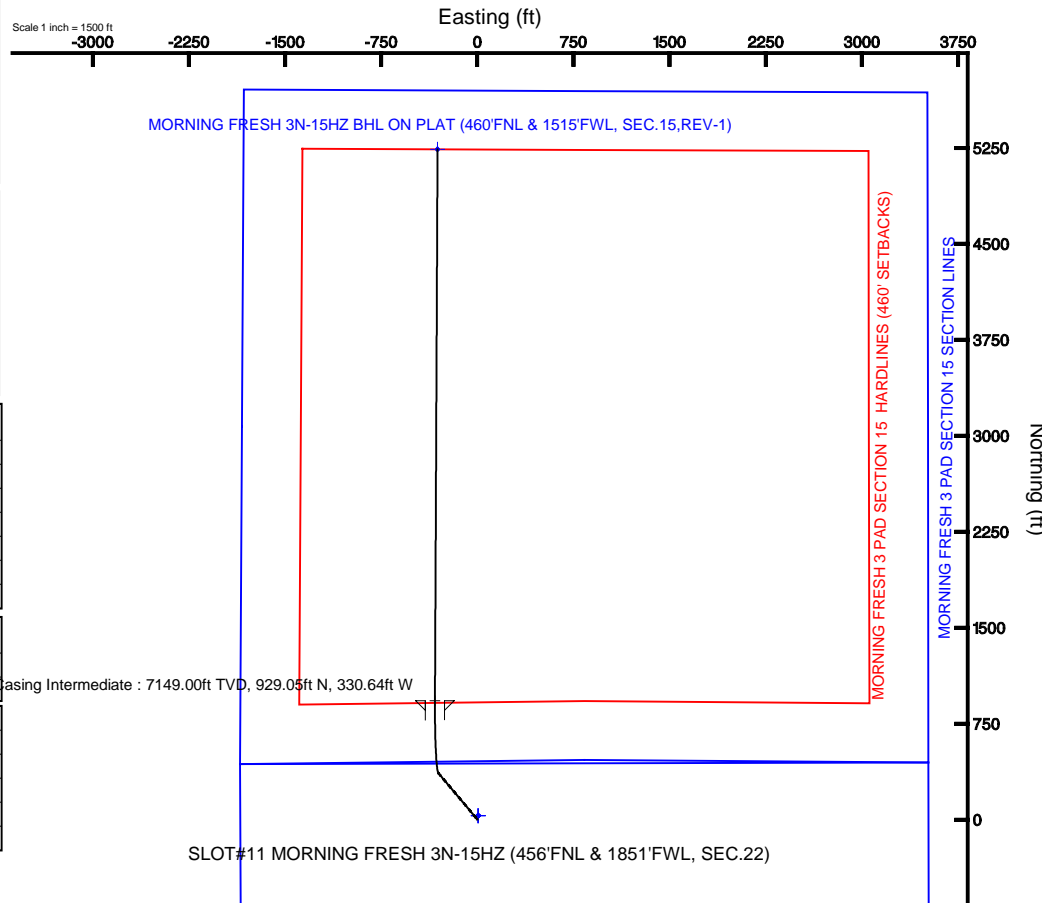
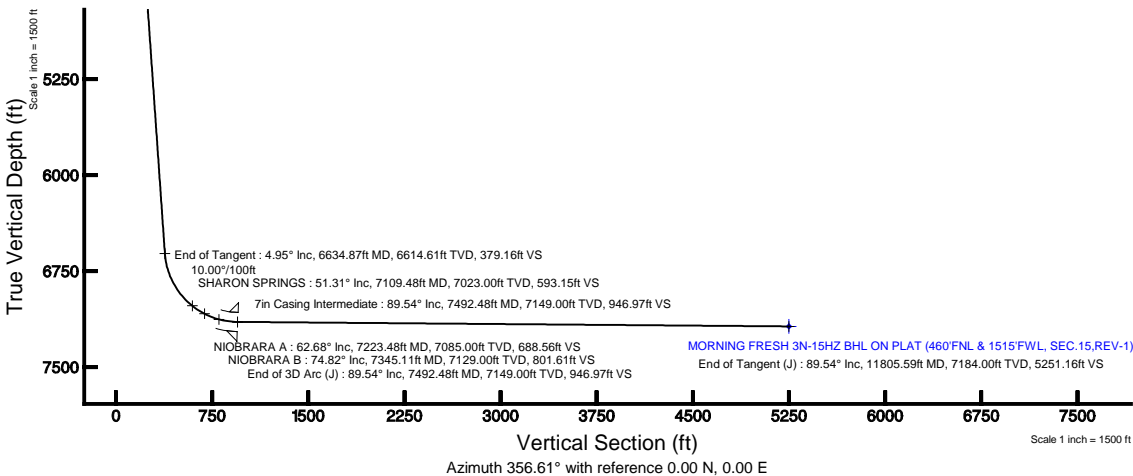
Name	MD (ft)	TVD (ft)	Local N (ft)	Local E (ft)	Grid East (US ft)	Grid North (US ft)	Latitude	Longitude
MORNING FRESH 3 PAD SECTION 15 SECTION LINES	1.00	28.84	8.98	3204867.87	1322619.98	40°12'59.987"N	104°45'53.098"W	
MORNING FRESH 3 PAD SECTION 22 SECTION LINES	1.00	28.84	8.98	3204867.87	1322619.98	40°12'59.987"N	104°45'53.098"W	
Roberts 32-22 Target	5988.00	-2114.63	-1790.45	3203088.31	1320481.81	40°12'38.805"N	104°46'22.176"W	
MORNING FRESH 3N-15HZ BHL ON PLAT (460'FNL & 1515'FWL, SEC.15,REV-1)	11805.59	7184.00	5241.97	-310.47	3204507.32	1327930.07	40°13'51.503"N	104°46'03.101"W
MORNING FRESH 3 PAD SECTION 15 HARDLINES (460' SETBACKS)	7385.00	26.84	8.98	3204867.87	1322619.98	40°12'59.987"N	104°45'53.098"W	
MORNING FRESH 3 PAD SECTION 22 HARDLINES (460' SETBACKS)	7385.00	26.84	8.98	3204867.87	1322619.98	40°12'59.987"N	104°45'53.098"W	

## Survey Program

Start MD (ft)	End MD (ft)	Tool	Model	Log Name/Comment	Wellbore
17.00	11805.59	NavitTrak	NavitTrak (Standard)		MORNING FRESH 3N-15HZ PWB

## Plot reference wellpath is MORNING FRESH 3N-15HZ (PERMIT) PWP

True vertical depths are referenced to Rig on SLOT#11 MORNING FRESH 3N-15HZ (456'FNL & 1851'FWL, SEC.22) (RKB)	Grid System: NAD83 / Lambert Colorado SP, Northern Zone (501), US feet
Measured depths are referenced to Rig on SLOT#11 MORNING FRESH 3N-15HZ (456'FNL & 1851'FWL, SEC.22) (RKB)	North Reference: True north
Rig on SLOT#11 MORNING FRESH 3N-15HZ (456'FNL & 1851'FWL, SEC.22) (RKB) to Mean Sea Level: 4902 feet	Scale: True distance
Mean Sea Level to Mud line (At Slot: SLOT#11 MORNING FRESH 3N-15HZ (456'FNL & 1851'FWL, SEC.22)): 0 feet	Depths are in feet
Coordinates are in feet referenced to Slot	Created by: cookdamm on 9/18/2012



BGGM (1945.0 to 2014.0) Dip: 66.84° Field: 52823.6 nT  
Magnetic North is 8.72 degrees East of True North (at 9/18/2012)

To correct azimuth from Magnetic to True add 8.72 degrees  
For example: If the Magnetic North Azimuth = 90 degs, then the True North Azimuth = 90 + 8.72 = 98.72



# Planned Wellpath Report

MORNING FRESH 3N-15HZ (PERMIT) PWP

Page 1 of 6



REFERENCE WELLPATH IDENTIFICATION			
Operator	KERR-MCGEE OIL & GAS ONSHORE LP	Slot	SLOT#11 MORNING FRESH 3N-15HZ (456'FNL & 1851'FWL, SEC.22)
Area	COLORADO	Well	MORNING FRESH 3N-15HZ
Field	WELD COUNTY (KERR MCGEE)	Wellbore	MORNING FRESH 3N-15HZ PWB
Facility	SEC.22-T3N-R66W		

REPORT SETUP INFORMATION			
Projection System	NAD83 / Lambert Colorado SP, Northern Zone (501), US feet	Software System	WellArchitect® 4.0.0
North Reference	True	User	Cookdannm
Scale	0.999957	Report Generated	9/18/2012 at 12:34:17 PM
Convergence at slot	0.47° East	Database/Source file	WA_ANADARKO/MORNING_FRESH_3N-15HZ_PWB.xml

WELLPATH LOCATION						
	Local coordinates		Grid coordinates		Geographic coordinates	
	North[ft]	East[ft]	Easting[US ft]	Northing[US ft]	Latitude	Longitude
Slot Location	981.39	325.05	3204861.13	1322591.09	40°12'59.702"N	104°45'59.098"W
Facility Reference Pt			3204544.22	1321607.09	40°12'50.004"N	104°46'03.288"W
Field Reference Pt			3197771.84	1268891.29	40°04'09.600"N	104°47'36.000"W

WELLPATH DATUM			
Calculation method	Minimum curvature	Rig on SLOT#11 MORNING FRESH 3N-15HZ (456'FNL & 1851'FWL, SEC.22) (RKB) to Facility Vertical Datum	
Horizontal Reference Pt	Slot	Rig on SLOT#11 MORNING FRESH 3N-15HZ (456'FNL & 1851'FWL, SEC.22) (RKB) to Mean Sea Level	
Vertical Reference Pt	Rig on SLOT#11 MORNING FRESH 3N-15HZ (456'FNL & 1851'FWL, SEC.22) (RKB)	Rig on SLOT#11 MORNING FRESH 3N-15HZ (456'FNL & 1851'FWL, SEC.22) (RKB) to Mud Line at Slot (SLOT#11)	
MD Reference Pt	Rig on SLOT#11 MORNING FRESH 3N-15HZ (456'FNL & 1851'FWL, SEC.22) (RKB)	Section Origin	
Field Vertical Reference	Mean Sea Level	Section Azimuth	

## REFERENCE WELLPATH IDENTIFICATION

Operator	KERR-MCGEE OIL & GAS ONSHORE LP	Slot	SLOT#11 MORNING FRESH 3N-15HZ (456'FNL & 1851'FWL, SEC.22)
Area	COLORADO	Well	MORNING FRESH 3N-15HZ
Field	WELD COUNTY (KERR MCGEE)	Wellbore	MORNING FRESH 3N-15HZ PWB
Facility	SEC.22-T3N-R66W		

## WELLPATH DATA (130 stations) † = interpolated/extrapolated station

MD [ft]	Inclination [°]	Azimuth [°]	TVD [ft]	Vert Sect [ft]	North [ft]	East [ft]	DLS [°/100ft]	Comments
0.00†	0.000	320.000	0.00	0.00	0.00	0.00	0.00	
17.00	0.000	320.000	17.00	0.00	0.00	0.00	0.00	Tie On
117.00†	0.000	320.000	117.00	0.00	0.00	0.00	0.00	
217.00†	0.000	320.000	217.00	0.00	0.00	0.00	0.00	
317.00†	0.000	320.000	317.00	0.00	0.00	0.00	0.00	
417.00†	0.000	320.000	417.00	0.00	0.00	0.00	0.00	
517.00†	0.000	320.000	517.00	0.00	0.00	0.00	0.00	
617.00†	0.000	320.000	617.00	0.00	0.00	0.00	0.00	
717.00†	0.000	320.000	717.00	0.00	0.00	0.00	0.00	
751.00†	0.000	320.000	751.00	0.00	0.00	0.00	0.00	FOX HILLS
817.00†	0.000	320.000	817.00	0.00	0.00	0.00	0.00	
917.00†	0.000	320.000	917.00	0.00	0.00	0.00	0.00	
1017.00†	0.000	320.000	1017.00	0.00	0.00	0.00	0.00	
1037.00	0.000	320.000	1037.00	0.00	0.00	0.00	0.00	End of Tangent
1117.00†	1.600	320.000	1116.99	0.90	0.86	-0.72	2.00	
1217.00†	3.600	320.000	1216.88	4.54	4.33	-3.63	2.00	
1284.50	4.950	320.000	1284.19	8.58	8.18	-6.87	2.00	End of Build
1317.00†	4.950	320.000	1316.57	10.83	10.33	-8.67	0.00	
1417.00†	4.950	320.000	1416.20	17.75	16.94	-14.22	0.00	
1517.00†	4.950	320.000	1515.83	24.68	23.55	-19.76	0.00	
1617.00†	4.950	320.000	1615.45	31.61	30.16	-25.31	0.00	
1717.00†	4.950	320.000	1715.08	38.53	36.77	-30.86	0.00	
1817.00†	4.950	320.000	1814.71	45.46	43.38	-36.40	0.00	
1917.00†	4.950	320.000	1914.33	52.39	49.99	-41.95	0.00	
2017.00†	4.950	320.000	2013.96	59.31	56.60	-47.50	0.00	
2117.00†	4.950	320.000	2113.59	66.24	63.21	-53.04	0.00	
2217.00†	4.950	320.000	2213.21	73.16	69.82	-58.59	0.00	
2317.00†	4.950	320.000	2312.84	80.09	76.43	-64.13	0.00	
2417.00†	4.950	320.000	2412.47	87.02	83.04	-69.68	0.00	
2517.00†	4.950	320.000	2512.10	93.94	89.65	-75.23	0.00	
2617.00†	4.950	320.000	2611.72	100.87	96.26	-80.77	0.00	
2717.00†	4.950	320.000	2711.35	107.80	102.87	-86.32	0.00	
2817.00†	4.950	320.000	2810.98	114.72	109.48	-91.87	0.00	
2917.00†	4.950	320.000	2910.60	121.65	116.09	-97.41	0.00	
3017.00†	4.950	320.000	3010.23	128.57	122.70	-102.96	0.00	
3117.00†	4.950	320.000	3109.86	135.50	129.31	-108.51	0.00	
3217.00†	4.950	320.000	3209.48	142.43	135.92	-114.05	0.00	
3317.00†	4.950	320.000	3309.11	149.35	142.53	-119.60	0.00	
3417.00†	4.950	320.000	3408.74	156.28	149.14	-125.14	0.00	
3517.00†	4.950	320.000	3508.37	163.21	155.75	-130.69	0.00	
3617.00†	4.950	320.000	3607.99	170.13	162.36	-136.24	0.00	
3717.00†	4.950	320.000	3707.62	177.06	168.97	-141.78	0.00	
3817.00†	4.950	320.000	3807.25	183.98	175.58	-147.33	0.00	
3917.00†	4.950	320.000	3906.87	190.91	182.19	-152.88	0.00	
3962.29†	4.950	320.000	3952.00	194.05	185.18	-155.39	0.00	PARKMAN

## REFERENCE WELLPATH IDENTIFICATION

Operator	KERR-MCGEE OIL & GAS ONSHORE LP	Slot	SLOT#11 MORNING FRESH 3N-15HZ (456'FNL & 1851'FWL, SEC.22)
Area	COLORADO	Well	MORNING FRESH 3N-15HZ
Field	WELD COUNTY (KERR MCGEE)	Wellbore	MORNING FRESH 3N-15HZ PWB
Facility	SEC.22-T3N-R66W		

## WELLPATH DATA (130 stations) † = interpolated/extrapolated station

MD [ft]	Inclination [°]	Azimuth [°]	TVD [ft]	Vert Sect [ft]	North [ft]	East [ft]	DLS [°/100ft]	Comments
4017.00†	4.950	320.000	4006.50	197.84	188.80	-158.42	0.00	
4117.00†	4.950	320.000	4106.13	204.76	195.41	-163.97	0.00	
4217.00†	4.950	320.000	4205.76	211.69	202.02	-169.52	0.00	
4317.00†	4.950	320.000	4305.38	218.62	208.63	-175.06	0.00	
4417.00†	4.950	320.000	4405.01	225.54	215.24	-180.61	0.00	
4457.14†	4.950	320.000	4445.00	228.32	217.89	-182.83	0.00	SUSSEX
4517.00†	4.950	320.000	4504.64	232.47	221.85	-186.15	0.00	
4617.00†	4.950	320.000	4604.26	239.40	228.46	-191.70	0.00	
4717.00†	4.950	320.000	4703.89	246.32	235.07	-197.25	0.00	
4817.00†	4.950	320.000	4803.52	253.25	241.68	-202.79	0.00	
4917.00†	4.950	320.000	4903.14	260.17	248.29	-208.34	0.00	
5017.00†	4.950	320.000	5002.77	267.10	254.90	-213.89	0.00	
5117.00†	4.950	320.000	5102.40	274.03	261.51	-219.43	0.00	
5217.00†	4.950	320.000	5202.03	280.95	268.12	-224.98	0.00	
5317.00†	4.950	320.000	5301.65	287.88	274.73	-230.53	0.00	
5417.00†	4.950	320.000	5401.28	294.81	281.34	-236.07	0.00	
5517.00†	4.950	320.000	5500.91	301.73	287.95	-241.62	0.00	
5617.00†	4.950	320.000	5600.53	308.66	294.56	-247.16	0.00	
5717.00†	4.950	320.000	5700.16	315.58	301.17	-252.71	0.00	
5817.00†	4.950	320.000	5799.79	322.51	307.78	-258.26	0.00	
5917.00†	4.950	320.000	5899.41	329.44	314.39	-263.80	0.00	
6017.00†	4.950	320.000	5999.04	336.36	321.00	-269.35	0.00	
6117.00†	4.950	320.000	6098.67	343.29	327.61	-274.90	0.00	
6217.00†	4.950	320.000	6198.30	350.22	334.22	-280.44	0.00	
6317.00†	4.950	320.000	6297.92	357.14	340.83	-285.99	0.00	
6417.00†	4.950	320.000	6397.55	364.07	347.44	-291.54	0.00	
6517.00†	4.950	320.000	6497.18	370.99	354.05	-297.08	0.00	
6617.00†	4.950	320.000	6596.80	377.92	360.66	-302.63	0.00	
6634.87	4.950	320.000	6614.61	379.16	361.84	-303.62	0.00	End of Tangent
6717.00†	12.402	345.537	6695.76	390.68	373.11	-308.11	10.00	
6817.00†	22.208	352.408	6791.13	420.14	402.32	-313.30	10.00	
6917.00†	32.130	355.177	6879.99	465.69	447.66	-318.04	10.00	
7017.00†	42.086	356.738	6959.64	525.93	507.77	-322.20	10.00	
7109.48†	51.306	357.723	7023.00	593.15	574.92	-325.40	10.00	SHARON SPRINGS
7117.00†	52.057	357.791	7027.67	599.05	580.82	-325.63	10.00	
7217.00†	62.034	358.590	7081.99	682.82	664.58	-328.25	10.00	
7223.48†	62.681	358.636	7085.00	688.56	670.32	-328.38	10.00	NIOBRARA A
7317.00†	72.016	359.252	7120.98	774.70	756.51	-329.96	10.00	
7345.11†	74.822	359.423	7129.00	801.61	783.45	-330.27	10.00	NIOBRARA B
7417.00†	81.999	359.843	7143.43	871.89	853.83	-330.72	10.00	
7492.48	89.535	0.268	7149.00	946.97	929.04	-330.64	10.00	End of 3D Arc (J)
7517.00†	89.535	0.268	7149.20	971.44	953.57	-330.53	0.00	
7617.00†	89.535	0.268	7150.01	1071.23	1053.56	-330.06	0.00	
7717.00†	89.535	0.268	7150.82	1171.03	1153.56	-329.59	0.00	
7817.00†	89.535	0.268	7151.63	1270.82	1253.55	-329.12	0.00	

## REFERENCE WELLPATH IDENTIFICATION

Operator	KERR-MCGEE OIL & GAS ONSHORE LP	Slot	SLOT#11 MORNING FRESH 3N-15HZ (456'FNL & 1851'FWL, SEC.22)
Area	COLORADO	Well	MORNING FRESH 3N-15HZ
Field	WELD COUNTY (KERR MCGEE)	Wellbore	MORNING FRESH 3N-15HZ PWB
Facility	SEC.22-T3N-R66W		

## WELLPATH DATA (130 stations) † = interpolated/extrapolated station

MD [ft]	Inclination [°]	Azimuth [°]	TVD [ft]	Vert Sect [ft]	North [ft]	East [ft]	DLS [°/100ft]	Comments
7917.00†	89.535	0.268	7152.45	1370.61	1353.55	-328.66	0.00	
8017.00†	89.535	0.268	7153.26	1470.41	1453.54	-328.19	0.00	
8117.00†	89.535	0.268	7154.07	1570.20	1553.54	-327.72	0.00	
8217.00†	89.535	0.268	7154.88	1669.99	1653.54	-327.25	0.00	
8317.00†	89.535	0.268	7155.69	1769.78	1753.53	-326.79	0.00	
8417.00†	89.535	0.268	7156.50	1869.58	1853.53	-326.32	0.00	
8517.00†	89.535	0.268	7157.31	1969.37	1953.52	-325.85	0.00	
8617.00†	89.535	0.268	7158.13	2069.16	2053.52	-325.38	0.00	
8717.00†	89.535	0.268	7158.94	2168.96	2153.51	-324.92	0.00	
8817.00†	89.535	0.268	7159.75	2268.75	2253.51	-324.45	0.00	
8917.00†	89.535	0.268	7160.56	2368.54	2353.51	-323.98	0.00	
9017.00†	89.535	0.268	7161.37	2468.34	2453.50	-323.51	0.00	
9117.00†	89.535	0.268	7162.18	2568.13	2553.50	-323.05	0.00	
9217.00†	89.535	0.268	7162.99	2667.92	2653.49	-322.58	0.00	
9317.00†	89.535	0.268	7163.81	2767.72	2753.49	-322.11	0.00	
9417.00†	89.535	0.268	7164.62	2867.51	2853.48	-321.64	0.00	
9517.00†	89.535	0.268	7165.43	2967.30	2953.48	-321.18	0.00	
9617.00†	89.535	0.268	7166.24	3067.09	3053.47	-320.71	0.00	
9717.00†	89.535	0.268	7167.05	3166.89	3153.47	-320.24	0.00	
9817.00†	89.535	0.268	7167.86	3266.68	3253.47	-319.77	0.00	
9917.00†	89.535	0.268	7168.67	3366.47	3353.46	-319.31	0.00	
10017.00†	89.535	0.268	7169.49	3466.27	3453.46	-318.84	0.00	
10117.00†	89.535	0.268	7170.30	3566.06	3553.45	-318.37	0.00	
10217.00†	89.535	0.268	7171.11	3665.85	3653.45	-317.90	0.00	
10317.00†	89.535	0.268	7171.92	3765.65	3753.44	-317.43	0.00	
10417.00†	89.535	0.268	7172.73	3865.44	3853.44	-316.97	0.00	
10517.00†	89.535	0.268	7173.54	3965.23	3953.43	-316.50	0.00	
10617.00†	89.535	0.268	7174.35	4065.02	4053.43	-316.03	0.00	
10717.00†	89.535	0.268	7175.17	4164.82	4153.43	-315.56	0.00	
10817.00†	89.535	0.268	7175.98	4264.61	4253.42	-315.10	0.00	
10917.00†	89.535	0.268	7176.79	4364.40	4353.42	-314.63	0.00	
11017.00†	89.535	0.268	7177.60	4464.20	4453.41	-314.16	0.00	
11117.00†	89.535	0.268	7178.41	4563.99	4553.41	-313.69	0.00	
11217.00†	89.535	0.268	7179.22	4663.78	4653.40	-313.23	0.00	
11317.00†	89.535	0.268	7180.04	4763.58	4753.40	-312.76	0.00	
11417.00†	89.535	0.268	7180.85	4863.37	4853.40	-312.29	0.00	
11517.00†	89.535	0.268	7181.66	4963.16	4953.39	-311.82	0.00	
11617.00†	89.535	0.268	7182.47	5062.96	5053.39	-311.36	0.00	
11717.00†	89.535	0.268	7183.28	5162.75	5153.38	-310.89	0.00	
11805.59	89.535	0.268	7184.00 <sup>1</sup>	5251.16	5241.97	-310.47	0.00	End of Tangent (J)



# Planned Wellpath Report

MORNING FRESH 3N-15HZ (PERMIT) PWP

Page 5 of 6



REFERENCE WELLPATH IDENTIFICATION			
Operator	KERR-MCGEE OIL & GAS ONSHORE LP	Slot	SLOT#11 MORNING FRESH 3N-15HZ (456'FNL & 1851'FWL, SEC.22)
Area	COLORADO	Well	MORNING FRESH 3N-15HZ
Field	WELD COUNTY (KERR MCGEE)	Wellbore	MORNING FRESH 3N-15HZ PWB
Facility	SEC.22-T3N-R66W		

HOLE & CASING SECTIONS - Ref Wellbore: MORNING FRESH 3N-15HZ PWB    Ref Wellpath: MORNING FRESH 3N-15HZ (PERMIT) PWP									
String/Diameter	Start MD [ft]	End MD [ft]	Interval [ft]	Start TVD [ft]	End TVD [ft]	Start N/S [ft]	Start E/W [ft]	End N/S [ft]	End E/W [ft]
9.625in Open Hole	17.00	937.00	920.00	17.00	937.00	0.00	0.00	0.00	0.00
7in Casing Intermediate	17.00	7492.48	7475.48	17.00	7149.00	0.00	0.00	929.05	-330.64

TARGETS									
Name	MD [ft]	TVD [ft]	North [ft]	East [ft]	Grid East [US ft]	Grid North [US ft]	Latitude	Longitude	Shape
MORNING FRESH 3 PAD SECTION 15 SECTION LINES		1.00	28.84	6.98	3204867.87	1322619.98	40°12'59.987"N	104°45'59.008"W	polygon
MORNING FRESH 3 PAD SECTION 22 SECTION LINES		1.00	28.84	6.98	3204867.87	1322619.98	40°12'59.987"N	104°45'59.008"W	polygon
Roberts 32-22 Target		5988.00	-2114.63	-1790.45	3203088.31	1320461.81	40°12'38.805"N	104°46'22.176"W	circle
1) MORNING FRESH 3N-15HZ BHL ON PLAT (460'FNL & 1515'FWL, SEC.15,REV-1)	11805.59	7184.00	5241.97	-310.47	3204507.32	1327830.07	40°13'51.503"N	104°46'03.101"W	point
MORNING FRESH 3 PAD SECTION 15 HARDLINES (460' SETBACKS)		7385.00	28.84	6.98	3204867.87	1322619.98	40°12'59.987"N	104°45'59.008"W	polygon
MORNING FRESH 3 PAD SECTION 22 HARDLINES (460' SETBACKS)		7385.00	28.84	6.98	3204867.87	1322619.98	40°12'59.987"N	104°45'59.008"W	polygon

SURVEY PROGRAM - Ref Wellbore: MORNING FRESH 3N-15HZ PWB    Ref Wellpath: MORNING FRESH 3N-15HZ (PERMIT) PWP				
Start MD [ft]	End MD [ft]	Positional Uncertainty Model	Log Name/Comment	Wellbore
17.00	11805.59	NaviTrak (Standard)		MORNING FRESH 3N-15HZ PWB



**Planned Wellpath Report**  
**MORNING FRESH 3N-15HZ (PERMIT) PWP**  
Page 6 of 6



REFERENCE WELLPATH IDENTIFICATION			
Operator	KERR-MCGEE OIL & GAS ONSHORE LP	Slot	SLOT#11 MORNING FRESH 3N-15HZ (456'FNL & 1851'FWL, SEC.22)
Area	COLORADO	Well	MORNING FRESH 3N-15HZ
Field	WELD COUNTY (KERR MCGEE)	Wellbore	MORNING FRESH 3N-15HZ PWB
Facility	SEC.22-T3N-R66W		

WELLPATH COMMENTS					
MD [ft]	Inclination [°]	Azimuth [°]	TVD [ft]	Comment	
751.00	0.000	320.000	751.00	FOX HILLS	
3962.29	4.950	320.000	3952.00	PARKMAN	
4457.14	4.950	320.000	4445.00	SUSSEX	
7109.48	51.306	357.723	7023.00	SHARON SPRINGS	
7223.48	62.681	358.636	7085.00	NIOBRARA A	
7345.11	74.822	359.423	7129.00	NIOBRARA B	