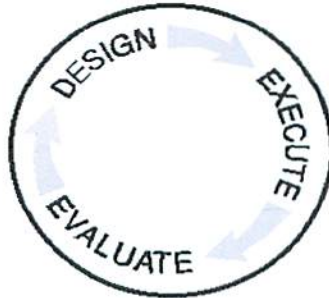


Schlumberger



DATE : September 25, 2012
SERVICE TYPE : 8 5/8 Surface
CLIENT : Knighthawk
TREATMENT # : C610-00742
WELL : Knoss 6-21
RIG : Spud Rig
LOCATION :
COMPANY MAN :

PREPARED BY : Jordan Moreland
TITLE : Field Supervisor
CELL # : 970-261-5749
DISTRICT : Grand Junction
SALES CONTACT : Kent Donner
PHONE # : 970-314-3470

Invoice Mailing Address: NIGHTHAWK PRODUCTION LLC 1805 SHEA CENTER DRIVE, SUITE 290 HIGHLANDS RANCH CO 80129 USA		Left District	Date: 25-Sep-2012	Time: 4:00 AM
		Arrive Location	Date: 25-Sep-2012	Time: 2:00 PM
		Start Job	Date: 25-Sep-2012	Time: 4:00 PM
		Complete Job	Date: 25-Sep-2012	Time: 5:00 PM
		Leave Location	Date: 25-Sep-2012	Time: 6:00 PM
		Arrived District	Date: 26-Sep-2012	Time: 4:00 AM
Service Description: Cementing Primary, Primary Surface				
Customer PO	Contract	Well Name & Number KNOSS 6-21		Field WILDCAT
AFE	Cust Ref	County/Parish/Block/Borough Lincoln		State/Province CO
Customer or Authorized Representative Jim Weer		SLB Location Grand Junction, CO		Legal Location
API/UWI 05073064800000	Pricebook ARDX / WSV_GEOREF_USL_2009_USD_v1			Rig SPUD RIG
Service Instructions: Cement 8 5/8" Surface Casing: 20bbbls Fresh Water Spacer. 130sks 14.0# Class G Cement. Displace with Water.				

THE ESTIMATED CHARGES AND DATA SHOWN BELOW ARE SUBJECT TO CORRECTION BY SCHLUMBERGER

Item	Description	Qty	UOM	Price	Disc	Amount
Products						
D029	Cellophane Flakes	25	LB	3.97	30.00%	69.47
D046	Antifoam Agent, All Purpose	24	LB	4.75	30.00%	79.80
D079	Chemical Extender	122	LB	2.55	30.00%	217.77
D907	Cement, Class G	130.69	CF	22.55	30.00%	2,062.94
Products Subtotal:						3,471.41
Discount:						1,041.43
Products Total:						2,429.98
Services						
48019000	Bulk Unit, Cement Add Hr	4	HR	107.50	30.00%	301.00
48601000	Cement Plug Container	1	JOB	520.00	30.00%	364.00
49100000	Cement Blending Charge	132.4	CF	2.27	30.00%	210.39
49102000	Transportation, Cement Ton-mile	810	MI	2.02	30.00%	1,145.34
59200002	Transportation, Mileage Heavy Vehicles	260	MI	5.52	30.00%	1,004.64
59200005	Transportation, Mileage Light Vehicles	260	MI	3.24	30.00%	589.68
59697004	CemCAT Monitoring System	1	JOB	880.00	30.00%	616.00
102871020	Pump, Casing Cement 0-2000 ft	1	EA	2,240.00	30.00%	1,568.00
102946000	Fuel Surcharge (non-discounted)	2	EA	450.00		900.00
107264001	Regulatory Conformance Charge	2	EA	341.00		682.00
Services Subtotal:						9,866.35
Discount:						2,485.30
Services Total:						7,381.05

Total (Before Discount):	13,337.76		
Discount:	3,526.73		
Special Discount:	0.00	Estimated Discounted Total (USD):	9,811.03

Cust Comments:

CustComment

SLB Comments:

Comments

NO FIELD EMPLOYEE OF SCHLUMBERGER IS AUTHORIZED OR EMPOWERED TO ALTER THESE GENERAL TERMS AND CONDITIONS.

Service Contract Receipt

SCHLUMBERGER TECHNOLOGY CORPORATION

Service Contract Number
C610-00742

Invoice Mailing Address: NIGHTHAWK PRODUCTION LLC 1805 SHEA CENTER DRIVE, SUITE 290 HIGHLANDS RANCH CO 80129 USA		Left District	Date: 25-Sep-2012	Time: 4:00 AM
		Arrive Location	Date: 25-Sep-2012	Time: 2:00 PM
		Start Job	Date: 25-Sep-2012	Time: 4:00 PM
		Complete Job	Date: 25-Sep-2012	Time: 5:00 PM
		Leave Location	Date: 25-Sep-2012	Time: 6:00 PM
		Arrived District	Date: 26-Sep-2012	Time: 4:00 AM
		Service Description: Cementing Primary, Primary Surface		
Customer PO	Contract	Well Name & Number KNOSS 6-21	Field WILDCAT	
AFE	Cust Ref	County/Parish/Block/Borough Lincoln	State/Province CO	
Customer or Authorized Representative Jim Veer		SLB Location Grand Junction, CO	Legal Location	
API/JWI 05073064800000	Pricebook ARDX / WSV_GEOREF_USL_2009_USD_v1		Rig SPUD RIG	
Service Instructions: Cement 8 5/8" Surface Casing: 20bbbls Fresh Water Spacer. 130sks 14.0# Class G Cement. Displace with Water.				

Estimated Discounted Total (USD): 9,811.03

THE ESTIMATED CHARGES AND DATA SHOWN ABOVE ARE SUBJECT TO CORRECTION BY SCHLUMBERGER.

THE SERVICES, EQUIPMENT, MATERIALS AND/OR PRODUCTS PROVIDED BY THIS SERVICE CONTRACT RECEIPT HAVE BEEN PERFORMED OR RECEIVED AS SET FORTH ABOVE.

Signature of Customer or Authorized Representative:

Signature of Schlumberger Representative:

Validity unknown

Validity unknown

Signed by Jim Veer
9/25/2012
17:28:36

Signed by Jordan Moreland
9/25/2012
17:28:36

Jim Veer

Date

Jordan Moreland

Date

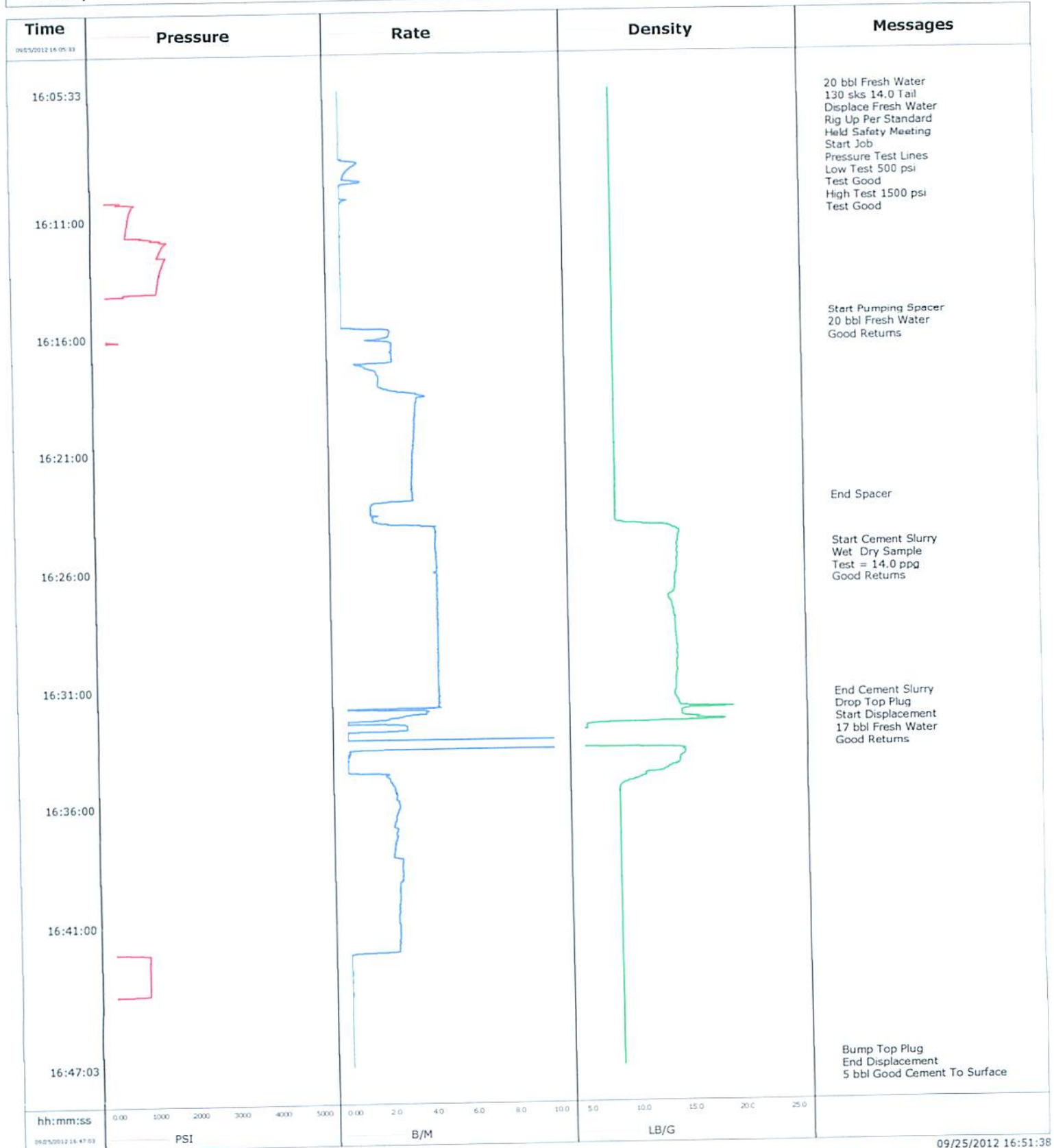
Date Printed: 25-Sep-2012 4:57 PM

Page 2 of 2

This document is Confidential and intended for authorized users only

NO FIELD EMPLOYEE OF SCHLUMBERGER IS AUTHORIZED OR EMPOWERED TO ALTER THESE GENERAL TERMS AND CONDITIONS.

Well	Knoss 6-21	Client	Knight Hawk
Field	Wildcat	SIR No.	
Engineer	Jordan Moreland/ Travis Willardson (pumper)	Job Type	8 5/8 Surface
Country	United States	Job Date	09-25-2012

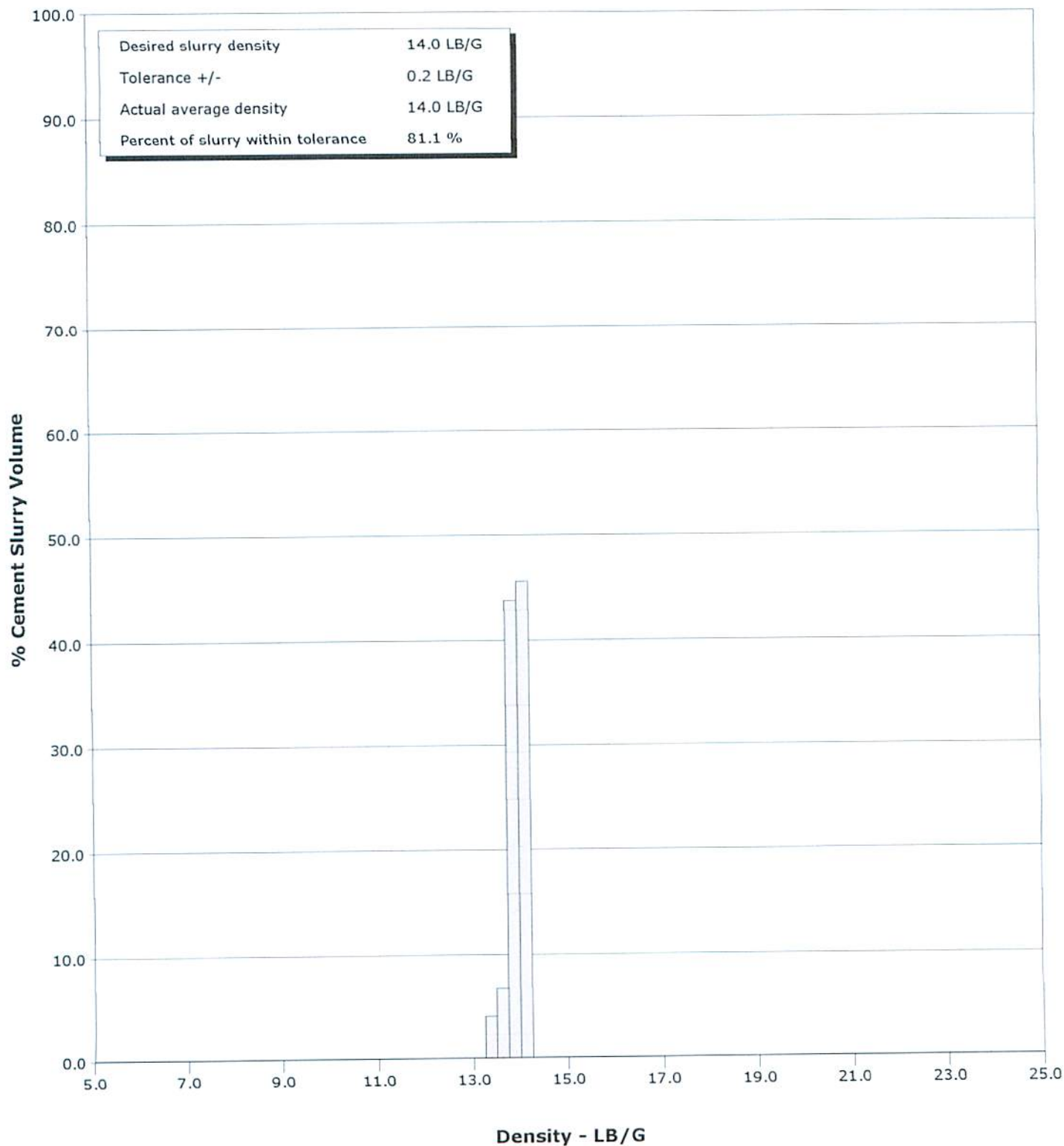


Schlumberger Cementing Qa/Qc Density Report

Well Knoss 6-21
Field Wildcat
Engineer Jordan Moreland/ Travis Willardson (pumper)
Country United States

Client Knight Hawk
SIR No.
Job Type 8 5/8 Surface
Job Date 09-25-2012

Cement Slurry - 09/25/2012 16:24:58 to 09/25/2012 16:31:22



Customer Knight Hawk				Job Number C610-00742			
Well Knoss 6-21		Location (legal)		Schlumberger Location GCO		Job Start Sep/25/2012	
Field Wildcat		Formation Name/Type		Deviation		Well TVD	
County Limon		State/Province Colorado		Bit Size 12.3 in		Well MD	
Well Master		API/UWI		BHST 83 degF		BHCT 83 degF	
Rig Name Spud Rig		Drilled For Oil		Service Via Land		Casing/Liner	
Offshore Zone		Well Class New		Well Type Exploration		Pore Press. Gradient	
Drilling Fluid Type		Max. Density		Plastic Viscosity		Tubing/Drill Pipe	
Service Line Cementing		Job Type 8 5/8 Surface		Depth, ft		Size, in	
Max. Allowed Tub. Press 1500 psi		Max. Allowed Ann. Press		WH Connection Single Cement head		Weight, lb/ft	
Service Instructions Rate And Density Checked 20 bbl Water 130 sks 14.0 Tail Displace Fresh Water						Grade	
						Thread	
						Treat Down Casing	
						Displacement 17.0 bbl	
						Packer Type	
						Packer Depth	
						Tubing Vol.	
						Casing Vol. 18.0 bbl	
						Annular Vol. 23.0 bbl	
						Openhole Vol. 42.0 bbl	
Casing/Tubing Secured <input checked="" type="checkbox"/>		1 Hole Vol. Circulated prior to Cement <input checked="" type="checkbox"/>		Casing Tools		Squeeze Job	
Lift Pressure 127 psi		Pipe Rotated <input type="checkbox"/>		Pipe Reciprocated <input type="checkbox"/>		Shoe Type Guide	
Pipe Rotated		Pipe Reciprocated		Shoe Depth 309.0 ft		Squeeze Type	
No. Centralizers		Top Plugs 1		Bottom Plugs		Tool Type	
Cement Head Type Single		Stage Tool Type		Stage Tool Depth		Tool Depth	
Job Scheduled For Sep/25/2012		Arrived on Location Sep/25/2012		Leave Location Sep/25/2012		Tail Pipe Size	
						Tail Pipe Depth	
						Collar Type Other	
						Collar Depth 265.0 ft	
						Sqz. Total Vol.	
Date	Time 24-hr clock	Treating Pressure PSI	Flow Rate B/M	Density LB/G	Volume BBL	Message	
09/25/2012	15:39:23					Started Acquisition	
09/25/2012	16:05:33					20 bbl Fresh Water	
09/25/2012	16:05:33					130 sks 14.0 Tail	
09/25/2012	16:05:33					Displace Fresh Water	
09/25/2012	16:05:33					Rig Up Per Standard	
09/25/2012	16:05:33					Held Safety Meeting	
09/25/2012	16:05:33	-144	0.0	8.34	0.0		
09/25/2012	16:05:35					Start Job	
09/25/2012	16:05:35	-144	0.0	8.34	0.0		
09/25/2012	16:05:37					Pressure Test Lines	
09/25/2012	16:05:37	-144	0.0	8.34	0.0		
09/25/2012	16:05:38					Low Test 500 psi	
09/25/2012	16:05:38					Test Good	
09/25/2012	16:05:38	-144	0.0	8.34	0.0		
09/25/2012	16:05:39					High Test 1500 psi	
09/25/2012	16:05:39					Test Good	
09/25/2012	16:05:39	-144	0.0	8.34	0.0		
09/25/2012	16:07:23	-147	0.0	8.34	0.0		
09/25/2012	16:09:23	-139	1.0	8.34	0.5		
09/25/2012	16:11:23	530	0.0	8.34	0.6		
09/25/2012	16:13:23	1310	0.0	8.34	0.6		

Well			Field	Job Start		Customer	Job Number
Knoss 6-21			Wildcat	Sep/25/2012		K. lawk	C610-00742
Date	Time 24-hr clock	Treating Pressure PSI	Flow Rate B/M	Density LB/G	Volume BBL	Message	
09/25/2012	16:15:11	-142	0.0	8.34	0.7		
09/25/2012	16:15:13					20 bbl Fresh Water	
09/25/2012	16:15:13					Good Returns	
09/25/2012	16:15:13	-141	0.0	8.34	0.7		
09/25/2012	16:15:23	-138	0.0	8.34	0.7		
09/25/2012	16:17:23	-116	1.1	8.34	4.3		
09/25/2012	16:19:23	-93	3.5	8.34	9.6		
09/25/2012	16:21:23	-92	3.3	8.34	16.4		
09/25/2012	16:23:03					End Spacer	
09/25/2012	16:23:03	-106	2.7	8.34	21.9		
09/25/2012	16:23:23	-111	1.3	8.34	22.4		
09/25/2012	16:24:58					Start Cement Slurry	
09/25/2012	16:24:58	-84	4.4	14.15	27.4		
09/25/2012	16:24:59					Wet Dry Sample	
09/25/2012	16:24:59					Test = 14.0 ppg	
09/25/2012	16:24:59	-86	4.4	14.15	27.4		
09/25/2012	16:25:00					Good Returns	
09/25/2012	16:25:00	-86	4.4	14.16	27.5		
09/25/2012	16:25:23	-87	4.4	14.19	29.2		
09/25/2012	16:27:23	-92	4.5	13.56	38.1		
09/25/2012	16:29:23	-92	4.4	14.07	47.0		
09/25/2012	16:31:22					End Cement Slurry	
09/25/2012	16:31:22	-96	4.5	13.80	55.8		
09/25/2012	16:31:23	-94	4.5	13.80	55.9		
09/25/2012	16:31:31					Drop Top Plug	
09/25/2012	16:31:31					Start Displacement	
09/25/2012	16:31:31	-107	4.5	14.02	56.5		
09/25/2012	16:31:32					17 bbl Fresh Water	
09/25/2012	16:31:32	-107	4.5	14.06	56.5		
09/25/2012	16:31:33					Good Returns	
09/25/2012	16:31:33	-107	4.5	14.06	56.6		
09/25/2012	16:33:23	-119	25.0	0.00	65.4		
09/25/2012	16:35:23	-137	2.3	8.35	71.1		
09/25/2012	16:37:23	-119	2.3	8.34	75.8		
09/25/2012	16:39:23	-94	2.4	8.35	80.6		
09/25/2012	16:41:23	-64	2.4	8.34	85.4		
09/25/2012	16:43:23	819	0.0	8.34	87.3		
09/25/2012	16:45:23	-144	0.0	8.34	87.4		
09/25/2012	16:46:41					Bump Top Plug	
09/25/2012	16:46:41	-144	0.0	8.34	87.4		
09/25/2012	16:46:42					End Displacement	
09/25/2012	16:46:42	-144	0.0	8.34	87.4		
09/25/2012	16:46:45					5 bbl Good Cement To Surface	
09/25/2012	16:46:45					Bleed Off Floats Held	
09/25/2012	16:46:45	-145	0.0	8.34	87.4		
09/25/2012	16:46:46					Rig Down	
09/25/2012	16:46:46	-144	0.0	8.34	87.4		

Well Kross 6-21	Field Wildcat	Job Start Sep/25/2012	Customer Krawk	Job Number C610-00742
--------------------	------------------	--------------------------	-------------------	--------------------------

Post Job Summary

Average Pump Rates, bbl/min				Volume of Fluid Injected, bbl			
Slurry 2.2	N2	Mud 0.0	Maximum Rate 25.0	Total Slurry 87.4	Mud 0.0	Spacer 21.9	N2
Treating Pressure Summary, psi				Breakdown Fluid			
Maximum 1516	Final -145	Average 932	Bump Plug to	Breakdown	Type	Volume	Density
Avg. N2 Percent	Designed Slurry Volume	Displacement 31.0 bbl	Mix Water Temp 68 degF	Cement Circulated to Surface? <input checked="" type="checkbox"/>	Volume		
				Washed Thru Perfs <input type="checkbox"/>	To		
Customer or Authorized Representative Jim Weer		Schlumberger Supervisor Jordan Moreland/ Travis Willardson (pumper)		Circulation Lost <input type="checkbox"/>	Job Completed <input checked="" type="checkbox"/>		
				-	-		