

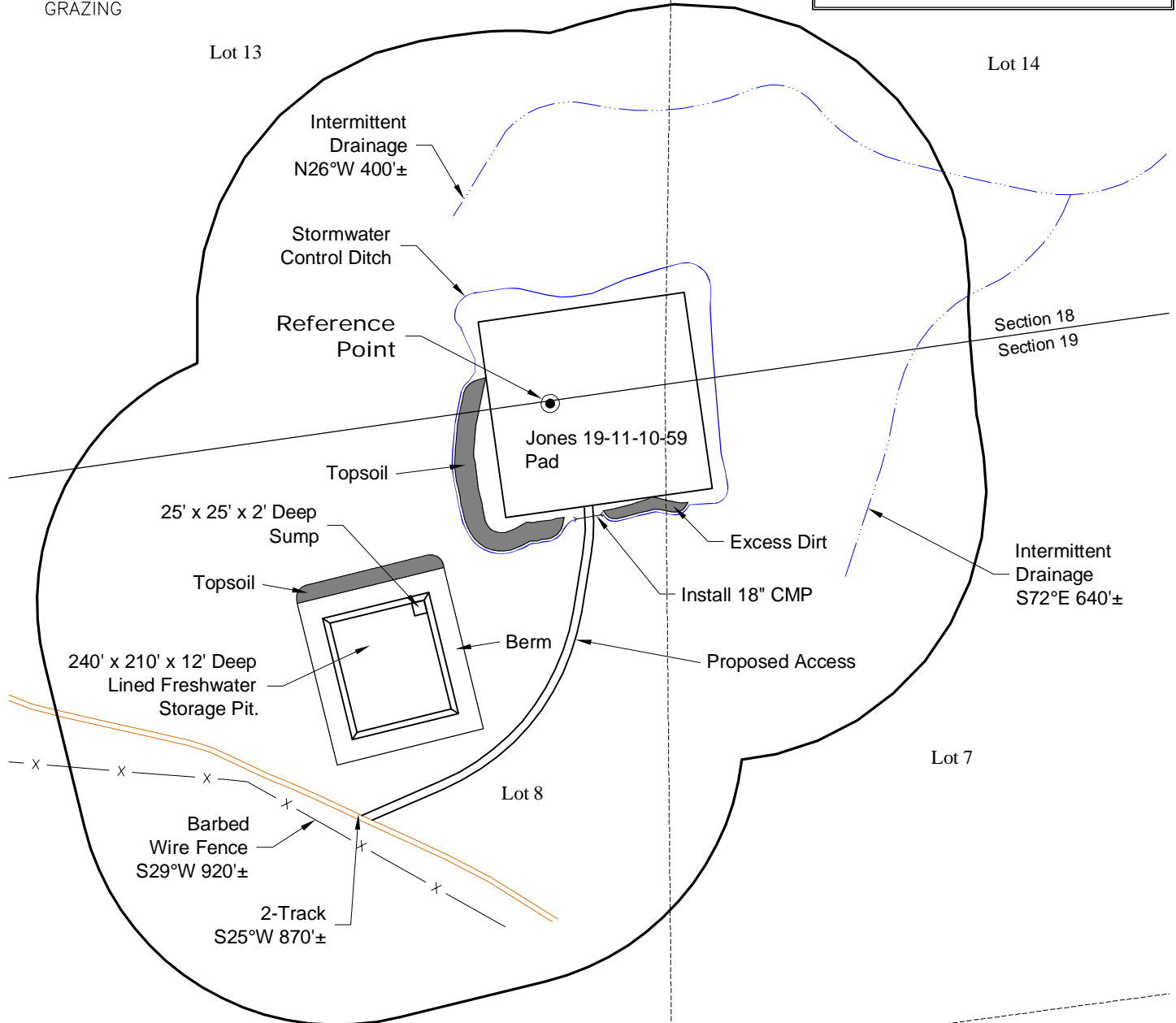
LOCATION DRAWING

REFERENCE POINT

LATITUDE:	40.82940
LONGITUDE:	-104.02647
FOOTAGE:	5 FNL 1051 FWL
GROUND ELEVATION:	5397.9
PDOP:	2.3 DATE: 8/3/2012
INSTRUMENT OPERATOR:	MARC WOODARD

VEGETATION:
DISTURBED GRASSLAND

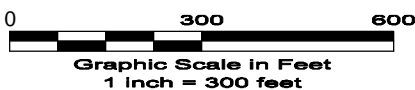
SURFACE USE:
GRAZING



DISTURBANCE ACREAGE:
5.6± DRILLING OPERATIONS
2.3± FRESHWATER STORAGE PIT
1.0± INTERIM RECLAIM

NOTE:
ALL PRODUCTION FACILITIES WILL BE ON PAD.

8/9/12



LAND SURVEYING AND MAPPING
LAFAYETTE - WINTER PARK
Ph 303 666 0379 Fx 303 665 6320

CARRIZO OIL & GAS, INC
JONES 19-11-10-59 PAD

LOT 8 SECTION 19 T10N R59W
6th PM WELD COUNTY COLORADO