

Project: Wattenberg Field
Site: AA (Sec. 18-T6N-R62W) Weld County, CO
Well: Wells Ranch USX AA13-65-1HN
Wellbore: Original Drilling
Design: APD - Rev 0

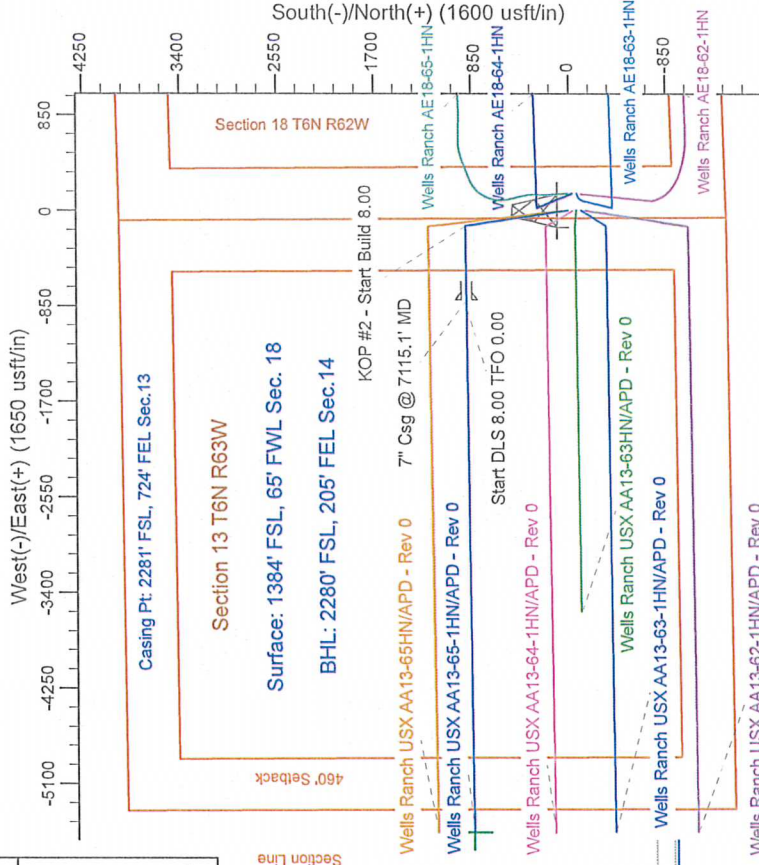
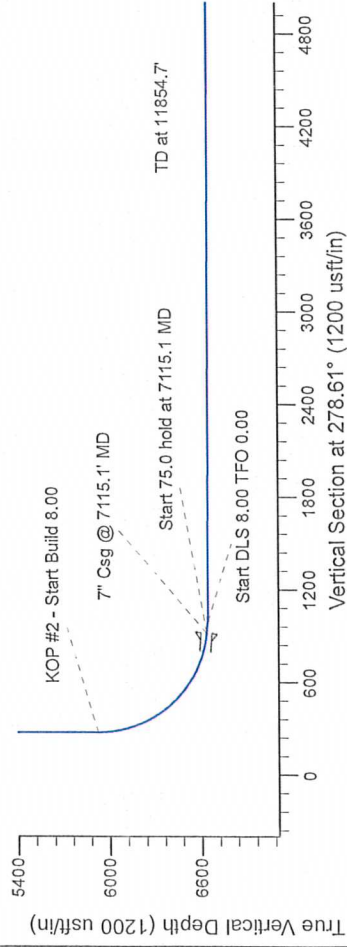
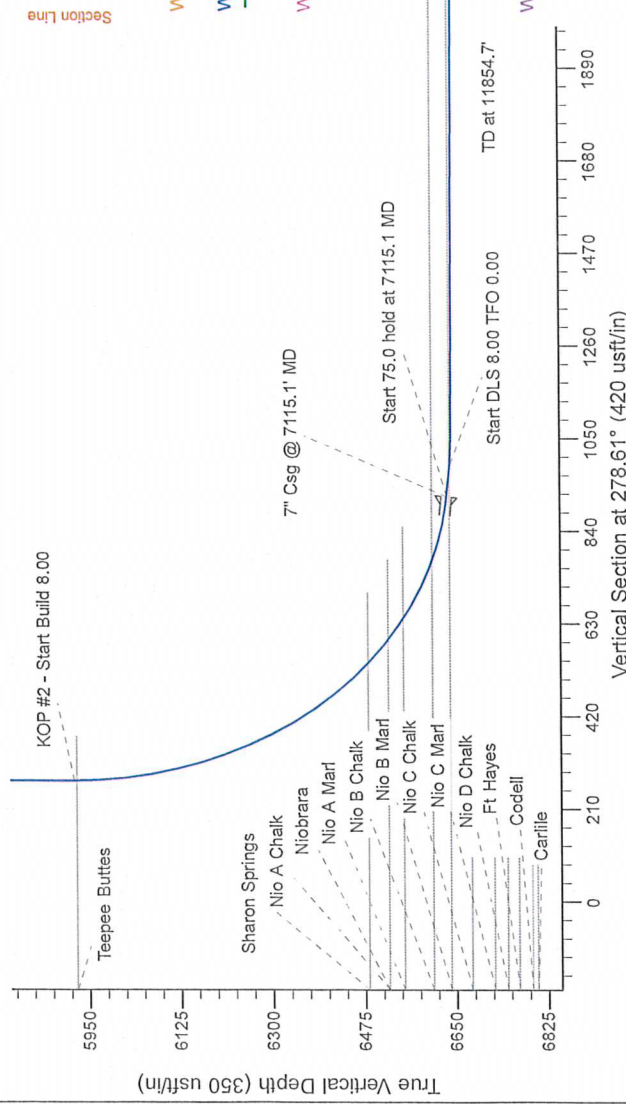
Northern Region Drilling

Geodetic System: US State Plane 1983
Datum: North American Datum 1983
Ellipsoid: GRS 1980
Zone: Colorado Northern Zone
System Datum: Mean Sea Level

SECTION DETAILS

Sec	MD	Inc	Azi	TVD	+N/S	+E/W	Dleg	TFace	VSecl	Target
1	0.0	0.00	0.00	0.0	0.0	0.0	0.00	0.00	0.0	
2	1500.0	0.00	0.00	1500.0	0.0	0.0	0.00	0.00	0.0	
3	2200.0	18.00	351.12	2208.2	110.8	-17.3	2.50	351.12	33.7	
4	4428.7	18.00	351.12	4308.8	785.2	-122.7	0.00	0.00	238.8	
5	5148.7	0.00	0.00	5017.0	896.0	-140.0	2.50	180.00	272.5	
6	6052.6	0.00	0.00	5920.9	896.0	-140.0	0.00	0.00	272.5	
7	7115.1	85.00	269.38	6634.4	888.9	-793.7	8.00	269.38	917.9	
8	7190.1	85.00	269.38	6640.9	888.1	-868.4	0.00	0.00	991.6	
9	7250.1	85.00	269.38	6643.7	887.5	-828.4	8.00	0.00	1050.8	
10	11854.7	85.80	269.38	6659.5	837.7	-5532.7	0.00	0.00	5596.8	

Wells Ranch USX AA13-65-1HN BHL 2280'FSL, 205'FEL



T G M

Azimuths to Grid North
True North: -0.73°
Magnetic North: 7.69°

Magnetic Field
Strength: 53085.7snT
Dip Angle: 67.14°
Date: 11/29/2012
Model: IGRF200510

WELL DETAILS: Wells Ranch USX AA13-65-1HN		
North	Ground Level	Longitude
1420803.65	4831.0	-104.375170
East	Latitude	
3312884.58	40.483060	
Plan: APD - Rev 0 (Wells Ranch USX AA13-65-1HN) Original Drilling		
Created By: Carrie Willers		Date: 16:30, December 17 2012
Checked:		Date:
Reviewed:		Date:
Approved:		Date: