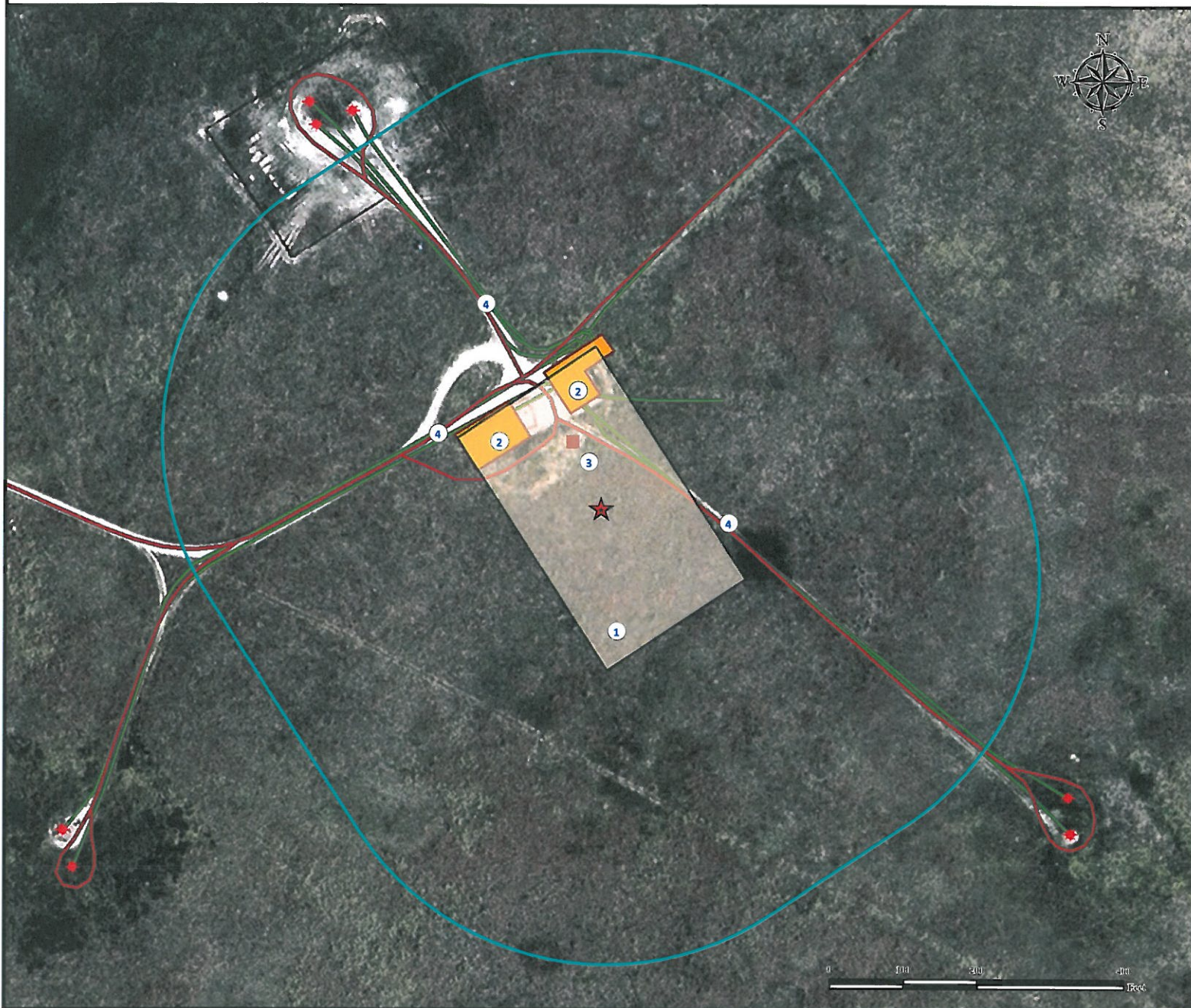


# Location Drawing

## USA FED 26C-36HZ FACILITY

SE¼ SE¼ SECTION 36, TOWNSHIP 3 NORTH, RANGE 66 WEST OF THE 6TH PRINCIPAL MERIDIAN



1. Proposed Facility USA FED 26C-36HZ FACILITY.
2. Existing facilities are  $\pm 135'$  NW and  $\pm 137'$  NW (To be removed).
3. Emissions control device is  $\pm 97'$  NW (To be removed).
4. Private roads are  $\pm 79'$  NE,  $\pm 201'$  NW and  $\pm 208'$  NW.

### Legend

- |                   |                      |                      |
|-------------------|----------------------|----------------------|
| ECD               | Facilities Enclosure | Reference Point      |
| Existing Well     | Disturbance Area     | Private Road         |
| Proposed Facility | 400' Radius          | Underground Pipeline |

### Reference Location

\*\* All Measurements are Made from Reference Point \*\*

Lat: 40.177717° Long: -104.720468° (NAD83)  
Elevation: 4980 Feet

FSL: 1102' FEL: 1298'



Use our resources to find yours!  
[www.petro-fs.com](http://www.petro-fs.com)  
(303) 928-7128

Field Date: 09/28/2011  
Drafting Date: 09/30/2011  
Drafter: DMM  
Checked By: BHF

Data Sources:  
- Aerial courtesy of NAIP (2009)

Surface Use: Rangeland

Prepared for:



KERR-MCGEE OIL & GAS ONSHORE LP