

HALLIBURTON

GUNNISON ENERGY CORP - EBUS

**SPU Cockroft 1294-23-41D-H1R
WILD CAT
Delta County , Colorado**

Cement Intermediate Casing **20-Nov-2012**

Post Job Report

The Road to Excellence Starts with Safety

Sold To #: 338641	Ship To #: 2943741	Quote #:	Sales Order #: 9930825
Customer: GUNNISON ENERGY CORP - EBUS		Customer Rep: Laws, Steve	
Well Name: SPU Cockroft	Well #: 1294-23-41D-H1R	API/UWI #: 05-029-06109	
Field: WILD CAT	City (SAP): CEDAREGE	County/Parish: Delta	State: Colorado
Lat: N 38.999 deg. OR N 38 deg. 59 min. 57.48 secs.		Long: W 107.859 deg. OR W -108 deg. 8 min. 27.924 secs.	
Contractor: H&P	Rig/Platform Name/Num: H&P 273		
Job Purpose: Cement Intermediate Casing			
Well Type: Development Well	Job Type: Cement Intermediate Casing		
Sales Person: SCOTT, KYLE	Srv Supervisor: DEUSSEN, EDWARD	MBU ID Emp #: 485182	

Job Personnel

HES Emp Name	Exp Hrs	Emp #	HES Emp Name	Exp Hrs	Emp #	HES Emp Name	Exp Hrs	Emp #
BANKS, BRENT A	40	371353	DEUSSEN, EDWARD Eric	40	485182	GRAGERT, JEFFREY Robert	40	528091
KAMMEIER, CHRISTOPHER Michael	40	524554	KUKUS, CHRISTOPHER A	6	413952	LINN, PAUL Andrew	40	479143
SIMINEO, JEROD M	17	479954						

Equipment

HES Unit #	Distance-1 way	HES Unit #	Distance-1 way	HES Unit #	Distance-1 way	HES Unit #	Distance-1 way
10616651C	90 mile	10784064	90 mile	10856464	90 mile	10938657	90 mile
11006314	90 mile	11021972	90 mile	11027039	90 mile	11071463	90 mile
11259886	90 mile	11710582	90 mile	11808827	90 mile	11808837	90 mile

Job Hours

Date	On Location Hours	Operating Hours	Date	On Location Hours	Operating Hours	Date	On Location Hours	Operating Hours
11/19/12	21	4	11/20/12	19	13			
TOTAL			Total is the sum of each column separately					

Job

Formation Name					Job Times			
Formation Depth (MD)	Top		Bottom		Called Out	Date	Time	Time Zone
Form Type		BHST			On Location	18 - Nov - 2012	18:30	MST
Job depth MD	7821. ft	Job Depth TVD	7821. ft		Job Started	19 - Nov - 2012	00:00	MST
Water Depth		Wk Ht Above Floor	6. ft		Job Completed	19 - Nov - 2012	23:06	MST
Perforation Depth (MD)	From		To		Departed Loc	20 - Nov - 2012	17:10	MST
						19 - Nov - 2012	19:00	MST

Well Data

Description	New / Used	Max pressure psig	Size in	ID in	Weight lbm/ft	Thread	Grade	Top MD ft	Bottom MD ft	Top TVD ft	Bottom TVD ft
-------------	---------------	-------------------------	------------	----------	------------------	--------	-------	--------------	--------------------	------------------	---------------------

Sales/Rental/3rd Party (HES)

Description	Qty	Qty uom	Depth	Supplier
ADC (AUTO DENSITY CTRL) SYS, /JOB,ZI	1	JOB		
R/A DENSOMETER W/CHART RECORDER,/JOB,ZI	1	JOB		
PORT. DATA ACQUIS. W/OPTICEM RT W/HES	1	EA		

Tools and Accessories

Type	Size	Qty	Make	Depth	Type	Size	Qty	Make	Depth	Type	Size	Qty	Make
Guide Shoe					Packer					Top Plug	7	1	HES
Float Shoe					Bridge Plug					Bottom Plug			
Float Collar					Retainer					SSR plug set			
Insert Float										Plug Container			
Stage Tool										Centralizers			

Miscellaneous Materials

Gelling Agt	Conc	Surfactant	Conc	Acid Type	Qty	Conc	%
Treatment Fld	Conc	Inhibitor	Conc	Sand Type	Size	Qty	

Fluid Data									
Stage/Plug #: 1									
Fluid #	Stage Type	Fluid Name	Qty	Qty uom	Mixing Density lbm/gal	Yield ft ³ /sk	Mix Fluid Gal/sk	Rate bbl/min	Total Mix Fluid Gal/sk
1	FreSh Water Spacer	FRESH WATER	23.00	bbl	.	.0	.0	1.5	
4	Varicem Lead	VARICEM (TM) CEMENT (452009)	510.0	sacks	12.5	1.9	9.8	5.0	9.8
	9.8 Gal	FRESH WATER							
5	Halcem Tail Cement	HALCEM (TM) SYSTEM (452986)	230.0	sacks	13.1	1.75	8.13	5.0	8.13
	8.13 Gal	FRESH WATER							
6	Displacement	FRESH WATER	295.00	bbl	8.33	.0	.0	5.0	
Calculated Values		Pressures		Volumes					
Displacement	542.5	Shut In: Instant		Lost Returns		Cement Slurry	244.3	Pad	
Top Of Cement		5 Min		Cement Returns	NONE	Actual Displacement	542.5	Treatment	
Frac Gradient		15 Min		Spacers	23	Load and Breakdown		Total Job	809.8
Rates									
Circulating		Mixing	5	Displacement	5	Avg. Job	5		
Cement Left In Pipe	Amount	580 ft	Reason	Shoe joint & Company man request					
Frac Ring # 1 @	ID	Frac ring # 2 @	ID	Frac Ring # 3 @	ID	Frac Ring # 4 @	ID		
The Information Stated Herein Is Correct				Customer Representative Signature					

The Road to Excellence Starts with Safety

Sold To #: 338641	Ship To #: 2943741	Quote #:	Sales Order #: 9930825
Customer: GUNNISON ENERGY CORP - EBUS	Customer Rep: Laws, Steve		
Well Name: SPU Cockroft	Well #: 1294-23-41D-H1R	API/UWI #: 05-029-06109	
Field: WILD CAT	City (SAP): CEDAREDDGE	County/Parish: Delta	State: Colorado
Legal Description:			
Lat: N 38.999 deg. OR N 38 deg. 59 min. 57.48 secs.		Long: W 107.859 deg. OR W -108 deg. 8 min. 27.924 secs.	
Contractor: H&P	Rig/Platform Name/Num: H&P 273		
Job Purpose: Cement Intermediate Casing			Ticket Amount:
Well Type: Development Well	Job Type: Cement Intermediate Casing		
Sales Person: SCOTT, KYLE	Srvc Supervisor: DEUSSEN, EDWARD	MBU ID Emp #: 485182	

Activity Description	Date/Time	Cht #	Rate bbl/min	Volume bbl		Pressure psig		Comments
				Stage	Total	Tubing	Casing	
Call Out	11/18/2012 18:45							CREW ALREADY IN FIELD
Pre-Convoy Safety Meeting	11/18/2012 22:15							ALL HES PERSONNEL
Crew Leave Yard	11/18/2012 22:30							1 ELITE, 2 660s, 1 WINCH & BIN, 1 FREUHAUF, 1 PICKUP - SUPERFLUSH TO MEET ON SITE LATER
Arrive At Loc	11/19/2012 00:00							RIG STILL RUNNING CASING
Assessment Of Location Safety Meeting	11/19/2012 00:15							
Pre-Rig Up Safety Meeting	11/19/2012 10:45							ALL HES PERSONNEL
Rig-Up Equipment	11/19/2012 11:00							1 HARD LINE TO FLOOR W/ STANDPIPE, 2 WATER LINES TO UPRIGHT AND DAY TANK, BULK HOSE TO BIN, HOSE TO SUPERFLUSH
Pre-Job Safety Meeting	11/19/2012 18:30							ALL HES PERSONNEL AND RIG CREW - RIG STILL CIRCULATING WATER - RIG HAD TOTAL LOSSES - SCOPE OF WORK WAS CHANGED TO PUMP ONLY 58 SACKS OF TAIL DOWN HOLE TO FILL SHOE JOINT, BUMP PLUG, AND BRING CEMENT UP BACKSIDE TO 7400'

Sold To #: 338641

Ship To #: 2943741

Quote # :

Sales Order # :

9930825

SUMMIT Version: 7.3.0045

Monday, December 03, 2012 03:17:00

HALLIBURTON

Cementing Job Log

Activity Description	Date/Time	Cht #	Rate bbl/ min	Volume bbl		Pressure psig		Comments
				Stage	Total	Tubing	Casing	
Start Job	11/19/2012 23:06	1						TD 7837', TP 7821', SJ 77', MW 10.15, OH 8 3/4", SURF CSG 9 5/8"
								40# N-80 @ 2196', VISC 54, PV 18, YP 15, CASING 7" 26# HCP-110 - PUMP THROUGH 7" SWAGE - NO CEMENT HEAD AVAILABLE
Pump Water	11/19/2012 23:07	2	1	2			37.0	FILL LINES
Pressure Test	11/19/2012 23:11	3						PRESSURED UP TO 3940 PSI - PRESSURE HELD WELL
Pump Spacer 1	11/19/2012 23:17	4	1.5	23			2640.0	FRESH WATER AHEAD TO GET INJECTION TEST
Pump Tail Cement	11/19/2012 23:40	5	1.2	18.1			1640.0	58 SKS, 13.1 PPG, 1.75 YIELD, 8.13 GAL/SK
Shutdown	11/20/2012 00:03	6						
Drop Top Plug	11/20/2012 00:05	7						
Pump Displacement	11/20/2012 00:15	8	2.3	281.5			3967.0	WAS UNABLE TO FULLY DISPLACE - STOPPED MOVING FLUID WITH 14 1/2 BBLs TO GO - MAX PRESSURE OBTAINED
Shutdown	11/20/2012 05:21	9						UNABLE TO BUMP PLUG - CALCULATED 380 FT CEMENT LEFT IN CASING
Release Casing Pressure	11/20/2012 05:43	10						PRESSURE RELEASED - GOT 2 1/2 BBL BACK
Other	11/20/2012 06:00							USED 10 LBS SUGAR IN CLEANUP - STAND BY FOR WIRELINE TO SET PERFS
Activity Description	Date/Time	Cht #	Rate bbl/ min	Volume bbl		Pressure psig		Comments
				Stage	Total	Tubing	Casing	

Sold To # : 338641

Ship To # : 2943741

Quote # :

Sales Order # : 9930825

SUMMIT Version: 7.3.0045

Monday, December 03, 2012 03:17:00

HALLIBURTON

Cementing Job Log

Start Job	11/20/2012 11:21	11						PHASE 2 - PUMP REMAINING CEMENT THROUGH PERFS - PERFS@ 7048', RIG CIRCULATED @ 4 BPM W/ PRESSURE AT 216 PSI FOR 50 MINUTES - CEMENT TAGGED @ 7100' - CO. REP WANTS TO LEAVE 200' OF CEMENT IN PIPE
Pump Water	11/20/2012 11:21		1	1.5			57.0	
Pressure Test	11/20/2012 11:21							PRESSURED HELD WELL @ 5189 PSI
Pump Lead Cement	11/20/2012 11:21		5	172.6			235.0	510 SACKS, 12.5 PPG, 1.9 YIELD, 9.8 GAL/SK
Pump Tail Cement	11/20/2012 11:21		5	53.6			241.0	APPROX 172 SACKS, 13.1 PPG, 1.75 YIELD, 8.13 GAL/SK
Pump Displacement	11/20/2012 11:21		5	261.5			1457. 0	DISPLACED TO 6848' - LEAVE 200 FT IN CASING
Shutdown	11/20/2012 11:21							PRESSURE STABILIZED AT 1020 PSI
Release Casing Pressure	11/20/2012 11:21							SHUT IN WELL - LEFT 2" LO-TORQ AND 7" SWAGE ON LOCATION
End Job	11/20/2012 11:21							NO DERRICK CHARGE, NO BOOSTER TRAILER CHARGE, NO PLUG CONTAINER OR QUICK LATCH CHARGE, DID NOT USE MMCR OR SUPERFLUSH - USED 10 LBS SUGAR. 2 DAY BIN CHARGE, 31 ADD HOURS FOR ELITE, 39 HOURS ON SITE FOR SUPERFLUSH TRANSPORT, 11 ADD HOURS FOR 1 660,
Other	11/20/2012 18:21							33 ADD HOURS FOR 2ND 660, 13 HOURS FOR SERVICE LEADER

Sold To # : 338641

Ship To # :2943741

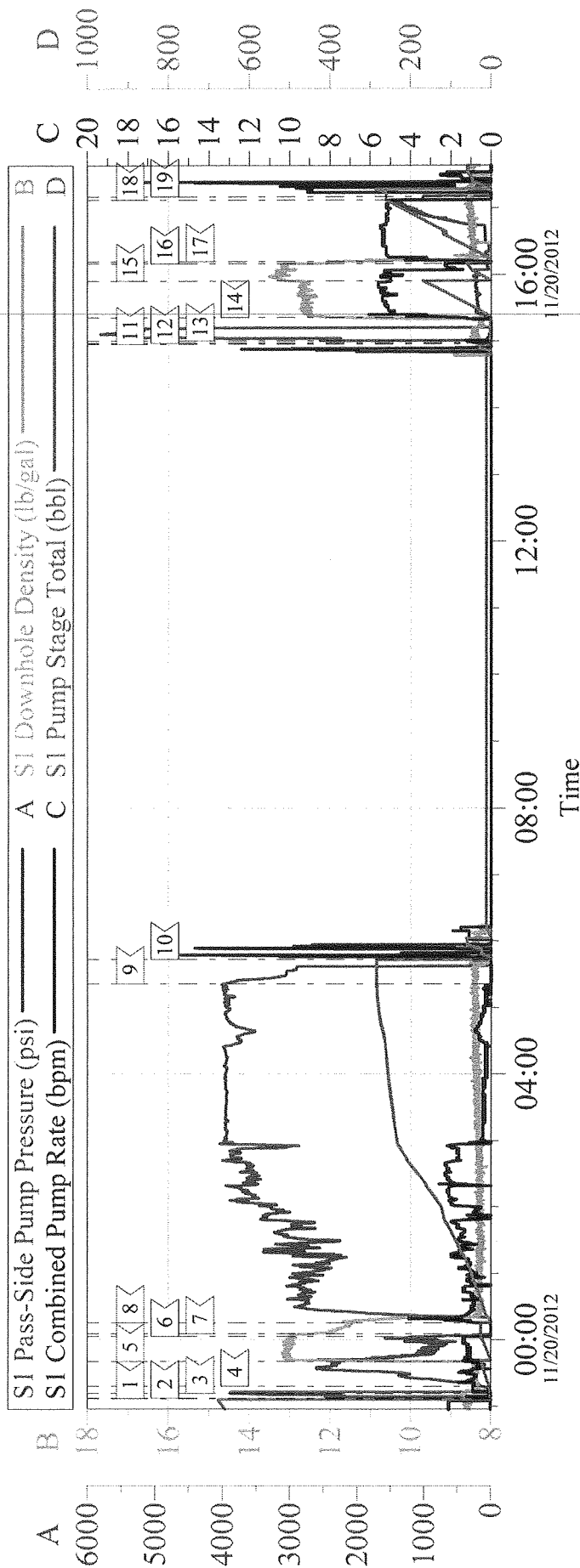
Quote # :

Sales Order # : 9930825

SUMMIT Version: 7.3.0045

Monday, December 03, 2012 03:17:00

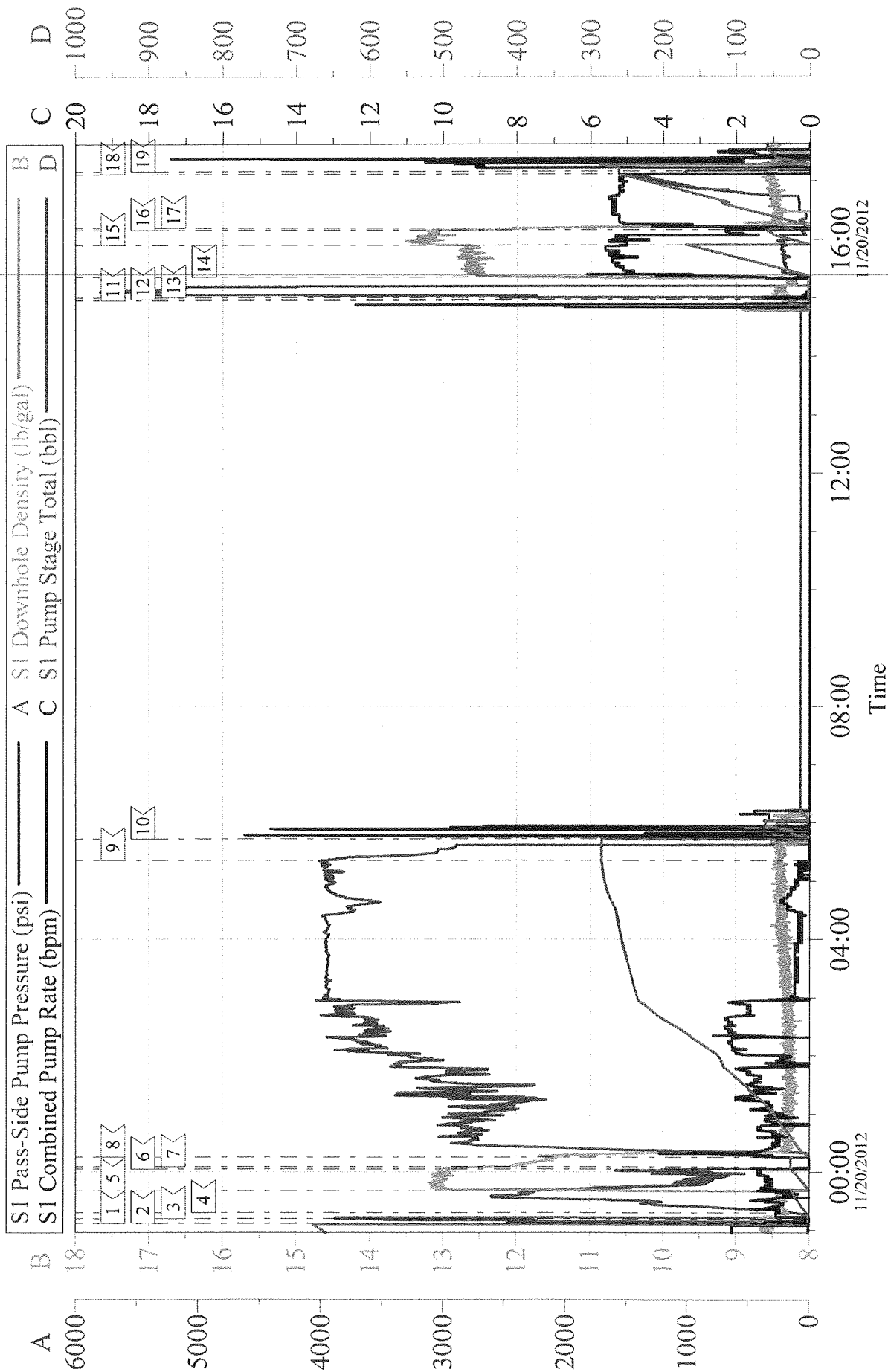
GUNNISON - SPU COCKROFT 1294-23-41D-H1R 7 INCH INTERMEDIATE - PHASE 2



Local Event Log					
1	START JOB	11/19/2012 23:06:55	2	FILL LINES	11/19/2012 23:07:32
3	PRESSURE TEST	11/19/2012 23:11:29	4	PUMP WATER AHEAD	11/19/2012 23:17:58
5	PUMP TAIL CEMENT	11/19/2012 23:40:41	6	SHUTDOWN	11/20/2012 00:03:18
7	DROP TOP PLUG	11/20/2012 00:05:30	8	PUMP DISPLACEMENT	11/20/2012 00:15:30
9	SHUTDOWN	11/20/2012 05:21:13	10	END JOB	11/20/2012 05:43:15
11	START JOB PART 2	11/20/2012 14:57:53	12	FILL LINES	11/20/2012 14:58:59
13	PRESSURE TEST	11/20/2012 15:01:03	14	PUMP LEAD CEMENT	11/20/2012 15:21:57
15	PUMP TAIL CEMENT	11/20/2012 15:54:46	16	SHUTDOWN/WASH UP PUMP	11/20/2012 16:10:27
17	PUMP DISPLACEMENT	11/20/2012 16:12:28	18	SHUTDOWN	11/20/2012 17:07:31
19	RELEASE PRESSURE/END JOB	11/20/2012 17:10:47			

Customer: GUNNISON	Job Date: 19-Nov-2012	Sales Order #: 9930825
Well Description: SPU COCKROFT	Job Type: INTERMEDIATE	ADC Used: NO
Company Rep: MITCH CARLSON	Cement Supervisor: ED DEUSSEN	Elite #4: ANDREW LINN

GUNNISON - SPU COCKROFT 1294-23-41D-H1R 7 INCH INTERMEDIATE - PHASE 2



Customer: GUNNISON	Job Date: 19-Nov-2012	Sales Order #: 9930825
Well Description: SPU COCKROFT	Job Type: INTERMEDIATE	ADC Used: NO
Company Rep: MITCH CARLSON	Cement Supervisor: ED DEUSSEN	Elite #4: ANDREW LINN

HALLIBURTON

Water Analysis Report

Company: WILLIAMS

Date: 11/19/2012

Submitted by: ED DEUSSEN

Date Rec.: 11/19/2012

Attention: J.TROUT

S.O.# 9930825

Lease SPU COCKROFT

Job Type: 7" INTERMEDIATE

Well # 1294-23-41D-H1R

Specific Gravity	MAX	1
pH	8	7
Potassium (K)	5000	450 Mg / L
Calcium (Ca)	500	50 Mg / L
Iron (FE2)	300	0 Mg / L
Chlorides (Cl)	3000	0 Mg / L
Sulfates (SO ₄)	1500	<200 Mg / L
Temp	40-80	62 Deg
Total Dissolved Solids		60 Mg / L

Respectfully: ED DEUSSEN

Title: CEMENTING SUPERVISOR

Location: Grand Junction, CO

NOTICE:

This report is limited to the described sample tested. Any person using or relying on this report agrees that Halliburton shall not be liable for any loss or damage whether due to act or omission resulting from such report or