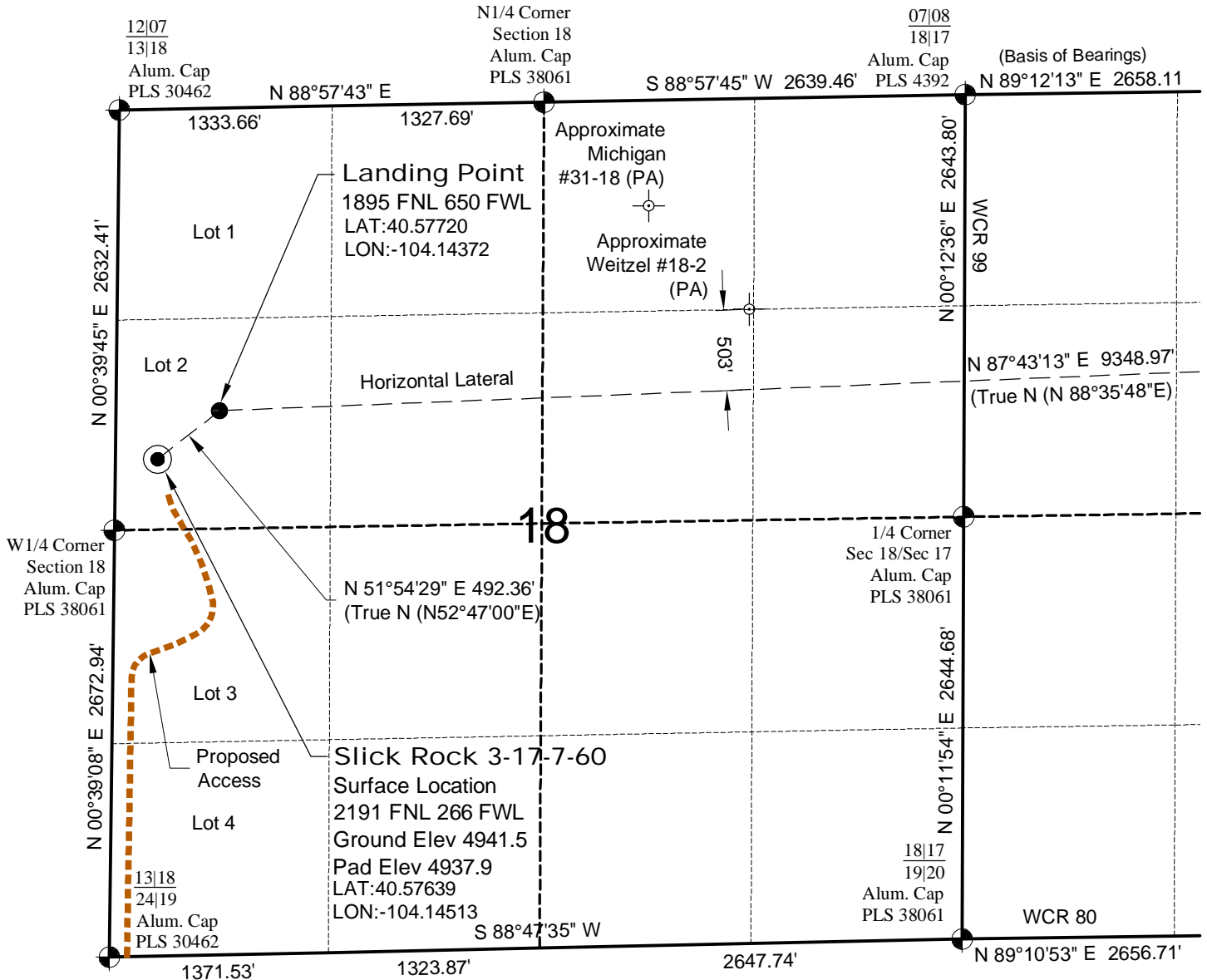


# WELL LOCATION MAP

**SLICK ROCK  
2-18-7-60 PAD**

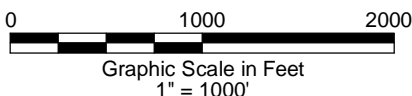


## SURVEYOR'S STATEMENT

The undersigned hereby states that the well location shown hereon was staked on the ground based on existing monumentation and/or physical evidence found in the field and is correct to the best of my knowledge, information and belief.

## NOTES

- 1.) Horizontal coordinates based on NGS control point "SNOW" and vertical datum based on NGS control point "G 209" with an elevation of 4955.32. NAVD 1988.
- 2.) All directions, distances, and dimensions shown hereon are based on coordinates from the "Colorado coordinate system of 1983 north zone" (article 52 of title 38, C.R.S.).
- 3.) All section line dimensions shown hereon are based on field measurements of existing monuments and/or physical evidence found in the field unless otherwise indicated.
- 4.) Physical features shown hereon are for graphical representation only.
- 5.) See Form 2A for visible improvements within 400' of wellhead.
- 6.) Distances to nearest section lines are measured perpendicularly.
- 7.) This is not a land survey nor land survey plat.
- 8.) Date of Survey 1/9/13; Date of Drawing 1/15/13. REV 1  
PDOP Reading: 1.7 Instrument Operator: Marc Woodard

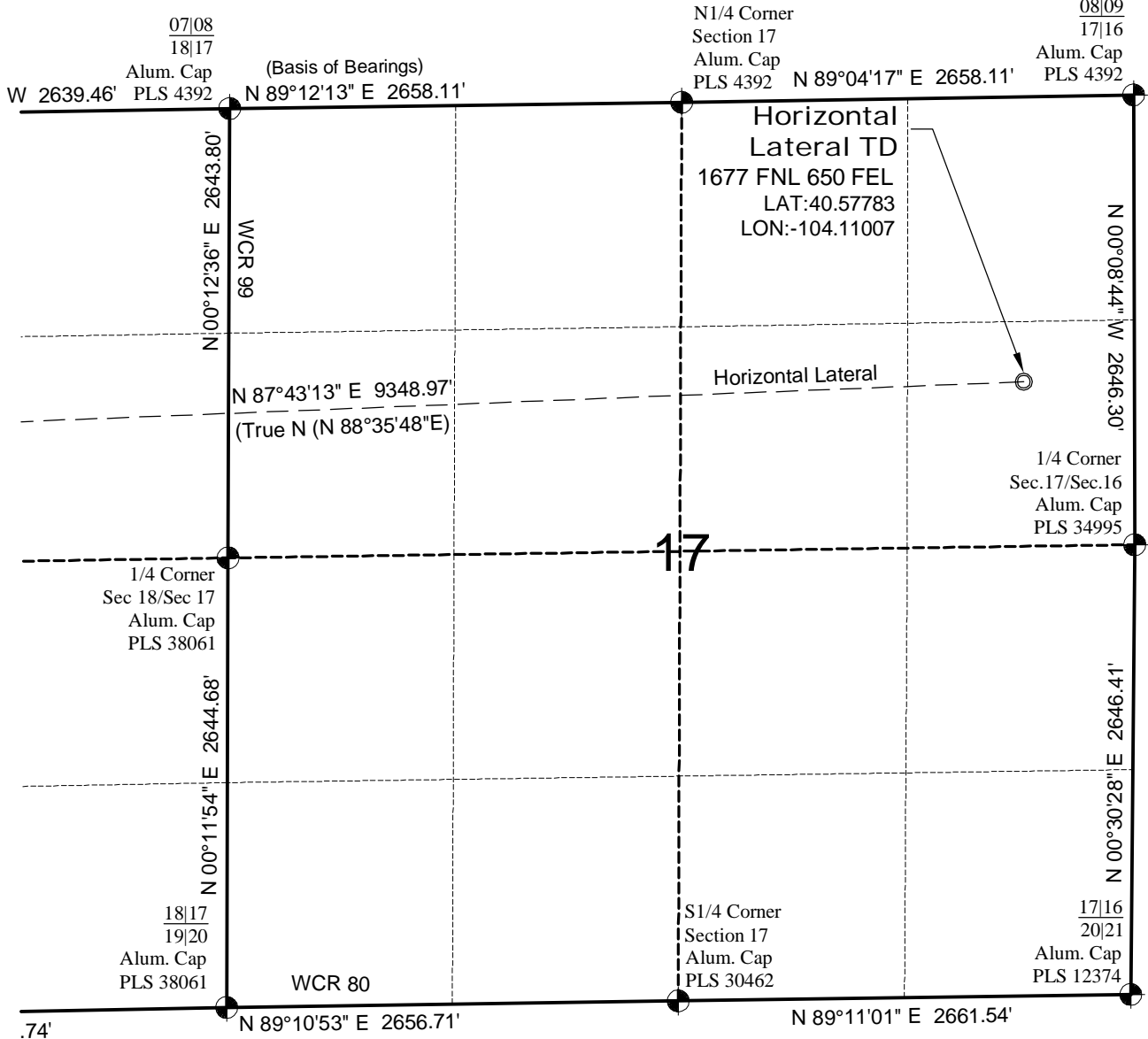


**CARRIZO NIOBRARA LLC**  
**SLICK ROCK 3-17-7-60**

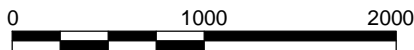
**SL LOT 2 SEC. 18 T7N R60W**  
**HL TD SE1/4 NE1/4 SEC. 17 T7N R60W**  
**6th PM WELD COUNTY COLORADO**

# HORIZONTAL LATERAL TD MAP

**SLICK ROCK  
2-18-7-60 PAD**



North



Graphic Scale in Feet  
1" = 1000'



**LAND SURVEYING AND MAPPING**  
**LAFAYETTE - WINTER PARK**  
Ph 303 666 0379 Fx 303 665 6320

**CARRIZO NIOBRARA LLC**  
**SLICK ROCK 3-17-7-60**

**SL LOT 2 SEC. 18 T7N R60W**  
**HL TD SE1/4 NE1/4 SEC. 17 T7N R60W**  
**6th PM WELD COUNTY COLORADO**