

Anadarko Petroleum Corp.

Weld County, CO (NAD 83)

Sec. 22-T3N-R66W

Morning Fresh 36N-22HZ

Plan A Rev 0

Plan: Plan A Rev 0 Permit

Sperry Drilling Services

Proposal Report

20 September, 2012

Well Coordinates: 1,322,555.90 N, 3,205,006.95 E (40° 12' 59.34" N, 104° 45' 57.22" W)

Ground Level: 4,885.00 ft

Local Coordinate Origin: Centered on Well Morning Fresh 36N-22HZ

Viewing Datum: RKB=17 @ 4902.00ft (Drilling Rig)

TVDs to System: N

North Reference: True

Unit System: API - US Survey Feet - Custom

Geodetic Scale Factor Applied

Version: 2003.16 Build: 43I

HALLIBURTON

Project: Weld County, CO (NAD 83)
 Site: Sec. 22-T3N-R66W
 Well: Morning Fresh 36N-22HZ
 Wellbore: Plan A Rev 0
 Design: Plan A Rev 0 Permit

Anadarko Petroleum Corp.

HALLIBURTON
 Sperry Drilling

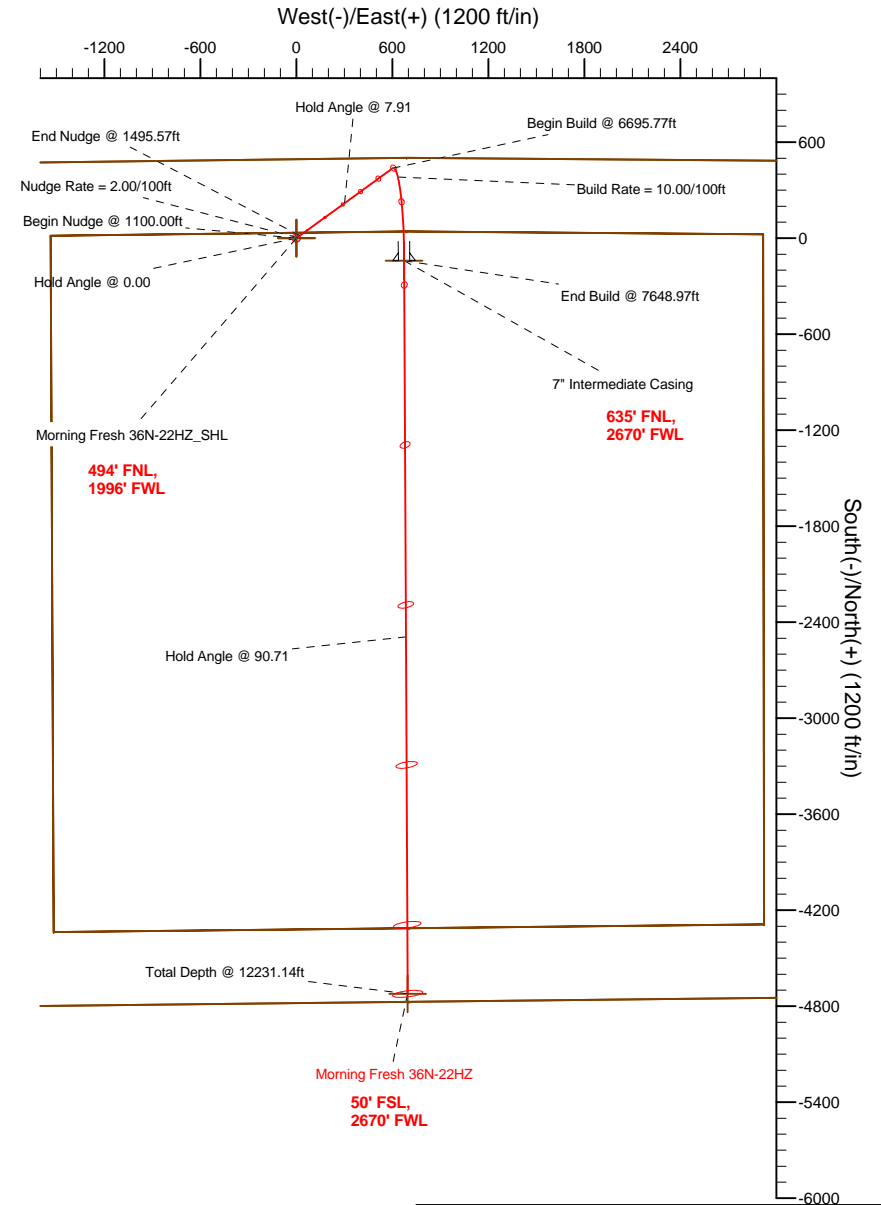
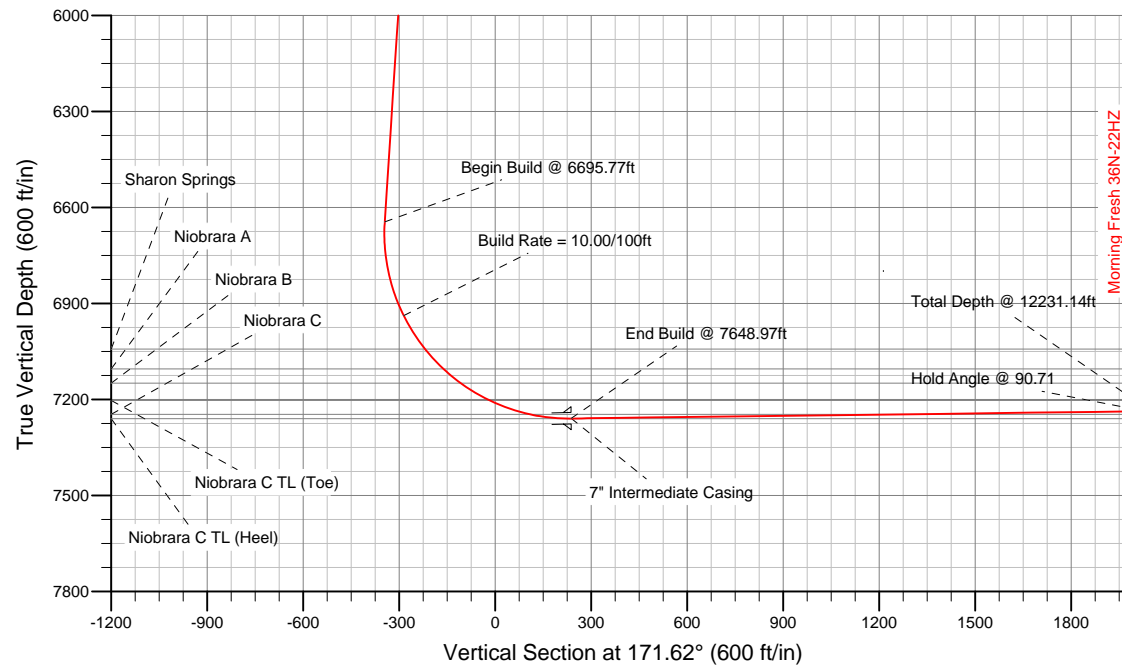
SECTION DETAILS

Sec	MD	Inc	Azi	TVD	+N/-S	+E/-W	DLeg	TFace	VSec	Target
1	0.00	0.00	0.00	0.00	0.00	0.00	0.00	0.00	0.00	
2	1100.00	0.00	0.00	1100.00	0.00	0.00	0.00	0.00	0.00	
3	1495.57	7.91	53.99	1494.31	16.03	22.06	2.00	53.99	-12.65	
4	6695.77	7.91	53.99	6645.02	436.85	601.04	0.00	0.00	-344.62	
5	7648.97	90.71	179.73	7260.00	-141.00	674.00	10.00	125.40	237.70	Morning Fresh 36N-22HZ_Casing Point
6	12231.14	90.71	179.73	7203.00	-4722.76	695.53	0.00	0.00	4773.70	Morning Fresh 36N-22HZ_BHL

WELLBORE TARGET DETAILS (LAT/LONG)

Name	TVD	+N/-S	+E/-W	Latitude	Longitude	Shape
Morning Fresh 36N-22HZ_Section Lines	0.00	0.00	0.00	40.216484	-104.765895	Polygon
Morning Fresh 36N-22HZ_Setback Lines	0.00	0.00	0.00	40.216484	-104.765895	Polygon
Morning Fresh 36N-22HZ_SHL	0.00	0.00	0.00	40.216484	-104.765895	Point
Morning Fresh 36N-22HZ_BHL	7203.00	-4722.76	695.53	40.203520	-104.763405	Point
Morning Fresh 36N-22HZ_Casing Point	7260.00	-141.00	674.00	40.216097	-104.763482	Point

Target Line:
7262.16' TVDkb @ 0' VS Drilling 90.71°



WELL DETAILS: Morning Fresh 36N-22HZ

Ground Level: 4885.00 RKB=17 @ 4902.00ft (Drilling Rig)

Plan: Plan A Rev 0 Permit (Morning Fresh 36N-22HZ/Plan A Rev 0)

Created By: Fred Hartmann Date: 09/20/2012
 Reviewed: _____ Date: _____

Plan Report for Morning Fresh 36N-22HZ - Plan A Rev 0 Permit

Measured Depth (ft)	Inclination (°)	Azimuth (°)	Vertical Depth (ft)	+N-S (ft)	+E-W (ft)	Vertical Section (ft)	Dogleg Rate (°/100ft)	Build Rate (°/100ft)	Turn Rate (°/100ft)	Toolface Azimuth (°)
0.00	0.00	0.00	0.00	0.00	0.00	0.00	0.00	0.00	0.00	0.00
Morning Fresh 36N-22HZ_SHL - Morning Fresh 36N-22HZ_Section Lines - Morning Fresh 36N-22HZ_Setback Lines										
100.00	0.00	0.00	100.00	0.00	0.00	0.00	0.00	0.00	0.00	0.00
200.00	0.00	0.00	200.00	0.00	0.00	0.00	0.00	0.00	0.00	0.00
300.00	0.00	0.00	300.00	0.00	0.00	0.00	0.00	0.00	0.00	0.00
400.00	0.00	0.00	400.00	0.00	0.00	0.00	0.00	0.00	0.00	0.00
500.00	0.00	0.00	500.00	0.00	0.00	0.00	0.00	0.00	0.00	0.00
600.00	0.00	0.00	600.00	0.00	0.00	0.00	0.00	0.00	0.00	0.00
Hold Angle @ 0.00										
700.00	0.00	0.00	700.00	0.00	0.00	0.00	0.00	0.00	0.00	0.00
750.00	0.00	0.00	750.00	0.00	0.00	0.00	0.00	0.00	0.00	0.00
Fox Hills										
800.00	0.00	0.00	800.00	0.00	0.00	0.00	0.00	0.00	0.00	0.00
900.00	0.00	0.00	900.00	0.00	0.00	0.00	0.00	0.00	0.00	0.00
1,000.00	0.00	0.00	1,000.00	0.00	0.00	0.00	0.00	0.00	0.00	0.00
1,100.00	0.00	0.00	1,100.00	0.00	0.00	0.00	0.00	0.00	0.00	0.00
Begin Nudge @ 1100.00ft										
1,200.00	2.00	53.99	1,199.98	1.03	1.41	-0.81	2.00	2.00	0.00	53.99
1,300.00	4.00	53.99	1,299.84	4.10	5.64	-3.24	2.00	2.00	0.00	0.00
Nudge Rate = 2.00/100ft										
1,400.00	6.00	53.99	1,399.45	9.23	12.69	-7.28	2.00	2.00	0.00	0.00
1,495.57	7.91	53.99	1,494.31	16.03	22.06	-12.65	2.00	2.00	0.00	0.00
End Nudge @ 1495.57ft										
1,500.00	7.91	53.99	1,498.70	16.39	22.55	-12.93	0.00	0.00	0.00	0.00
1,600.00	7.91	53.99	1,597.75	24.48	33.68	-19.31	0.00	0.00	0.00	0.00
1,700.00	7.91	53.99	1,696.80	32.57	44.82	-25.70	0.00	0.00	0.00	0.00
1,800.00	7.91	53.99	1,795.85	40.67	55.95	-32.08	0.00	0.00	0.00	0.00
1,900.00	7.91	53.99	1,894.89	48.76	67.08	-38.46	0.00	0.00	0.00	0.00
2,000.00	7.91	53.99	1,993.94	56.85	78.22	-44.85	0.00	0.00	0.00	0.00
2,100.00	7.91	53.99	2,092.99	64.94	89.35	-51.23	0.00	0.00	0.00	0.00
2,200.00	7.91	53.99	2,192.04	73.04	100.49	-57.62	0.00	0.00	0.00	0.00
2,300.00	7.91	53.99	2,291.09	81.13	111.62	-64.00	0.00	0.00	0.00	0.00
2,400.00	7.91	53.99	2,390.14	89.22	122.75	-70.38	0.00	0.00	0.00	0.00
2,500.00	7.91	53.99	2,489.18	97.31	133.89	-76.77	0.00	0.00	0.00	0.00
2,600.00	7.91	53.99	2,588.23	105.41	145.02	-83.15	0.00	0.00	0.00	0.00
2,700.00	7.91	53.99	2,687.28	113.50	156.16	-89.53	0.00	0.00	0.00	0.00
2,800.00	7.91	53.99	2,786.33	121.59	167.29	-95.92	0.00	0.00	0.00	0.00
2,900.00	7.91	53.99	2,885.38	129.68	178.42	-102.30	0.00	0.00	0.00	0.00
3,000.00	7.91	53.99	2,984.43	137.77	189.56	-108.69	0.00	0.00	0.00	0.00
3,100.00	7.91	53.99	3,083.47	145.87	200.69	-115.07	0.00	0.00	0.00	0.00
3,200.00	7.91	53.99	3,182.52	153.96	211.82	-121.45	0.00	0.00	0.00	0.00
3,300.00	7.91	53.99	3,281.57	162.05	222.96	-127.84	0.00	0.00	0.00	0.00
3,400.00	7.91	53.99	3,380.62	170.14	234.09	-134.22	0.00	0.00	0.00	0.00
3,500.00	7.91	53.99	3,479.67	178.24	245.23	-140.60	0.00	0.00	0.00	0.00
3,600.00	7.91	53.99	3,578.71	186.33	256.36	-146.99	0.00	0.00	0.00	0.00
3,700.00	7.91	53.99	3,677.76	194.42	267.49	-153.37	0.00	0.00	0.00	0.00
3,800.00	7.91	53.99	3,776.81	202.51	278.63	-159.76	0.00	0.00	0.00	0.00
3,900.00	7.91	53.99	3,875.86	210.61	289.76	-166.14	0.00	0.00	0.00	0.00
3,997.06	7.91	53.99	3,972.00	218.46	300.57	-172.34	0.00	0.00	0.00	0.00
Parkman										
4,000.00	7.91	53.99	3,974.91	218.70	300.90	-172.52	0.00	0.00	0.00	0.00
Hold Angle @ 7.91										
4,100.00	7.91	53.99	4,073.96	226.79	312.03	-178.91	0.00	0.00	0.00	0.00
4,200.00	7.91	53.99	4,173.00	234.88	323.16	-185.29	0.00	0.00	0.00	0.00
4,300.00	7.91	53.99	4,272.05	242.97	334.30	-191.67	0.00	0.00	0.00	0.00
4,400.00	7.91	53.99	4,371.10	251.07	345.43	-198.06	0.00	0.00	0.00	0.00
4,494.80	7.91	53.99	4,465.00	258.74	355.99	-204.11	0.00	0.00	0.00	0.00
Sussex										

Plan Report for Morning Fresh 36N-22HZ - Plan A Rev 0 Permit

Measured Depth (ft)	Inclination (°)	Azimuth (°)	Vertical Depth (ft)	+N-S (ft)	+E-W (ft)	Vertical Section (ft)	Dogleg Rate (°/100ft)	Build Rate (°/100ft)	Turn Rate (°/100ft)	Toolface Azimuth (°)
4,500.00	7.91	53.99	4,470.15	259.16	356.56	-204.44	0.00	0.00	0.00	0.00
4,600.00	7.91	53.99	4,569.20	267.25	367.70	-210.83	0.00	0.00	0.00	0.00
4,700.00	7.91	53.99	4,668.25	275.34	378.83	-217.21	0.00	0.00	0.00	0.00
4,800.00	7.91	53.99	4,767.29	283.44	389.97	-223.59	0.00	0.00	0.00	0.00
4,900.00	7.91	53.99	4,866.34	291.53	401.10	-229.98	0.00	0.00	0.00	0.00
5,000.00	7.91	53.99	4,965.39	299.62	412.23	-236.36	0.00	0.00	0.00	0.00
5,100.00	7.91	53.99	5,064.44	307.71	423.37	-242.74	0.00	0.00	0.00	0.00
5,200.00	7.91	53.99	5,163.49	315.81	434.50	-249.13	0.00	0.00	0.00	0.00
5,300.00	7.91	53.99	5,262.53	323.90	445.63	-255.51	0.00	0.00	0.00	0.00
5,400.00	7.91	53.99	5,361.58	331.99	456.77	-261.90	0.00	0.00	0.00	0.00
5,500.00	7.91	53.99	5,460.63	340.08	467.90	-268.28	0.00	0.00	0.00	0.00
5,600.00	7.91	53.99	5,559.68	348.18	479.04	-274.66	0.00	0.00	0.00	0.00
5,700.00	7.91	53.99	5,658.73	356.27	490.17	-281.05	0.00	0.00	0.00	0.00
5,800.00	7.91	53.99	5,757.78	364.36	501.30	-287.43	0.00	0.00	0.00	0.00
5,900.00	7.91	53.99	5,856.82	372.45	512.44	-293.82	0.00	0.00	0.00	0.00
6,000.00	7.91	53.99	5,955.87	380.54	523.57	-300.20	0.00	0.00	0.00	0.00
6,100.00	7.91	53.99	6,054.92	388.64	534.71	-306.58	0.00	0.00	0.00	0.00
6,200.00	7.91	53.99	6,153.97	396.73	545.84	-312.97	0.00	0.00	0.00	0.00
6,300.00	7.91	53.99	6,253.02	404.82	556.97	-319.35	0.00	0.00	0.00	0.00
6,400.00	7.91	53.99	6,352.07	412.91	568.11	-325.73	0.00	0.00	0.00	0.00
6,500.00	7.91	53.99	6,451.11	421.01	579.24	-332.12	0.00	0.00	0.00	0.00
6,600.00	7.91	53.99	6,550.16	429.10	590.37	-338.50	0.00	0.00	0.00	0.00
6,695.77	7.91	53.99	6,645.02	436.85	601.04	-344.62	0.00	0.00	0.00	0.00
Begin Build @ 6695.77ft										
6,700.00	7.67	56.57	6,649.21	437.18	601.51	-344.87	10.00	-5.61	61.08	125.40
6,800.00	8.67	131.91	6,748.44	435.81	612.72	-341.89	10.00	1.00	75.34	122.84
6,900.00	17.05	158.05	6,845.92	417.13	623.84	-321.79	10.00	8.38	26.14	48.07
7,000.00	26.56	166.60	6,938.68	381.70	634.53	-285.17	10.00	9.51	8.55	22.50
Build Rate = 10.00/100ft										
7,100.00	36.32	170.81	7,023.91	330.59	644.47	-233.16	10.00	9.76	4.22	14.53
7,124.06	38.68	171.54	7,043.00	316.11	646.71	-218.51	10.00	9.83	3.03	10.92
Sharon Springs										
7,200.00	46.17	173.43	7,099.01	265.35	653.34	-167.33	10.00	9.86	2.48	10.34
7,208.71	47.03	173.61	7,105.00	259.06	654.06	-161.00	10.00	9.88	2.13	8.95
Niobrara A										
7,277.86	53.87	174.92	7,149.00	206.04	659.35	-107.78	10.00	9.89	1.89	8.82
Niobrara B										
7,300.00	56.07	175.29	7,161.71	187.98	660.89	-89.68	10.00	9.91	1.67	7.98
7,400.00	65.98	176.77	7,210.10	100.81	666.89	-2.57	10.00	9.92	1.47	7.77
7,500.00	75.91	178.03	7,242.70	6.51	671.15	91.35	10.00	9.93	1.26	7.06
7,518.91	77.79	178.25	7,247.00	-11.89	671.74	109.64	10.00	9.93	1.18	6.64
Niobrara C										
7,600.00	85.85	179.18	7,258.53	-92.07	673.54	189.22	10.00	9.94	1.15	6.59
7,648.97	90.71	179.73	7,260.00	-141.00	674.00	237.70	10.00	9.94	1.12	6.46
End Build @ 7648.97ft - Niobrara C TL (Heel) - 7" Intermediate Casing - Morning Fresh 36N-22HZ_Casing Point										
7,700.00	90.71	179.73	7,259.37	-192.03	674.24	288.22	0.00	0.00	0.00	6.44
7,800.00	90.71	179.73	7,258.12	-292.02	674.71	387.21	0.00	0.00	0.00	0.00
7,900.00	90.71	179.73	7,256.88	-392.01	675.18	486.20	0.00	0.00	0.00	0.00
8,000.00	90.71	179.73	7,255.63	-492.00	675.65	585.19	0.00	0.00	0.00	0.00
8,100.00	90.71	179.73	7,254.39	-591.99	676.12	684.19	0.00	0.00	0.00	0.00
8,200.00	90.71	179.73	7,253.15	-691.98	676.59	783.18	0.00	0.00	0.00	0.00
8,300.00	90.71	179.73	7,251.90	-791.98	677.06	882.17	0.00	0.00	0.00	0.00
8,400.00	90.71	179.73	7,250.66	-891.97	677.53	981.17	0.00	0.00	0.00	0.00
8,500.00	90.71	179.73	7,249.41	-991.96	678.00	1,080.16	0.00	0.00	0.00	0.00
8,600.00	90.71	179.73	7,248.17	-1,091.95	678.47	1,179.15	0.00	0.00	0.00	0.00
8,700.00	90.71	179.73	7,246.93	-1,191.94	678.94	1,278.14	0.00	0.00	0.00	0.00
8,800.00	90.71	179.73	7,245.68	-1,291.93	679.41	1,377.14	0.00	0.00	0.00	0.00
8,900.00	90.71	179.73	7,244.44	-1,391.92	679.88	1,476.13	0.00	0.00	0.00	0.00

Plan Report for Morning Fresh 36N-22HZ - Plan A Rev 0 Permit

Measured Depth (ft)	Inclination (°)	Azimuth (°)	Vertical Depth (ft)	+N-S (ft)	+E-W (ft)	Vertical Section (ft)	Dogleg Rate (°/100ft)	Build Rate (°/100ft)	Turn Rate (°/100ft)	Toolface Azimuth (°)
9,000.00	90.71	179.73	7,243.19	-1,491.91	680.35	1,575.12	0.00	0.00	0.00	0.00
9,100.00	90.71	179.73	7,241.95	-1,591.91	680.82	1,674.11	0.00	0.00	0.00	0.00
9,200.00	90.71	179.73	7,240.71	-1,691.90	681.29	1,773.11	0.00	0.00	0.00	0.00
9,300.00	90.71	179.73	7,239.46	-1,791.89	681.76	1,872.10	0.00	0.00	0.00	0.00
9,400.00	90.71	179.73	7,238.22	-1,891.88	682.23	1,971.09	0.00	0.00	0.00	0.00
9,500.00	90.71	179.73	7,236.97	-1,991.87	682.70	2,070.08	0.00	0.00	0.00	0.00
9,600.00	90.71	179.73	7,235.73	-2,091.86	683.17	2,169.08	0.00	0.00	0.00	0.00
9,700.00	90.71	179.73	7,234.49	-2,191.85	683.64	2,268.07	0.00	0.00	0.00	0.00
9,800.00	90.71	179.73	7,233.24	-2,291.84	684.11	2,367.06	0.00	0.00	0.00	0.00
9,900.00	90.71	179.73	7,232.00	-2,391.83	684.58	2,466.05	0.00	0.00	0.00	0.00
10,000.00	90.71	179.73	7,230.75	-2,491.83	685.05	2,565.05	0.00	0.00	0.00	0.00
Hold Angle @ 90.71										
10,100.00	90.71	179.73	7,229.51	-2,591.82	685.52	2,664.04	0.00	0.00	0.00	0.00
10,200.00	90.71	179.73	7,228.27	-2,691.81	685.99	2,763.03	0.00	0.00	0.00	0.00
10,300.00	90.71	179.73	7,227.02	-2,791.80	686.46	2,862.02	0.00	0.00	0.00	0.00
10,400.00	90.71	179.73	7,225.78	-2,891.79	686.93	2,961.02	0.00	0.00	0.00	0.00
10,500.00	90.71	179.73	7,224.53	-2,991.78	687.40	3,060.01	0.00	0.00	0.00	0.00
10,600.00	90.71	179.73	7,223.29	-3,091.77	687.87	3,159.00	0.00	0.00	0.00	0.00
10,700.00	90.71	179.73	7,222.05	-3,191.76	688.34	3,257.99	0.00	0.00	0.00	0.00
10,800.00	90.71	179.73	7,220.80	-3,291.76	688.81	3,356.99	0.00	0.00	0.00	0.00
10,900.00	90.71	179.73	7,219.56	-3,391.75	689.28	3,455.98	0.00	0.00	0.00	0.00
11,000.00	90.71	179.73	7,218.31	-3,491.74	689.75	3,554.97	0.00	0.00	0.00	0.00
11,100.00	90.71	179.73	7,217.07	-3,591.73	690.22	3,653.96	0.00	0.00	0.00	0.00
11,200.00	90.71	179.73	7,215.83	-3,691.72	690.69	3,752.96	0.00	0.00	0.00	0.00
11,300.00	90.71	179.73	7,214.58	-3,791.71	691.16	3,851.95	0.00	0.00	0.00	0.00
11,400.00	90.71	179.73	7,213.34	-3,891.70	691.63	3,950.94	0.00	0.00	0.00	0.00
11,500.00	90.71	179.73	7,212.09	-3,991.69	692.10	4,049.94	0.00	0.00	0.00	0.00
11,600.00	90.71	179.73	7,210.85	-4,091.68	692.56	4,148.93	0.00	0.00	0.00	0.00
11,700.00	90.71	179.73	7,209.61	-4,191.68	693.03	4,247.92	0.00	0.00	0.00	0.00
11,800.00	90.71	179.73	7,208.36	-4,291.67	693.50	4,346.91	0.00	0.00	0.00	0.00
11,900.00	90.71	179.73	7,207.12	-4,391.66	693.97	4,445.91	0.00	0.00	0.00	0.00
12,000.00	90.71	179.73	7,205.88	-4,491.65	694.44	4,544.90	0.00	0.00	0.00	0.00
12,100.00	90.71	179.73	7,204.63	-4,591.64	694.91	4,643.89	0.00	0.00	0.00	0.00
12,200.00	90.71	179.73	7,203.39	-4,691.63	695.38	4,742.88	0.00	0.00	0.00	0.00
12,231.13	90.71	179.73	7,203.00	-4,722.76	695.53	4,773.70	0.00	0.00	0.00	0.00
Total Depth @ 12231.14ft - Niobrara C TL (Toe)										
12,231.14	90.71	179.73	7,203.00	-4,722.76	695.53	4,773.70	0.00	0.00	0.00	0.00
Morning Fresh 36N-22HZ_BHL										

Plan Annotations

Measured Depth (ft)	Vertical Depth (ft)	Local Coordinates		Comment
		+N-S (ft)	+E-W (ft)	
600.00	600.00	0.00	0.00	Hold Angle @ 0.00
1,100.00	1,100.00	0.00	0.00	Begin Nudge @ 1100.00ft
1,300.00	1,299.84	4.10	5.64	Nudge Rate = 2.00/100ft
1,495.57	1,494.31	16.03	22.06	End Nudge @ 1495.57ft
4,000.00	3,974.91	218.70	300.90	Hold Angle @ 7.91
6,695.77	6,645.02	436.85	601.04	Begin Build @ 6695.77ft
7,000.00	6,938.68	381.70	634.53	Build Rate = 10.00/100ft
7,648.97	7,260.00	-141.00	674.00	End Build @ 7648.97ft
10,000.00	7,230.75	-2,491.83	685.05	Hold Angle @ 90.71
12,231.13	7,203.00	-4,722.76	695.53	Total Depth @ 12231.14ft

Plan Report for Morning Fresh 36N-22HZ - Plan A Rev 0 Permit

Vertical Section Information

Angle Type	Target	Azimuth (°)	Origin Type	Origin +N/_S (ft)	Origin +E/-W (ft)	Start TVD (ft)
Target	Morning Fresh 36N-22HZ_BHL	171.62	Slot	0.00	0.00	0.00

Survey tool program

From (ft)	To (ft)	Survey/Plan	Survey Tool
0.00	12,231.14	Plan A Rev 0 Permit	MWD

Casing Details

Measured Depth (ft)	Vertical Depth (ft)	Name	Casing Diameter (")	Hole Diameter (")
7,648.97	7,260.00	7" Intermediate Casing	7	8-3/4

Formation Details

Measured Depth (ft)	Vertical Depth (ft)	Name	Lithology	Dip (°)	Dip Direction (°)
750.00	750.00	Fox Hills		0.00	
3,997.06	3,972.00	Parkman		0.00	
4,494.80	4,465.00	Sussex		0.00	
7,124.06	7,043.00	Sharon Springs		0.00	
7,208.71	7,105.00	Niobrara A		0.00	
7,277.86	7,149.00	Niobrara B		0.00	
7,518.91	7,247.00	Niobrara C		0.00	
7,648.97	7,260.00	Niobrara C TL (Heel)		0.00	
12,231.13	7,203.00	Niobrara C TL (Toe)		0.00	

Targets associated with this wellbore

Target Name	TVD (ft)	+N/-S (ft)	+E/-W (ft)	Shape
Morning Fresh 36N-22HZ_BHL	7,203.00	-4,722.76	695.53	Point
Morning Fresh 36N-22HZ_Section Lines	0.00	0.00	0.00	Polygon
Morning Fresh 36N-22HZ_SHL	0.00	0.00	0.00	Point
Morning Fresh 36N-22HZ_Casing Point	7,260.00	-141.00	674.00	Point
Morning Fresh 36N-22HZ_Setback Lines	0.00	0.00	0.00	Polygon

North Reference Sheet for Sec. 22-T3N-R66W - Morning Fresh 36N-22HZ - Plan A Rev 0

All data is in US Feet unless otherwise stated. Directions and Coordinates are relative to True North Reference.

Vertical Depths are relative to RKB=17 @ 4902.00ft (Drilling Rig). Northing and Easting are relative to Morning Fresh 36N-22HZ

Coordinate System is US State Plane 1983, Colorado Northern Zone using datum North American Datum 1983, ellipsoid GRS 1980

Projection method is Lambert Conformal Conic (2 parallel)

Central Meridian is -105.50°, Longitude Origin:0.000000°, Latitude Origin:40.783333°

False Easting: 3,000,000.00ft, False Northing: 1,000,000.00ft, Scale Reduction: 0.99995702

Grid Coordinates of Well: 1,322,555.90 ft N, 3,205,006.95 ft E

Geographical Coordinates of Well: 40° 12' 59.34" N, 104° 45' 57.22" W

Grid Convergence at Surface is: 0.47°

Based upon Minimum Curvature type calculations, at a Measured Depth of 12,231.14ft
the Bottom Hole Displacement is 4,773.70ft in the Direction of 171.62° (True).

Magnetic Convergence at surface is: -8.25° (20 September 2012, , BGGM2012)

