

The Road to Excellence Starts with Safety

Sold To #: 300721	Ship To #: 2932370	Quote #:	Sales Order #: 9582118
Customer: WPX ENERGY ROCKY MOUNTAIN LLC-EBUS	Customer Rep: Hartl, Al		
Well Name: RWF	Well #: 22-35	API/UWI #: 05-045-20459	
Field: RULISON	City (SAP): RIFLE	County/Parish: Garfield	State: Colorado
Lat: N 39.483 deg. OR N 39 deg. 29 min. 0.308 secs.	Long: W 107.863 deg. OR W -108 deg. 8 min. 13.639 secs.		
Contractor: NABORS 576	Rig/Platform Name/Num: NABORS 576		
Job Purpose: Cement Surface Casing			
Well Type: Development Well	Job Type: Cement Surface Casing		
Sales Person: MAYO, MARK	Srv Supervisor: KUKUS, CRAIG	MBU ID Emp #: 369124	

Job Personnel

HES Emp Name	Exp Hrs	Emp #	HES Emp Name	Exp Hrs	Emp #	HES Emp Name	Exp Hrs	Emp #
ANDERSON, ADAM S	4	456683	KUKUS, CRAIG A	4	369124	LAULAINEN, ROGER Edward	4	524413
LYNGSTAD, FREDRICK D	2	403742	MILLER II, MATTHEW Reginald	4	425164			

Equipment

HES Unit #	Distance-1 way	HES Unit #	Distance-1 way	HES Unit #	Distance-1 way	HES Unit #	Distance-1 way
10025118	60 mile	10248057	60 mile	10551730C	60 mile	10867094	60 mile
10897925	60 mile	11360881	60 mile	11583928	60 mile	11808845	60 mile
4844	60 mile						

Job Hours

Date	On Location Hours	Operating Hours	Date	On Location Hours	Operating Hours	Date	On Location Hours	Operating Hours
6/26/12	4	2						

TOTAL Total is the sum of each column separately

Job

Formation Name	Top	Bottom	Called Out	Date	Time	Time Zone
Formation Depth (MD)			On Location	25 - Jun - 2012	23:30	MST
Form Type		BHST	Job Started	26 - Jun - 2012	03:30	MST
Job depth MD	1145. m	Job Depth TVD	Job Completed	26 - Jun - 2012	04:37	MST
Water Depth		Wk Ht Above Floor	Departed Loc	26 - Jun - 2012	05:37	MST
Perforation Depth (MD)	From	To		26 - Jun - 2012	07:20	MST

Well Data

Description	New / Used	Max pressure MPa	Size mm	ID mm	Weight kg/m	Thread	Grade	Top MD m	Bottom MD m	Top TVD m	Bottom TVD m
-------------	------------	------------------	---------	-------	-------------	--------	-------	----------	-------------	-----------	--------------

Sales/Rental/3rd Party (HES)

Description	Qty	Qty uom	Depth	Supplier
PLUG,CMTG,TOP,9 5/8,HWE,8.16 MIN/9.06 MA	1	EA		

Tools and Accessories

Type	Size	Qty	Make	Depth	Type	Size	Qty	Make	Depth	Type	Size	Qty	Make
Guide Shoe					Packer					Top Plug	9 5/8	1	HES
Float Shoe					Bridge Plug					Bottom Plug			
Float Collar					Retainer					SSR plug set			
Insert Float										Plug Container	9 5/8	1	HES
Stage Tool										Centralizers			

Miscellaneous Materials

Gelling Agt	Conc	Surfactant	Conc	Acid Type	Qty	Conc	%
Treatment Fld	Conc	Inhibitor	Conc	Sand Type	Size		

Fluid Data

Stage/Plug #: 1	Fluid #	Stage Type	Fluid Name	Qty	Qty bbl	Mixing Density kg/m3	Yield cu/ft	Mix Fluid m3/ tonne	Rate bbl/min	Total Mix Fluid m3/ tonne
-----------------	---------	------------	------------	-----	---------	----------------------	-------------	---------------------	--------------	---------------------------

HALLIBURTON***Cementing Job Summary***

1	Fresh Water		20.00	bbl	8.33	.0	.0	4	
2	VersaCem Lead	VERSACEM (TM) SYSTEM (452010)	190.0	sacks	12.3	2.38	13.75	6,5	13.75
	13.75 Gal	FRESH WATER							
3	VersaCem Tail	VERSACEM (TM) SYSTEM (452010)	190.0	sacks	12.8	2.11	11.75	7	11.75
	11.75 Gal	FRESH WATER							
4	Displacement Fluid		80.00	bbl	8.34	.0	.0	10	
5	HalCem TopOut	HALCEM (TM) SYSTEM (452986)		sacks	15.8	1.15	5.0		5.0
	5 Gal	FRESH WATER							
Calculated Values		Pressures		Volumes					
Displacement	80	Shut In: Instant		Lost Returns	0	Cement Slurry	152	Pad	
Top Of Cement	SURFACE	5 Min		Cement Returns	35	Actual Displacement	81	Treatment	
Frac Gradient		15 Min		Spacers	20	Load and Breakdown		Total Job	252
Rates									
Circulating	RIG	Mixing	7	Displacement	10	Avg. Job	8		
Cement Left In Pipe	Amount	44 ft	Reason	Shoe Joint					
Frac Ring # 1 @	ID	Frac ring # 2 @	ID	Frac Ring # 3 @	ID	Frac Ring # 4 @	ID		
The Information Stated Herein Is Correct				Customer Representative Signature					

The Road to Excellence Starts with Safety

Sold To #: 300721	Ship To #: 2932370	Quote #:	Sales Order #: 9582118
Customer: WPX ENERGY ROCKY MOUNTAIN LLC-EBUS	Customer Rep: Hartl, Al		
Well Name: RWF	Well #: 22-35	API/UWI #: 05-045-20459	
Field: RULISON	City (SAP): RIFLE	County/Parish: Garfield	State: Colorado
Legal Description:			
Lat: N 39.483 deg. OR N 39 deg. 29 min. 0.308 secs.		Long: W 107.863 deg. OR W -108 deg. 8 min. 13.639 secs.	
Contractor: NABORS 576	Rig/Platform Name/Num: NABORS 576		
Job Purpose: Cement Surface Casing	Ticket Amount:		
Well Type: Development Well	Job Type: Cement Surface Casing		
Sales Person: MAYO, MARK	Srv Supervisor: KUKUS, CRAIG	MBU ID Emp #: 369124	

Activity Description	Date/Time	Cht #	Rate BBL/min	Volume BBL		Pressure Psi		Comments
				Stage	Total	Tubing	Casing	
Call Out	06/25/2012 23:30							
Depart Yard Safety Meeting	06/26/2012 01:30							SAFETY MEETING INVOLVING THE ENTIRE CMT CREW
Arrive At Loc	06/26/2012 03:30							RIG JUST LANDED / CIRCULATING LANDING JT DOWN
Circulate Well	06/26/2012 03:35							RIG
Assessment Of Location Safety Meeting	06/26/2012 03:40							ASSESSMENT OF LOCATION INVOLVING THE ENTIRE CMT CREW
Pre-Rig Up Safety Meeting	06/26/2012 03:50							SAFETY MEETING INVOLVING THE ENTIRE CMT CREW
Rig-Up Equipment	06/26/2012 04:00							RIG UP TO STAND PIPE AND WATER TO UP RIGHT AND DAY TANK / RIG UP FLOOR
Pre-Job Safety Meeting	06/26/2012 04:15							SAFETY MEETING INVOLVING EVERYONE ON LOCATION
Start Job	06/26/2012 04:37							TD 1145 FT TP 1098 FT SJ 44 FT PIPE 9 5/8 IN 40# MUD WT 9.2 # OH 13 1/2 IN
Other	06/26/2012 04:37		2	2			70.0	FILL LINES WITH FRESH WATER
Pressure Test	06/26/2012 04:39		0.5			4100.0		PRESSURE TEST GOOD
Pump Spacer 1	06/26/2012 04:44		4	20			138.0	FRESH WATER SPACER

Sold To # : 300721

Ship To # :2932370

Quote # :

Sales Order # : 9582118

SUMMIT Version: 7.3.0030

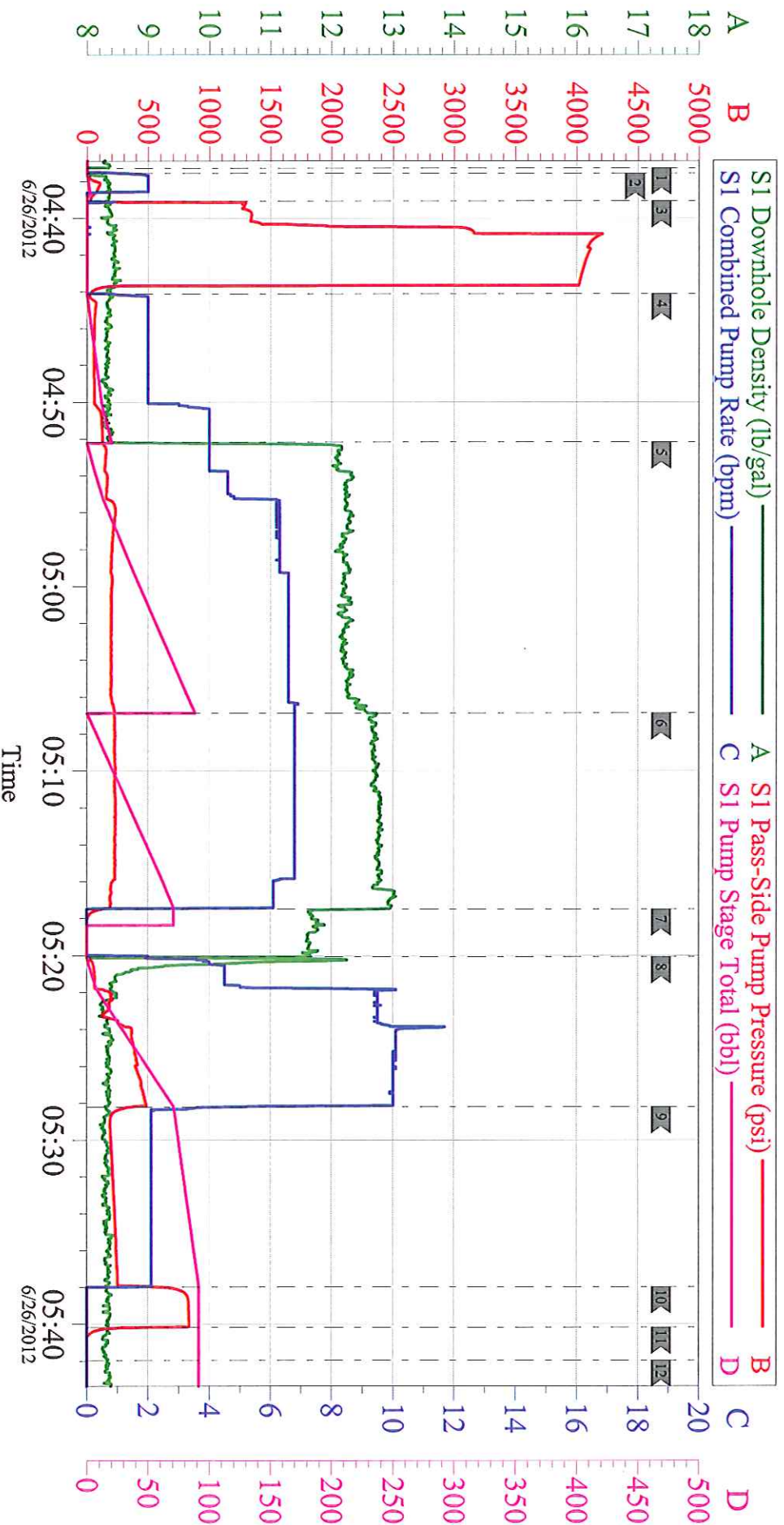
Tuesday, June 26, 2012 07:06:00

Cementing Job Log

Activity Description	Date/Time	Cht #	Rate m3/ min	Volume m3		Pressure MPa		Comments
				Stage	Total	Tubing	Casing	
Pump Lead Cement	06/26/2012 04:52		6.6	80.5			240.0	PUMP 190 SKS LEAD CEMENT AT 12.3 PPG 2.38 Y 13.75 GAL/SKS
Pump Tail Cement	06/26/2012 05:06		7	71			245.0	PUMP 190 SKS TAIL CEMENT AT 12.8 PPG 2.11 Y 11.75 GAL/SKS
Shutdown	06/26/2012 05:17							SHUT DOWN / READY TUB TO WASH UP ON TOP OF PLUG
Drop Top Plug	06/26/2012 05:17							PLUG LEFT THE PLUG CONTAINER
Pump Displacement	06/26/2012 05:20		10	79.9			520.0	PUMP H20 DISPLACEMENT
Slow Rate	06/26/2012 05:28		2	70			240.0	SLOW RATE LAST 10 BBLs
Bump Plug	06/26/2012 05:37		2	80			850.0	PLUG LANDED AT 270 PSI
Check Floats	06/26/2012 05:40							FLOATS HELD / GOT 1 BBL BACK TO TANKS
End Job	06/26/2012 05:41							HAD GOOD RETURNS THRU OUT THE JOB / CEMENT TO SURFACE TOTAL 35 BBLs
Pre-Rig Down Safety Meeting	06/26/2012 05:45							SAFETY MEETING INVOLVING THE ENTIRE CMT CREW
Rig-Down Equipment	06/26/2012 06:00							RIG DOWN EQUIP / WOC TO SEE IF IT FALLS BACK / 07:00 CEMENT DID NOT FALL BACK
Safety Meeting - Departing Location	06/26/2012 07:15							SAFETY MEETING INVOLVING THE ENTIRE CMT CREW
Comment	06/26/2012 07:30							THANK YOU FOR USING HALLIBURTON, CRAIG KUKUS AND CREW

WPX ENERGY ROCKY MOUNTAIN RWF 22-35

NABORS 576 SURFACE 9.625



Customer: **WPX**
 Well Description: **RWF 22-35**
 Company Rep: **AL HARTL**

Job Date: **26-Jun-2012**
 Job Type: **SURFACE**
 Cement Supervisor: **CRAIG KUKUS**

Sales Order #: **9582118**
 ADC Used: **YES**
 Elite #/Operator: **E-2 ADAM ANDERSON**

HALLIBURTON
 OptiCem v6.4.8
 26-Jun-12 06:04