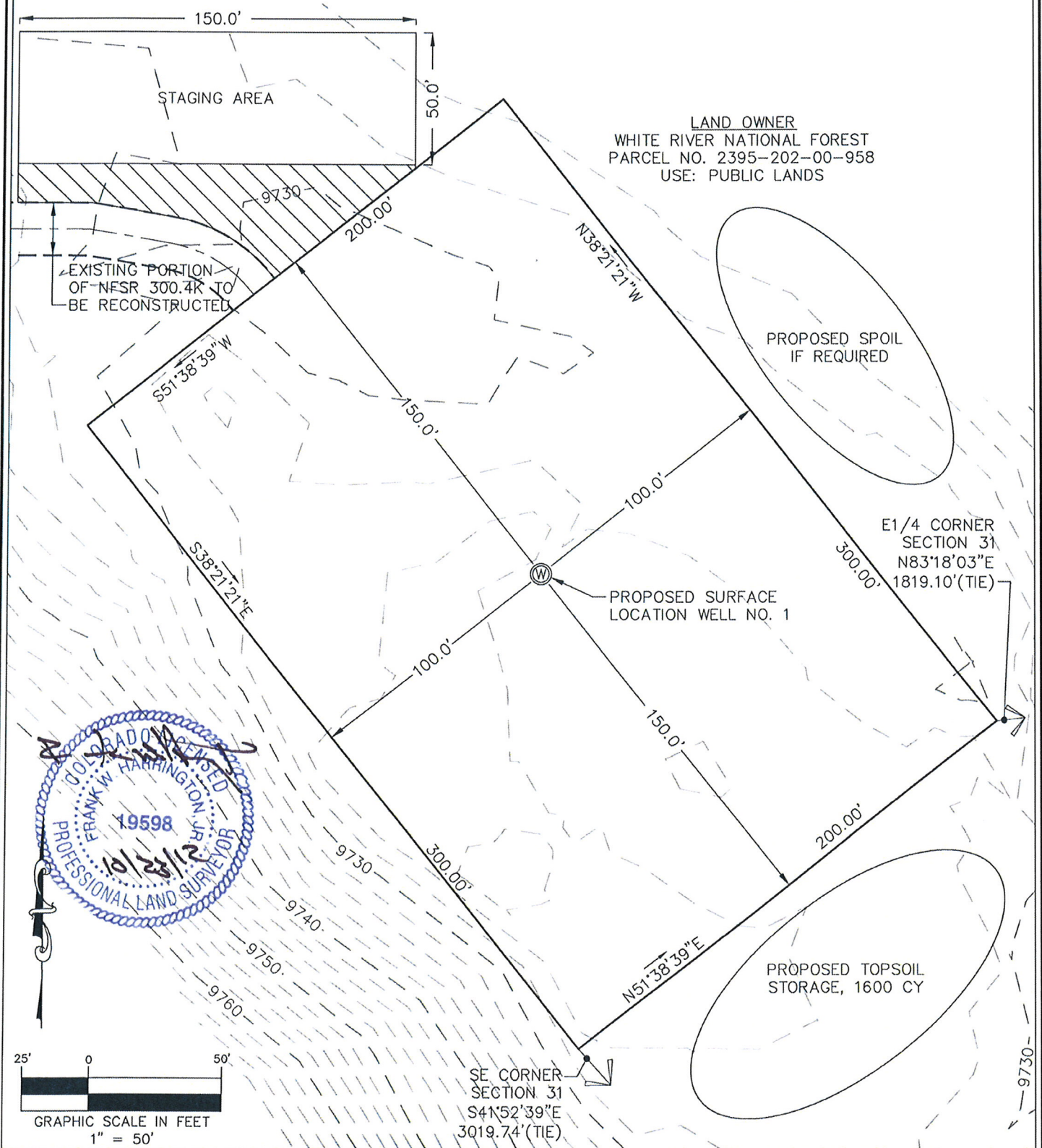


FEDERAL 8-89-31 #1

SE 1/4 OF SECTION 31, TOWNSHIP 8 SOUTH, RANGE 89 WEST OF THE 6TH P.M.



HIGH COUNTRY ENGINEERING, INC.



1517 BLAKE AVENUE, STE 101
GLENWOOD SPRINGS, CO 81601
PHONE (970) 945-8676
FAX (970) 945-2555

WWW.HCENG.COM

DRAWN BY:
RPK

CHECKED BY:
FWH

DATE:
SEPTEMBER 6, 2012

FILE:
J:/SDSKPROJ/212/1655-02/DWG/1655.02.DWG

SCALE:
1" = 50'

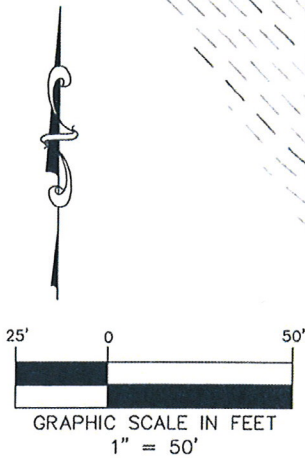
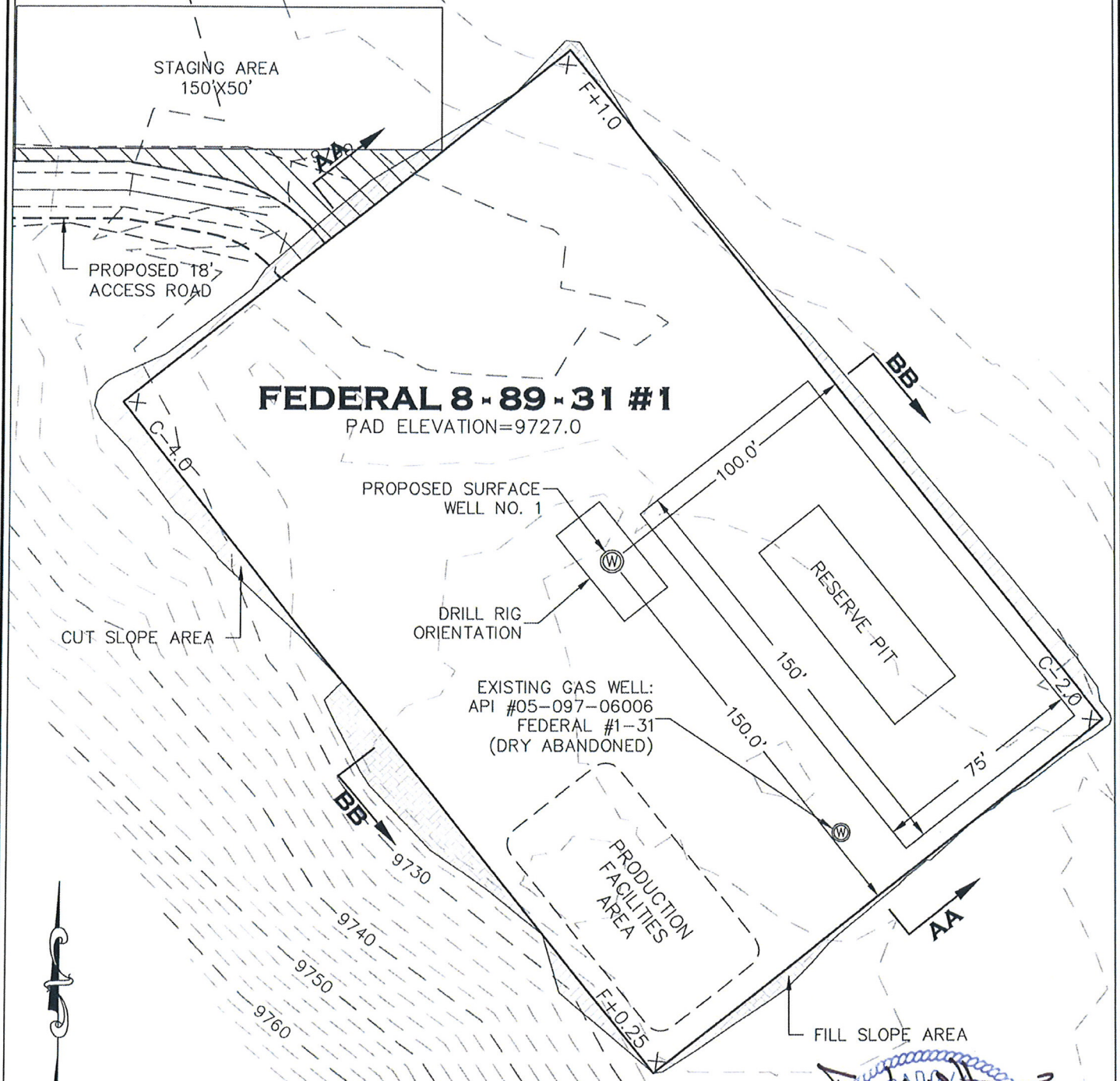
PROJECT NO:
2121655.02

WELL LOCATION PLAT
PREPARED FOR: SG INTERESTS I, LTD.

FEDERAL 8-89-31 #1
WELL SITE LAYOUT

FEDERAL 8-89-31 #1

SE 1/4 OF SECTION 31, TOWNSHIP 8 SOUTH, RANGE 89 WEST OF THE 6TH P.M.



DISTURBANCE AREA TABLE		
ITEM	ACREAGE	TOTAL
PAD AND CUT/FILL AREA	1.48	1.79 Acres
ACCESS ROAD	0.10	
STAGING AREA	0.21	



HIGH COUNTRY ENGINEERING, INC.



1517 BLAKE AVENUE, STE 101
GLENWOOD SPRINGS, CO 81601
PHONE (970) 945-8676
FAX (970) 945-2555
WWW.HCENG.COM

DRAWN BY: RPK
CHECKED BY: FWH
DATE: SEPTEMBER 6, 2012
FILE: J:/SDSKPROJ/212/1655-02/DWG/1655.02.DWG

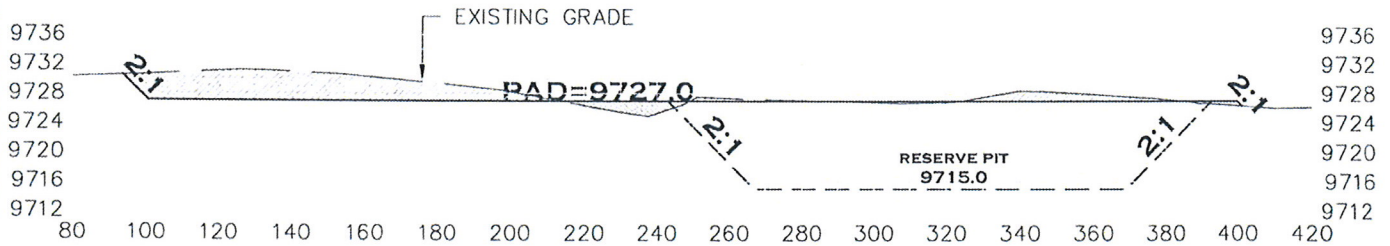
SCALE: N/A
PROJECT No: 2121655.02

WELL LOCATION PLAT
PREPARED FOR: SG INTERESTS I, LTD.

FEDERAL 8-89-31 #1
FACILITIES & CONSTRUCTION LAYOUT

FEDERAL 8-89-31 #1

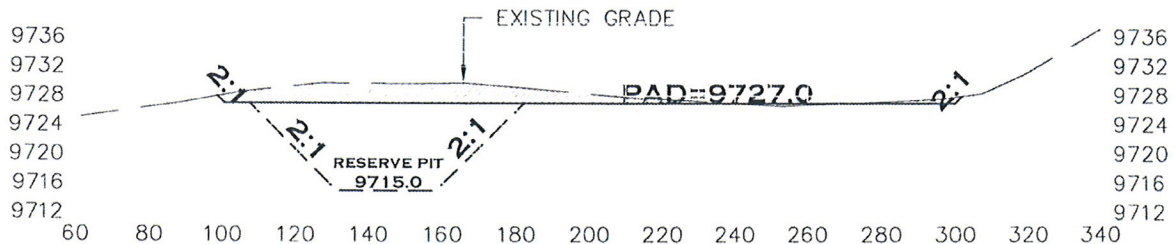
SE1/4 OF SECTION 31, TOWNSHIP 8 SOUTH, RANGE 89 WEST OF THE 6TH P.M.



CROSS SECTION A-A

HORZ: 1" = 50'

VERT: 1" = 25'



CROSS SECTION B-B

HORZ: 1" = 50'

VERT: 1" = 25'

ESTIMATED EARTHWORK VOLUME SUMMARY

CUT = 4,235 CUBIC YARDS

FILL = 1,408 CUBIC YARDS

TOPSOIL = 1,600 CUBIC YARDS (8" TOPSOIL)

NET = 2,827 CUBIC YARDS (CUT)

NOTE:

EARTHWORK QUANTITIES ASSUME 10% COMPACTION.



HIGH COUNTRY ENGINEERING, INC.



1517 BLAKE AVENUE, STE 101
GLENWOOD SPRINGS, CO 81601
PHONE (970) 945-8676
FAX (970) 945-2555
WWW.HCENG.COM

DRAWN BY: RPK
CHECKED BY: FWH
DATE: SEPTEMBER 6, 2012
FILE: J:/SDSKPROJ/212/1655-02/DWG/1655.02.DWG

WELL LOCATION PLAT PREPARED FOR: SG INTERESTS I, LTD.

FEDERAL 8-89-31 #1
DRILL PAD CROSS SECTIONS