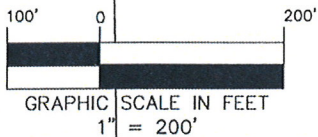
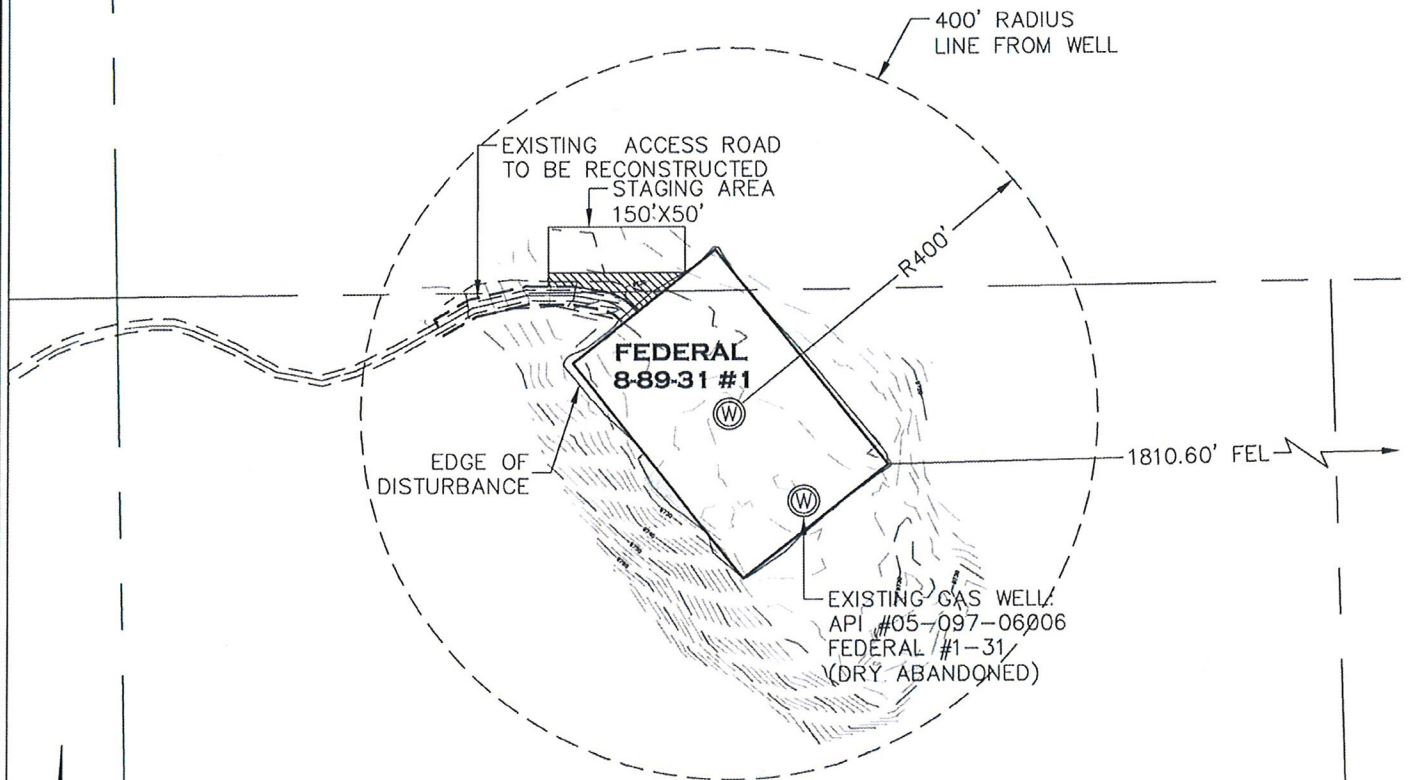


FEDERAL 8-89-31 #1

SE1/4 OF SECTION 31, TOWNSHIP 8 SOUTH, RANGE 89 WEST OF THE 6TH P.M.

LAND OWNER
WHITE RIVER NATIONAL FOREST
PARCEL NO. 2395-202-00-958
USE: PUBLIC LANDS



HIGH COUNTRY ENGINEERING, INC.



1517 BLAKE AVENUE, STE 101
GLENWOOD SPRINGS, CO 81601
PHONE (970) 945-8676
FAX (970) 945-2555
WWW.HCENG.COM

DRAWN BY: RPK	SCALE: 1" = 200'
CHECKED BY: FWH	PROJECT NO: 2121655.02
DATE: SEPTEMBER 6, 2012	
FILE: J:/SDSKPROJ/212/1655-02/DWG/1655.02.DWG	

WELL LOCATION PLAT PREPARED FOR: **SG INTERESTS I, LTD.**

**FEDERAL 8-89-31 #1
LOCATION DRAWING**