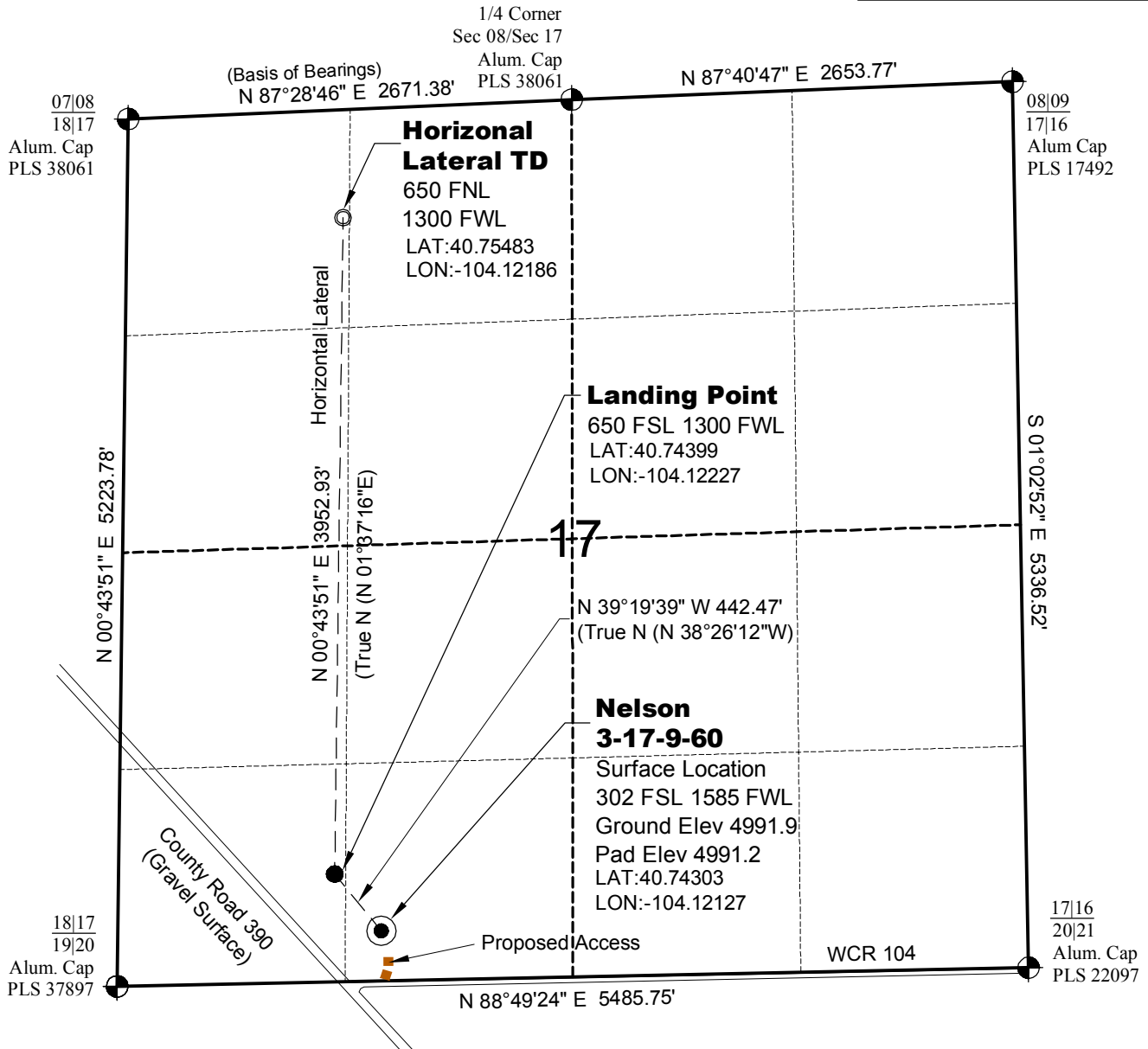


# WELL LOCATION MAP

**NELSON  
2-17-9-60 PAD**



## SURVEYOR'S STATEMENT

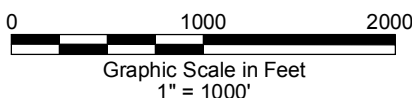
The undersigned hereby states that the well location shown hereon was staked on the ground based on existing monumentation and/or physical evidence found in the field and is correct to the best of my knowledge, information and belief.

## NOTES

- 1.) Horizontal coordinates based on NGS control point "SNOW" and vertical datum based on NGS control point "G 209" with an elevation of 4955.32. NAVD 1988.
- 2.) All directions, distances, and dimensions shown hereon are based on coordinates from the "Colorado coordinate system of 1983 north zone" (article 52 of title 38, C.R.S.).
- 3.) All section line dimensions shown hereon are based on field measurements of existing monuments and/or physical evidence found in the field unless otherwise indicated.
- 4.) Physical features shown hereon are for graphical representation only.
- 5.) See Form 2A for visible improvements within 400' of wellhead.
- 6.) Distances to nearest section lines are measured perpendicularly.
- 7.) This is not a land survey nor land survey plat.
- 8.) Date of Survey 11/7/12; Date of Drawing 12/12/12. REV 0  
PDOP Reading: 1.9 Instrument Operator: Marc Woodard



North



**CARRIZO NIOBRARA LLC  
NELSON 3-17-9-60**

**SL SE1/4 SW1/4 SEC. 17 T9N R60W  
HL TD NW1/4 NW1/4 SEC. 17 T9N R60W  
6th PM WELD COUNTY COLORADO**