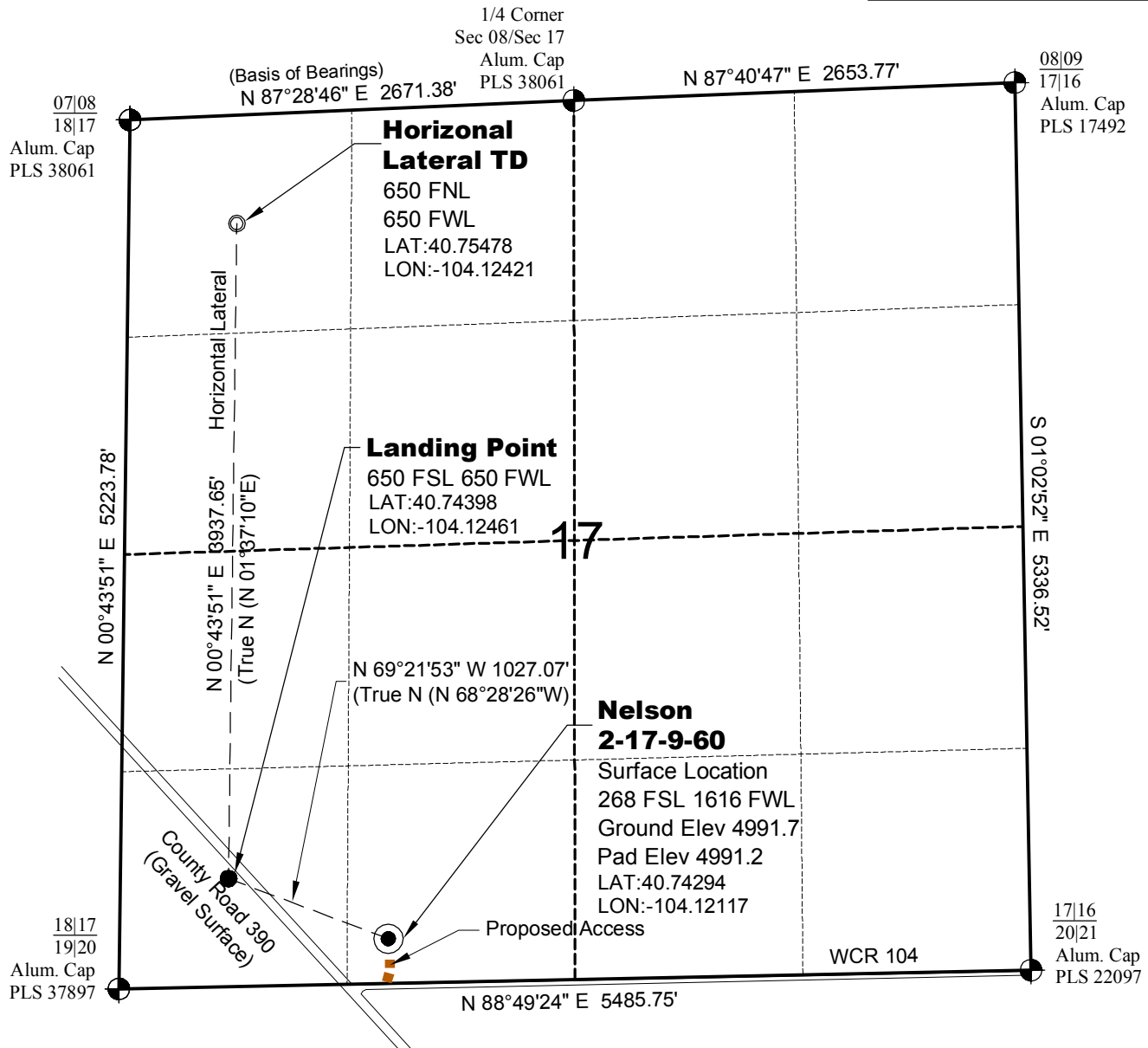


WELL LOCATION MAP

NELSON
2-17-9-60 PAD

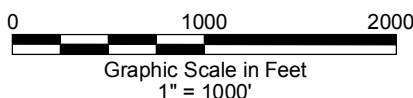


SURVEYOR'S STATEMENT

The undersigned hereby states that the well location shown hereon was staked on the ground based on existing monumentation and/or physical evidence found in the field and is correct to the best of my knowledge, information and belief.

NOTES

- 1.) Horizontal coordinates based on NGS control point "SNOW" and vertical datum based on NGS control point "G 209" with an elevation of 4955.32. NAVD 1988.
 - 2.) All directions, distances, and dimensions shown hereon are based on coordinates from the "Colorado coordinate system of 1983 north zone" (article 52 of title 38, C.R.S.).
 - 3.) All section line dimensions shown hereon are based on field measurements of existing monuments and/or physical evidence found in the field unless otherwise indicated.
 - 4.) Physical features shown hereon are for graphical representation only.
 - 5.) See Form 2A for visible improvements within 400' of wellhead.
 - 6.) Distances to nearest section lines are measured perpendicularly.
 - 7.) This is not a land survey nor land survey plat.
 - 8.) Date of Survey 11/7/12; Date of Drawing 12/12/12. REV 0
- PDOP Reading: 1.9 Instrument Operator: Marc Woodard



CARRIZO NIORBARA LLC
NELSON 2-17-9-60

SL SE1/4 SW1/4 SEC. 17 T9N R60W
HL TD NW1/4 NW1/4 SEC. 17 T9N R60W
6th PM WELD COUNTY COLORADO