

REFERENCE PHOTOS
Nelson 2-17-9-60 Pad

Reference Location

SE1/4 SW1/4 Sec. 17 Twn. 9N Rng. 60W 6th PM

Lat: 40.74491 Long: -104.12077

Carrizo Niobrara LLC

Weld County, CO

Date of Pictures: 11/7/2012



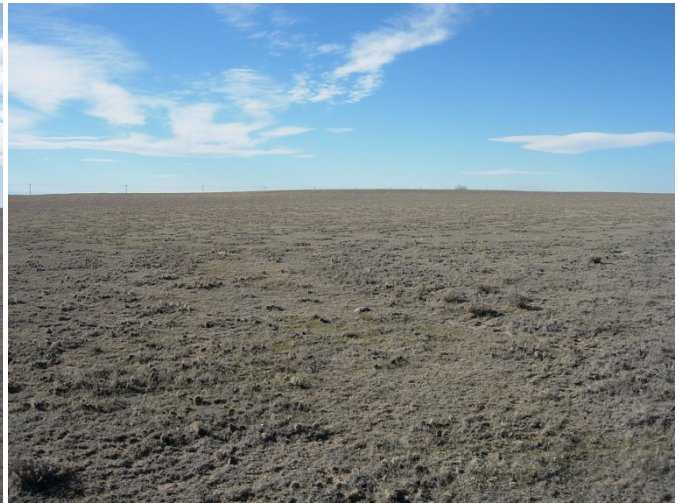
NORTH



EAST



SOUTH



WEST



GEOSURV Inc. 520 Stacy CT Suite B Lafayette CO 80026 ph 303 666 0379 fx 303 665 6320

G:\GEOSURV\WeldzNorth\Carrizo 110004\Wellplats\Nelson 2-17-9-60\Carrizo Nelson 11-7-12\Nelson 2-17-9-60 Ref Photos.docx 12/12/2012 11:42:00 AM