

**LEGEND:**

PROPOSED LOCATION



**Encana OIL & GAS (USA) INC.**

**WELL PAD F17 595**

**SECTION 17, T5S, R95W, 6th P.M.**

**SE 1/4 NW 1/4**

**SHEET 8 of 11**



**Uintah Engineering & Land Surveying**  
 85 South 200 East Vernal, Utah 84078  
 (435) 789-1017 \* FAX (435) 789-1813

**ACCESS ROAD  
MAP**

**09 24 10**  
 MONTH DAY YEAR

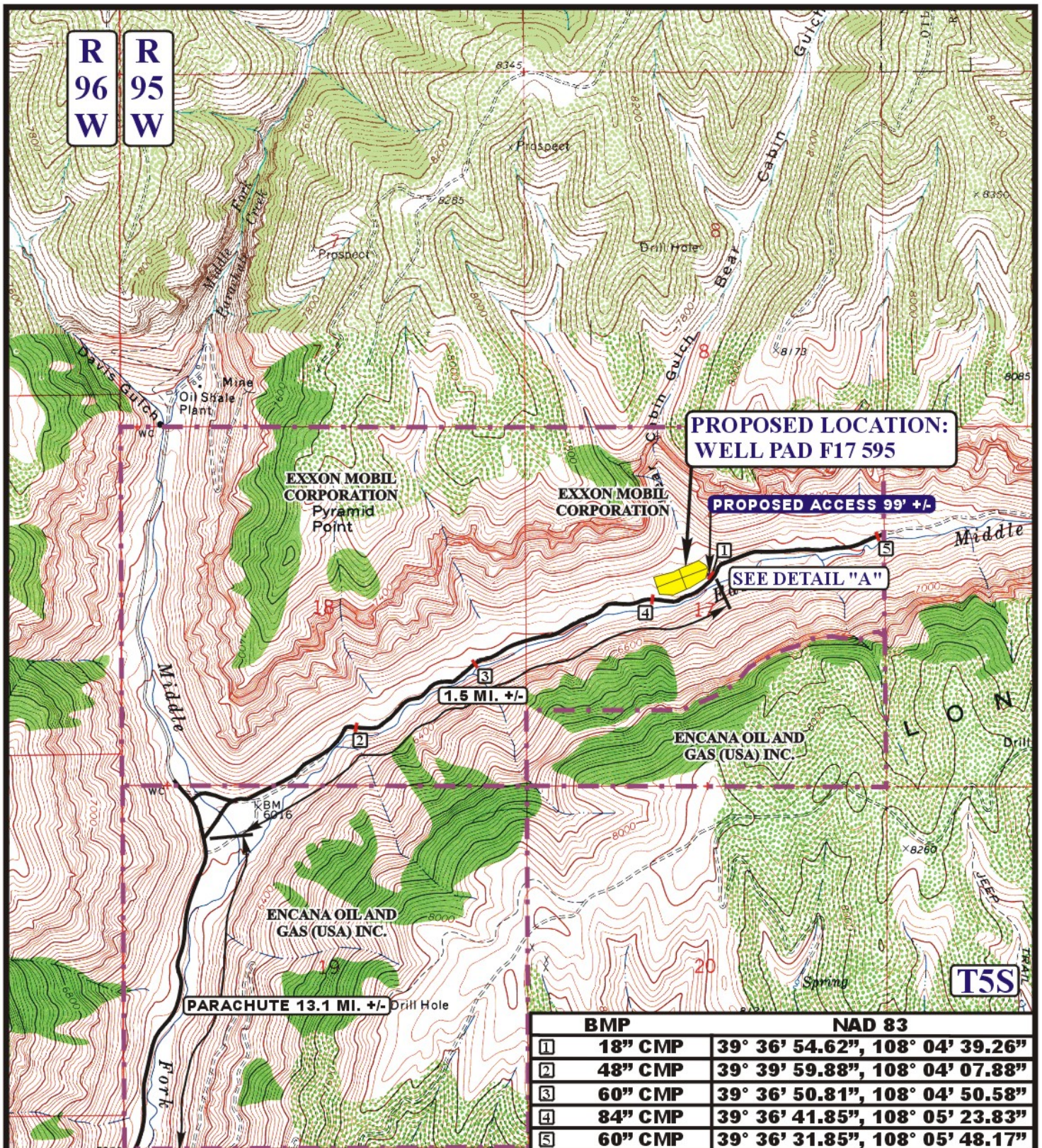
SCALE: 1:100,000

DRAWN BY: Z.L.

REVISED: 00-00-00







**PROPOSED LOCATION:  
WELL PAD F17 595**

**PROPOSED ACCESS 99' +/-**

**SEE DETAIL "A"**

**1.5 MI. +/-**

**PARACHUTE 13.1 MI. +/-**

**Drill Hole**

| BMP |         | NAD 83                          |
|-----|---------|---------------------------------|
| 1   | 18" CMP | 39° 36' 54.62", 108° 04' 39.26" |
| 2   | 48" CMP | 39° 39' 59.88", 108° 04' 07.88" |
| 3   | 60" CMP | 39° 36' 50.81", 108° 04' 50.58" |
| 4   | 84" CMP | 39° 36' 41.85", 108° 05' 23.83" |
| 5   | 60" CMP | 39° 36' 31.85", 108° 05' 48.17" |

# **LEGEND:**

- EXISTING ROAD
- PROPOSED ACCESS ROAD



**Encana OIL & GAS (USA) INC.**

**WELL PAD F17 595**

**SECTION 17, T5S, R95W, 6th P.M.**

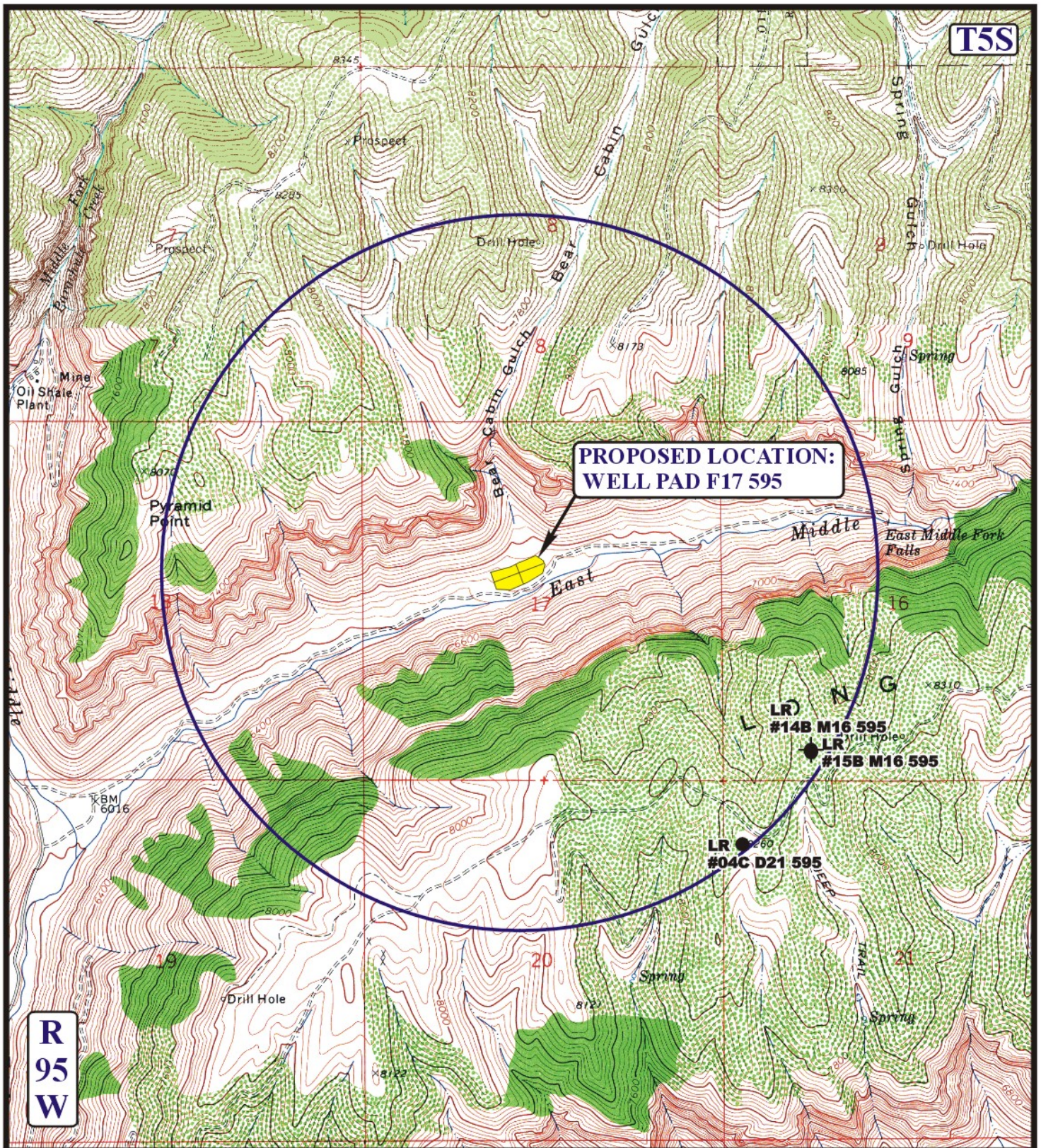
**SE 1/4 NW 1/4**

**SHEET 9 of 11**

**U E I S** Uintah Engineering & Land Surveying  
85 South 200 East Vernal, Utah 84078  
(435) 789-1017 \* FAX (435) 789-1813

**ACCESS ROAD** **09 24 10** **B**  
**MAP** **MONTH DAY YEAR** **TOPO**  
SCALE: 1" = 2000' DRAWN BY: Z.L. REVISED: 00-00-00





# **LEGEND:**

- |                   |                         |
|-------------------|-------------------------|
| ⊗ DISPOSAL WELLS  | ⊗ WATER WELLS           |
| ● PRODUCING WELLS | ● ABANDONED WELLS       |
| ● SHUT IN WELLS   | ● TEMPORARILY ABANDONED |



**Uintah Engineering & Land Surveying**  
 85 South 200 East Vernal, Utah 84078  
 (435) 789-1017 \* FAX (435) 789-1813



**Encana OIL & GAS (USA) INC.**

**WELL PAD F17 595**  
**SECTION 17, T5S, R95W, 6th P.M.**  
**SE 1/4 NW 1/4** SHEET 10 of 11

**TOPOGRAPHIC**  
**MAP**

**09 24 10**  
 MONTH DAY YEAR

SCALE: 1" = 2000' DRAWN BY: Z.L. REVISED: 00-00-00





