

SECTION BREAKDOWN T4S, R64W, 6th P.M.

2000 Alum. Cap
1.5 Below Ground
LS 7361
Lot: 39.723803"
Long: 104.508419"

2003 Alum. Cap,
1.0 Below Ground,
LS 23524
Lot: 39.723644"
Long: 104.499014"

R 64
R 63
W W

Well location, WALKER #12-1H, located as shown in the SE 1/4 SE 1/4 of Section 12, T4S, R64W, 6th P.m. Arapahoe County, Colorado.

ConocoPhillips Company

BASIS OF ELEVATION

BENCHMARK 374 LOCATED ON THE SECTION LINE BETWEEN SECTIONS 12 & 13, T5S, R64W, 6th. P.M., TAKEN FROM 1988 PUBLISHED DATUM BY THE UNITED STATES DEPARTMENT OF THE INTERIOR, GEOLOGICAL SURVEY AS BEING 6054.61 FEET.

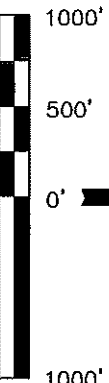
BASIS OF BEARINGS

BASIS OF BEARINGS IS A G.P.S. OBSERVATION.

ACREAGES		
LEASE	OWNER	ACRES
A	BARBER VENTURES, LLC	56.86
B	JOHN D. JORDAN & PATRICA JORDAN	39.09
C	RAYMOND L. WALKER	39.00
D	DAN R. GUERNSEY & GIOANN Y. GUERNSEY	40.00
E	MAX A. CAMPFIELD & AUDREY L. CAMPFIELD	1.00
F	KIMBALL L. JORDAN, SR	99.29
TOTAL GROSS ACRES		275.24

2012 UELS Alum. Cap,
0.5 Below Ground,
LS 28285
Lot: 39.716222"
Long: 104.489758"

SCALE



NOTE:
SEE ADDENDUM TO LEGAL PLAT FOR
EXISTING IMPROVEMENTS WITHIN 400'
OF THE PROPOSED DISTURBANCE.

CERTIFICATE

THIS IS TO CERTIFY THAT THE ABOVE PLAT WAS PREPARED FROM
FIELD NOTES OF ACTUAL SURVEYS MADE BY ME OR UNDER MY
SUPERVISION AND THAT THE SAME ARE TRUE AND CORRECT TO THE
BEST OF MY KNOWLEDGE AND BELIEF.

REGISTERED LAND SURVEYOR
REGISTRATION NO. 14500
STATE OF COLORADO
09-11-12

LEASE E REV. 07-11-12 J.W.

UNTIAH ENGINEERING & LAND SURVEYING
85 SOUTH 200 EAST - VERNAL, UTAH 84078
(435) 789-1017

SCALE
1" = 1000'

DATE SURVEYED: 06-11-12 DATE DRAWN: 06-18-12

PARTY J.H. C.M. B.L.B.

REFERENCES G.L.O. PLAT

WEATHER WARM

FILE ConocoPhillips Company

2012 UELS Alum. Cap
0.5 High, LS 28285
Lot: 39.709397"
Long: 104.508647"

1996 Alum. Cap,
LS 13895
Lot: 39.709186"
Long: 104.499278"

1996 Alum. Cap,
LS 13895
Lot: 39.709081"
Long: 104.494594"

1996 Alum. Cap,
0.6 Below Ground,
LS 13895
Lot: 39.708925"
Long: 104.489911"

PDOP = 1.5

LEGEND:

— = 90° SYMBOL

● = PROPOSED WELL HEAD.

▲ = SECTION CORNERS LOCATED.

LEASE A

39.8 AC

39.8 AC

LEASE D

39.9 AC

LEASE F

39.9 AC

LEASE B

39.9 AC

SURFACE
LOCATION
660' FSL
250' FEL
39.0 AC

LEASE C

39.0 AC

LEASE E

1.0 AC

WELL LOCATION

T4S, R64W, 6th P.M.

ConocoPhillips Company

Well location, WALKER #12-1H, located as shown in the SE 1/4 SE 1/4 of Section 12, T4S, R64W, 6th P.M. Arapahoe County, Colorado.

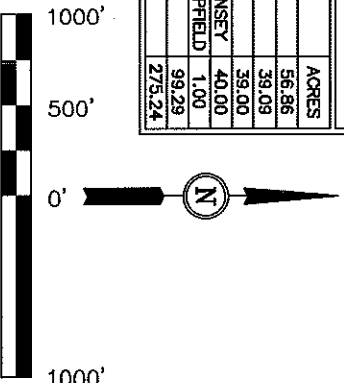
BASIS OF ELEVATION

BENCHMARK 374 LOCATED ON THE SECTION LINE BETWEEN SECTIONS 12 & 13, T5S, R64W, 6th. P.M., TAKEN FROM 1988 PUBLISHED DATUM BY THE UNITED STATES DEPARTMENT OF THE INTERIOR, GEOLOGICAL SURVEY AS BEING 6054.61 FEET.

BASIS OF BEARINGS

BASIS OF BEARINGS IS A G.P.S. OBSERVATION.

ACREAGES		
LEASE	OWNER	ACRES
A	BARBER VENTURES, LLC	56.86
B	JOHN D. JORDAN & PATRICA JORDAN	39.09
C	RAYMOND L. WALKER	39.00
D	DAN R. GUERNSEY & GIOANN Y. GUERNSEY	40.00
E	MAX A. CAMPFIELD & AUDREY L. CAMPFIELD	1.00
F	KIMBALL L. JORDAN, SR	99.29
TOTAL GROSS ACRES		275.24



CERTIFICATE

THIS IS TO CERTIFY THAT THE ABOVE PLAT WAS PREPARED FROM FIELD NOTES OF ACTUAL SURVEYS MADE BY ME OR UNDER MY SUPERVISION AND THAT THE SAME ARE TRUE AND CORRECT TO THE BEST OF MY KNOWLEDGE AND BELIEF.

REV: 07-11-12 J.W.

UTIAH ENGINEERING & LAND SURVEYING

85 SOUTH 200 EAST - VERNAL, UTAH 84078

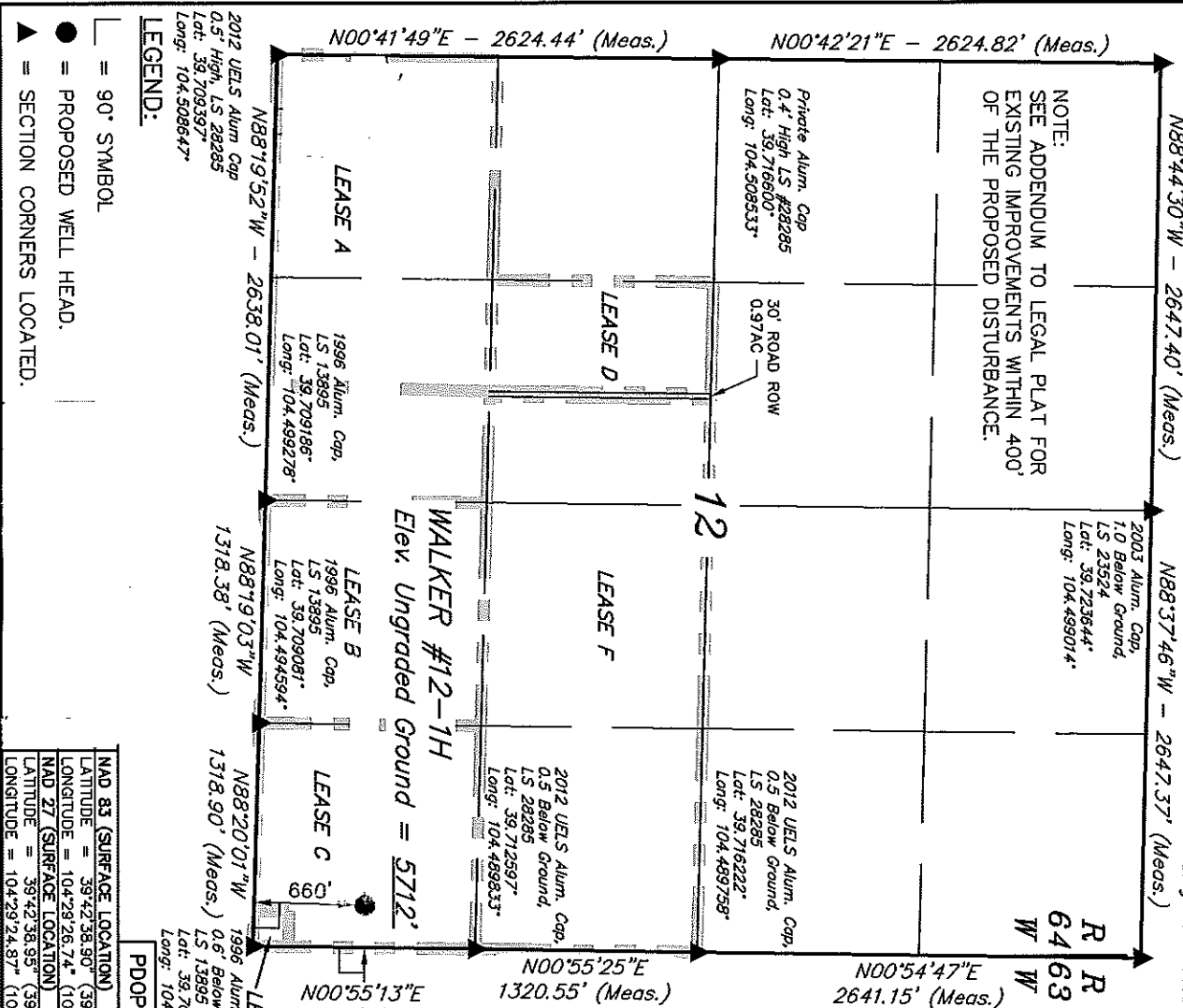
(435) 789-1017

SCALE 1" = 1000'

PARTY J.H. C.M. B.L.B.

WEATHER WARM

FILE ConocoPhillips Company



2000 Alum. Cap
1.5' Below Ground
LS 7361
Lat: 39.723803"
Long: 104.508419"

2003 Alum. Cap,
1.5' Below Ground,
LS 23524
Lat: 39.723469"
Long: 104.489608"

N88°44'30"W - 2647.40' (Meas.)

N88°37'46"W - 2647.37' (Meas.)

2003 Alum. Cap,
1.0' Below Ground,
LS 23524
Lat: 39.723644"
Long: 104.489014"

R 64 W
R 63 W

NOTE:
SEE ADDENDUM TO LEGAL PLAT FOR
EXISTING IMPROVEMENTS WITHIN 400'
OF THE PROPOSED DISTURBANCE.

Private Alum. Cap
0.4' High LS #28285
Lat: 39.716600"
Long: 104.508533"

2012 UELS Alum. Cap,
0.5' Below Ground,
LS 28285
Lat: 39.716222"
Long: 104.489758"

LEASE D

LEASE F

2012 UELS Alum. Cap,
0.5' Below Ground,
LS 28285
Lat: 39.712597"
Long: 104.489633"

WALKER #12-1H
Elev. Ungraded Ground = 5712'

LEASE A

1996 Alum. Cap,
LS 13895
Lat: 39.709186"
Long: 104.49278"

LEASE B
1996 Alum. Cap,
LS 13895
Lat: 39.709081"
Long: 104.494594"

LEASE C

N88°19'03"W
1318.38' (Meas.)

N88°20'01"W
1318.90' (Meas.)

LEASE E
1996 Alum. Cap,
0.6' Below Ground,
LS 13895
Lat: 39.708975"
Long: 104.489811"

2012 UELS Alum Cap
0.5' High LS 28285
Lat: 39.709397"
Long: 104.508647"

LEGEND:

90° SYMBOL

PROPOSED WELL HEAD.

SECTION CORNERS LOCATED.

NAD 83 (SURFACE LOCATION)	
LATITUDE = 39°42'38.90" (39.710806)	
LONGITUDE = 104°28'26.74" (104.490761)	
NAD 27 (SURFACE LOCATION)	
LATITUDE = 39°42'38.95" (39.710819)	
LONGITUDE = 104°28'24.87" (104.490242)	