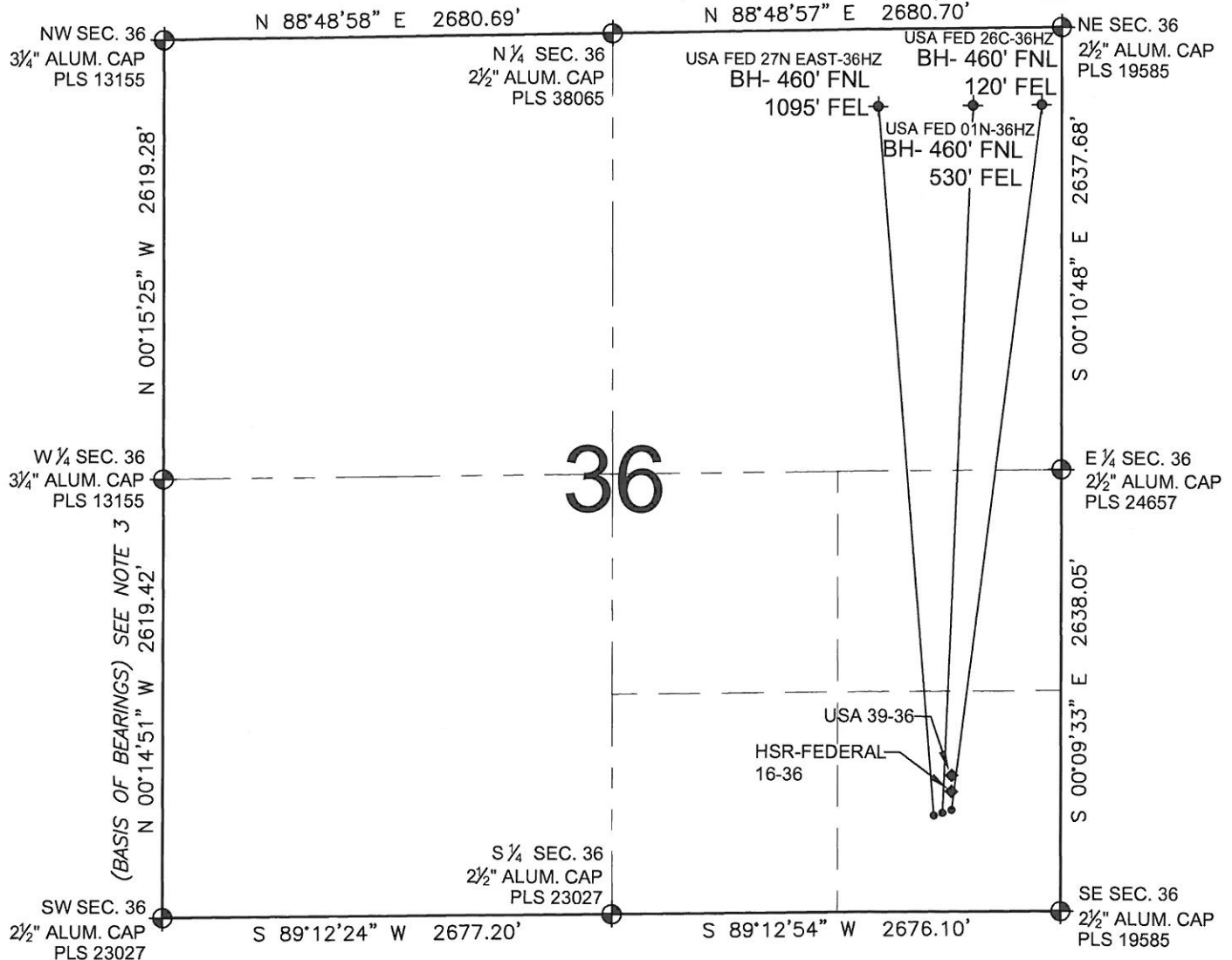


PAD DRAWING: USA FED 3 PAD

SECTION 36, TOWNSHIP 3 NORTH, RANGE 66 WEST, 6TH P.M.



LEGEND

- ⊕ = EXISTING MONUMENT
- ⬢ = BOTTOM HOLE
- BH= BOTTOM HOLE
- = PROPOSED WELL
- ◆ = EXISTING WELL

NOTES:

- THIS FIELD SURVEY CONFORMS TO THE MINIMUM STANDARDS SET BY THE C.O.G.C.C., RULE NO. 215
- HORIZONTAL POSITIONS AND ORTHOMETRIC ELEVATIONS SHOWN AT THE WELL HEAD, ARE BASED ON GPS-RTK POSITIONS DERIVED FROM MINIMUM 2-HOUR STATIC OBSERVATIONS CORRECTED BY THE NATIONAL GEODETIC SURVEY ONLINE POSITIONING USER SERVICE, O.P.U.S. DATUM: HORIZONTAL = NAD83/2007, VERTICAL = NAVD88
- THE BASIS OF BEARINGS ARE STATE PLANE COORDINATE SYSTEM GRID BEARINGS SHOWN HEREON BETWEEN THE DESCRIBED THE MONUMENTS SHOWN HEREON.
- GRID DISTANCES ARE SHOWN, AS MEASURED IN THE FIELD, WITH TIES TO WELLS MEASURED PERPENDICULAR TO SECTION LINES.

NOTES:

- USA FED 26C-36HZ TO BE AT 608' FSL, 653' FEL.
- BOTTOM HOLE AT 460' FNL & 120' FEL.
- USA FED 01N-36HZ TO BE AT 599' FSL, 681' FEL.
- BOTTOM HOLE AT 460' FNL & 530' FEL.
- USA FED 27N EAST-36HZ TO BE AT 591' FSL, 710' FEL.
- BOTTOM HOLE AT 460' FNL & 1095' FEL.
- HSR-FEDERAL 16-36 IS 656' FSL, 655' FEL.
- USA 39-36 IS 705' FSL, 659' FEL.

PREPARED BY:

PFS

Petroleum Field Services, LLC
1801 W. 13th Ave.
Denver, CO 80204



KERR-MCGEE OIL & GAS ONSHORE LP

FIELD DATE: 01-13-12	PAD NAME: USA FED 3 PAD
DRAWING DATE: 01-18-12	SURFACE LOCATION: WELD COUNTY, COLORADO
BY: SMF	SE 1/4 SE 1/4, SEC. 36, T3N, R66W, 6TH P.M.

