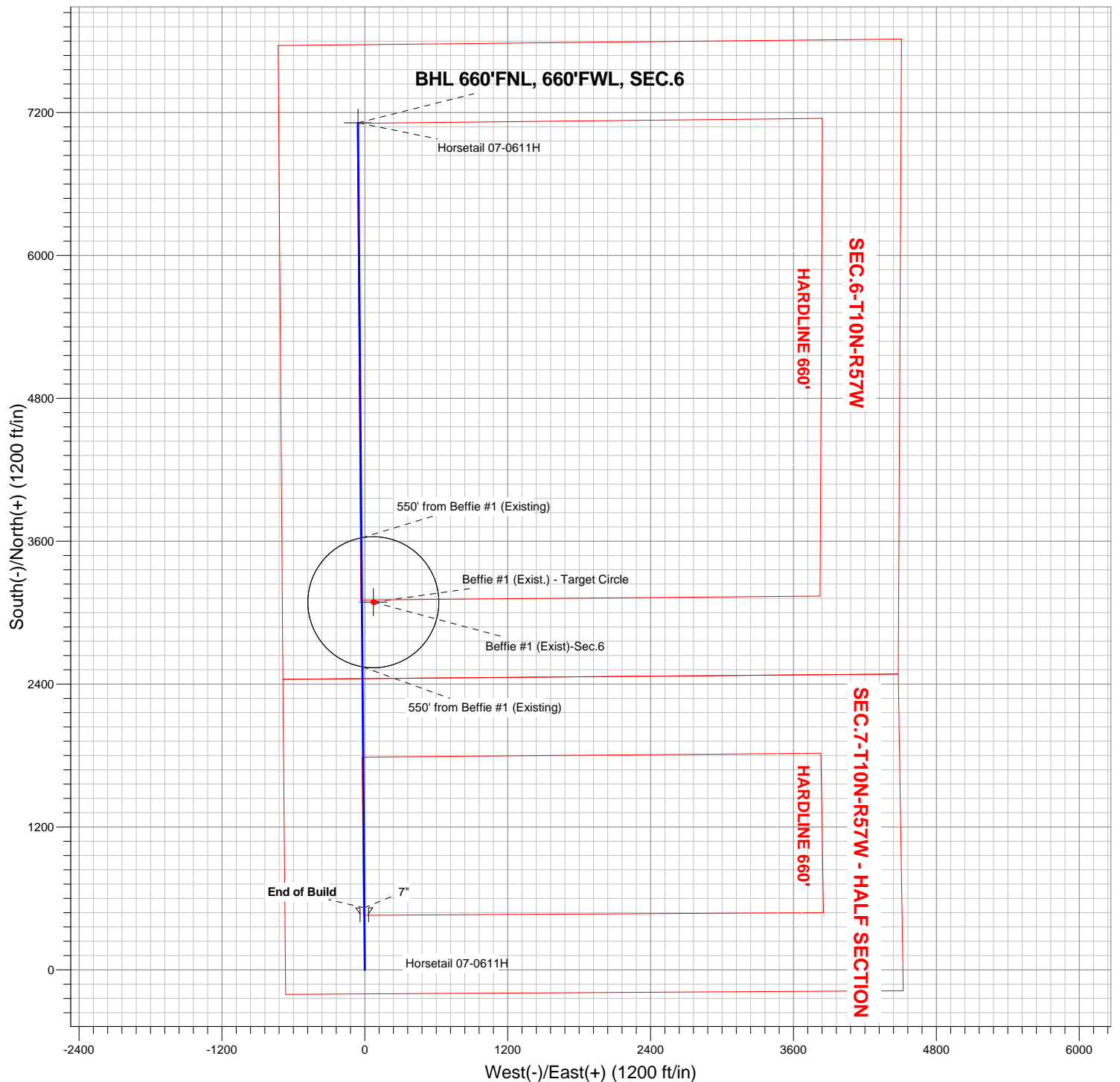


Horsetail 07-0611H

Surface Location: Horsetail 07-0611H Pad Sec.7-T10N-R57W

North American Datum 1983 , US State Plane 1983 , Colorado Northern Zone

+N/-S	+E/-W	Northing	Easting	Latitude	Longitude	Slot
0.0	0.0	1558450.07	3469810.03	40.853972	-103.801656	



ENSIGN
Directional



Directional

Whiting Oil & Gas

SEC.7-T10N-R57W

Horsetail 07-0611H Pad Sec.7-T10N-R57W

Horsetail 07-0611H

Wellbore #1

Plan: Plan #1 (6-20-12)

Standard Planning Report

16 January, 2013

Plan Sections										
Measured Depth (ft)	Inclination (°)	Azimuth (°)	Vertical Depth (ft)	+N/-S (ft)	+E/-W (ft)	Dogleg Rate (°/100ft)	Build Rate (°/100ft)	Turn Rate (°/100ft)	TFO (°)	Target
0.0	0.00	0.00	0.0	0.0	0.0	0.00	0.00	0.00	0.00	
5,459.1	0.00	0.00	5,459.1	0.0	0.0	0.00	0.00	0.00	0.00	
6,277.3	90.00	359.54	5,980.0	520.9	-4.2	11.00	11.00	0.00	359.54	
12,870.5	90.00	359.54	5,980.0	7,113.8	-56.7	0.00	0.00	0.00	0.00	BHL 660'FNL, 660'

Database:	Landmark	Local Co-ordinate Reference:	Well Horsetail 07-0611H
Company:	Whiting Oil & Gas	TVD Reference:	WELL @ 4942.2ft (RKB - 16.5')
Project:	SEC.7-T10N-R57W	MD Reference:	WELL @ 4942.2ft (RKB - 16.5')
Site:	Horsetail 07-0611H Pad Sec.7-T10N-R57W	North Reference:	True
Well:	Horsetail 07-0611H	Survey Calculation Method:	Minimum Curvature
Wellbore:	Wellbore #1		
Design:	Plan #1 (6-20-12)		

Planned Survey									
Measured Depth (ft)	Inclination (°)	Azimuth (°)	Vertical Depth (ft)	+N/-S (ft)	+E/-W (ft)	Vertical Section (ft)	Dogleg Rate (°/100ft)	Build Rate (°/100ft)	Turn Rate (°/100ft)
0.0	0.00	0.00	0.0	0.0	0.0	0.0	0.00	0.00	0.00
40.0	0.00	0.00	40.0	0.0	0.0	0.0	0.00	0.00	0.00
80.0	0.00	0.00	80.0	0.0	0.0	0.0	0.00	0.00	0.00
120.0	0.00	0.00	120.0	0.0	0.0	0.0	0.00	0.00	0.00
160.0	0.00	0.00	160.0	0.0	0.0	0.0	0.00	0.00	0.00
200.0	0.00	0.00	200.0	0.0	0.0	0.0	0.00	0.00	0.00
240.0	0.00	0.00	240.0	0.0	0.0	0.0	0.00	0.00	0.00
280.0	0.00	0.00	280.0	0.0	0.0	0.0	0.00	0.00	0.00
320.0	0.00	0.00	320.0	0.0	0.0	0.0	0.00	0.00	0.00
360.0	0.00	0.00	360.0	0.0	0.0	0.0	0.00	0.00	0.00
400.0	0.00	0.00	400.0	0.0	0.0	0.0	0.00	0.00	0.00
440.0	0.00	0.00	440.0	0.0	0.0	0.0	0.00	0.00	0.00
480.0	0.00	0.00	480.0	0.0	0.0	0.0	0.00	0.00	0.00
520.0	0.00	0.00	520.0	0.0	0.0	0.0	0.00	0.00	0.00
560.0	0.00	0.00	560.0	0.0	0.0	0.0	0.00	0.00	0.00
600.0	0.00	0.00	600.0	0.0	0.0	0.0	0.00	0.00	0.00
640.0	0.00	0.00	640.0	0.0	0.0	0.0	0.00	0.00	0.00
680.0	0.00	0.00	680.0	0.0	0.0	0.0	0.00	0.00	0.00
720.0	0.00	0.00	720.0	0.0	0.0	0.0	0.00	0.00	0.00
760.0	0.00	0.00	760.0	0.0	0.0	0.0	0.00	0.00	0.00
800.0	0.00	0.00	800.0	0.0	0.0	0.0	0.00	0.00	0.00
840.0	0.00	0.00	840.0	0.0	0.0	0.0	0.00	0.00	0.00
880.0	0.00	0.00	880.0	0.0	0.0	0.0	0.00	0.00	0.00
920.0	0.00	0.00	920.0	0.0	0.0	0.0	0.00	0.00	0.00
960.0	0.00	0.00	960.0	0.0	0.0	0.0	0.00	0.00	0.00
1,000.0	0.00	0.00	1,000.0	0.0	0.0	0.0	0.00	0.00	0.00
1,040.0	0.00	0.00	1,040.0	0.0	0.0	0.0	0.00	0.00	0.00
1,080.0	0.00	0.00	1,080.0	0.0	0.0	0.0	0.00	0.00	0.00
1,120.0	0.00	0.00	1,120.0	0.0	0.0	0.0	0.00	0.00	0.00
1,160.0	0.00	0.00	1,160.0	0.0	0.0	0.0	0.00	0.00	0.00
1,200.0	0.00	0.00	1,200.0	0.0	0.0	0.0	0.00	0.00	0.00
1,240.0	0.00	0.00	1,240.0	0.0	0.0	0.0	0.00	0.00	0.00
1,280.0	0.00	0.00	1,280.0	0.0	0.0	0.0	0.00	0.00	0.00
1,320.0	0.00	0.00	1,320.0	0.0	0.0	0.0	0.00	0.00	0.00
1,360.0	0.00	0.00	1,360.0	0.0	0.0	0.0	0.00	0.00	0.00
1,400.0	0.00	0.00	1,400.0	0.0	0.0	0.0	0.00	0.00	0.00
1,440.0	0.00	0.00	1,440.0	0.0	0.0	0.0	0.00	0.00	0.00
1,480.0	0.00	0.00	1,480.0	0.0	0.0	0.0	0.00	0.00	0.00
1,520.0	0.00	0.00	1,520.0	0.0	0.0	0.0	0.00	0.00	0.00
1,560.0	0.00	0.00	1,560.0	0.0	0.0	0.0	0.00	0.00	0.00
1,600.0	0.00	0.00	1,600.0	0.0	0.0	0.0	0.00	0.00	0.00
1,640.0	0.00	0.00	1,640.0	0.0	0.0	0.0	0.00	0.00	0.00
1,680.0	0.00	0.00	1,680.0	0.0	0.0	0.0	0.00	0.00	0.00
1,720.0	0.00	0.00	1,720.0	0.0	0.0	0.0	0.00	0.00	0.00
1,760.0	0.00	0.00	1,760.0	0.0	0.0	0.0	0.00	0.00	0.00
1,800.0	0.00	0.00	1,800.0	0.0	0.0	0.0	0.00	0.00	0.00
1,840.0	0.00	0.00	1,840.0	0.0	0.0	0.0	0.00	0.00	0.00
1,880.0	0.00	0.00	1,880.0	0.0	0.0	0.0	0.00	0.00	0.00
1,920.0	0.00	0.00	1,920.0	0.0	0.0	0.0	0.00	0.00	0.00
1,960.0	0.00	0.00	1,960.0	0.0	0.0	0.0	0.00	0.00	0.00
2,000.0	0.00	0.00	2,000.0	0.0	0.0	0.0	0.00	0.00	0.00
2,040.0	0.00	0.00	2,040.0	0.0	0.0	0.0	0.00	0.00	0.00
2,080.0	0.00	0.00	2,080.0	0.0	0.0	0.0	0.00	0.00	0.00
2,120.0	0.00	0.00	2,120.0	0.0	0.0	0.0	0.00	0.00	0.00

Database:	Landmark	Local Co-ordinate Reference:	Well Horsetail 07-0611H
Company:	Whiting Oil & Gas	TVD Reference:	WELL @ 4942.2ft (RKB - 16.5')
Project:	SEC.7-T10N-R57W	MD Reference:	WELL @ 4942.2ft (RKB - 16.5')
Site:	Horsetail 07-0611H Pad Sec.7-T10N-R57W	North Reference:	True
Well:	Horsetail 07-0611H	Survey Calculation Method:	Minimum Curvature
Wellbore:	Wellbore #1		
Design:	Plan #1 (6-20-12)		

Planned Survey									
Measured Depth (ft)	Inclination (°)	Azimuth (°)	Vertical Depth (ft)	+N/-S (ft)	+E/-W (ft)	Vertical Section (ft)	Dogleg Rate (°/100ft)	Build Rate (°/100ft)	Turn Rate (°/100ft)
2,160.0	0.00	0.00	2,160.0	0.0	0.0	0.0	0.00	0.00	0.00
2,200.0	0.00	0.00	2,200.0	0.0	0.0	0.0	0.00	0.00	0.00
2,240.0	0.00	0.00	2,240.0	0.0	0.0	0.0	0.00	0.00	0.00
2,280.0	0.00	0.00	2,280.0	0.0	0.0	0.0	0.00	0.00	0.00
2,320.0	0.00	0.00	2,320.0	0.0	0.0	0.0	0.00	0.00	0.00
2,360.0	0.00	0.00	2,360.0	0.0	0.0	0.0	0.00	0.00	0.00
2,400.0	0.00	0.00	2,400.0	0.0	0.0	0.0	0.00	0.00	0.00
2,440.0	0.00	0.00	2,440.0	0.0	0.0	0.0	0.00	0.00	0.00
2,480.0	0.00	0.00	2,480.0	0.0	0.0	0.0	0.00	0.00	0.00
2,520.0	0.00	0.00	2,520.0	0.0	0.0	0.0	0.00	0.00	0.00
2,560.0	0.00	0.00	2,560.0	0.0	0.0	0.0	0.00	0.00	0.00
2,600.0	0.00	0.00	2,600.0	0.0	0.0	0.0	0.00	0.00	0.00
2,640.0	0.00	0.00	2,640.0	0.0	0.0	0.0	0.00	0.00	0.00
2,680.0	0.00	0.00	2,680.0	0.0	0.0	0.0	0.00	0.00	0.00
2,720.0	0.00	0.00	2,720.0	0.0	0.0	0.0	0.00	0.00	0.00
2,760.0	0.00	0.00	2,760.0	0.0	0.0	0.0	0.00	0.00	0.00
2,800.0	0.00	0.00	2,800.0	0.0	0.0	0.0	0.00	0.00	0.00
2,840.0	0.00	0.00	2,840.0	0.0	0.0	0.0	0.00	0.00	0.00
2,880.0	0.00	0.00	2,880.0	0.0	0.0	0.0	0.00	0.00	0.00
2,920.0	0.00	0.00	2,920.0	0.0	0.0	0.0	0.00	0.00	0.00
2,960.0	0.00	0.00	2,960.0	0.0	0.0	0.0	0.00	0.00	0.00
3,000.0	0.00	0.00	3,000.0	0.0	0.0	0.0	0.00	0.00	0.00
3,040.0	0.00	0.00	3,040.0	0.0	0.0	0.0	0.00	0.00	0.00
3,080.0	0.00	0.00	3,080.0	0.0	0.0	0.0	0.00	0.00	0.00
3,120.0	0.00	0.00	3,120.0	0.0	0.0	0.0	0.00	0.00	0.00
3,160.0	0.00	0.00	3,160.0	0.0	0.0	0.0	0.00	0.00	0.00
3,200.0	0.00	0.00	3,200.0	0.0	0.0	0.0	0.00	0.00	0.00
3,240.0	0.00	0.00	3,240.0	0.0	0.0	0.0	0.00	0.00	0.00
3,280.0	0.00	0.00	3,280.0	0.0	0.0	0.0	0.00	0.00	0.00
3,320.0	0.00	0.00	3,320.0	0.0	0.0	0.0	0.00	0.00	0.00
3,360.0	0.00	0.00	3,360.0	0.0	0.0	0.0	0.00	0.00	0.00
3,400.0	0.00	0.00	3,400.0	0.0	0.0	0.0	0.00	0.00	0.00
3,440.0	0.00	0.00	3,440.0	0.0	0.0	0.0	0.00	0.00	0.00
3,480.0	0.00	0.00	3,480.0	0.0	0.0	0.0	0.00	0.00	0.00
3,520.0	0.00	0.00	3,520.0	0.0	0.0	0.0	0.00	0.00	0.00
3,560.0	0.00	0.00	3,560.0	0.0	0.0	0.0	0.00	0.00	0.00
3,600.0	0.00	0.00	3,600.0	0.0	0.0	0.0	0.00	0.00	0.00
3,640.0	0.00	0.00	3,640.0	0.0	0.0	0.0	0.00	0.00	0.00
3,680.0	0.00	0.00	3,680.0	0.0	0.0	0.0	0.00	0.00	0.00
3,720.0	0.00	0.00	3,720.0	0.0	0.0	0.0	0.00	0.00	0.00
3,760.0	0.00	0.00	3,760.0	0.0	0.0	0.0	0.00	0.00	0.00
3,800.0	0.00	0.00	3,800.0	0.0	0.0	0.0	0.00	0.00	0.00
3,840.0	0.00	0.00	3,840.0	0.0	0.0	0.0	0.00	0.00	0.00
3,880.0	0.00	0.00	3,880.0	0.0	0.0	0.0	0.00	0.00	0.00
3,920.0	0.00	0.00	3,920.0	0.0	0.0	0.0	0.00	0.00	0.00
3,960.0	0.00	0.00	3,960.0	0.0	0.0	0.0	0.00	0.00	0.00
4,000.0	0.00	0.00	4,000.0	0.0	0.0	0.0	0.00	0.00	0.00
4,040.0	0.00	0.00	4,040.0	0.0	0.0	0.0	0.00	0.00	0.00
4,080.0	0.00	0.00	4,080.0	0.0	0.0	0.0	0.00	0.00	0.00
4,120.0	0.00	0.00	4,120.0	0.0	0.0	0.0	0.00	0.00	0.00
4,160.0	0.00	0.00	4,160.0	0.0	0.0	0.0	0.00	0.00	0.00
4,200.0	0.00	0.00	4,200.0	0.0	0.0	0.0	0.00	0.00	0.00
4,240.0	0.00	0.00	4,240.0	0.0	0.0	0.0	0.00	0.00	0.00
4,280.0	0.00	0.00	4,280.0	0.0	0.0	0.0	0.00	0.00	0.00

Database:	Landmark	Local Co-ordinate Reference:	Well Horsetail 07-0611H
Company:	Whiting Oil & Gas	TVD Reference:	WELL @ 4942.2ft (RKB - 16.5')
Project:	SEC.7-T10N-R57W	MD Reference:	WELL @ 4942.2ft (RKB - 16.5')
Site:	Horsetail 07-0611H Pad Sec.7-T10N-R57W	North Reference:	True
Well:	Horsetail 07-0611H	Survey Calculation Method:	Minimum Curvature
Wellbore:	Wellbore #1		
Design:	Plan #1 (6-20-12)		

Planned Survey									
Measured Depth (ft)	Inclination (°)	Azimuth (°)	Vertical Depth (ft)	+N/-S (ft)	+E/-W (ft)	Vertical Section (ft)	Dogleg Rate (°/100ft)	Build Rate (°/100ft)	Turn Rate (°/100ft)
4,320.0	0.00	0.00	4,320.0	0.0	0.0	0.0	0.00	0.00	0.00
4,360.0	0.00	0.00	4,360.0	0.0	0.0	0.0	0.00	0.00	0.00
4,400.0	0.00	0.00	4,400.0	0.0	0.0	0.0	0.00	0.00	0.00
4,440.0	0.00	0.00	4,440.0	0.0	0.0	0.0	0.00	0.00	0.00
4,480.0	0.00	0.00	4,480.0	0.0	0.0	0.0	0.00	0.00	0.00
4,520.0	0.00	0.00	4,520.0	0.0	0.0	0.0	0.00	0.00	0.00
4,560.0	0.00	0.00	4,560.0	0.0	0.0	0.0	0.00	0.00	0.00
4,600.0	0.00	0.00	4,600.0	0.0	0.0	0.0	0.00	0.00	0.00
4,640.0	0.00	0.00	4,640.0	0.0	0.0	0.0	0.00	0.00	0.00
4,680.0	0.00	0.00	4,680.0	0.0	0.0	0.0	0.00	0.00	0.00
4,720.0	0.00	0.00	4,720.0	0.0	0.0	0.0	0.00	0.00	0.00
4,760.0	0.00	0.00	4,760.0	0.0	0.0	0.0	0.00	0.00	0.00
4,800.0	0.00	0.00	4,800.0	0.0	0.0	0.0	0.00	0.00	0.00
4,840.0	0.00	0.00	4,840.0	0.0	0.0	0.0	0.00	0.00	0.00
4,880.0	0.00	0.00	4,880.0	0.0	0.0	0.0	0.00	0.00	0.00
4,920.0	0.00	0.00	4,920.0	0.0	0.0	0.0	0.00	0.00	0.00
4,960.0	0.00	0.00	4,960.0	0.0	0.0	0.0	0.00	0.00	0.00
5,000.0	0.00	0.00	5,000.0	0.0	0.0	0.0	0.00	0.00	0.00
5,040.0	0.00	0.00	5,040.0	0.0	0.0	0.0	0.00	0.00	0.00
5,080.0	0.00	0.00	5,080.0	0.0	0.0	0.0	0.00	0.00	0.00
5,120.0	0.00	0.00	5,120.0	0.0	0.0	0.0	0.00	0.00	0.00
5,160.0	0.00	0.00	5,160.0	0.0	0.0	0.0	0.00	0.00	0.00
5,200.0	0.00	0.00	5,200.0	0.0	0.0	0.0	0.00	0.00	0.00
5,240.0	0.00	0.00	5,240.0	0.0	0.0	0.0	0.00	0.00	0.00
5,280.0	0.00	0.00	5,280.0	0.0	0.0	0.0	0.00	0.00	0.00
5,320.0	0.00	0.00	5,320.0	0.0	0.0	0.0	0.00	0.00	0.00
5,360.0	0.00	0.00	5,360.0	0.0	0.0	0.0	0.00	0.00	0.00
5,400.0	0.00	0.00	5,400.0	0.0	0.0	0.0	0.00	0.00	0.00
5,440.0	0.00	0.00	5,440.0	0.0	0.0	0.0	0.00	0.00	0.00
5,459.1	0.00	0.00	5,459.1	0.0	0.0	0.0	0.00	0.00	0.00
5,480.0	2.30	359.54	5,480.0	0.4	0.0	0.4	11.00	11.00	0.00
5,520.0	6.70	359.54	5,519.9	3.6	0.0	3.6	11.00	11.00	0.00
5,560.0	11.10	359.54	5,559.4	9.7	-0.1	9.7	11.00	11.00	0.00
5,600.0	15.50	359.54	5,598.3	18.9	-0.2	18.9	11.00	11.00	0.00
5,640.0	19.90	359.54	5,636.4	31.1	-0.2	31.1	11.00	11.00	0.00
5,680.0	24.30	359.54	5,673.4	46.1	-0.4	46.1	11.00	11.00	0.00
5,720.0	28.70	359.54	5,709.2	64.0	-0.5	64.0	11.00	11.00	0.00
5,760.0	33.10	359.54	5,743.5	84.5	-0.7	84.5	11.00	11.00	0.00
5,794.7	36.91	359.54	5,772.0	104.4	-0.8	104.4	11.00	11.00	0.00
NIOBRARA									
5,800.0	37.50	359.54	5,776.2	107.6	-0.9	107.6	11.00	11.00	0.00
5,840.0	41.90	359.54	5,807.0	133.2	-1.1	133.2	11.00	11.00	0.00
5,880.0	46.30	359.54	5,835.7	161.0	-1.3	161.0	11.00	11.00	0.00
5,920.0	50.70	359.54	5,862.2	190.9	-1.5	190.9	11.00	11.00	0.00
5,960.0	55.10	359.54	5,886.3	222.8	-1.8	222.8	11.00	11.00	0.00
6,000.0	59.50	359.54	5,907.9	256.5	-2.0	256.5	11.00	11.00	0.00
6,040.0	63.90	359.54	5,926.9	291.7	-2.3	291.7	11.00	11.00	0.00
6,080.0	68.30	359.54	5,943.1	328.2	-2.6	328.2	11.00	11.00	0.00
6,120.0	72.70	359.54	5,956.4	365.9	-2.9	365.9	11.00	11.00	0.00
6,160.0	77.10	359.54	5,966.8	404.5	-3.2	404.5	11.00	11.00	0.00
6,200.0	81.50	359.54	5,974.3	443.8	-3.5	443.8	11.00	11.00	0.00
6,240.0	85.90	359.54	5,978.7	483.6	-3.9	483.6	11.00	11.00	0.00
6,277.3	90.00	359.54	5,980.0	520.8	-4.2	520.9	11.00	11.00	0.00
End of Build - 7"									

Database:	Landmark	Local Co-ordinate Reference:	Well Horsetail 07-0611H
Company:	Whiting Oil & Gas	TVD Reference:	WELL @ 4942.2ft (RKB - 16.5')
Project:	SEC.7-T10N-R57W	MD Reference:	WELL @ 4942.2ft (RKB - 16.5')
Site:	Horsetail 07-0611H Pad Sec.7-T10N-R57W	North Reference:	True
Well:	Horsetail 07-0611H	Survey Calculation Method:	Minimum Curvature
Wellbore:	Wellbore #1		
Design:	Plan #1 (6-20-12)		

Planned Survey									
Measured Depth (ft)	Inclination (°)	Azimuth (°)	Vertical Depth (ft)	+N/-S (ft)	+E/-W (ft)	Vertical Section (ft)	Dogleg Rate (°/100ft)	Build Rate (°/100ft)	Turn Rate (°/100ft)
6,280.0	90.00	359.54	5,980.0	523.5	-4.2	523.6	0.05	0.05	0.00
6,320.0	90.00	359.54	5,980.0	563.5	-4.5	563.6	0.00	0.00	0.00
6,360.0	90.00	359.54	5,980.0	603.5	-4.8	603.6	0.00	0.00	0.00
6,400.0	90.00	359.54	5,980.0	643.5	-5.1	643.6	0.00	0.00	0.00
6,440.0	90.00	359.54	5,980.0	683.5	-5.4	683.6	0.00	0.00	0.00
6,480.0	90.00	359.54	5,980.0	723.5	-5.8	723.6	0.00	0.00	0.00
6,520.0	90.00	359.54	5,980.0	763.5	-6.1	763.6	0.00	0.00	0.00
6,560.0	90.00	359.54	5,980.0	803.5	-6.4	803.6	0.00	0.00	0.00
6,600.0	90.00	359.54	5,980.0	843.5	-6.7	843.6	0.00	0.00	0.00
6,640.0	90.00	359.54	5,980.0	883.5	-7.0	883.6	0.00	0.00	0.00
6,680.0	90.00	359.54	5,980.0	923.5	-7.4	923.6	0.00	0.00	0.00
6,720.0	90.00	359.54	5,980.0	963.5	-7.7	963.6	0.00	0.00	0.00
6,760.0	90.00	359.54	5,980.0	1,003.5	-8.0	1,003.6	0.00	0.00	0.00
6,800.0	90.00	359.54	5,980.0	1,043.5	-8.3	1,043.6	0.00	0.00	0.00
6,840.0	90.00	359.54	5,980.0	1,083.5	-8.6	1,083.6	0.00	0.00	0.00
6,880.0	90.00	359.54	5,980.0	1,123.5	-9.0	1,123.6	0.00	0.00	0.00
6,920.0	90.00	359.54	5,980.0	1,163.5	-9.3	1,163.6	0.00	0.00	0.00
6,960.0	90.00	359.54	5,980.0	1,203.5	-9.6	1,203.6	0.00	0.00	0.00
7,000.0	90.00	359.54	5,980.0	1,243.5	-9.9	1,243.6	0.00	0.00	0.00
7,040.0	90.00	359.54	5,980.0	1,283.5	-10.2	1,283.6	0.00	0.00	0.00
7,080.0	90.00	359.54	5,980.0	1,323.5	-10.5	1,323.6	0.00	0.00	0.00
7,120.0	90.00	359.54	5,980.0	1,363.5	-10.9	1,363.6	0.00	0.00	0.00
7,160.0	90.00	359.54	5,980.0	1,403.5	-11.2	1,403.6	0.00	0.00	0.00
7,200.0	90.00	359.54	5,980.0	1,443.5	-11.5	1,443.6	0.00	0.00	0.00
7,240.0	90.00	359.54	5,980.0	1,483.5	-11.8	1,483.6	0.00	0.00	0.00
7,280.0	90.00	359.54	5,980.0	1,523.5	-12.1	1,523.6	0.00	0.00	0.00
7,320.0	90.00	359.54	5,980.0	1,563.5	-12.5	1,563.6	0.00	0.00	0.00
7,360.0	90.00	359.54	5,980.0	1,603.5	-12.8	1,603.6	0.00	0.00	0.00
7,400.0	90.00	359.54	5,980.0	1,643.5	-13.1	1,643.6	0.00	0.00	0.00
7,440.0	90.00	359.54	5,980.0	1,683.5	-13.4	1,683.6	0.00	0.00	0.00
7,480.0	90.00	359.54	5,980.0	1,723.5	-13.7	1,723.6	0.00	0.00	0.00
7,520.0	90.00	359.54	5,980.0	1,763.5	-14.1	1,763.6	0.00	0.00	0.00
7,560.0	90.00	359.54	5,980.0	1,803.5	-14.4	1,803.6	0.00	0.00	0.00
7,600.0	90.00	359.54	5,980.0	1,843.5	-14.7	1,843.6	0.00	0.00	0.00
7,640.0	90.00	359.54	5,980.0	1,883.5	-15.0	1,883.6	0.00	0.00	0.00
7,680.0	90.00	359.54	5,980.0	1,923.5	-15.3	1,923.6	0.00	0.00	0.00
7,720.0	90.00	359.54	5,980.0	1,963.5	-15.6	1,963.6	0.00	0.00	0.00
7,760.0	90.00	359.54	5,980.0	2,003.5	-16.0	2,003.6	0.00	0.00	0.00
7,800.0	90.00	359.54	5,980.0	2,043.5	-16.3	2,043.6	0.00	0.00	0.00
7,840.0	90.00	359.54	5,980.0	2,083.5	-16.6	2,083.6	0.00	0.00	0.00
7,880.0	90.00	359.54	5,980.0	2,123.5	-16.9	2,123.6	0.00	0.00	0.00
7,920.0	90.00	359.54	5,980.0	2,163.5	-17.2	2,163.6	0.00	0.00	0.00
7,960.0	90.00	359.54	5,980.0	2,203.5	-17.6	2,203.6	0.00	0.00	0.00
8,000.0	90.00	359.54	5,980.0	2,243.5	-17.9	2,243.6	0.00	0.00	0.00
8,040.0	90.00	359.54	5,980.0	2,283.5	-18.2	2,283.6	0.00	0.00	0.00
8,080.0	90.00	359.54	5,980.0	2,323.5	-18.5	2,323.6	0.00	0.00	0.00
8,120.0	90.00	359.54	5,980.0	2,363.5	-18.8	2,363.6	0.00	0.00	0.00
8,160.0	90.00	359.54	5,980.0	2,403.5	-19.2	2,403.6	0.00	0.00	0.00
8,200.0	90.00	359.54	5,980.0	2,443.5	-19.5	2,443.6	0.00	0.00	0.00
8,240.0	90.00	359.54	5,980.0	2,483.5	-19.8	2,483.6	0.00	0.00	0.00
8,280.0	90.00	359.54	5,980.0	2,523.5	-20.1	2,523.6	0.00	0.00	0.00
8,302.0	90.00	359.54	5,980.0	2,545.5	-20.3	2,545.6	0.00	0.00	0.00
550' from Boffie #1 (Existing)									

Database:	Landmark	Local Co-ordinate Reference:	Well Horsetail 07-0611H
Company:	Whiting Oil & Gas	TVD Reference:	WELL @ 4942.2ft (RKB - 16.5')
Project:	SEC.7-T10N-R57W	MD Reference:	WELL @ 4942.2ft (RKB - 16.5')
Site:	Horsetail 07-0611H Pad Sec.7-T10N-R57W	North Reference:	True
Well:	Horsetail 07-0611H	Survey Calculation Method:	Minimum Curvature
Wellbore:	Wellbore #1		
Design:	Plan #1 (6-20-12)		

Planned Survey									
Measured Depth (ft)	Inclination (°)	Azimuth (°)	Vertical Depth (ft)	+N/-S (ft)	+E/-W (ft)	Vertical Section (ft)	Dogleg Rate (°/100ft)	Build Rate (°/100ft)	Turn Rate (°/100ft)
8,320.0	90.00	359.54	5,980.0	2,563.5	-20.4	2,563.6	0.00	0.00	0.00
8,360.0	90.00	359.54	5,980.0	2,603.5	-20.7	2,603.6	0.00	0.00	0.00
8,400.0	90.00	359.54	5,980.0	2,643.5	-21.1	2,643.6	0.00	0.00	0.00
8,440.0	90.00	359.54	5,980.0	2,683.5	-21.4	2,683.6	0.00	0.00	0.00
8,480.0	90.00	359.54	5,980.0	2,723.5	-21.7	2,723.6	0.00	0.00	0.00
8,520.0	90.00	359.54	5,980.0	2,763.5	-22.0	2,763.6	0.00	0.00	0.00
8,560.0	90.00	359.54	5,980.0	2,803.5	-22.3	2,803.6	0.00	0.00	0.00
8,600.0	90.00	359.54	5,980.0	2,843.5	-22.7	2,843.6	0.00	0.00	0.00
8,640.0	90.00	359.54	5,980.0	2,883.5	-23.0	2,883.6	0.00	0.00	0.00
8,680.0	90.00	359.54	5,980.0	2,923.5	-23.3	2,923.6	0.00	0.00	0.00
8,720.0	90.00	359.54	5,980.0	2,963.5	-23.6	2,963.6	0.00	0.00	0.00
8,760.0	90.00	359.54	5,980.0	3,003.5	-23.9	3,003.6	0.00	0.00	0.00
8,800.0	90.00	359.54	5,980.0	3,043.5	-24.3	3,043.6	0.00	0.00	0.00
8,840.0	90.00	359.54	5,980.0	3,083.5	-24.6	3,083.6	0.00	0.00	0.00
8,880.0	90.00	359.54	5,980.0	3,123.5	-24.9	3,123.6	0.00	0.00	0.00
8,920.0	90.00	359.54	5,980.0	3,163.5	-25.2	3,163.6	0.00	0.00	0.00
8,960.0	90.00	359.54	5,980.0	3,203.5	-25.5	3,203.6	0.00	0.00	0.00
9,000.0	90.00	359.54	5,980.0	3,243.5	-25.8	3,243.6	0.00	0.00	0.00
9,040.0	90.00	359.54	5,980.0	3,283.5	-26.2	3,283.6	0.00	0.00	0.00
9,080.0	90.00	359.54	5,980.0	3,323.5	-26.5	3,323.6	0.00	0.00	0.00
9,120.0	90.00	359.54	5,980.0	3,363.5	-26.8	3,363.6	0.00	0.00	0.00
9,160.0	90.00	359.54	5,980.0	3,403.5	-27.1	3,403.6	0.00	0.00	0.00
9,200.0	90.00	359.54	5,980.0	3,443.5	-27.4	3,443.6	0.00	0.00	0.00
9,240.0	90.00	359.54	5,980.0	3,483.4	-27.8	3,483.6	0.00	0.00	0.00
9,280.0	90.00	359.54	5,980.0	3,523.4	-28.1	3,523.6	0.00	0.00	0.00
9,320.0	90.00	359.54	5,980.0	3,563.4	-28.4	3,563.6	0.00	0.00	0.00
9,360.0	90.00	359.54	5,980.0	3,603.4	-28.7	3,603.6	0.00	0.00	0.00
9,385.0	90.00	359.54	5,980.0	3,628.4	-28.9	3,628.6	0.00	0.00	0.00
550' from Boffie #1 (Existing)									
9,400.0	90.00	359.54	5,980.0	3,643.4	-29.0	3,643.6	0.00	0.00	0.00
9,440.0	90.00	359.54	5,980.0	3,683.4	-29.4	3,683.6	0.00	0.00	0.00
9,480.0	90.00	359.54	5,980.0	3,723.4	-29.7	3,723.6	0.00	0.00	0.00
9,520.0	90.00	359.54	5,980.0	3,763.4	-30.0	3,763.6	0.00	0.00	0.00
9,560.0	90.00	359.54	5,980.0	3,803.4	-30.3	3,803.6	0.00	0.00	0.00
9,600.0	90.00	359.54	5,980.0	3,843.4	-30.6	3,843.6	0.00	0.00	0.00
9,640.0	90.00	359.54	5,980.0	3,883.4	-31.0	3,883.6	0.00	0.00	0.00
9,680.0	90.00	359.54	5,980.0	3,923.4	-31.3	3,923.6	0.00	0.00	0.00
9,720.0	90.00	359.54	5,980.0	3,963.4	-31.6	3,963.6	0.00	0.00	0.00
9,760.0	90.00	359.54	5,980.0	4,003.4	-31.9	4,003.6	0.00	0.00	0.00
9,800.0	90.00	359.54	5,980.0	4,043.4	-32.2	4,043.6	0.00	0.00	0.00
9,840.0	90.00	359.54	5,980.0	4,083.4	-32.5	4,083.6	0.00	0.00	0.00
9,880.0	90.00	359.54	5,980.0	4,123.4	-32.9	4,123.6	0.00	0.00	0.00
9,920.0	90.00	359.54	5,980.0	4,163.4	-33.2	4,163.6	0.00	0.00	0.00
9,960.0	90.00	359.54	5,980.0	4,203.4	-33.5	4,203.6	0.00	0.00	0.00
10,000.0	90.00	359.54	5,980.0	4,243.4	-33.8	4,243.6	0.00	0.00	0.00
10,040.0	90.00	359.54	5,980.0	4,283.4	-34.1	4,283.6	0.00	0.00	0.00
10,080.0	90.00	359.54	5,980.0	4,323.4	-34.5	4,323.6	0.00	0.00	0.00
10,120.0	90.00	359.54	5,980.0	4,363.4	-34.8	4,363.6	0.00	0.00	0.00
10,160.0	90.00	359.54	5,980.0	4,403.4	-35.1	4,403.6	0.00	0.00	0.00
10,200.0	90.00	359.54	5,980.0	4,443.4	-35.4	4,443.6	0.00	0.00	0.00
10,240.0	90.00	359.54	5,980.0	4,483.4	-35.7	4,483.6	0.00	0.00	0.00
10,280.0	90.00	359.54	5,980.0	4,523.4	-36.1	4,523.6	0.00	0.00	0.00
10,320.0	90.00	359.54	5,980.0	4,563.4	-36.4	4,563.6	0.00	0.00	0.00
10,360.0	90.00	359.54	5,980.0	4,603.4	-36.7	4,603.6	0.00	0.00	0.00

Database:	Landmark	Local Co-ordinate Reference:	Well Horsetail 07-0611H
Company:	Whiting Oil & Gas	TVD Reference:	WELL @ 4942.2ft (RKB - 16.5')
Project:	SEC.7-T10N-R57W	MD Reference:	WELL @ 4942.2ft (RKB - 16.5')
Site:	Horsetail 07-0611H Pad Sec.7-T10N-R57W	North Reference:	True
Well:	Horsetail 07-0611H	Survey Calculation Method:	Minimum Curvature
Wellbore:	Wellbore #1		
Design:	Plan #1 (6-20-12)		

Planned Survey									
Measured Depth (ft)	Inclination (°)	Azimuth (°)	Vertical Depth (ft)	+N/-S (ft)	+E/-W (ft)	Vertical Section (ft)	Dogleg Rate (°/100ft)	Build Rate (°/100ft)	Turn Rate (°/100ft)
10,400.0	90.00	359.54	5,980.0	4,643.4	-37.0	4,643.6	0.00	0.00	0.00
10,440.0	90.00	359.54	5,980.0	4,683.4	-37.3	4,683.6	0.00	0.00	0.00
10,480.0	90.00	359.54	5,980.0	4,723.4	-37.6	4,723.6	0.00	0.00	0.00
10,520.0	90.00	359.54	5,980.0	4,763.4	-38.0	4,763.6	0.00	0.00	0.00
10,560.0	90.00	359.54	5,980.0	4,803.4	-38.3	4,803.6	0.00	0.00	0.00
10,600.0	90.00	359.54	5,980.0	4,843.4	-38.6	4,843.6	0.00	0.00	0.00
10,640.0	90.00	359.54	5,980.0	4,883.4	-38.9	4,883.6	0.00	0.00	0.00
10,680.0	90.00	359.54	5,980.0	4,923.4	-39.2	4,923.6	0.00	0.00	0.00
10,720.0	90.00	359.54	5,980.0	4,963.4	-39.6	4,963.6	0.00	0.00	0.00
10,760.0	90.00	359.54	5,980.0	5,003.4	-39.9	5,003.6	0.00	0.00	0.00
10,800.0	90.00	359.54	5,980.0	5,043.4	-40.2	5,043.6	0.00	0.00	0.00
10,840.0	90.00	359.54	5,980.0	5,083.4	-40.5	5,083.6	0.00	0.00	0.00
10,880.0	90.00	359.54	5,980.0	5,123.4	-40.8	5,123.6	0.00	0.00	0.00
10,920.0	90.00	359.54	5,980.0	5,163.4	-41.2	5,163.6	0.00	0.00	0.00
10,960.0	90.00	359.54	5,980.0	5,203.4	-41.5	5,203.6	0.00	0.00	0.00
11,000.0	90.00	359.54	5,980.0	5,243.4	-41.8	5,243.6	0.00	0.00	0.00
11,040.0	90.00	359.54	5,980.0	5,283.4	-42.1	5,283.6	0.00	0.00	0.00
11,080.0	90.00	359.54	5,980.0	5,323.4	-42.4	5,323.6	0.00	0.00	0.00
11,120.0	90.00	359.54	5,980.0	5,363.4	-42.7	5,363.6	0.00	0.00	0.00
11,160.0	90.00	359.54	5,980.0	5,403.4	-43.1	5,403.6	0.00	0.00	0.00
11,200.0	90.00	359.54	5,980.0	5,443.4	-43.4	5,443.6	0.00	0.00	0.00
11,240.0	90.00	359.54	5,980.0	5,483.4	-43.7	5,483.6	0.00	0.00	0.00
11,280.0	90.00	359.54	5,980.0	5,523.4	-44.0	5,523.6	0.00	0.00	0.00
11,320.0	90.00	359.54	5,980.0	5,563.4	-44.3	5,563.6	0.00	0.00	0.00
11,360.0	90.00	359.54	5,980.0	5,603.4	-44.7	5,603.6	0.00	0.00	0.00
11,400.0	90.00	359.54	5,980.0	5,643.4	-45.0	5,643.6	0.00	0.00	0.00
11,440.0	90.00	359.54	5,980.0	5,683.4	-45.3	5,683.6	0.00	0.00	0.00
11,480.0	90.00	359.54	5,980.0	5,723.4	-45.6	5,723.6	0.00	0.00	0.00
11,520.0	90.00	359.54	5,980.0	5,763.4	-45.9	5,763.6	0.00	0.00	0.00
11,560.0	90.00	359.54	5,980.0	5,803.4	-46.3	5,803.6	0.00	0.00	0.00
11,600.0	90.00	359.54	5,980.0	5,843.4	-46.6	5,843.6	0.00	0.00	0.00
11,640.0	90.00	359.54	5,980.0	5,883.4	-46.9	5,883.6	0.00	0.00	0.00
11,680.0	90.00	359.54	5,980.0	5,923.4	-47.2	5,923.6	0.00	0.00	0.00
11,720.0	90.00	359.54	5,980.0	5,963.4	-47.5	5,963.6	0.00	0.00	0.00
11,760.0	90.00	359.54	5,980.0	6,003.4	-47.8	6,003.6	0.00	0.00	0.00
11,800.0	90.00	359.54	5,980.0	6,043.4	-48.2	6,043.6	0.00	0.00	0.00
11,840.0	90.00	359.54	5,980.0	6,083.4	-48.5	6,083.6	0.00	0.00	0.00
11,880.0	90.00	359.54	5,980.0	6,123.4	-48.8	6,123.6	0.00	0.00	0.00
11,920.0	90.00	359.54	5,980.0	6,163.4	-49.1	6,163.6	0.00	0.00	0.00
11,960.0	90.00	359.54	5,980.0	6,203.4	-49.4	6,203.6	0.00	0.00	0.00
12,000.0	90.00	359.54	5,980.0	6,243.4	-49.8	6,243.6	0.00	0.00	0.00
12,040.0	90.00	359.54	5,980.0	6,283.4	-50.1	6,283.6	0.00	0.00	0.00
12,080.0	90.00	359.54	5,980.0	6,323.4	-50.4	6,323.6	0.00	0.00	0.00
12,120.0	90.00	359.54	5,980.0	6,363.4	-50.7	6,363.6	0.00	0.00	0.00
12,160.0	90.00	359.54	5,980.0	6,403.4	-51.0	6,403.6	0.00	0.00	0.00
12,200.0	90.00	359.54	5,980.0	6,443.4	-51.4	6,443.6	0.00	0.00	0.00
12,240.0	90.00	359.54	5,980.0	6,483.4	-51.7	6,483.6	0.00	0.00	0.00
12,280.0	90.00	359.54	5,980.0	6,523.4	-52.0	6,523.6	0.00	0.00	0.00
12,320.0	90.00	359.54	5,980.0	6,563.4	-52.3	6,563.6	0.00	0.00	0.00
12,360.0	90.00	359.54	5,980.0	6,603.4	-52.6	6,603.6	0.00	0.00	0.00
12,400.0	90.00	359.54	5,980.0	6,643.3	-52.9	6,643.6	0.00	0.00	0.00
12,440.0	90.00	359.54	5,980.0	6,683.3	-53.3	6,683.6	0.00	0.00	0.00
12,480.0	90.00	359.54	5,980.0	6,723.3	-53.6	6,723.6	0.00	0.00	0.00
12,520.0	90.00	359.54	5,980.0	6,763.3	-53.9	6,763.6	0.00	0.00	0.00

Database: Landmark
Company: Whiting Oil & Gas
Project: SEC.7-T10N-R57W
Site: Horsetail 07-0611H Pad Sec.7-T10N-R57W
Well: Horsetail 07-0611H
Wellbore: Wellbore #1
Design: Plan #1 (6-20-12)

Local Co-ordinate Reference: Well Horsetail 07-0611H
TVD Reference: WELL @ 4942.2ft (RKB - 16.5')
MD Reference: WELL @ 4942.2ft (RKB - 16.5')
North Reference: True
Survey Calculation Method: Minimum Curvature

Planned Survey										
Measured Depth (ft)	Inclination (°)	Azimuth (°)	Vertical Depth (ft)	+N/-S (ft)	+E/-W (ft)	Vertical Section (ft)	Dogleg Rate (°/100ft)	Build Rate (°/100ft)	Turn Rate (°/100ft)	
12,560.0	90.00	359.54	5,980.0	6,803.3	-54.2	6,803.6	0.00	0.00	0.00	
12,600.0	90.00	359.54	5,980.0	6,843.3	-54.5	6,843.6	0.00	0.00	0.00	
12,640.0	90.00	359.54	5,980.0	6,883.3	-54.9	6,883.6	0.00	0.00	0.00	
12,680.0	90.00	359.54	5,980.0	6,923.3	-55.2	6,923.6	0.00	0.00	0.00	
12,720.0	90.00	359.54	5,980.0	6,963.3	-55.5	6,963.6	0.00	0.00	0.00	
12,760.0	90.00	359.54	5,980.0	7,003.3	-55.8	7,003.6	0.00	0.00	0.00	
12,800.0	90.00	359.54	5,980.0	7,043.3	-56.1	7,043.6	0.00	0.00	0.00	
12,840.0	90.00	359.54	5,980.0	7,083.3	-56.5	7,083.6	0.00	0.00	0.00	
12,870.5	90.00	359.54	5,980.0	7,113.8	-56.7	7,114.0	0.00	0.00	0.00	

Casing Points					
Measured Depth (ft)	Vertical Depth (ft)	Name		Casing Diameter (")	Hole Diameter (")
6,277.3	5,980.0	7"		7	8-3/4

Formations					
Measured Depth (ft)	Vertical Depth (ft)	Name	Lithology	Dip (°)	Dip Direction (°)
5,794.7	5,772.0	NIOBRARA		0.00	

Plan Annotations				
Measured Depth (ft)	Vertical Depth (ft)	Local Coordinates		Comment
		+N/-S (ft)	+E/-W (ft)	
6,277.3	5,980.0	520.8	-4.2	End of Build
8,302.0	5,980.0	2,545.5	-20.3	550' from Beffie #1 (Existing)
9,385.0	5,980.0	3,628.4	-28.9	550' from Beffie #1 (Existing)



Directional

Whiting Oil & Gas

SEC.7-T10N-R57W

Horsetail 07-0611H Pad Sec.7-T10N-R57W

Horsetail 07-0611H

Wellbore #1

Plan #1 (6-20-12)

Anticollision Report

16 January, 2013

Company:	Whiting Oil & Gas	Local Co-ordinate Reference:	Well Horsetail 07-0611H
Project:	SEC.7-T10N-R57W	TVD Reference:	WELL @ 4942.2ft (RKB - 16.5')
Reference Site:	Horsetail 07-0611H Pad Sec.7-T10N-R57W	MD Reference:	WELL @ 4942.2ft (RKB - 16.5')
Site Error:	0.0ft	North Reference:	True
Reference Well:	Horsetail 07-0611H	Survey Calculation Method:	Minimum Curvature
Well Error:	0.0ft	Output errors are at	2.00 sigma
Reference Wellbore	Wellbore #1	Database:	Landmark
Reference Design:	Plan #1 (6-20-12)	Offset TVD Reference:	Offset Datum

Reference	Plan #1 (6-20-12)		
Filter type:	NO GLOBAL FILTER: Using user defined selection & filtering criteria		
Interpolation Method:	MD Interval 100.0ft	Error Model:	ISCWSA
Depth Range:	Unlimited	Scan Method:	Closest Approach 3D
Results Limited by:	Maximum center-center distance of 10,000.0ft	Error Surface:	Elliptical Conic
Warning Levels Evaluated at:	2.00 Sigma		

Survey Tool Program	Date 12/11/2012			
From (ft)	To (ft)	Survey (Wellbore)	Tool Name	Description
0.0	12,870.5	Plan #1 (6-20-12) (Wellbore #1)	MWD	MWD - Standard

Summary						
Site Name	Reference Measured Depth (ft)	Offset Measured Depth (ft)	Distance Between Centres (ft)	Distance Between Ellipses (ft)	Separation Factor	Warning
Offset Well - Wellbore - Design						
Horsetail 07-0611H Pad Sec.7-T10N-R57W						
Beffie #1 (Exist)-Sec.6 - Wellbore #1 - Wellbore #1	8,843.7	6,000.3	96.3	-84.3	0.533	Level 1, CC, ES, SF

Offset Design Horsetail 07-0611H Pad Sec.7-T10N-R57W - Bieffie #1 (Exist)-Sec.6 - Wellbore #1 - Wellbore #1												Offset Site Error: 0.0 ft	
Survey Program: 6800-UNKNOWN												Offset Well Error: 0.0 ft	
Reference		Offset		Semi Major Axis			Distance						Warning
Measured Depth	Vertical Depth	Measured Depth	Vertical Depth	Reference	Offset	Highside Toolface	Offset Wellbore Centre		Between Centres	Between Ellipses	Minimum Separation	Separation Factor	
(ft)	(ft)	(ft)	(ft)	(ft)	(ft)	(°)	+N/-S (ft)	+E/-W (ft)	(ft)	(ft)	(ft)		
0.0	0.0	20.3	20.3	0.0	0.4	1.33	3,088.0	71.7	3,088.8	3,088.4	0.41	7,604.165	
100.0	100.0	120.3	120.3	0.1	2.4	1.33	3,088.0	71.7	3,088.8	3,086.3	2.52	1,226.408	
200.0	200.0	220.3	220.3	0.3	4.4	1.33	3,088.0	71.7	3,088.8	3,084.1	4.74	651.188	
300.0	300.0	320.3	320.3	0.6	6.4	1.33	3,088.0	71.7	3,088.8	3,081.8	6.97	443.278	
400.0	400.0	420.3	420.3	0.8	8.4	1.33	3,088.0	71.7	3,088.8	3,079.6	9.19	336.000	
500.0	500.0	520.3	520.3	1.0	10.4	1.33	3,088.0	71.7	3,088.8	3,077.4	11.42	270.530	
600.0	600.0	620.3	620.3	1.2	12.4	1.33	3,088.0	71.7	3,088.8	3,075.2	13.64	226.412	
700.0	700.0	720.3	720.3	1.5	14.4	1.33	3,088.0	71.7	3,088.8	3,072.9	15.87	194.667	
800.0	800.0	820.3	820.3	1.7	16.4	1.33	3,088.0	71.7	3,088.8	3,070.7	18.09	170.729	
900.0	900.0	920.3	920.3	1.9	18.4	1.33	3,088.0	71.7	3,088.8	3,068.5	20.32	152.033	
1,000.0	1,000.0	1,020.3	1,020.3	2.1	20.4	1.33	3,088.0	71.7	3,088.8	3,066.3	22.54	137.028	
1,100.0	1,100.0	1,120.3	1,120.3	2.4	22.4	1.33	3,088.0	71.7	3,088.8	3,064.0	24.77	124.719	
1,200.0	1,200.0	1,220.3	1,220.3	2.6	24.4	1.33	3,088.0	71.7	3,088.8	3,061.8	26.99	114.439	
1,300.0	1,300.0	1,320.3	1,320.3	2.8	26.4	1.33	3,088.0	71.7	3,088.8	3,059.6	29.22	105.724	
1,400.0	1,400.0	1,420.3	1,420.3	3.0	28.4	1.33	3,088.0	71.7	3,088.8	3,057.4	31.44	98.243	
1,500.0	1,500.0	1,520.3	1,520.3	3.3	30.4	1.33	3,088.0	71.7	3,088.8	3,055.1	33.67	91.751	
1,600.0	1,600.0	1,620.3	1,620.3	3.5	32.4	1.33	3,088.0	71.7	3,088.8	3,052.9	35.89	86.063	
1,700.0	1,700.0	1,720.3	1,720.3	3.7	34.4	1.33	3,088.0	71.7	3,088.8	3,050.7	38.11	81.040	
1,800.0	1,800.0	1,820.3	1,820.3	3.9	36.4	1.33	3,088.0	71.7	3,088.8	3,048.5	40.34	76.570	
1,900.0	1,900.0	1,920.3	1,920.3	4.2	38.4	1.33	3,088.0	71.7	3,088.8	3,046.2	42.56	72.568	
2,000.0	2,000.0	2,020.3	2,020.3	4.4	40.4	1.33	3,088.0	71.7	3,088.8	3,044.0	44.79	68.963	
2,100.0	2,100.0	2,120.3	2,120.3	4.6	42.4	1.33	3,088.0	71.7	3,088.8	3,041.8	47.01	65.700	
2,200.0	2,200.0	2,220.3	2,220.3	4.8	44.4	1.33	3,088.0	71.7	3,088.8	3,039.6	49.24	62.731	
2,300.0	2,300.0	2,320.3	2,320.3	5.1	46.4	1.33	3,088.0	71.7	3,088.8	3,037.3	51.46	60.020	
2,400.0	2,400.0	2,420.3	2,420.3	5.3	48.4	1.33	3,088.0	71.7	3,088.8	3,035.1	53.69	57.532	
2,500.0	2,500.0	2,520.3	2,520.3	5.5	50.4	1.33	3,088.0	71.7	3,088.8	3,032.9	55.91	55.243	

CC - Min centre to center distance or convergent point, SF - min separation factor, ES - min ellipse separation

Company:	Whiting Oil & Gas	Local Co-ordinate Reference:	Well Horsetail 07-0611H
Project:	SEC.7-T10N-R57W	TVD Reference:	WELL @ 4942.2ft (RKB - 16.5')
Reference Site:	Horsetail 07-0611H Pad Sec.7-T10N-R57W	MD Reference:	WELL @ 4942.2ft (RKB - 16.5')
Site Error:	0.0ft	North Reference:	True
Reference Well:	Horsetail 07-0611H	Survey Calculation Method:	Minimum Curvature
Well Error:	0.0ft	Output errors are at	2.00 sigma
Reference Wellbore	Wellbore #1	Database:	Landmark
Reference Design:	Plan #1 (6-20-12)	Offset TVD Reference:	Offset Datum

Offset Design													Offset Site Error:	0.0 ft
Survey Program: 6800-UNKNOWN													Offset Well Error:	0.0 ft
Reference		Offset		Semi Major Axis			Distance							Warning
Measured Depth (ft)	Vertical Depth (ft)	Measured Depth (ft)	Vertical Depth (ft)	Reference (ft)	Offset (ft)	Highside Toolface (°)	Offset Wellbore Centre +N/-S (ft)	+E/-W (ft)	Between Centres (ft)	Between Ellipses (ft)	Minimum Separation (ft)	Separation Factor		
2,600.0	2,600.0	2,620.3	2,620.3	5.7	52.4	1.33	3,088.0	71.7	3,088.8	3,030.7	58.14	53.129		
2,700.0	2,700.0	2,720.3	2,720.3	6.0	54.4	1.33	3,088.0	71.7	3,088.8	3,028.4	60.36	51.171		
2,800.0	2,800.0	2,820.3	2,820.3	6.2	56.4	1.33	3,088.0	71.7	3,088.8	3,026.2	62.59	49.352		
2,900.0	2,900.0	2,920.3	2,920.3	6.4	58.4	1.33	3,088.0	71.7	3,088.8	3,024.0	64.81	47.658		
3,000.0	3,000.0	3,020.3	3,020.3	6.6	60.4	1.33	3,088.0	71.7	3,088.8	3,021.8	67.04	46.076		
3,100.0	3,100.0	3,120.3	3,120.3	6.9	62.4	1.33	3,088.0	71.7	3,088.8	3,019.5	69.26	44.596		
3,200.0	3,200.0	3,220.3	3,220.3	7.1	64.4	1.33	3,088.0	71.7	3,088.8	3,017.3	71.49	43.208		
3,300.0	3,300.0	3,320.3	3,320.3	7.3	66.4	1.33	3,088.0	71.7	3,088.8	3,015.1	73.71	41.904		
3,400.0	3,400.0	3,420.3	3,420.3	7.5	68.4	1.33	3,088.0	71.7	3,088.8	3,012.9	75.94	40.677		
3,500.0	3,500.0	3,520.3	3,520.3	7.8	70.4	1.33	3,088.0	71.7	3,088.8	3,010.6	78.16	39.519		
3,600.0	3,600.0	3,620.3	3,620.3	8.0	72.4	1.33	3,088.0	71.7	3,088.8	3,008.4	80.39	38.425		
3,700.0	3,700.0	3,720.3	3,720.3	8.2	74.4	1.33	3,088.0	71.7	3,088.8	3,006.2	82.61	37.390		
3,800.0	3,800.0	3,820.3	3,820.3	8.4	76.4	1.33	3,088.0	71.7	3,088.8	3,004.0	84.83	36.410		
3,900.0	3,900.0	3,920.3	3,920.3	8.7	78.4	1.33	3,088.0	71.7	3,088.8	3,001.7	87.06	35.479		
4,000.0	4,000.0	4,020.3	4,020.3	8.9	80.4	1.33	3,088.0	71.7	3,088.8	2,999.5	89.28	34.595		
4,100.0	4,100.0	4,120.3	4,120.3	9.1	82.4	1.33	3,088.0	71.7	3,088.8	2,997.3	91.51	33.754		
4,200.0	4,200.0	4,220.3	4,220.3	9.3	84.4	1.33	3,088.0	71.7	3,088.8	2,995.1	93.73	32.953		
4,300.0	4,300.0	4,320.3	4,320.3	9.6	86.4	1.33	3,088.0	71.7	3,088.8	2,992.8	95.96	32.189		
4,400.0	4,400.0	4,420.3	4,420.3	9.8	88.4	1.33	3,088.0	71.7	3,088.8	2,990.6	98.18	31.460		
4,500.0	4,500.0	4,520.3	4,520.3	10.0	90.4	1.33	3,088.0	71.7	3,088.8	2,988.4	100.41	30.763		
4,600.0	4,600.0	4,620.3	4,620.3	10.2	92.4	1.33	3,088.0	71.7	3,088.8	2,986.2	102.63	30.096		
4,700.0	4,700.0	4,720.3	4,720.3	10.5	94.4	1.33	3,088.0	71.7	3,088.8	2,983.9	104.86	29.457		
4,800.0	4,800.0	4,820.3	4,820.3	10.7	96.4	1.33	3,088.0	71.7	3,088.8	2,981.7	107.08	28.845		
4,900.0	4,900.0	4,920.3	4,920.3	10.9	98.4	1.33	3,088.0	71.7	3,088.8	2,979.5	109.31	28.258		
5,000.0	5,000.0	5,020.3	5,020.3	11.1	100.4	1.33	3,088.0	71.7	3,088.8	2,977.3	111.53	27.694		
5,100.0	5,100.0	5,120.3	5,120.3	11.4	102.4	1.33	3,088.0	71.7	3,088.8	2,975.1	113.76	27.153		
5,200.0	5,200.0	5,220.3	5,220.3	11.6	104.4	1.33	3,088.0	71.7	3,088.8	2,972.8	115.98	26.632		
5,300.0	5,300.0	5,320.3	5,320.3	11.8	106.4	1.33	3,088.0	71.7	3,088.8	2,970.6	118.21	26.131		
5,400.0	5,400.0	5,420.3	5,420.3	12.0	108.4	1.33	3,088.0	71.7	3,088.8	2,968.4	120.43	25.648		
5,500.0	5,500.0	5,520.3	5,520.3	12.3	110.4	1.79	3,088.0	71.7	3,087.2	2,964.9	122.28	25.246		
5,600.0	5,598.3	5,618.6	5,618.6	12.5	112.4	1.86	3,088.0	71.7	3,069.9	2,949.5	120.39	25.499		
5,700.0	5,691.5	5,711.8	5,711.8	12.7	114.2	2.03	3,088.0	71.7	3,034.1	2,920.3	113.87	26.646		
5,800.0	5,776.2	5,796.5	5,796.5	13.0	115.9	2.33	3,088.0	71.7	2,981.2	2,878.4	102.82	28.995		
5,900.0	5,849.2	5,869.5	5,869.5	13.3	117.4	2.86	3,088.0	71.7	2,913.2	2,825.6	87.64	33.240		
6,000.0	5,907.9	5,928.2	5,928.2	13.9	118.6	3.83	3,088.0	71.7	2,832.5	2,763.4	69.11	40.987		
6,100.0	5,950.1	5,970.4	5,970.4	14.6	119.4	6.01	3,088.0	71.7	2,742.0	2,693.0	49.04	55.916		
6,200.0	5,974.3	5,994.6	5,994.6	15.5	119.9	13.84	3,088.0	71.7	2,645.2	2,604.4	40.80	64.838		
6,300.0	5,980.0	6,000.3	6,000.3	16.6	120.0	90.00	3,088.0	71.7	2,545.6	2,408.9	136.63	18.631		
6,400.0	5,980.0	6,000.3	6,000.3	17.8	120.0	90.00	3,088.0	71.7	2,445.6	2,307.8	137.86	17.741		
6,500.0	5,980.0	6,000.3	6,000.3	19.2	120.0	90.00	3,088.0	71.7	2,345.7	2,206.5	139.20	16.852		
6,600.0	5,980.0	6,000.3	6,000.3	20.6	120.0	90.00	3,088.0	71.7	2,245.8	2,105.2	140.63	15.970		
6,700.0	5,980.0	6,000.3	6,000.3	22.1	120.0	90.00	3,088.0	71.7	2,145.9	2,003.8	142.14	15.097		
6,800.0	5,980.0	6,000.3	6,000.3	23.7	120.0	90.00	3,088.0	71.7	2,046.0	1,902.3	143.71	14.237		
6,900.0	5,980.0	6,000.3	6,000.3	25.3	120.0	90.00	3,088.0	71.7	1,946.1	1,800.8	145.33	13.391		
7,000.0	5,980.0	6,000.3	6,000.3	27.0	120.0	90.00	3,088.0	71.7	1,846.3	1,699.3	146.99	12.560		
7,100.0	5,980.0	6,000.3	6,000.3	28.7	120.0	90.00	3,088.0	71.7	1,746.4	1,597.7	148.69	11.745		
7,200.0	5,980.0	6,000.3	6,000.3	30.4	120.0	90.00	3,088.0	71.7	1,646.6	1,496.2	150.41	10.947		
7,300.0	5,980.0	6,000.3	6,000.3	32.2	120.0	90.00	3,088.0	71.7	1,546.7	1,394.6	152.16	10.165		
7,400.0	5,980.0	6,000.3	6,000.3	33.9	120.0	90.00	3,088.0	71.7	1,447.0	1,293.0	153.93	9.400		
7,500.0	5,980.0	6,000.3	6,000.3	35.7	120.0	90.00	3,088.0	71.7	1,347.2	1,191.5	155.71	8.652		
7,600.0	5,980.0	6,000.3	6,000.3	37.5	120.0	90.00	3,088.0	71.7	1,247.5	1,090.0	157.51	7.920		
7,700.0	5,980.0	6,000.3	6,000.3	39.3	120.0	90.00	3,088.0	71.7	1,147.8	988.5	159.32	7.204		

CC - Min centre to center distance or convergent point, SF - min separation factor, ES - min ellipse separation

Horsetail 07-0611H Pad Sec.7-T10N-R57W - Bieffie #1 (Exist)-Sec.6 - Wellbore #1 - Wellbore #1													Offset Site Error:	0.0 ft
Survey Program: 6800-UNKNOWN													Offset Well Error:	0.0 ft
Reference		Offset		Semi Major Axis			Distance							
Measured Depth	Vertical Depth	Measured Depth	Vertical Depth	Reference	Offset	Highside Toolface	Offset Wellbore Centre		Between Centres	Between Ellipses	Minimum Separation	Separation Factor	Warning	
(ft)	(ft)	(ft)	(ft)	(ft)	(ft)	(°)	+N-S (ft)	+E-W (ft)	(ft)	(ft)	(ft)			
7,800.0	5,980.0	6,000.3	6,000.3	41.1	120.0	90.00	3,088.0	71.7	1,048.2	887.0	161.14	6.505		
7,900.0	5,980.0	6,000.3	6,000.3	43.0	120.0	90.00	3,088.0	71.7	948.6	785.7	162.98	5.821		
8,000.0	5,980.0	6,000.3	6,000.3	44.8	120.0	90.00	3,088.0	71.7	849.2	684.4	164.82	5.153		
8,100.0	5,980.0	6,000.3	6,000.3	46.7	120.0	90.00	3,088.0	71.7	750.0	583.3	166.66	4.500		
8,200.0	5,980.0	6,000.3	6,000.3	48.5	120.0	90.00	3,088.0	71.7	650.9	482.4	168.52	3.863		
8,300.0	5,980.0	6,000.3	6,000.3	50.4	120.0	90.00	3,088.0	71.7	552.2	381.8	170.38	3.241		
8,400.0	5,980.0	6,000.3	6,000.3	52.2	120.0	90.00	3,088.0	71.7	454.1	281.8	172.24	2.636		
8,500.0	5,980.0	6,000.3	6,000.3	54.1	120.0	90.00	3,088.0	71.7	357.0	182.9	174.11	2.050		
8,600.0	5,980.0	6,000.3	6,000.3	56.0	120.0	90.00	3,088.0	71.7	262.1	86.1	175.99	1.489	Level 3	
8,700.0	5,980.0	6,000.3	6,000.3	57.9	120.0	90.00	3,088.0	71.7	173.0	-4.9	177.87	0.973	Level 1	
8,800.0	5,980.0	6,000.3	6,000.3	59.7	120.0	90.00	3,088.0	71.7	105.7	-74.0	179.75	0.588	Level 1	
8,843.7	5,980.0	6,000.3	6,000.3	60.6	120.0	90.00	3,088.0	71.7	96.3	-84.3	180.57	0.533	Level 1, CC, ES, SF	
8,900.0	5,980.0	6,000.3	6,000.3	61.6	120.0	90.00	3,088.0	71.7	111.5	-70.1	181.63	0.614	Level 1	
9,000.0	5,980.0	6,000.3	6,000.3	63.5	120.0	90.00	3,088.0	71.7	183.5	0.0	183.52	1.000	Level 2	
9,100.0	5,980.0	6,000.3	6,000.3	65.4	120.0	90.00	3,088.0	71.7	273.7	88.3	185.41	1.476	Level 3	
9,200.0	5,980.0	6,000.3	6,000.3	67.3	120.0	90.00	3,088.0	71.7	369.0	181.7	187.30	1.970		
9,300.0	5,980.0	6,000.3	6,000.3	69.2	120.0	90.00	3,088.0	71.7	466.3	277.1	189.20	2.465		
9,400.0	5,980.0	6,000.3	6,000.3	71.1	120.0	90.00	3,088.0	71.7	564.5	373.4	191.09	2.954		
9,500.0	5,980.0	6,000.3	6,000.3	73.0	120.0	90.00	3,088.0	71.7	663.3	470.3	192.99	3.437		
9,600.0	5,980.0	6,000.3	6,000.3	74.9	120.0	90.00	3,088.0	71.7	762.4	567.5	194.89	3.912		
9,700.0	5,980.0	6,000.3	6,000.3	76.8	120.0	90.00	3,088.0	71.7	861.6	664.9	196.79	4.378		
9,800.0	5,980.0	6,000.3	6,000.3	78.7	120.0	90.00	3,088.0	71.7	961.1	762.4	198.70	4.837		
9,900.0	5,980.0	6,000.3	6,000.3	80.6	120.0	90.00	3,088.0	71.7	1,060.6	860.0	200.60	5.287		
10,000.0	5,980.0	6,000.3	6,000.3	82.5	120.0	90.00	3,088.0	71.7	1,160.3	957.7	202.51	5.729		
10,100.0	5,980.0	6,000.3	6,000.3	84.4	120.0	90.00	3,088.0	71.7	1,259.9	1,055.5	204.41	6.164		
10,200.0	5,980.0	6,000.3	6,000.3	86.3	120.0	90.00	3,088.0	71.7	1,359.7	1,153.3	206.32	6.590		
10,300.0	5,980.0	6,000.3	6,000.3	88.2	120.0	90.00	3,088.0	71.7	1,459.4	1,251.2	208.23	7.009		
10,400.0	5,980.0	6,000.3	6,000.3	90.1	120.0	90.00	3,088.0	71.7	1,559.2	1,349.1	210.14	7.420		
10,500.0	5,980.0	6,000.3	6,000.3	92.0	120.0	90.00	3,088.0	71.7	1,659.0	1,447.0	212.05	7.824		
10,600.0	5,980.0	6,000.3	6,000.3	94.0	120.0	90.00	3,088.0	71.7	1,758.9	1,544.9	213.96	8.221		
10,700.0	5,980.0	6,000.3	6,000.3	95.9	120.0	90.00	3,088.0	71.7	1,858.7	1,642.9	215.88	8.610		
10,800.0	5,980.0	6,000.3	6,000.3	97.8	120.0	90.00	3,088.0	71.7	1,958.6	1,740.8	217.79	8.993		
10,900.0	5,980.0	6,000.3	6,000.3	99.7	120.0	90.00	3,088.0	71.7	2,058.5	1,838.8	219.70	9.369		
11,000.0	5,980.0	6,000.3	6,000.3	101.6	120.0	90.00	3,088.0	71.7	2,158.4	1,936.8	221.62	9.739		
11,100.0	5,980.0	6,000.3	6,000.3	103.5	120.0	90.00	3,088.0	71.7	2,258.3	2,034.8	223.53	10.103		
11,200.0	5,980.0	6,000.3	6,000.3	105.4	120.0	90.00	3,088.0	71.7	2,358.2	2,132.8	225.45	10.460		
11,300.0	5,980.0	6,000.3	6,000.3	107.4	120.0	90.00	3,088.0	71.7	2,458.1	2,230.8	227.37	10.811		
11,400.0	5,980.0	6,000.3	6,000.3	109.3	120.0	90.00	3,088.0	71.7	2,558.1	2,328.8	229.28	11.157		
11,500.0	5,980.0	6,000.3	6,000.3	111.2	120.0	90.00	3,088.0	71.7	2,658.0	2,426.8	231.20	11.497		
11,600.0	5,980.0	6,000.3	6,000.3	113.1	120.0	90.00	3,088.0	71.7	2,757.9	2,524.8	233.12	11.831		
11,700.0	5,980.0	6,000.3	6,000.3	115.0	120.0	90.00	3,088.0	71.7	2,857.9	2,622.8	235.04	12.159		
11,800.0	5,980.0	6,000.3	6,000.3	116.9	120.0	90.00	3,088.0	71.7	2,957.8	2,720.9	236.96	12.483		
11,900.0	5,980.0	6,000.3	6,000.3	118.9	120.0	90.00	3,088.0	71.7	3,057.8	2,818.9	238.87	12.801		
12,000.0	5,980.0	6,000.3	6,000.3	120.8	120.0	90.00	3,088.0	71.7	3,157.7	2,916.9	240.79	13.114		
12,100.0	5,980.0	6,000.3	6,000.3	122.7	120.0	90.00	3,088.0	71.7	3,257.7	3,015.0	242.71	13.422		
12,200.0	5,980.0	6,000.3	6,000.3	124.6	120.0	90.00	3,088.0	71.7	3,357.6	3,113.0	244.64	13.725		
12,300.0	5,980.0	6,000.3	6,000.3	126.5	120.0	90.00	3,088.0	71.7	3,457.6	3,211.0	246.56	14.024		
12,400.0	5,980.0	6,000.3	6,000.3	128.5	120.0	90.00	3,088.0	71.7	3,557.6	3,309.1	248.48	14.317		
12,500.0	5,980.0	6,000.3	6,000.3	130.4	120.0	90.00	3,088.0	71.7	3,657.5	3,407.1	250.40	14.607		
12,600.0	5,980.0	6,000.3	6,000.3	132.3	120.0	90.00	3,088.0	71.7	3,757.5	3,505.2	252.32	14.892		
12,700.0	5,980.0	6,000.3	6,000.3	134.2	120.0	90.00	3,088.0	71.7	3,857.5	3,603.2	254.24	15.172		
12,800.0	5,980.0	6,000.3	6,000.3	136.2	120.0	90.00	3,088.0	71.7	3,957.4	3,701.3	256.16	15.449		

COMPASS 2003.21 Build 46

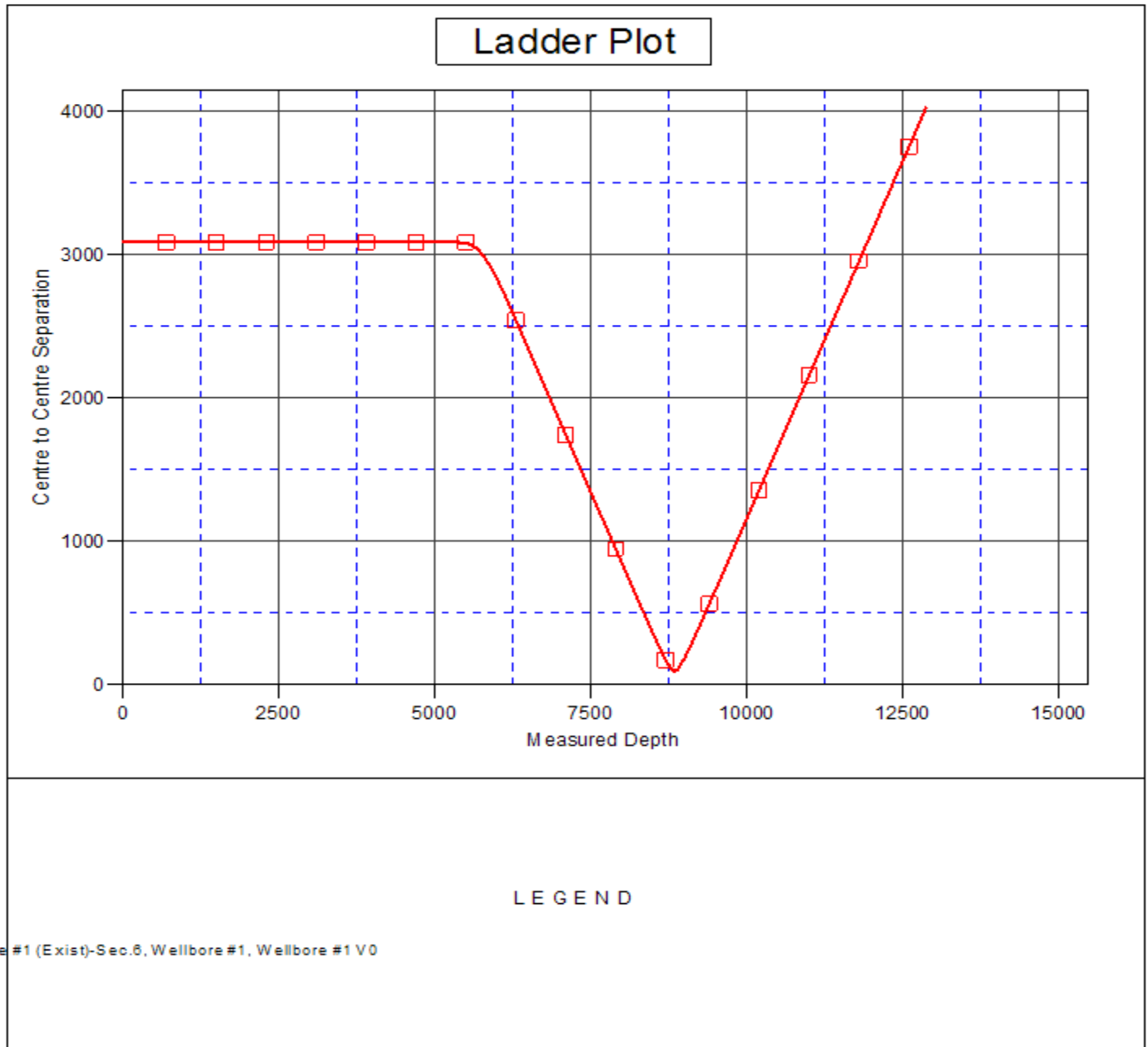
Company:	Whiting Oil & Gas	Local Co-ordinate Reference:	Well Horsetail 07-0611H
Project:	SEC.7-T10N-R57W	TVD Reference:	WELL @ 4942.2ft (RKB - 16.5')
Reference Site:	Horsetail 07-0611H Pad Sec.7-T10N-R57W	MD Reference:	WELL @ 4942.2ft (RKB - 16.5')
Site Error:	0.0ft	North Reference:	True
Reference Well:	Horsetail 07-0611H	Survey Calculation Method:	Minimum Curvature
Well Error:	0.0ft	Output errors are at	2.00 sigma
Reference Wellbore	Wellbore #1	Database:	Landmark
Reference Design:	Plan #1 (6-20-12)	Offset TVD Reference:	Offset Datum

Offset Design												Offset Site Error:	0.0 ft
Horsetail 07-0611H Pad Sec.7-T10N-R57W - Beffie #1 (Exist)-Sec.6 - Wellbore #1 - Wellbore #1												Offset Well Error:	0.0 ft
Survey Program: 6800-UNKNOWN													
Reference		Offset		Semi Major Axis			Distance						
Measured Depth (ft)	Vertical Depth (ft)	Measured Depth (ft)	Vertical Depth (ft)	Reference (ft)	Offset (ft)	Highside Toolface (°)	Offset Wellbore Centre +N/-S (ft)	+E/-W (ft)	Between Centres (ft)	Between Ellipses (ft)	Minimum Separation (ft)	Separation Factor	Warning
12,870.5	5,980.0	6,000.3	6,000.3	137.5	120.0	90.00	3,088.0	71.7	4,027.9	3,770.3	257.52	15.641	

Company:	Whiting Oil & Gas	Local Co-ordinate Reference:	Well Horsetail 07-0611H
Project:	SEC.7-T10N-R57W	TVD Reference:	WELL @ 4942.2ft (RKB - 16.5')
Reference Site:	Horsetail 07-0611H Pad Sec.7-T10N-R57W	MD Reference:	WELL @ 4942.2ft (RKB - 16.5')
Site Error:	0.0ft	North Reference:	True
Reference Well:	Horsetail 07-0611H	Survey Calculation Method:	Minimum Curvature
Well Error:	0.0ft	Output errors are at	2.00 sigma
Reference Wellbore	Wellbore #1	Database:	Landmark
Reference Design:	Plan #1 (6-20-12)	Offset TVD Reference:	Offset Datum

Reference Depths are relative to WELL @ 4942.2ft (RKB - 16.5')
Offset Depths are relative to Offset Datum
Central Meridian is -105.500000 °

Coordinates are relative to: Horsetail 07-0611H
Coordinate System is US State Plane 1983, Colorado Northern Zone
Grid Convergence at Surface is: 1.10°



Company:	Whiting Oil & Gas	Local Co-ordinate Reference:	Well Horsetail 07-0611H
Project:	SEC.7-T10N-R57W	TVD Reference:	WELL @ 4942.2ft (RKB - 16.5')
Reference Site:	Horsetail 07-0611H Pad Sec.7-T10N-R57W	MD Reference:	WELL @ 4942.2ft (RKB - 16.5')
Site Error:	0.0ft	North Reference:	True
Reference Well:	Horsetail 07-0611H	Survey Calculation Method:	Minimum Curvature
Well Error:	0.0ft	Output errors are at	2.00 sigma
Reference Wellbore	Wellbore #1	Database:	Landmark
Reference Design:	Plan #1 (6-20-12)	Offset TVD Reference:	Offset Datum

Reference Depths are relative to WELL @ 4942.2ft (RKB - 16.5')
Offset Depths are relative to Offset Datum
Central Meridian is -105.500000 °

Coordinates are relative to: Horsetail 07-0611H
Coordinate System is US State Plane 1983, Colorado Northern Zone
Grid Convergence at Surface is: 1.10°

