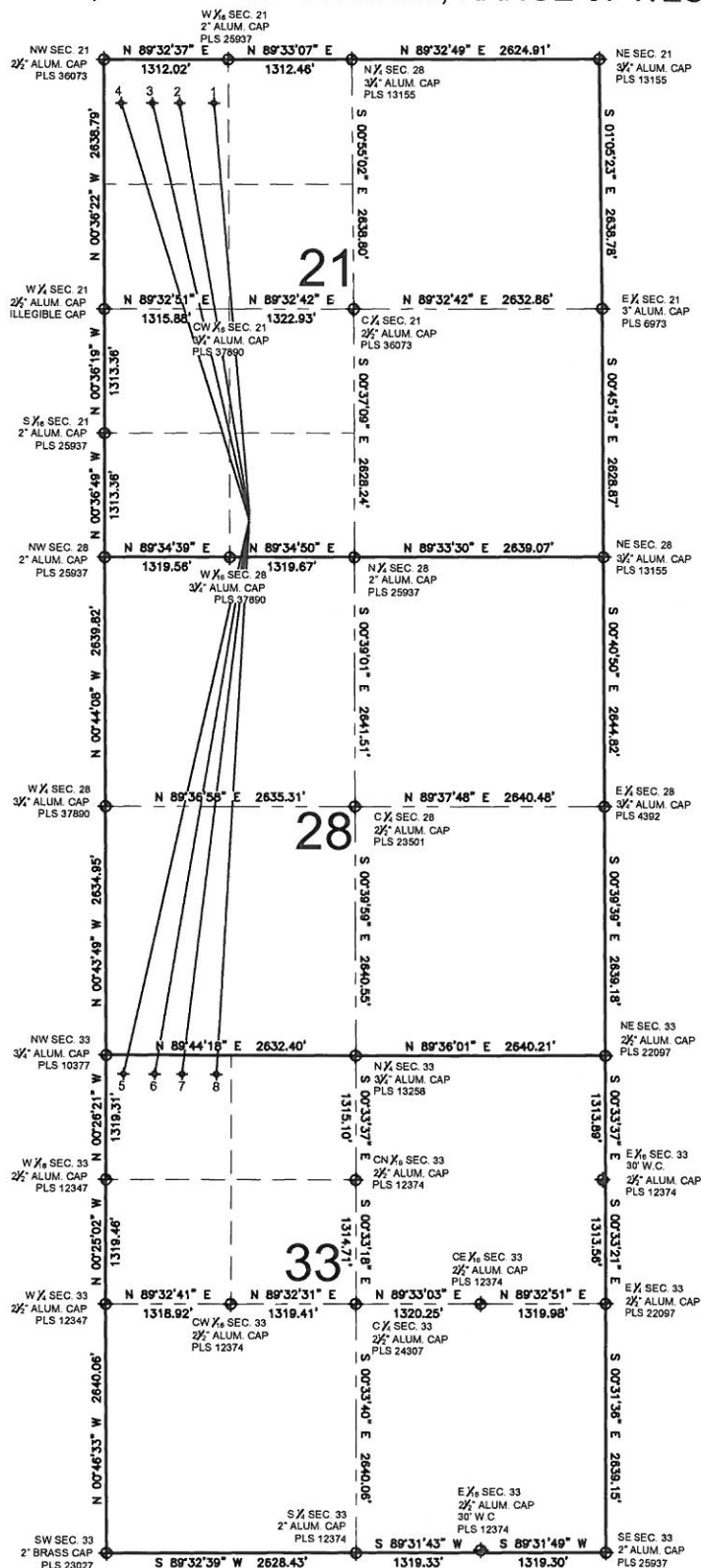


# HOWARD 30N-21HZ MULTI-WELL PLAN

SECTION 21, TOWNSHIP 1 NORTH, RANGE 67 WEST, 6TH P.M.



## NOTES:

1. HOWARD 29C-21HZ TO BE AT 491' FSL, 1523' FWL. BOTTOM HOLE AT 460' FNL & 1160' FWL.
2. HOWARD 4N-21HZ TO BE AT 481' FSL, 1523' FWL. BOTTOM HOLE AT 460' FNL & 802' FWL.
3. HOWARD 4C-21HZ TO BE AT 431' FSL, 1522' FWL. BOTTOM HOLE AT 460' FNL & 510' FWL.
4. HOWARD 30N-21HZ TO BE AT 401' FSL, 1521' FWL. BOTTOM HOLE AT 460' FNL & 180' FWL.
5. HOWARD 30C-33HZ TO BE AT 371' FSL, 1521' FWL. BOTTOM HOLE AT 200' FNL & 180' FWL.
6. HOWARD 4N-33HZ TO BE AT 341' FSL, 1520' FWL. BOTTOM HOLE AT 200' FNL & 510' FWL.
7. HOWARD 4C-33HZ TO BE AT 311' FSL, 1519' FWL. BOTTOM HOLE AT 200' FNL & 802' FWL.
8. HOWARD 29N-33HZ TO BE AT 281' FSL, 1519' FWL. BOTTOM HOLE AT 200' FNL & 1160' FWL.

## LEGEND

- ◆ = EXISTING MONUMENT
- = PROPOSED WELL
- ✕ = BOTTOM HOLE

PREPARED BY:

**PFS** llc  
Petroleum Field Services, LLC  
1801 W. 13th Ave.  
Denver, CO 80204

KERR-MCGEE OIL & GAS ONSHORE LP

FIELD DATE:  
11-05-12

DRAWING DATE:  
11-08-12

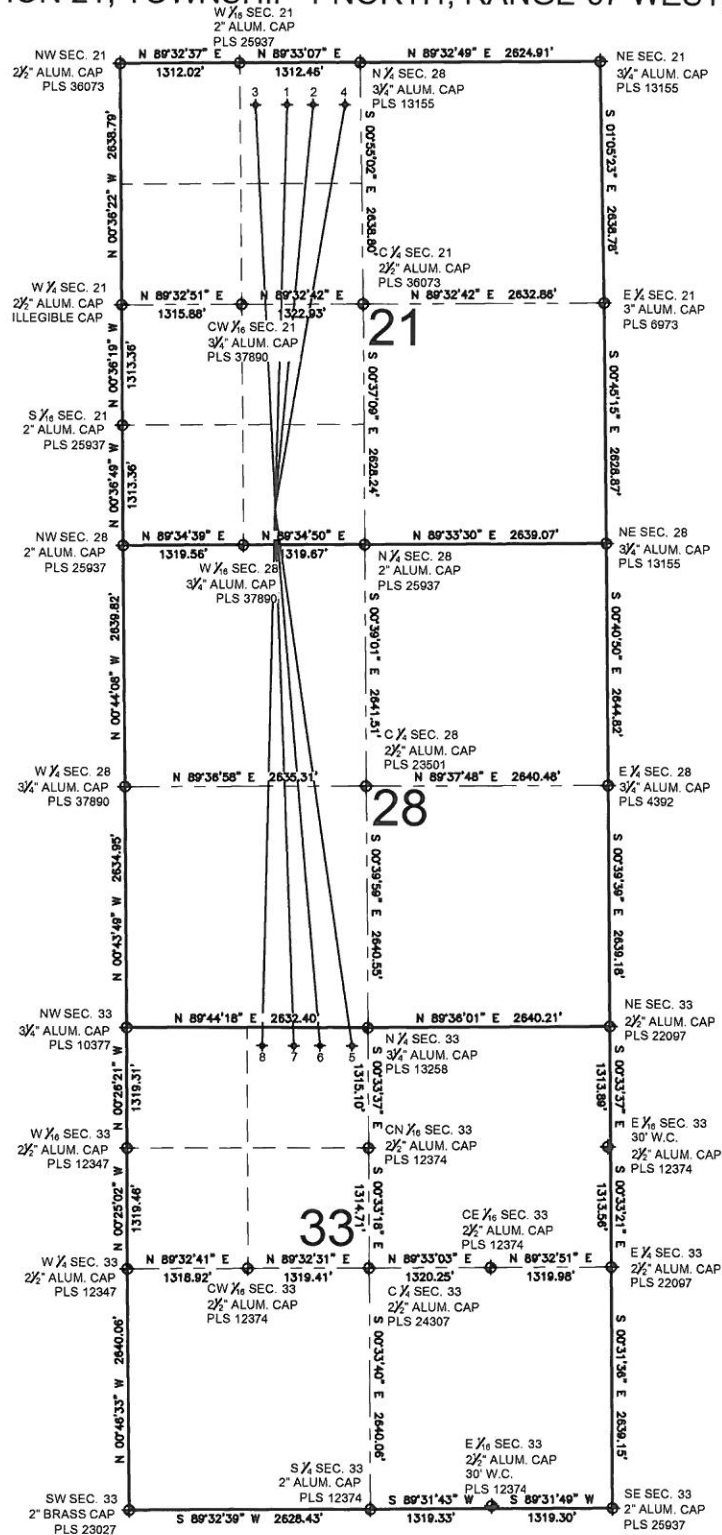
SURFACE LOCATION:

WELD COUNTY, COLORADO  
SE 1/4 SW 1/4, SEC. 21, T1N, R67W, 6TH P.M.



# HOWARD 3C-21HZ MULTI-WELL PLAN

SECTION 21, TOWNSHIP 1 NORTH, RANGE 67 WEST, 6TH P.M.



## NOTES:

1. HOWARD 3C-21HZ TO BE AT 492' FSL, 1673' FWL. BOTTOM HOLE AT 460' FNL & 1630' FWL.
2. HOWARD 3N-21HZ TO BE AT 462' FSL, 1673' FWL. BOTTOM HOLE AT 460' FNL & 2114' FWL.
3. HOWARD 29N-21HZ TO BE AT 432' FSL, 1672' FWL. BOTTOM HOLE AT 460' FNL & 1485' FWL.
4. HOWARD 28C-21HZ TO BE AT 402' FSL, 1671' FWL. BOTTOM HOLE AT 460' FNL & 2460' FWL.
5. HOWARD 28N-33HZ TO BE AT 372' FSL, 1671' FWL. BOTTOM HOLE AT 200' FNL & 2460' FWL.
6. HOWARD 3C-33HZ TO BE AT 342' FSL, 1670' FWL. BOTTOM HOLE AT 200' FNL & 2114' FWL.
7. HOWARD 3N-33HZ TO BE AT 312' FSL, 1669' FWL. BOTTOM HOLE AT 200' FNL & 1830' FWL.
8. HOWARD 29C-33HZ TO BE AT 282' FSL, 1669' FWL. BOTTOM HOLE AT 200' FNL & 1485' FWL.

PREPARED BY:

**PFS**



Petroleum Field Services, LLC  
1801 W. 13th Ave.  
Denver, CO 80204

KERR-MCGEE OIL & GAS ONSHORE LP

FIELD DATE:

11-05-12

DRAWING DATE:

11-08-12

SURFACE LOCATION:

WELD COUNTY, COLORADO

SE 1/4 SW 1/4, SEC. 21, T1N, R67W, 6TH P.M.

## LEGEND

- ◆ = EXISTING MONUMENT
- = PROPOSED WELL
- ✦ = BOTTOM HOLE



NTS