

1700 Broadway
Suite 650
Denver, Colorado 80290



Shannon Hartnett
Permitting Agent
Tel: 303.830.9893
E-mail: shartnett@gwogco.com

January 21, 2013

Colorado Oil and Gas Conservation Commission
The Chancery Building
1120 Lincoln Street, Suite 801
Denver, Colorado 80203

RE: **Proposed Wellbore Spacing Unit**
Campbell JF 17-6D (Surface 1512' FNL and 1525' FEL) Sec. 17 (Bottom 1320' FNL and 2240' FEL) Sec. 17
Campbell JF 17-14D (Surface 1512' FNL and 1480' FEL) Sec. 17 (Bottom 2640' FNL and 1320' FEL) Sec. 17
Campbell JF 17-7D (Surface 1513' FNL and 1450' FEL) Sec. 17 (Bottom 1320' FNL and 1320' FEL) Sec. 17

Niobrara/Codell New Drills
Township 2 North, Range 65 West, 6th P.M.
Section 17: SW/4NE/4
Weld County, Colorado

Dear Director:

Great Western Oil and Gas Company, LLC is planning to drill the above captioned boundary wells in accordance with the provisions of COGCC Rule 318(l)e(2).

Great Western proposed wellbore spacing units consists of:

- NE $\frac{1}{4}$ NW $\frac{1}{4}$, NW $\frac{1}{4}$ NE $\frac{1}{4}$, SE $\frac{1}{4}$ NW $\frac{1}{4}$, SE $\frac{1}{4}$ NE $\frac{1}{4}$ of Section 17 for **Campbell JF 17-6D**
- NE/4 of Section 17 for **Campbell JF 17-7D**
- SW $\frac{1}{4}$ NE $\frac{1}{4}$, SE $\frac{1}{4}$ SE $\frac{1}{4}$, NW $\frac{1}{4}$ SE $\frac{1}{4}$, & NE $\frac{1}{4}$ NE $\frac{1}{4}$ of Section 17 for **Campbell JF 17-14D**

Great Western Oil and Gas Company, LLC respectfully requests that the COGCC review the enclosed plat illustrating the proposed wellbore spacing unit.

Respectfully,

Shannon Hartnett
Permitting Agent
Great Western Oil and Gas Company, LLC

T2N, R65W, 6th P.M.

GREAT WESTERN OIL & GAS COMPANY

Well location, CAMPBELL JF #17-7D, located as shown in the SW 1/4 NE 1/4 of Section 17, T2N, R65W, 6th P.M., Weld County, Colorado.

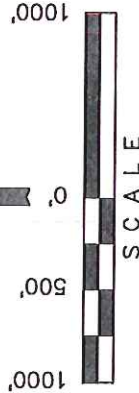
BASIS OF ELEVATION

USGS COOPERATIVE BASE NETWORK CONTROL STATION, DESIGNATION 'HUDSON'. NGS DATA SHEET LISTS THE NAVD 88 ELEVATION AS BEING 4999 FEET

BASIS OF BEARINGS

BASIS OF BEARINGS IS A G.P.S. OBSERVATION.

LINE TABLE		
LINE	DIRECTION	LENGTH
L1	N34°00'28"E	232.16'



CERTIFICATE

THIS IS TO CERTIFY THAT THE ABOVE PLAT WAS PREPARED FROM FIELD NOTES OF ACTUAL SURVEYS MADE BY ME OR UNDER MY SUPERVISION AND THAT THE SAME ARE TRUE AND CORRECT TO THE BEST OF MY KNOWLEDGE AND BELIEF.

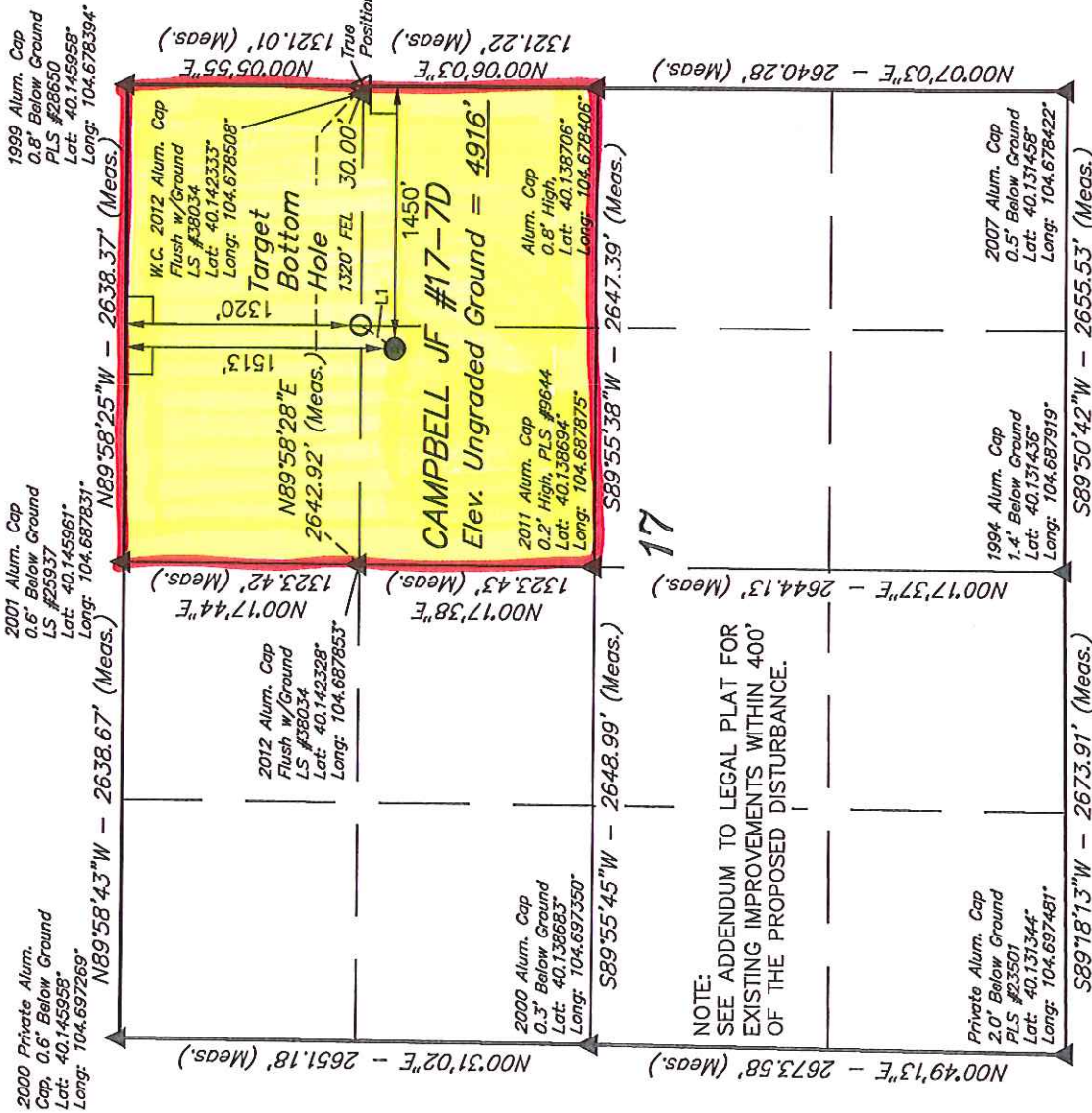
REGISTERED LAND SURVEYOR
REGISTRATION NO. 17452
STATE OF COLORADO
92-17-12

UNTIAH ENGINEERING & LAND SURVEYING

85 SOUTH 200 EAST - VERNAL, UTAH 84078

(435) 789-1017

SCALE 1" = 1000'	DATE SURVEYED: 12-14-12	DATE DRAWN: 12-17-12
PARTY Z.B. A.G. J.W.	REFERENCES G.L.O. PLAT	
WEATHER COLD	FILE GREAT WESTERN OIL & GAS COMPANY	



LEGEND:

- = 90° SYMBOL
- = PROPOSED WELL HEAD.
- ▲ = SECTION CORNERS LOCATED.
- △ = SECTION CORNERS RE-ESTABLISHED. (Not Set on Ground.)

PDOP = 1.8

NAD 83 (TARGET BOTTOM HOLE)		NAD 83 (SURFACE LOCATION)	
LATITUDE = 40°08'32.41"	(40.142336)	LATITUDE = 40°08'30.51"	(40.141808)
LONGITUDE = 104°40'59.24"	(104.683122)	LONGITUDE = 104°41'00.91"	(104.683586)
NAD 27 (TARGET BOTTOM HOLE)		NAD 27 (SURFACE LOCATION)	
LATITUDE = 40°08'32.47"	(40.142353)	LATITUDE = 40°08'30.57"	(40.141825)
LONGITUDE = 104°40'57.36"	(104.682600)	LONGITUDE = 104°40'59.03"	(104.683064)