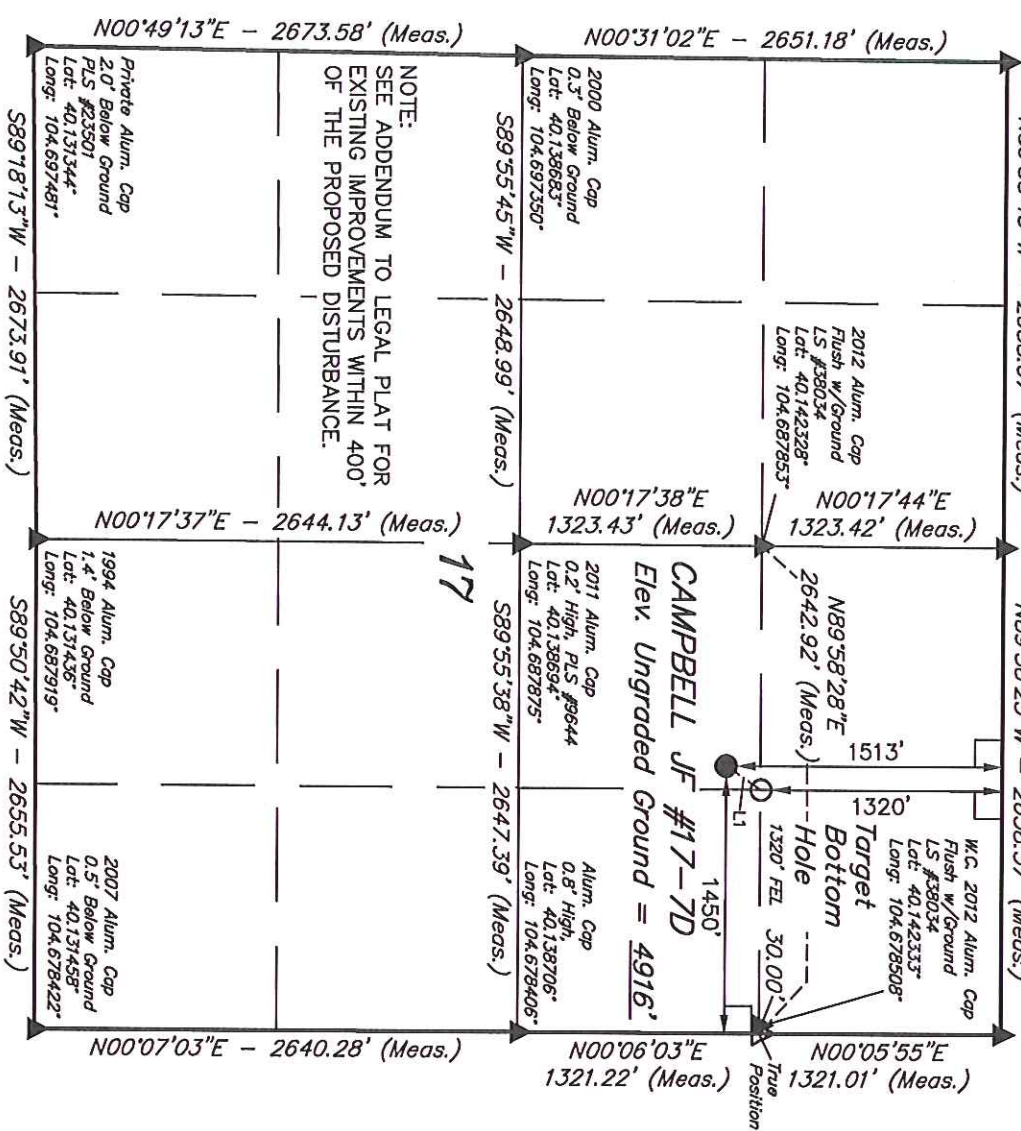


T2N, R65W, 6th P.M.

2000 Private Alum. Cap, 0.6' Below Ground
 Lot: 40.145958"
 Long: 104.697269"
 2001 Alum. Cap 0.6' Below Ground
 Lot: 40.145958"
 Long: 104.697269"
 1999 Alum. Cap 0.8' Below Ground
 Lot: 40.145958"
 Long: 104.697269"



NOTE:
 SEE ADDENDUM TO LEGAL PLAT FOR
 EXISTING IMPROVEMENTS WITHIN 400'
 OF THE PROPOSED DISTURBANCE.

LEGEND:

- = 90° SYMBOL
- ▲ = PROPOSED WELL HEAD.
- △ = SECTION CORNERS LOCATED.
- △ = SECTION CORNERS RE-ESTABLISHED. (Not Set on Ground.)

NAD 83 (TARGET BOTTOM HOLE)	NAD 83 (SURFACE LOCATION)
LATITUDE = 40°08'32.41" (40.142336)	LATITUDE = 40°08'30.51" (40.141808)
LONGITUDE = 104°40'59.24" (104.683122)	LONGITUDE = 104°41'00.91" (104.683586)
NAD 27 (TARGET BOTTOM HOLE)	NAD 27 (SURFACE LOCATION)
LATITUDE = 40°08'32.47" (40.142335)	LATITUDE = 40°08'30.57" (40.141825)
LONGITUDE = 104°40'57.36" (104.682600)	LONGITUDE = 104°40'59.03" (104.683064)

PDOP = 1.8

GREAT WESTERN OIL & GAS COMPANY

Well location, CAMPBELL JF #17-7D, located as shown in the SW 1/4 NE 1/4 of Section 17, T2N, R65W, 6th P.M., Weld County, Colorado.

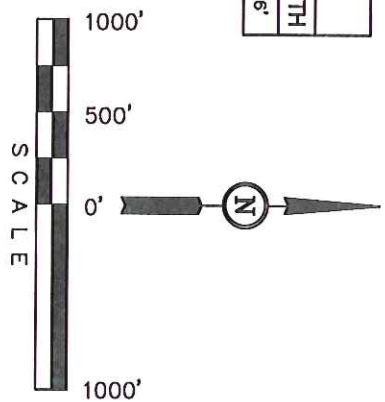
BASIS OF ELEVATION

USGS COOPERATIVE BASE NETWORK CONTROL STATION, DESIGNATION 'HUDSON'. NGS DATA SHEET LISTS THE NAVD 88 ELEVATION AS BEING 4999 FEET

BASIS OF BEARINGS

BASIS OF BEARINGS IS A G.P.S. OBSERVATION.

LINE	DIRECTION	LENGTH
L1	N34°00'28"E	232.16'



CERTIFICATE

THIS IS TO CERTIFY THAT THE ABOVE PLAT WAS PREPARED FROM FIELD NOTES OF ACTUAL SURVEYS MADE BY ME OR UNDER MY SUPERVISION AND THAT THE SAME ARE TRUE AND CORRECT TO THE BEST OF MY KNOWLEDGE AND BELIEF.

REGISTERED LAND SURVEYOR
 REGISTRATION NO. 10492
 STATE OF COLORADO
 92-17-12

UNTAR ENGINEERING & LAND SURVEYING
 85 SOUTH 200 EAST - VERNAL, UTAH 84078
 (435) 789-1017

SCALE	DATE SURVEYED:	DATE DRAWN:
1" = 1000'	12-14-12	12-17-12
PARTY	REFERENCES	FILE
Z.B. A.G. J.W.	G.L.O. PLAT	GREAT WESTERN OIL & GAS COMPANY
WEATHER		
COLD		