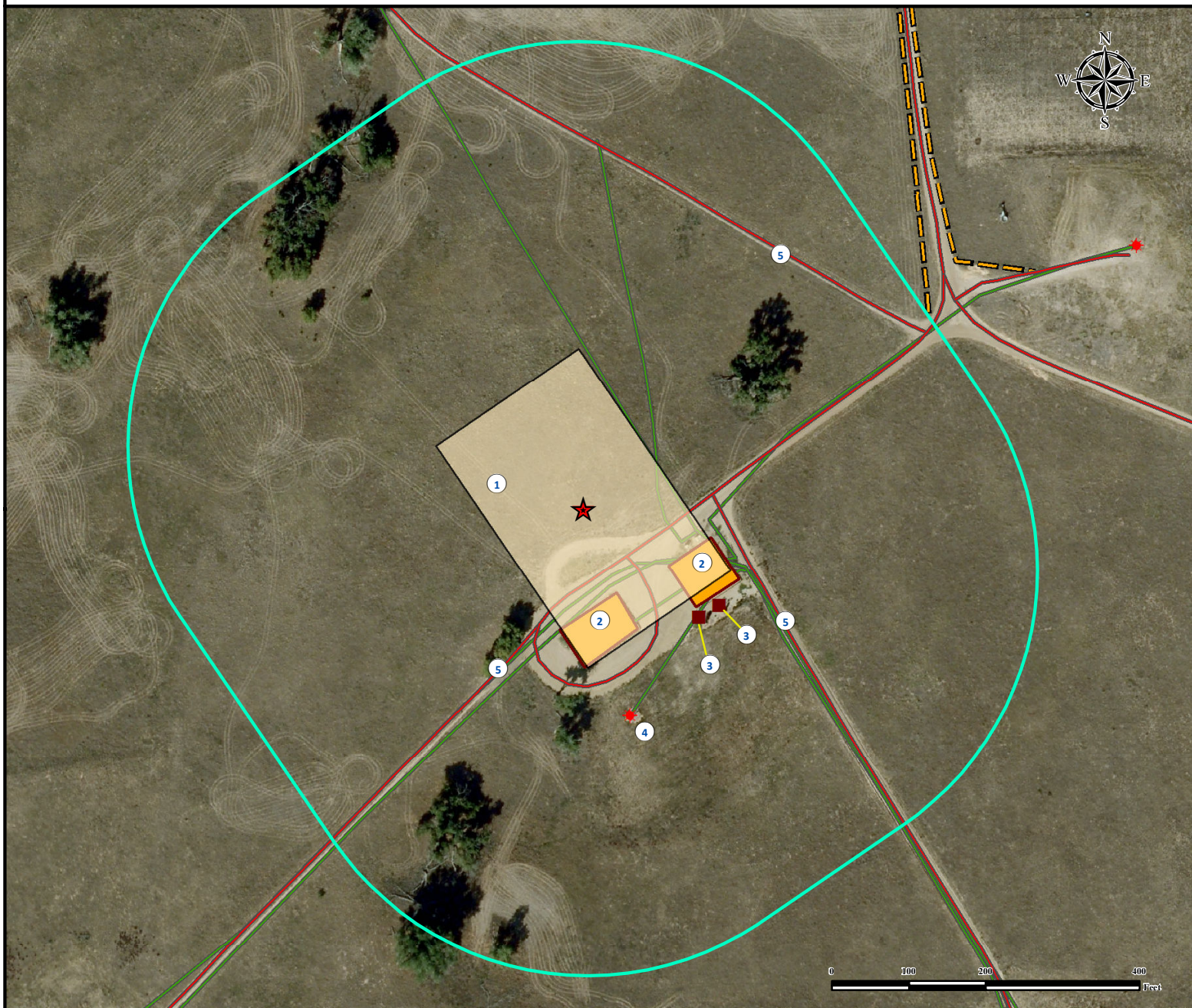


Location Drawing

USA FED 29N-36HZ FACILITY

NE¼ SW¼ SECTION 36, TOWNSHIP 3 NORTH, RANGE 66 WEST OF THE 6TH PRINCIPAL MERIDIAN



1. Proposed Facility USA FED 29N-36HZ FACILITY.

4. Existing well USA 19-36 (DIR) is $\pm 276'$ SE.

2. Existing facilities are $\pm 117'$ S and $\pm 133'$ SE (To be removed).

5. Private roads are $\pm 84'$ S, $\pm 170'$ SE and $\pm 420'$ NE.

3. Emissions control devices are $\pm 207'$ SE and $\pm 217'$ SE.

Legend

Proposed Facility	Facilities Enclosure	Reference Point	ECD
Existing Well	Disturbance Area	Private Road	
Fence	400' Radius	Underground Pipeline	

Reference Location

** All Measurements are Made from Reference Point **

Lat: 40.178673° Long: -104.730126° (NAD83)
Elevation: 5005 Feet

FSL: 1466' FWL: 1360'



Use our resources to find yours!
www.petro-fs.com
(303) 928-7128

Field Date: 01/19/2012
Drafting Date: 01/30/2012
Drafter: DMM
Checked By: BHF

Data Sources:
- Aerial courtesy of Anadarko
Petroleum Corporation

Surface Use: Rangeland

Prepared for:



KERR-MCGEE OIL & GAS ONSHORE LP