

# KERR-MCGEE OIL & GAS ONSHORE LP

Location: COLORADO Slot: SLOT#17 USA FED 29C-36HZ (642'FSL & 1875'FWL, SEC.36)  
Field: WELD COUNTY (KERR MCGEE) Well: USA FED 29C-36HZ  
Facility: SEC.36-T3N-R66W Wellbore: USA FED 29C-36HZ PWB

Plot reference wellpath is USA FED 29C-36HZ (PERMIT) PWP

True vertical depths are referenced to XTREME 6 (RKB)	Grid System: NAD83 / Lambert Colorado SP, Northern Zone (501), US feet
Measured depths are referenced to XTREME 6 (RKB)	North Reference: True north
XTREME 6 (RKB) to Mean Sea Level: 5022 feet	Scale: True distance
Mean Sea Level to Mud line (At Slot: SLOT#17 USA FED 29C-36HZ (642'FSL & 1875'FWL, SEC.36)): 0 feet	Depths are in feet
Coordinates are in feet referenced to Slot	Created by: wjlgf02 on 3/29/2012

## Location Information

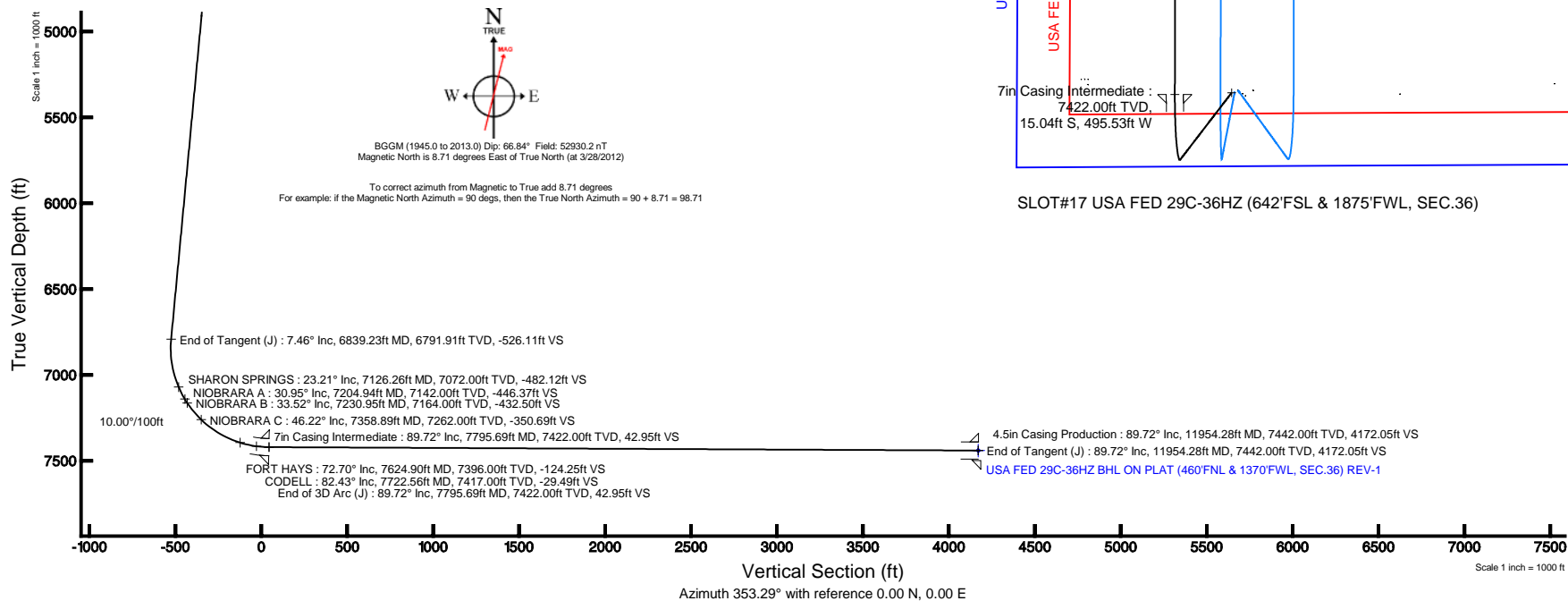
Facility Name				Grid East (US ft)	Grid North (US ft)	Latitude	Longitude
SEC.36-T3N-R66W				3214305.575	1310913.744	40°11'03.516"N	104°43'58.656"W
Slot	Local N (ft)	Local E (ft)	Grid East (US ft)	Grid North (US ft)	Latitude	Longitude	
SLOT#17 USA FED 29C-36HZ (642'FSL & 1875'FWL, SEC.36)	-2873.17	1306.70	3215637.018	1308052.116	40°10'35.123"N	104°43'41.822"W	
XTREME 6 (RKB) to Mud line (At Slot: SLOT#17 USA FED 29C-36HZ (642'FSL & 1875'FWL, SEC.36))						5022ft	
Mean Sea Level to Mud line (At Slot: SLOT#17 USA FED 29C-36HZ (642'FSL & 1875'FWL, SEC.36))						0ft	
XTREME 6 (RKB) to Mean Sea Level						5022ft	

## Well Profile Data

Design Comment	MD (ft)	Inc (°)	Az (°)	TVD (ft)	Local N (ft)	Local E (ft)	DLS (°/100ft)	VS (ft)
Tie On	17.00	0.000	217.500	17.00	0.00	0.00	0.00	0.00
End of Tangent	1000.00	0.000	217.500	1000.00	0.00	0.00	0.00	0.00
End of Build (J)	1373.00	7.460	217.500	1371.95	-19.24	-14.76	2.00	-17.38
End of Tangent (J)	6839.23	7.460	217.500	6791.91	-582.28	-446.80	0.00	-526.11
End of 3D Arc (J)	7795.69	89.724	0.113	7422.00	-15.03	-495.53	10.00	42.95
End of Tangent (J)	11954.28	89.724	0.113	7442.00	4143.49	-487.31	0.00	4172.05

## Targets

Name	MD (ft)	TVD (ft)	Local N (ft)	Local E (ft)	Grid East (US ft)	Grid North (US ft)	Latitude	Longitude
USA FED 13-36HZ PAD SECTION LINES		119.00	118.43	-1313.68	3214322.42	1308159.11	40°10'36.293"N	104°43'58.746"W
USA FED 13-36HZ PAD HARDLINES (460' SETBACKS)		7421.00	118.43	-1313.68	3214322.42	1308159.11	40°10'36.293"N	104°43'58.746"W
USA FED 29C-36HZ BHL ON PLAT (460'FNL & 1370'FWL, SEC.36) REV-1	11954.28	7442.00	4143.49	-487.31	3215113.69	1312191.03	40°11'16.089"N	104°43'48.101"W





# Planned Wellpath Report

USA FED 29C-36HZ (PERMIT) PWP

Page 1 of 5



## REFERENCE WELLPATH IDENTIFICATION

Operator	KERR-MCGEE OIL & GAS ONSHORE LP	Slot	SLOT#17 USA FED 29C-36HZ (642'FSL & 1875'FWL, SEC.36)
Area	COLORADO	Well	USA FED 29C-36HZ
Field	WELD COUNTY (KERR MCGEE)	Wellbore	USA FED 29C-36HZ PWB
Facility	SEC.36-T3N-R66W		

## REPORT SETUP INFORMATION

Projection System	NAD83 / Lambert Colorado SP, Northern Zone (501), US feet	Software System	WellArchitect® 3.0.2
North Reference	True	User	Wilsjef02
Scale	0.999958	Report Generated	3/29/2012 at 12:23:20
Convergence at slot	0.50° East	Database/Source file	WellArchitectDB/USA_FED_29C-36HZ_PWB.xml

## WELLPATH LOCATION

	Local coordinates		Grid coordinates		Geographic coordinates	
	North[ft]	East[ft]	Easting[US ft]	Northing[US ft]	Latitude	Longitude
Slot Location	-2873.17	1306.70	3215637.02	1308052.12	40°10'35.123"N	104°43'41.822"W
Facility Reference Pt			3214305.58	1310913.74	40°11'03.516"N	104°43'58.656"W
Field Reference Pt			3197771.84	1268891.29	40°04'09.600"N	104°47'36.000"W

## WELLPATH DATUM

Calculation method	Minimum curvature	XTREME 6 (RKB) to Facility Vertical Datum	5022.00ft
Horizontal Reference Pt	Slot	XTREME 6 (RKB) to Mean Sea Level	5022.00ft
Vertical Reference Pt	XTREME 6 (RKB)	XTREME 6 (RKB) to Mud Line at Slot (SLOT#17 USA FED 29C-36HZ (642'FSL & 1875'FWL, SEC.36))	5022.00ft
MD Reference Pt	XTREME 6 (RKB)	Section Origin	N 0.00, E 0.00 ft
Field Vertical Reference	Mean Sea Level	Section Azimuth	353.29°



# Planned Wellpath Report

USA FED 29C-36HZ (PERMIT) PWP

Page 2 of 5



## REFERENCE WELLPATH IDENTIFICATION

Operator	KERR-MCGEE OIL & GAS ONSHORE LP	Slot	SLOT#17 USA FED 29C-36HZ (642'FSL & 1875'FWL, SEC.36)
Area	COLORADO	Well	USA FED 29C-36HZ
Field	WELD COUNTY (KERR MCGEE)	Wellbore	USA FED 29C-36HZ PWB
Facility	SEC.36-T3N-R66W		

## WELLPATH DATA (134 stations) † = interpolated/extrapolated station

MD [ft]	Inclination [°]	Azimuth [°]	TVD [ft]	Vert Sect [ft]	North [ft]	East [ft]	Latitude	Longitude	DLS [°/100ft]	Comments
0.00†	0.000	217.500	0.00	0.00	0.00	0.00	40°10'35.123"N	104°43'41.822"W	0.00	
17.00	0.000	217.500	17.00	0.00	0.00	0.00	40°10'35.123"N	104°43'41.822"W	0.00	Tie On
117.00†	0.000	217.500	117.00	0.00	0.00	0.00	40°10'35.123"N	104°43'41.822"W	0.00	
217.00†	0.000	217.500	217.00	0.00	0.00	0.00	40°10'35.123"N	104°43'41.822"W	0.00	
317.00†	0.000	217.500	317.00	0.00	0.00	0.00	40°10'35.123"N	104°43'41.822"W	0.00	
417.00†	0.000	217.500	417.00	0.00	0.00	0.00	40°10'35.123"N	104°43'41.822"W	0.00	
517.00†	0.000	217.500	517.00	0.00	0.00	0.00	40°10'35.123"N	104°43'41.822"W	0.00	
617.00†	0.000	217.500	617.00	0.00	0.00	0.00	40°10'35.123"N	104°43'41.822"W	0.00	
717.00†	0.000	217.500	717.00	0.00	0.00	0.00	40°10'35.123"N	104°43'41.822"W	0.00	
817.00†	0.000	217.500	817.00	0.00	0.00	0.00	40°10'35.123"N	104°43'41.822"W	0.00	
917.00†	0.000	217.500	917.00	0.00	0.00	0.00	40°10'35.123"N	104°43'41.822"W	0.00	
1000.00	0.000	217.500	1000.00	0.00	0.00	0.00	40°10'35.123"N	104°43'41.822"W	0.00	End of Tangent
1017.00†	0.340	217.500	1017.00	-0.04	-0.04	-0.03	40°10'35.123"N	104°43'41.822"W	2.00	
1117.00†	2.340	217.500	1116.97	-1.71	-1.90	-1.45	40°10'35.104"N	104°43'41.841"W	2.00	
1217.00†	4.340	217.500	1216.79	-5.89	-6.52	-5.00	40°10'35.059"N	104°43'41.886"W	2.00	
1317.00†	6.340	217.500	1316.35	-12.56	-13.90	-10.67	40°10'34.986"N	104°43'41.959"W	2.00	
1373.00	7.460	217.500	1371.95	-17.38	-19.24	-14.76	40°10'34.933"N	104°43'42.012"W	2.00	End of Build (J)
1417.00†	7.460	217.500	1415.57	-21.48	-23.77	-18.24	40°10'34.888"N	104°43'42.057"W	0.00	
1517.00†	7.460	217.500	1514.73	-30.78	-34.07	-26.14	40°10'34.786"N	104°43'42.159"W	0.00	
1617.00†	7.460	217.500	1613.88	-40.09	-44.37	-34.05	40°10'34.685"N	104°43'42.261"W	0.00	
1717.00†	7.460	217.500	1713.04	-49.40	-54.67	-41.95	40°10'34.583"N	104°43'42.362"W	0.00	
1817.00†	7.460	217.500	1812.19	-58.70	-64.97	-49.85	40°10'34.481"N	104°43'42.464"W	0.00	
1917.00†	7.460	217.500	1911.34	-68.01	-75.27	-57.76	40°10'34.379"N	104°43'42.566"W	0.00	
2017.00†	7.460	217.500	2010.50	-77.32	-85.57	-65.66	40°10'34.277"N	104°43'42.668"W	0.00	
2117.00†	7.460	217.500	2109.65	-86.62	-95.87	-73.57	40°10'34.176"N	104°43'42.770"W	0.00	
2217.00†	7.460	217.500	2208.80	-95.93	-106.17	-81.47	40°10'34.074"N	104°43'42.872"W	0.00	
2317.00†	7.460	217.500	2307.96	-105.24	-116.47	-89.37	40°10'33.972"N	104°43'42.973"W	0.00	
2417.00†	7.460	217.500	2407.11	-114.54	-126.77	-97.28	40°10'33.870"N	104°43'43.075"W	0.00	
2517.00†	7.460	217.500	2506.26	-123.85	-137.07	-105.18	40°10'33.768"N	104°43'43.177"W	0.00	
2617.00†	7.460	217.500	2605.42	-133.16	-147.37	-113.08	40°10'33.667"N	104°43'43.279"W	0.00	
2717.00†	7.460	217.500	2704.57	-142.46	-157.68	-120.99	40°10'33.565"N	104°43'43.381"W	0.00	
2817.00†	7.460	217.500	2803.72	-151.77	-167.98	-128.89	40°10'33.463"N	104°43'43.482"W	0.00	
2917.00†	7.460	217.500	2902.88	-161.08	-178.28	-136.80	40°10'33.361"N	104°43'43.584"W	0.00	
3017.00†	7.460	217.500	3002.03	-170.38	-188.58	-144.70	40°10'33.259"N	104°43'43.686"W	0.00	
3117.00†	7.460	217.500	3101.19	-179.69	-198.88	-152.60	40°10'33.158"N	104°43'43.788"W	0.00	
3217.00†	7.460	217.500	3200.34	-189.00	-209.18	-160.51	40°10'33.056"N	104°43'43.890"W	0.00	
3317.00†	7.460	217.500	3299.49	-198.30	-219.48	-168.41	40°10'32.954"N	104°43'43.992"W	0.00	
3417.00†	7.460	217.500	3398.65	-207.61	-229.78	-176.31	40°10'32.852"N	104°43'44.093"W	0.00	
3517.00†	7.460	217.500	3497.80	-216.92	-240.08	-184.22	40°10'32.751"N	104°43'44.195"W	0.00	
3617.00†	7.460	217.500	3596.95	-226.22	-250.38	-192.12	40°10'32.649"N	104°43'44.297"W	0.00	
3717.00†	7.460	217.500	3696.11	-235.53	-260.68	-200.03	40°10'32.547"N	104°43'44.399"W	0.00	
3817.00†	7.460	217.500	3795.26	-244.84	-270.98	-207.93	40°10'32.445"N	104°43'44.501"W	0.00	
3917.00†	7.460	217.500	3894.41	-254.14	-281.28	-215.83	40°10'32.343"N	104°43'44.603"W	0.00	
4017.00†	7.460	217.500	3993.57	-263.45	-291.58	-223.74	40°10'32.242"N	104°43'44.704"W	0.00	
4051.73†	7.460	217.500	4028.00	-266.68	-295.16	-226.48	40°10'32.206"N	104°43'44.740"W	0.00	PARKMAN
4117.00†	7.460	217.500	4092.72	-272.76	-301.88	-231.64	40°10'32.140"N	104°43'44.806"W	0.00	
4217.00†	7.460	217.500	4191.87	-282.06	-312.18	-239.55	40°10'32.038"N	104°43'44.908"W	0.00	
4317.00†	7.460	217.500	4291.03	-291.37	-322.48	-247.45	40°10'31.936"N	104°43'45.010"W	0.00	
4417.00†	7.460	217.500	4390.18	-300.68	-332.78	-255.35	40°10'31.834"N	104°43'45.112"W	0.00	
4517.00†	7.460	217.500	4489.34	-309.99	-343.08	-263.26	40°10'31.733"N	104°43'45.213"W	0.00	
4588.27†	7.460	217.500	4560.00	-316.62	-350.42	-268.89	40°10'31.660"N	104°43'45.286"W	0.00	SUSSEX
4617.00†	7.460	217.500	4588.49	-319.29	-353.38	-271.16	40°10'31.631"N	104°43'45.315"W	0.00	
4717.00†	7.460	217.500	4687.64	-328.60	-363.68	-279.06	40°10'31.529"N	104°43'45.417"W	0.00	
4817.00†	7.460	217.500	4786.80	-337.91	-373.98	-286.97	40°10'31.427"N	104°43'45.519"W	0.00	
4917.00†	7.460	217.500	4885.95	-347.21	-384.28	-294.87	40°10'31.325"N	104°43'45.621"W	0.00	
5017.00†	7.460	217.500	4985.10	-356.52	-394.58	-302.78	40°10'31.224"N	104°43'45.723"W	0.00	
5117.00†	7.460	217.500	5084.26	-365.83	-404.89	-310.68	40°10'31.122"N	104°43'45.824"W	0.00	
5217.00†	7.460	217.500	5183.41	-375.13	-415.19	-318.58	40°10'31.020"N	104°43'45.926"W	0.00	
5317.00†	7.460	217.500	5282.56	-384.44	-425.49	-326.49	40°10'30.918"N	104°43'46.028"W	0.00	
5417.00†	7.460	217.500	5381.72	-393.75	-435.79	-334.39	40°10'30.817"N	104°43'46.130"W	0.00	



# Planned Wellpath Report

USA FED 29C-36HZ (PERMIT) PWP

Page 3 of 5



## REFERENCE WELLPATH IDENTIFICATION

Operator	KERR-MCGEE OIL & GAS ONSHORE LP	Slot	SLOT#17 USA FED 29C-36HZ (642'FSL & 1875'FWL, SEC.36)
Area	COLORADO	Well	USA FED 29C-36HZ
Field	WELD COUNTY (KERR MCGEE)	Wellbore	USA FED 29C-36HZ PWB
Facility	SEC.36-T3N-R66W		

## WELLPATH DATA (134 stations) † = interpolated/extrapolated station

MD [ft]	Inclination [°]	Azimuth [°]	TVD [ft]	Vert Sect [ft]	North [ft]	East [ft]	Latitude	Longitude	DLS [°/100ft]	Comments
5517.00†	7.460	217.500	5480.87	-403.05	-446.09	-342.29	40°10'30.715"N	104°43'46.232"W	0.00	
5617.00†	7.460	217.500	5580.02	-412.36	-456.39	-350.20	40°10'30.613"N	104°43'46.333"W	0.00	
5717.00†	7.460	217.500	5679.18	-421.67	-466.69	-358.10	40°10'30.511"N	104°43'46.435"W	0.00	
5817.00†	7.460	217.500	5778.33	-430.97	-476.99	-366.01	40°10'30.409"N	104°43'46.537"W	0.00	
5917.00†	7.460	217.500	5877.49	-440.28	-487.29	-373.91	40°10'30.308"N	104°43'46.639"W	0.00	
6017.00†	7.460	217.500	5976.64	-449.59	-497.59	-381.81	40°10'30.206"N	104°43'46.741"W	0.00	
6117.00†	7.460	217.500	6075.79	-458.89	-507.89	-389.72	40°10'30.104"N	104°43'46.843"W	0.00	
6217.00†	7.460	217.500	6174.95	-468.20	-518.19	-397.62	40°10'30.002"N	104°43'46.944"W	0.00	
6317.00†	7.460	217.500	6274.10	-477.51	-528.49	-405.52	40°10'29.900"N	104°43'47.046"W	0.00	
6417.00†	7.460	217.500	6373.25	-486.81	-538.79	-413.43	40°10'29.799"N	104°43'47.148"W	0.00	
6517.00†	7.460	217.500	6472.41	-496.12	-549.09	-421.33	40°10'29.697"N	104°43'47.250"W	0.00	
6617.00†	7.460	217.500	6571.56	-505.43	-559.39	-429.24	40°10'29.595"N	104°43'47.352"W	0.00	
6717.00†	7.460	217.500	6670.71	-514.73	-569.69	-437.14	40°10'29.493"N	104°43'47.453"W	0.00	
6817.00†	7.460	217.500	6769.87	-524.04	-579.99	-445.04	40°10'29.391"N	104°43'47.555"W	0.00	
6839.23	7.460	217.500	6791.91	-526.11	-582.28	-446.80	40°10'29.369"N	104°43'47.578"W	0.00	End of Tangent (J)
6917.00†	4.907	292.362	6869.33	-528.11	-585.03	-452.96	40°10'29.342"N	104°43'47.657"W	10.00	
7017.00†	12.683	339.458	6968.17	-515.34	-573.09	-460.79	40°10'29.460"N	104°43'47.758"W	10.00	
7117.00†	22.299	348.962	7063.46	-485.69	-544.11	-468.29	40°10'29.746"N	104°43'47.855"W	10.00	
7126.26†	23.205	349.453	7072.00	-482.12	-540.60	-468.96	40°10'29.781"N	104°43'47.863"W	10.00	SHARON SPRINGS
7204.94†	30.950	352.520	7142.00	-446.37	-505.24	-474.44	40°10'30.130"N	104°43'47.934"W	10.00	NIOBRARA A
7217.00†	32.143	352.869	7152.28	-440.06	-498.98	-475.24	40°10'30.192"N	104°43'47.944"W	10.00	
7230.95†	33.523	353.245	7164.00	-432.50	-491.48	-476.16	40°10'30.266"N	104°43'47.956"W	10.00	NIOBRARA B
7317.00†	42.055	355.082	7231.94	-379.83	-439.07	-481.43	40°10'30.784"N	104°43'48.024"W	10.00	
7358.89†	46.216	355.767	7262.00	-350.69	-410.00	-483.75	40°10'31.071"N	104°43'48.054"W	10.00	NIOBRARA C
7417.00†	51.995	356.575	7300.03	-306.83	-366.19	-486.67	40°10'31.504"N	104°43'48.092"W	10.00	
7517.00†	61.950	357.708	7354.46	-223.29	-282.55	-490.80	40°10'32.331"N	104°43'48.145"W	10.00	
7617.00†	71.913	358.648	7393.60	-131.74	-190.71	-493.69	40°10'33.238"N	104°43'48.182"W	10.00	
7624.90†	72.700	358.717	7396.00	-124.25	-183.19	-493.86	40°10'33.313"N	104°43'48.184"W	10.00	FORT HAYS
7717.00†	81.880	359.486	7416.24	-34.96	-93.45	-495.26	40°10'34.199"N	104°43'48.202"W	10.00	
7722.56†	82.434	359.530	7417.00	-29.49	-87.95	-495.31	40°10'34.254"N	104°43'48.203"W	10.00	CODELL
7795.69	89.724	0.113	7422.00	42.95	-15.03	-495.53	40°10'34.974"N	104°43'48.206"W	10.00	End of 3D Arc (J)
7817.00†	89.724	0.113	7422.10	64.11	6.27	-495.49	40°10'35.185"N	104°43'48.205"W	0.00	
7917.00†	89.724	0.113	7422.58	163.40	106.27	-495.29	40°10'36.173"N	104°43'48.203"W	0.00	
8017.00†	89.724	0.113	7423.06	262.69	206.27	-495.10	40°10'37.161"N	104°43'48.200"W	0.00	
8117.00†	89.724	0.113	7423.54	361.98	306.27	-494.90	40°10'38.150"N	104°43'48.198"W	0.00	
8217.00†	89.724	0.113	7424.02	461.27	406.27	-494.70	40°10'39.138"N	104°43'48.195"W	0.00	
8317.00†	89.724	0.113	7424.51	560.56	506.27	-494.50	40°10'40.126"N	104°43'48.193"W	0.00	
8417.00†	89.724	0.113	7424.99	659.85	606.27	-494.31	40°10'41.114"N	104°43'48.190"W	0.00	
8517.00†	89.724	0.113	7425.47	759.14	706.26	-494.11	40°10'42.102"N	104°43'48.188"W	0.00	
8617.00†	89.724	0.113	7425.95	858.43	806.26	-493.91	40°10'43.090"N	104°43'48.185"W	0.00	
8717.00†	89.724	0.113	7426.43	957.73	906.26	-493.71	40°10'44.079"N	104°43'48.183"W	0.00	
8817.00†	89.724	0.113	7426.91	1057.02	1006.26	-493.51	40°10'45.067"N	104°43'48.180"W	0.00	
8917.00†	89.724	0.113	7427.39	1156.31	1106.26	-493.32	40°10'46.055"N	104°43'48.178"W	0.00	
9017.00†	89.724	0.113	7427.87	1255.60	1206.26	-493.12	40°10'47.043"N	104°43'48.175"W	0.00	
9117.00†	89.724	0.113	7428.35	1354.89	1306.26	-492.92	40°10'48.031"N	104°43'48.173"W	0.00	
9217.00†	89.724	0.113	7428.83	1454.18	1406.25	-492.72	40°10'49.020"N	104°43'48.170"W	0.00	
9317.00†	89.724	0.113	7429.32	1553.47	1506.25	-492.53	40°10'50.008"N	104°43'48.168"W	0.00	
9417.00†	89.724	0.113	7429.80	1652.76	1606.25	-492.33	40°10'50.996"N	104°43'48.165"W	0.00	
9517.00†	89.724	0.113	7430.28	1752.05	1706.25	-492.13	40°10'51.984"N	104°43'48.162"W	0.00	
9617.00†	89.724	0.113	7430.76	1851.35	1806.25	-491.93	40°10'52.972"N	104°43'48.160"W	0.00	
9717.00†	89.724	0.113	7431.24	1950.64	1906.25	-491.73	40°10'53.961"N	104°43'48.157"W	0.00	
9817.00†	89.724	0.113	7431.72	2049.93	2006.25	-491.54	40°10'54.949"N	104°43'48.155"W	0.00	
9917.00†	89.724	0.113	7432.20	2149.22	2106.25	-491.34	40°10'55.937"N	104°43'48.152"W	0.00	
10017.00†	89.724	0.113	7432.68	2248.51	2206.24	-491.14	40°10'56.925"N	104°43'48.150"W	0.00	
10117.00†	89.724	0.113	7433.16	2347.80	2306.24	-490.94	40°10'57.913"N	104°43'48.147"W	0.00	
10217.00†	89.724	0.113	7433.64	2447.09	2406.24	-490.75	40°10'58.901"N	104°43'48.145"W	0.00	
10317.00†	89.724	0.113	7434.12	2546.38	2506.24	-490.55	40°10'59.890"N	104°43'48.142"W	0.00	
10417.00†	89.724	0.113	7434.61	2645.67	2606.24	-490.35	40°11'00.878"N	104°43'48.140"W	0.00	
10517.00†	89.724	0.113	7435.09	2744.96	2706.24	-490.15	40°11'01.866"N	104°43'48.137"W	0.00	
10617.00†	89.724	0.113	7435.57	2844.26	2806.24	-489.95	40°11'02.854"N	104°43'48.135"W	0.00	



# Planned Wellpath Report

USA FED 29C-36HZ (PERMIT) PWP

Page 4 of 5



## REFERENCE WELLPATH IDENTIFICATION

Operator	KERR-MCGEE OIL & GAS ONSHORE LP	Slot	SLOT#17 USA FED 29C-36HZ (642'FSL & 1875'FWL, SEC.36)
Area	COLORADO	Well	USA FED 29C-36HZ
Field	WELD COUNTY (KERR MCGEE)	Wellbore	USA FED 29C-36HZ PWB
Facility	SEC.36-T3N-R66W		

## WELLPATH DATA (134 stations) † = interpolated/extrapolated station

MD [ft]	Inclination [°]	Azimuth [°]	TVD [ft]	Vert Sect [ft]	North [ft]	East [ft]	Latitude	Longitude	DLS [°/100ft]	Comments
10717.00†	89.724	0.113	7436.05	2943.55	2906.23	-489.76	40°11'03.842"N	104°43'48.132"W	0.00	
10817.00†	89.724	0.113	7436.53	3042.84	3006.23	-489.56	40°11'04.831"N	104°43'48.130"W	0.00	
10917.00†	89.724	0.113	7437.01	3142.13	3106.23	-489.36	40°11'05.819"N	104°43'48.127"W	0.00	
11017.00†	89.724	0.113	7437.49	3241.42	3206.23	-489.16	40°11'06.807"N	104°43'48.125"W	0.00	
11117.00†	89.724	0.113	7437.97	3340.71	3306.23	-488.97	40°11'07.795"N	104°43'48.122"W	0.00	
11217.00†	89.724	0.113	7438.45	3440.00	3406.23	-488.77	40°11'08.783"N	104°43'48.120"W	0.00	
11317.00†	89.724	0.113	7438.93	3539.29	3506.23	-488.57	40°11'09.772"N	104°43'48.117"W	0.00	
11417.00†	89.724	0.113	7439.42	3638.58	3606.23	-488.37	40°11'10.760"N	104°43'48.115"W	0.00	
11517.00†	89.724	0.113	7439.90	3737.88	3706.22	-488.18	40°11'11.748"N	104°43'48.112"W	0.00	
11617.00†	89.724	0.113	7440.38	3837.17	3806.22	-487.98	40°11'12.736"N	104°43'48.110"W	0.00	
11717.00†	89.724	0.113	7440.86	3936.46	3906.22	-487.78	40°11'13.724"N	104°43'48.107"W	0.00	
11817.00†	89.724	0.113	7441.34	4035.75	4006.22	-487.58	40°11'14.712"N	104°43'48.104"W	0.00	
11917.00†	89.724	0.113	7441.82	4135.04	4106.22	-487.38	40°11'15.701"N	104°43'48.102"W	0.00	
11954.28	89.724	0.113	7442.00 <sup>1</sup>	4172.05	4143.49	-487.31	40°11'16.069"N	104°43'48.101"W	0.00	End of Tangent (J)

## HOLE & CASING SECTIONS - Ref Wellbore: USA FED 29C-36HZ PWB Ref Wellpath: USA FED 29C-36HZ (PERMIT) PWP

String/Diameter	Start MD [ft]	End MD [ft]	Interval [ft]	Start TVD [ft]	End TVD [ft]	Start N/S [ft]	Start E/W [ft]	End N/S [ft]	End E/W [ft]
13.5in Open Hole	17.00	800.00	783.00	17.00	800.00	0.00	0.00	0.00	0.00
9.625in Casing Surface	17.00	800.00	783.00	17.00	800.00	0.00	0.00	0.00	0.00
8.75in Open Hole	800.00	7795.69	6995.69	800.00	7422.00	0.00	0.00	-15.04	-495.53
7in Casing Intermediate	17.00	7795.69	7778.69	17.00	7422.00	0.00	0.00	-15.04	-495.53
6.125in Open Hole	7795.69	11954.28	4158.59	7422.00	7442.00	-15.04	-495.53	4143.49	-487.31
4.5in Casing Production	17.00	11954.28	11937.28	17.00	7442.00	0.00	0.00	4143.49	-487.31

## TARGETS

Name	MD [ft]	TVD [ft]	North [ft]	East [ft]	Grid East [US ft]	Grid North [US ft]	Latitude	Longitude	Shape
USA FED 13-36HZ PAD SECTION LINES		-19.00	118.43	-1313.68	3214322.42	1308159.11	40°10'36.293"N	104°43'58.746"W	polygon
USA FED 13-36HZ PAD HARDLINES (460' SETBACKS)		7421.00	118.43	-1313.68	3214322.42	1308159.11	40°10'36.293"N	104°43'58.746"W	polygon
1) USA FED 29C-36HZ BHL ON PLAT (460'FNL & 1370'FWL, SEC.36) REV-1	11954.28	7442.00	4143.49	-487.31	3215113.69	1312191.03	40°11'16.069"N	104°43'48.101"W	point

## SURVEY PROGRAM - Ref Wellbore: USA FED 29C-36HZ PWB Ref Wellpath: USA FED 29C-36HZ (PERMIT) PWP

Start MD [ft]	End MD [ft]	Positional Uncertainty Model	Log Name/Comment	Wellbore
17.00	11954.28	NaviTrak (Standard)		USA FED 29C-36HZ PWB



# Planned Wellpath Report

USA FED 29C-36HZ (PERMIT) PWP

Page 5 of 5



## REFERENCE WELLPATH IDENTIFICATION

Operator	KERR-MCGEE OIL & GAS ONSHORE LP	Slot	SLOT#17 USA FED 29C-36HZ (642'FSL & 1875'FWL, SEC.36)
Area	COLORADO	Well	USA FED 29C-36HZ
Field	WELD COUNTY (KERR MCGEE)	Wellbore	USA FED 29C-36HZ PWB
Facility	SEC.36-T3N-R66W		

## WELLPATH COMMENTS

MD [ft]	Inclination [°]	Azimuth [°]	TVD [ft]	Comment
4051.73	7.460	217.500	4028.00	PARKMAN
4588.27	7.460	217.500	4560.00	SUSSEX
7126.26	23.205	349.453	7072.00	SHARON SPRINGS
7204.94	30.950	352.520	7142.00	NIOBRARA A
7230.95	33.523	353.245	7164.00	NIOBRARA B
7358.89	46.216	355.767	7262.00	NIOBRARA C
7624.90	72.700	358.717	7396.00	FORT HAYS
7722.56	82.434	359.530	7417.00	CODELL