

KERR-MCGEE OIL & GAS ONSHORE LP

Location: COLORADO Slot: SLOT#18 USA FED 03N-36HZ (653'FSL & 1903'FWL, SEC.36)
Field: WELD COUNTY (KERR MCGEE) Well: USA FED 03N-36HZ
Facility: SEC.36-T3N-R66W Wellbore: USA FED 03N-36HZ PWB

Plot reference wellpath is USA FED 03N-36HZ (PERMIT REV-A.0) PWB

True vertical depths are referenced to XTREME 6 (RKB)	Grid System: NAD83 / Lambert Colorado SP, Northern Zone (501), US feet
Measured depths are referenced to XTREME 6 (RKB)	North Reference: True north
XTREME 6 (RKB) to Mean Sea Level: 5022 feet	Scale: True distance
Mean Sea Level to Mud line (At Slot: SLOT#18 USA FED 03N-36HZ (653'FSL & 1903'FWL, SEC.36)): 0 feet	Depths are in feet
Coordinates are in feet referenced to Slot	Created by: marqantc on 1/16/2013

Location Information

Facility Name				Grid East (US ft)	Grid North (US ft)	Latitude	Longitude
SEC.36-T3N-R66W				3214305.575	1310913.744	40°11'03.516"N	104°43'58.656"W
Slot	Local N (ft)	Local E (ft)	Grid East (US ft)	Grid North (US ft)	Latitude	Longitude	
SLOT#18 USA FED 03N-36HZ (653'FSL & 1903'FWL, SEC.36)	-2862.24	1334.64	3215664.864	1308063.287	40°10'35.231"N	104°43'41.462"W	
XTREME 6 (RKB) to Mud line (At Slot: SLOT#18 USA FED 03N-36HZ (653'FSL & 1903'FWL, SEC.36))						5022ft	
Mean Sea Level to Mud line (At Slot: SLOT#18 USA FED 03N-36HZ (653'FSL & 1903'FWL, SEC.36))						0ft	
XTREME 6 (RKB) to Mean Sea Level						5022ft	

Survey Program

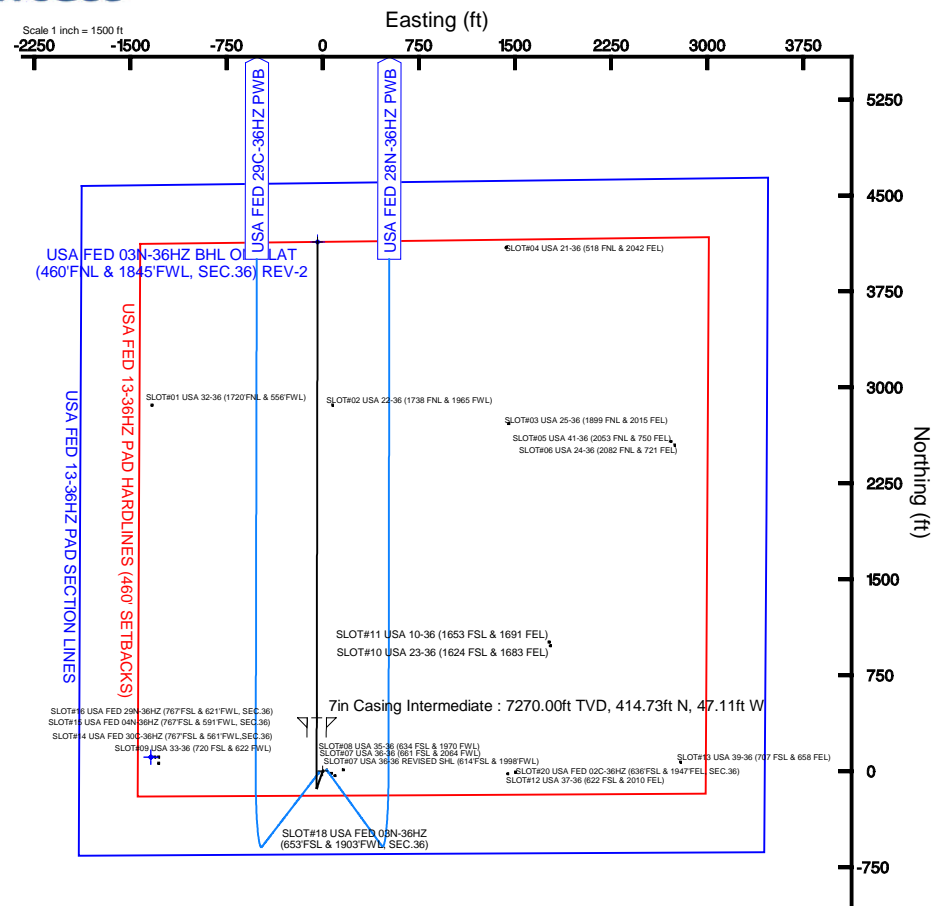
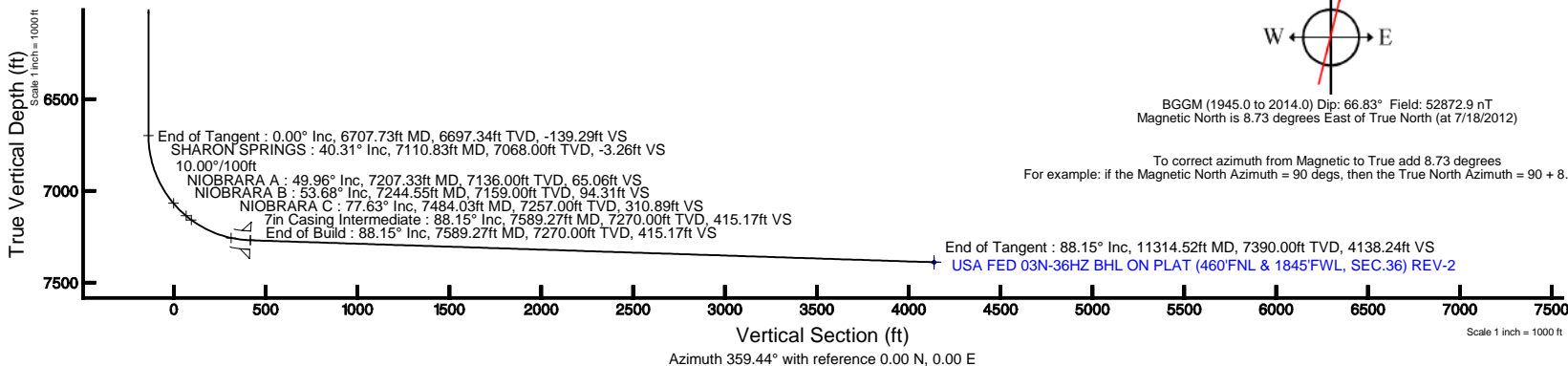
Start MD (ft)	End MD (ft)	Tool	Model	Log Name/Comment	Wellbore
17.00	7589.27	NavitTrak	NavitTrak (Standard)		USA FED 03N-36HZ PWB
7589.27	11314.52	OnTrak	OnTrak (Standard)		USA FED 03N-36HZ PWB

Well Profile Data

Design Comment	MD (ft)	Inc (°)	Az (°)	TVD (ft)	Local N (ft)	Local E (ft)	DLS (°/100ft)	VS (ft)
Tie On	17.00	0.000	199.000	17.00	0.00	0.00	0.00	0.00
End of Tangent	1100.00	0.000	199.000	1100.00	0.00	0.00	0.00	0.00
End of Build	1600.00	10.000	199.000	1597.47	-41.15	-14.17	2.00	-41.01
End of Tangent	1950.00	10.000	199.000	1942.15	-98.62	-33.96	0.00	-98.28
End of Drop	2450.00	0.000	0.105	2439.61	-139.77	-48.13	2.00	-139.29
End of Tangent	6707.73	0.000	0.105	6697.34	-139.77	-48.13	0.00	-139.29
End of Build	7589.27	88.154	0.105	7270.00	414.73	-47.11	10.00	415.17
End of Tangent	11314.52	88.154	0.105	7390.00	4138.04	-40.26	0.00	4138.24

Targets

Name	MD (ft)	TVD (ft)	Local N (ft)	Local E (ft)	Grid East (US ft)	Grid North (US ft)	Latitude	Longitude
USA FED 13-36HZ PAD SECTION LINES		-19.00	107.50	-1341.62	3214322.42	1308159.11	40°10'36.293"N	104°43'58.746"W
USA FED 03N-36HZ BHL ON PLAT (460'FNL & 1770'FWL, SEC.36) REV-1		7390.00	4137.32	-115.17	3215513.69	1312199.28	40°11'16.116"N	104°43'42.546"W
USA FED 03N-36HZ BHL ON PLAT (460'FNL & 1845'FWL, SEC.36) REV-2	11314.52	7390.00	4138.04	-40.26	3215588.59	1312200.64	40°11'16.123"N	104°43'41.981"W
USA FED 13-36HZ PAD HARDLINES (460' SETBACKS)		7421.00	107.50	-1341.62	3214322.42	1308159.11	40°10'36.293"N	104°43'58.746"W



BGGM (1945.0 to 2014.0) Dip: 66.83° Field: 52872.9 nT
Magnetic North is 8.73 degrees East of True North (at 7/18/2012)

To correct azimuth from Magnetic to True add 8.73 degrees
For example: if the Magnetic North Azimuth = 90 degs, then the True North Azimuth = 90 + 8.73 = 98.73



Planned Wellpath Report

USA FED 03N-36HZ (PERMIT REV-A.0) PWP

Page 1 of 6



REFERENCE WELLPATH IDENTIFICATION

Operator	KERR-MCGEE OIL & GAS ONSHORE LP	Slot	SLOT#18 USA FED 03N-36HZ (653'FSL & 1903'FWL, SEC.36)
Area	COLORADO	Well	USA FED 03N-36HZ
Field	WELD COUNTY (KERR MCGEE)	Wellbore	USA FED 03N-36HZ PWB
Facility	SEC.36-T3N-R66W		

REPORT SETUP INFORMATION

Projection System	NAD83 / Lambert Colorado SP, Northern Zone (501), US feet	Software System	WellArchitect® 3.0.2
North Reference	True	User	Marqantc
Scale	0.999958	Report Generated	1/16/2013 at 1:10:46 PM
Convergence at slot	0.50° East	Database/Source file	WellArchitectDB/USA_FED_03N-36HZ_PWB.xml

WELLPATH LOCATION

	Local coordinates		Grid coordinates		Geographic coordinates	
	North[ft]	East[ft]	Easting[US ft]	Northing[US ft]	Latitude	Longitude
Slot Location	-2862.24	1334.64	3215664.86	1308063.29	40°10'35.231"N	104°43'41.462"W
Facility Reference Pt			3214305.58	1310913.74	40°11'03.516"N	104°43'58.656"W
Field Reference Pt			3197771.84	1268891.29	40°04'09.600"N	104°47'36.000"W

WELLPATH DATUM

Calculation method	Minimum curvature	XTREME 6 (RKB) to Facility Vertical Datum	5022.00ft
Horizontal Reference Pt	Slot	XTREME 6 (RKB) to Mean Sea Level	5022.00ft
Vertical Reference Pt	XTREME 6 (RKB)	XTREME 6 (RKB) to Mud Line at Slot (SLOT#18 USA FED 03N-36HZ (653'FSL & 1903'FWL, SEC.36))	5022.00ft
MD Reference Pt	XTREME 6 (RKB)	Section Origin	N 0.00, E 0.00 ft
Field Vertical Reference	Mean Sea Level	Section Azimuth	359.44°



Planned Wellpath Report

USA FED 03N-36HZ (PERMIT REV-A.0) PWP

Page 2 of 6



REFERENCE WELLPATH IDENTIFICATION			
Operator	KERR-MCGEE OIL & GAS ONSHORE LP	Slot	SLOT#18 USA FED 03N-36HZ (653'FSL & 1903'FWL, SEC.36)
Area	COLORADO	Well	USA FED 03N-36HZ
Field	WELD COUNTY (KERR MCGEE)	Wellbore	USA FED 03N-36HZ PWB
Facility	SEC.36-T3N-R66W		

WELLPATH DATA (127 stations) † = interpolated/extrapolated station								
MD [ft]	Inclination [°]	Azimuth [°]	TVD [ft]	Vert Sect [ft]	North [ft]	East [ft]	DLS [°/100ft]	Comments
0.00†	0.000	199.000	0.00	0.00	0.00	0.00	0.00	
17.00	0.000	199.000	17.00	0.00	0.00	0.00	0.00	Tie On
117.00†	0.000	199.000	117.00	0.00	0.00	0.00	0.00	
217.00†	0.000	199.000	217.00	0.00	0.00	0.00	0.00	
317.00†	0.000	199.000	317.00	0.00	0.00	0.00	0.00	
417.00†	0.000	199.000	417.00	0.00	0.00	0.00	0.00	
517.00†	0.000	199.000	517.00	0.00	0.00	0.00	0.00	
617.00†	0.000	199.000	617.00	0.00	0.00	0.00	0.00	
717.00†	0.000	199.000	717.00	0.00	0.00	0.00	0.00	
817.00†	0.000	199.000	817.00	0.00	0.00	0.00	0.00	
917.00†	0.000	199.000	917.00	0.00	0.00	0.00	0.00	
1017.00†	0.000	199.000	1017.00	0.00	0.00	0.00	0.00	
1100.00	0.000	199.000	1100.00	0.00	0.00	0.00	0.00	End of Tangent
1117.00†	0.340	199.000	1117.00	-0.05	-0.05	-0.02	2.00	
1217.00†	2.340	199.000	1216.97	-2.25	-2.26	-0.78	2.00	
1317.00†	4.340	199.000	1316.79	-7.74	-7.77	-2.67	2.00	
1417.00†	6.340	199.000	1416.35	-16.51	-16.57	-5.70	2.00	
1517.00†	8.340	199.000	1515.53	-28.55	-28.65	-9.86	2.00	
1600.00	10.000	199.000	1597.47	-41.01	-41.15	-14.17	2.00	End of Build
1617.00†	10.000	199.000	1614.21	-43.79	-43.94	-15.13	0.00	
1717.00†	10.000	199.000	1712.69	-60.16	-60.36	-20.78	0.00	
1817.00†	10.000	199.000	1811.17	-76.52	-76.78	-26.44	0.00	
1917.00†	10.000	199.000	1909.65	-92.88	-93.20	-32.09	0.00	
1950.00	10.000	199.000	1942.15	-98.28	-98.62	-33.96	0.00	End of Tangent
2017.00†	8.660	199.000	2008.26	-108.52	-108.89	-37.49	2.00	
2117.00†	6.660	199.000	2107.36	-121.08	-121.49	-41.83	2.00	
2217.00†	4.660	199.000	2206.87	-130.37	-130.81	-45.04	2.00	
2317.00†	2.660	199.000	2306.66	-136.38	-136.85	-47.12	2.00	
2417.00†	0.660	199.000	2406.61	-139.11	-139.59	-48.06	2.00	
2450.00	0.000	0.105	2439.61	-139.29	-139.77	-48.13	2.00	End of Drop
2517.00†	0.000	0.105	2506.61	-139.29	-139.77	-48.13	0.00	
2617.00†	0.000	0.105	2606.61	-139.29	-139.77	-48.13	0.00	
2717.00†	0.000	0.105	2706.61	-139.29	-139.77	-48.13	0.00	
2817.00†	0.000	0.105	2806.61	-139.29	-139.77	-48.13	0.00	
2917.00†	0.000	0.105	2906.61	-139.29	-139.77	-48.13	0.00	
3017.00†	0.000	0.105	3006.61	-139.29	-139.77	-48.13	0.00	
3117.00†	0.000	0.105	3106.61	-139.29	-139.77	-48.13	0.00	
3217.00†	0.000	0.105	3206.61	-139.29	-139.77	-48.13	0.00	
3317.00†	0.000	0.105	3306.61	-139.29	-139.77	-48.13	0.00	
3417.00†	0.000	0.105	3406.61	-139.29	-139.77	-48.13	0.00	
3517.00†	0.000	0.105	3506.61	-139.29	-139.77	-48.13	0.00	
3617.00†	0.000	0.105	3606.61	-139.29	-139.77	-48.13	0.00	
3717.00†	0.000	0.105	3706.61	-139.29	-139.77	-48.13	0.00	
3817.00†	0.000	0.105	3806.61	-139.29	-139.77	-48.13	0.00	
3917.00†	0.000	0.105	3906.61	-139.29	-139.77	-48.13	0.00	



Planned Wellpath Report

USA FED 03N-36HZ (PERMIT REV-A.0) PWP

Page 3 of 6



REFERENCE WELLPATH IDENTIFICATION			
Operator	KERR-MCGEE OIL & GAS ONSHORE LP	Slot	SLOT#18 USA FED 03N-36HZ (653'FSL & 1903'FWL, SEC.36)
Area	COLORADO	Well	USA FED 03N-36HZ
Field	WELD COUNTY (KERR MCGEE)	Wellbore	USA FED 03N-36HZ PWB
Facility	SEC.36-T3N-R66W		

WELLPATH DATA (127 stations) † = interpolated/extrapolated station								
MD [ft]	Inclination [°]	Azimuth [°]	TVD [ft]	Vert Sect [ft]	North [ft]	East [ft]	DLS [°/100ft]	Comments
4017.00†	0.000	0.105	4006.61	-139.29	-139.77	-48.13	0.00	
4117.00†	0.000	0.105	4106.61	-139.29	-139.77	-48.13	0.00	
4134.39†	0.000	0.105	4124.00	-139.29	-139.77	-48.13	0.00	PARKMAN
4217.00†	0.000	0.105	4206.61	-139.29	-139.77	-48.13	0.00	
4317.00†	0.000	0.105	4306.61	-139.29	-139.77	-48.13	0.00	
4417.00†	0.000	0.105	4406.61	-139.29	-139.77	-48.13	0.00	
4517.00†	0.000	0.105	4506.61	-139.29	-139.77	-48.13	0.00	
4593.39†	0.000	0.105	4583.00	-139.29	-139.77	-48.13	0.00	SUSSEX
4617.00†	0.000	0.105	4606.61	-139.29	-139.77	-48.13	0.00	
4717.00†	0.000	0.105	4706.61	-139.29	-139.77	-48.13	0.00	
4817.00†	0.000	0.105	4806.61	-139.29	-139.77	-48.13	0.00	
4917.00†	0.000	0.105	4906.61	-139.29	-139.77	-48.13	0.00	
5017.00†	0.000	0.105	5006.61	-139.29	-139.77	-48.13	0.00	
5117.00†	0.000	0.105	5106.61	-139.29	-139.77	-48.13	0.00	
5217.00†	0.000	0.105	5206.61	-139.29	-139.77	-48.13	0.00	
5317.00†	0.000	0.105	5306.61	-139.29	-139.77	-48.13	0.00	
5417.00†	0.000	0.105	5406.61	-139.29	-139.77	-48.13	0.00	
5517.00†	0.000	0.105	5506.61	-139.29	-139.77	-48.13	0.00	
5617.00†	0.000	0.105	5606.61	-139.29	-139.77	-48.13	0.00	
5717.00†	0.000	0.105	5706.61	-139.29	-139.77	-48.13	0.00	
5817.00†	0.000	0.105	5806.61	-139.29	-139.77	-48.13	0.00	
5917.00†	0.000	0.105	5906.61	-139.29	-139.77	-48.13	0.00	
6017.00†	0.000	0.105	6006.61	-139.29	-139.77	-48.13	0.00	
6117.00†	0.000	0.105	6106.61	-139.29	-139.77	-48.13	0.00	
6217.00†	0.000	0.105	6206.61	-139.29	-139.77	-48.13	0.00	
6317.00†	0.000	0.105	6306.61	-139.29	-139.77	-48.13	0.00	
6417.00†	0.000	0.105	6406.61	-139.29	-139.77	-48.13	0.00	
6517.00†	0.000	0.105	6506.61	-139.29	-139.77	-48.13	0.00	
6617.00†	0.000	0.105	6606.61	-139.29	-139.77	-48.13	0.00	
6707.73	0.000	0.105	6697.34	-139.29	-139.77	-48.13	0.00	End of Tangent
6717.00†	0.927	0.105	6706.61	-139.22	-139.69	-48.13	10.00	
6817.00†	10.927	0.105	6805.95	-128.91	-129.38	-48.11	10.00	
6917.00†	20.927	0.105	6901.99	-101.50	-101.97	-48.06	10.00	
7017.00†	30.927	0.105	6991.81	-57.84	-58.31	-47.98	10.00	
7110.83†	40.310	0.105	7068.00	-3.26	-3.73	-47.88	10.00	SHARON SPRINGS
7117.00†	40.927	0.105	7072.69	0.76	0.29	-47.87	10.00	
7207.33†	49.960	0.105	7136.00	65.06	64.60	-47.75	10.00	NIORARA A
7217.00†	50.927	0.105	7142.16	72.51	72.05	-47.74	10.00	
7244.55†	53.682	0.105	7159.00	94.31	93.85	-47.70	10.00	NIORARA B
7317.00†	60.927	0.105	7198.11	155.23	154.78	-47.58	10.00	
7417.00†	70.927	0.105	7238.85	246.41	245.96	-47.42	10.00	
7484.03†	77.630	0.105	7257.00	310.89	310.45	-47.30	10.00	NIORARA C
7517.00†	80.927	0.105	7263.13	343.28	342.84	-47.24	10.00	
7589.27	88.154	0.105	7270.00	415.17	414.73	-47.11	10.00	End of Build
7617.00†	88.154	0.105	7270.90	442.88	442.45	-47.06	0.00	



Planned Wellpath Report

USA FED 03N-36HZ (PERMIT REV-A.0) PWP

Page 4 of 6



REFERENCE WELLPATH IDENTIFICATION			
Operator	KERR-MCGEE OIL & GAS ONSHORE LP	Slot	SLOT#18 USA FED 03N-36HZ (653'FSL & 1903'FWL, SEC.36)
Area	COLORADO	Well	USA FED 03N-36HZ
Field	WELD COUNTY (KERR MCGEE)	Wellbore	USA FED 03N-36HZ PWB
Facility	SEC.36-T3N-R66W		

WELLPATH DATA (127 stations) † = interpolated/extrapolated station								
MD [ft]	Inclination [°]	Azimuth [°]	TVD [ft]	Vert Sect [ft]	North [ft]	East [ft]	DLS [°/100ft]	Comments
7717.00†	88.154	0.105	7274.12	542.83	542.40	-46.87	0.00	
7817.00†	88.154	0.105	7277.34	642.77	642.34	-46.69	0.00	
7917.00†	88.154	0.105	7280.56	742.71	742.29	-46.50	0.00	
8017.00†	88.154	0.105	7283.78	842.65	842.24	-46.32	0.00	
8117.00†	88.154	0.105	7287.00	942.59	942.19	-46.14	0.00	
8217.00†	88.154	0.105	7290.22	1042.53	1042.13	-45.95	0.00	
8317.00†	88.154	0.105	7293.45	1142.47	1142.08	-45.77	0.00	
8417.00†	88.154	0.105	7296.67	1242.42	1242.03	-45.59	0.00	
8517.00†	88.154	0.105	7299.89	1342.36	1341.98	-45.40	0.00	
8617.00†	88.154	0.105	7303.11	1442.30	1441.93	-45.22	0.00	
8717.00†	88.154	0.105	7306.33	1542.24	1541.87	-45.04	0.00	
8817.00†	88.154	0.105	7309.55	1642.18	1641.82	-44.85	0.00	
8917.00†	88.154	0.105	7312.77	1742.12	1741.77	-44.67	0.00	
9017.00†	88.154	0.105	7315.99	1842.06	1841.72	-44.48	0.00	
9117.00†	88.154	0.105	7319.21	1942.01	1941.67	-44.30	0.00	
9217.00†	88.154	0.105	7322.44	2041.95	2041.61	-44.12	0.00	
9317.00†	88.154	0.105	7325.66	2141.89	2141.56	-43.93	0.00	
9417.00†	88.154	0.105	7328.88	2241.83	2241.51	-43.75	0.00	
9517.00†	88.154	0.105	7332.10	2341.77	2341.46	-43.57	0.00	
9617.00†	88.154	0.105	7335.32	2441.71	2441.41	-43.38	0.00	
9717.00†	88.154	0.105	7338.54	2541.65	2541.35	-43.20	0.00	
9817.00†	88.154	0.105	7341.76	2641.60	2641.30	-43.01	0.00	
9917.00†	88.154	0.105	7344.98	2741.54	2741.25	-42.83	0.00	
10017.00†	88.154	0.105	7348.20	2841.48	2841.20	-42.65	0.00	
10117.00†	88.154	0.105	7351.43	2941.42	2941.15	-42.46	0.00	
10217.00†	88.154	0.105	7354.65	3041.36	3041.09	-42.28	0.00	
10317.00†	88.154	0.105	7357.87	3141.30	3141.04	-42.10	0.00	
10417.00†	88.154	0.105	7361.09	3241.24	3240.99	-41.91	0.00	
10517.00†	88.154	0.105	7364.31	3341.19	3340.94	-41.73	0.00	
10617.00†	88.154	0.105	7367.53	3441.13	3440.89	-41.55	0.00	
10717.00†	88.154	0.105	7370.75	3541.07	3540.83	-41.36	0.00	
10817.00†	88.154	0.105	7373.97	3641.01	3640.78	-41.18	0.00	
10917.00†	88.154	0.105	7377.20	3740.95	3740.73	-40.99	0.00	
11017.00†	88.154	0.105	7380.42	3840.89	3840.68	-40.81	0.00	
11117.00†	88.154	0.105	7383.64	3940.83	3940.62	-40.63	0.00	
11217.00†	88.154	0.105	7386.86	4040.78	4040.57	-40.44	0.00	
11314.52	88.154	0.105	7390.00 [†]	4138.24	4138.04	-40.26	0.00	End of Tangent



Planned Wellpath Report

USA FED 03N-36HZ (PERMIT REV-A.0) PWP

Page 5 of 6



REFERENCE WELLPATH IDENTIFICATION			
Operator	KERR-MCGEE OIL & GAS ONSHORE LP	Slot	SLOT#18 USA FED 03N-36HZ (653'FSL & 1903'FWL, SEC.36)
Area	COLORADO	Well	USA FED 03N-36HZ
Field	WELD COUNTY (KERR MCGEE)	Wellbore	USA FED 03N-36HZ PWB
Facility	SEC.36-T3N-R66W		

HOLE & CASING SECTIONS - Ref Wellbore: USA FED 03N-36HZ PWB Ref Wellpath: USA FED 03N-36HZ (PERMIT REV-A.0) PWP									
String/Diameter	Start MD [ft]	End MD [ft]	Interval [ft]	Start TVD [ft]	End TVD [ft]	Start N/S [ft]	Start E/W [ft]	End N/S [ft]	End E/W [ft]
13.5in Open Hole	17.00	800.00	783.00	17.00	800.00	0.00	0.00	0.00	0.00
9.625in Casing Surface	17.00	800.00	783.00	17.00	800.00	0.00	0.00	0.00	0.00
8.75in Open Hole	800.00	7589.27	6789.27	800.00	7270.00	0.00	0.00	414.73	-47.11
7in Casing Intermediate	17.00	7589.27	7572.27	17.00	7270.00	0.00	0.00	414.73	-47.11
6.125in Open Hole	7589.27	11314.52	3725.25	7270.00	7390.00	414.73	-47.11	4138.04	-40.26
4.5in Casing Production	17.00	11314.52	11297.52	17.00	7390.00	0.00	0.00	4138.04	-40.26

TARGETS									
Name	MD [ft]	TVD [ft]	North [ft]	East [ft]	Grid East [US ft]	Grid North [US ft]	Latitude	Longitude	Shape
USA FED 13-36HZ PAD SECTION LINES		-19.00	107.50	-1341.62	3214322.42	1308159.11	40°10'36.293"N	104°43'58.746"W	polygon
USA FED 03N-36HZ BHL ON PLAT (460'FNL & 1770'FWL, SEC.36) REV-1		7390.00	4137.32	-115.17	3215513.69	1312199.26	40°11'16.116"N	104°43'42.946"W	point
1) USA FED 03N-36HZ BHL ON PLAT (460'FNL & 1845'FWL, SEC.36) REV-2	11314.52	7390.00	4138.04	-40.26	3215588.59	1312200.64	40°11'16.123"N	104°43'41.981"W	point
USA FED 13-36HZ PAD HARDLINES (460' SETBACKS)		7421.00	107.50	-1341.62	3214322.42	1308159.11	40°10'36.293"N	104°43'58.746"W	polygon

SURVEY PROGRAM - Ref Wellbore: USA FED 03N-36HZ PWB Ref Wellpath: USA FED 03N-36HZ (PERMIT REV-A.0) PWP					
Start MD [ft]	End MD [ft]	Positional Uncertainty Model	Log Name/Comment	Wellbore	
17.00	7589.27	NaviTrak (Standard)		USA FED 03N-36HZ PWB	
7589.27	11314.52	OnTrak (Standard)		USA FED 03N-36HZ PWB	



Planned Wellpath Report
USA FED 03N-36HZ (PERMIT REV-A.0) PWP
 Page 6 of 6



REFERENCE WELLPATH IDENTIFICATION			
Operator	KERR-MCGEE OIL & GAS ONSHORE LP	Slot	SLOT#18 USA FED 03N-36HZ (653'FSL & 1903'FWL, SEC.36)
Area	COLORADO	Well	USA FED 03N-36HZ
Field	WELD COUNTY (KERR MCGEE)	Wellbore	USA FED 03N-36HZ PWB
Facility	SEC.36-T3N-R66W		

WELLPATH COMMENTS					
MD [ft]	Inclination [°]	Azimuth [°]	TVD [ft]	Comment	
4134.39	0.000	0.105	4124.00	PARKMAN	
4593.39	0.000	0.105	4583.00	SUSSEX	
7110.83	40.310	0.105	7068.00	SHARON SPRINGS	
7207.33	49.960	0.105	7136.00	NIOBRARA A	
7244.55	53.682	0.105	7159.00	NIOBRARA B	
7484.03	77.630	0.105	7257.00	NIOBRARA C	