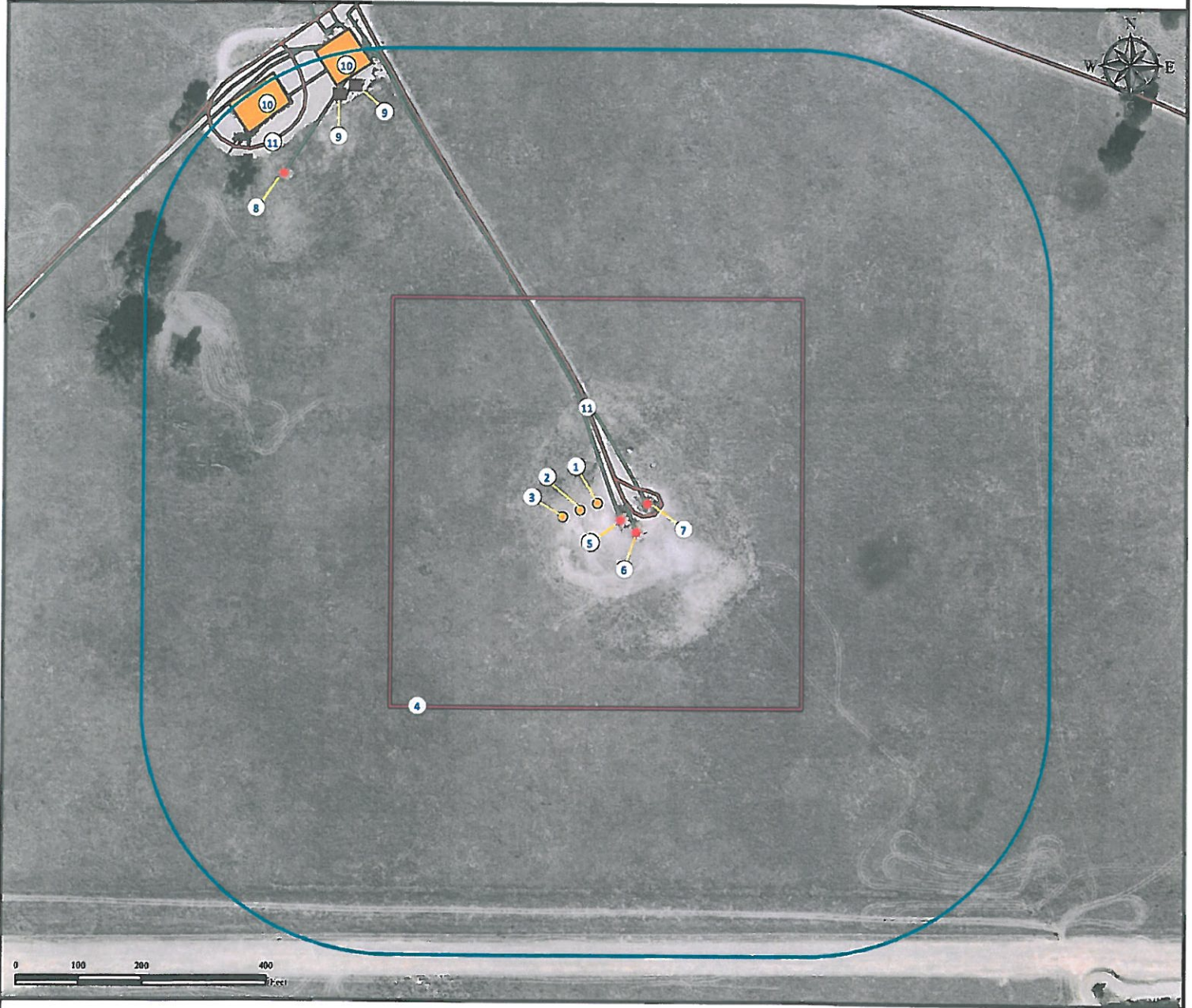


# Location Drawing

## USA FED 28N-36HZ

### Horizontal Multi Well Pad

**SE¼ SW¼ SECTION 36, TOWNSHIP 3 NORTH, RANGE 66 WEST OF THE 6TH PRINCIPAL MERIDIAN**



1. Proposed well USA FED 28N-36HZ.
2. Proposed well USA FED 03N-36HZ.
3. Proposed well USA FED 29C-36HZ
4. Operational Disturbance Area.

5. Existing well USA 35-36 is ±48' SE.
6. Existing well USA 36-36 is ±81' SE.
7. Existing well HSR-FEDERAL 14-36 is ±84' E.
8. Existing well USA 19-36 (DIR) is ±732' NW.

9. Emissions control device is ±777' NW and ±776' NW.
10. Existing facilities are ±800' NW and ±810' NW.
11. Private roads are ±781' NW and ±40' W.

#### Legend

- |  |   |   |
|--|---|---|
| <span style="color: orange;">●</span> Proposed Well  | <span style="background-color: orange; border: 1px solid black; display: inline-block; width: 20px; height: 10px;"></span> Facilities Enclosure | <span style="border-bottom: 1px solid black; display: inline-block; width: 30px;"></span> Private Road        |
| <span style="color: red;">✱</span> Existing Well   | <span style="border: 1px solid black; display: inline-block; width: 20px; height: 10px;"></span> Disturbance Area                               | <span style="border-bottom: 1px solid gray; display: inline-block; width: 30px;"></span> Underground Pipeline |
| <span style="background-color: gray; border: 1px solid black; display: inline-block; width: 15px; height: 10px;"></span> ECD | <span style="border: 2px solid blue; display: inline-block; width: 20px; height: 10px;"></span> 400' Radius                                     |   |

#### Reference Location

**\*\* All Measurements are Made from Reference Well USA FED 28N-36HZ \*\***  
 Lat: 40.176483° Long: -104.728084° (NAD83)  
 Elevation: 5005 Feet

Surface Use: Rangeland



Use our resources to find yours!  
[www.petro-fs.com](http://www.petro-fs.com)  
 (303) 928-7128

Field Date: 01/19/2012  
 Drafting Date: 01/27/2012  
 Drafter: DLR  
 Checked By: BHF

Data Sources:  
 - Aerial courtesy of Anadarko Petroleum Corporation (2010)

Prepared for:



**KERR-MCGEE OIL & GAS ONSHORE LP**