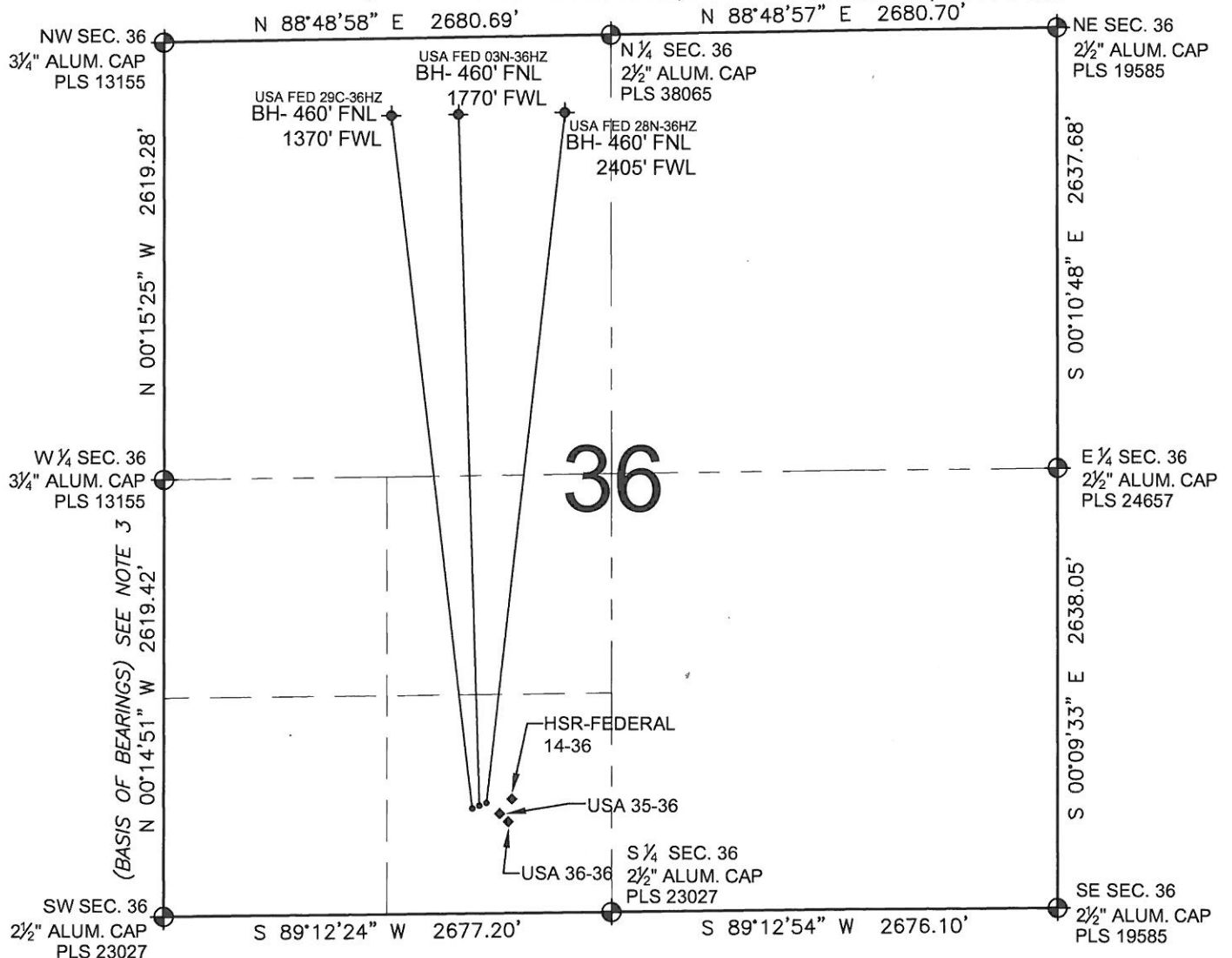


USA FED 28N-36HZ

MULTI-WELL PLAN

SECTION 36, TOWNSHIP 3 NORTH, RANGE 66 WEST, 6TH P.M.



LEGEND

- ⊕ = EXISTING MONUMENT
- ⬢ = BOTTOM HOLE
- BH= BOTTOM HOLE
- = PROPOSED WELL
- ◆ = EXISTING WELL

NOTES:

- THIS FIELD SURVEY CONFORMS TO THE MINIMUM STANDARDS SET BY THE C.O.G.C.C., RULE NO. 215
- HORIZONTAL POSITIONS AND ORTHOMETRIC ELEVATIONS SHOWN AT THE WELL HEAD, ARE BASED ON GPS-RTK POSITIONS DERIVED FROM MINIMUM 2-HOUR STATIC OBSERVATIONS CORRECTED BY THE NATIONAL GEODETIC SURVEY ONLINE POSITIONING USER SERVICE, O.P.U.S. DATUM: HORIZONTAL = NAD83/2007, VERTICAL = NAVD88
- THE BASIS OF BEARINGS ARE STATE PLANE COORDINATE SYSTEM GRID BEARINGS SHOWN HEREON BETWEEN THE DESCRIBED THE MONUMENTS SHOWN HEREON.
- GRID DISTANCES ARE SHOWN, AS MEASURED IN THE FIELD, WITH TIES TO WELLS MEASURED PERPENDICULAR TO SECTION LINES.

NOTES:

- USA FED 29C-36HZ TO BE AT 642' FSL, 1875' FWL. BOTTOM HOLE AT 460' FNL & 1370' FWL.
- USA FED 03N-36HZ TO BE AT 653' FSL, 1903' FWL. BOTTOM HOLE AT 460' FNL & 1770' FWL.
- USA FED 28N-36HZ TO BE AT 664' FSL, 1931' FWL. BOTTOM HOLE AT 460' FNL & 2405' FWL.
- USA 35-36 IS 635' FSL, 1969' FWL.
- USA 36-36 IS 615' FSL, 1996' FWL.
- HSR-FEDERAL 14-36 IS 661' FSL, 2014' FWL.

PREPARED BY:



KERR-MCGEE OIL & GAS ONSHORE LP

FIELD DATE: 01-19-12	PAD NAME: USA FED 3 PAD
DRAWING DATE: 01-20-12	SURFACE LOCATION: WELD COUNTY, COLORADO
BY: SMF	SE 1/4 SW 1/4, SEC. 36, T3N, R66W, 6TH P.M.

