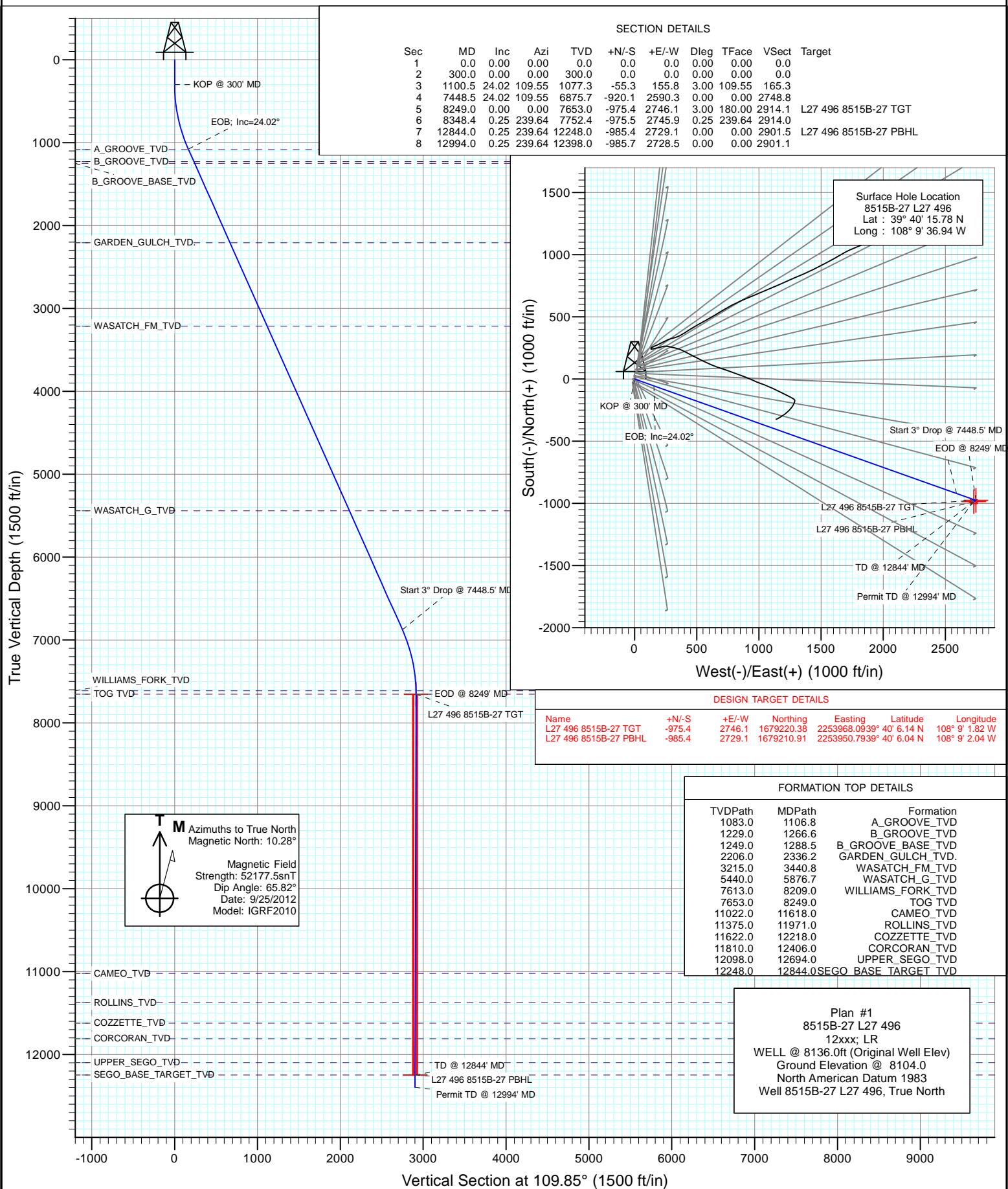
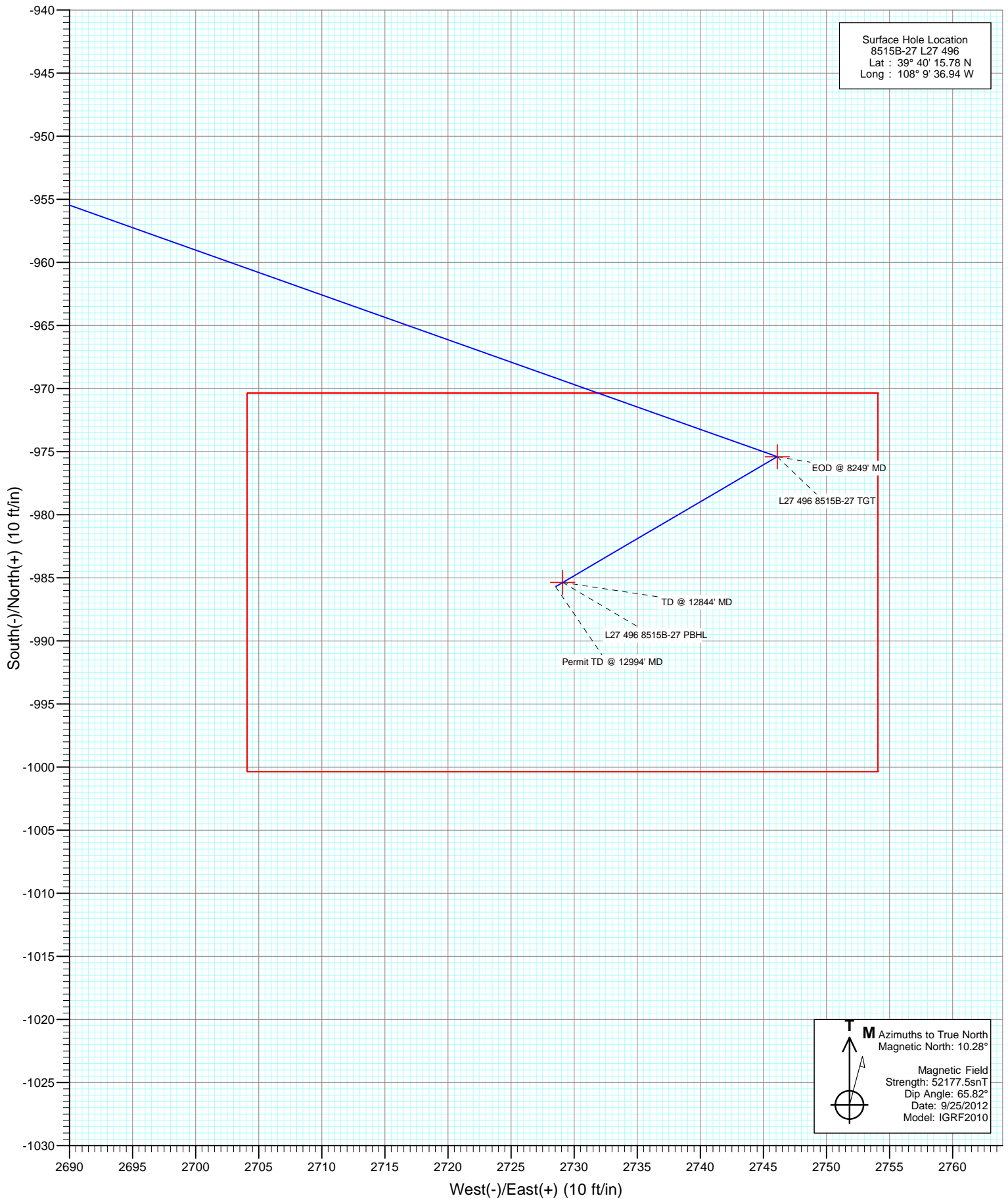




Project: Story Gulch
Site: S27-T4S-R96W (L27 496)
Well: 8515B-27 L27 496
Wellbore: DD
Design: Plan #1





Cathedral Energy Services

Planning Report

Database:	USA EDM 5000 Multi Users DB	Local Co-ordinate Reference:	Well 8515B-27 L27 496
Company:	EnCana Oil & Gas (USA) Inc	TVD Reference:	WELL @ 8136.0ft (Original Well Elev)
Project:	Story Gulch	MD Reference:	WELL @ 8136.0ft (Original Well Elev)
Site:	S27-T4S-R96W (L27 496)	North Reference:	True
Well:	8515B-27 L27 496	Survey Calculation Method:	Minimum Curvature
Wellbore:	DD		
Design:	Plan #1		

Project	Story Gulch		
Map System:	US State Plane 1983	System Datum:	Mean Sea Level
Geo Datum:	North American Datum 1983		
Map Zone:	Colorado Central Zone		

Site		S27-T4S-R96W (L27 496)			
Site Position:		Northing:	1,680,404.44 ft	Latitude:	39° 40' 17.06 N
From:	Lat/Long	Easting:	2,251,282.88 ft	Longitude:	108° 9' 36.59 W
Position Uncertainty:	0.0 ft	Slot Radius:	13.200 in	Grid Convergence:	-1.68 °

Well	8515B-27 L27 496					
Well Position	+N/-S	0.0 ft	Northing:	1,680,275.77 ft	Latitude:	39° 40' 15.78 N
	+E/-W	0.0 ft	Easting:	2,251,251.73 ft	Longitude:	108° 9' 36.94 W
Position Uncertainty		0.0 ft	Wellhead Elevation:	ft	Ground Level:	8,104.0 ft

Wellbore	DD				
Magnetics	Model Name	Sample Date	Declination (°)	Dip Angle (°)	Field Strength (nT)
	IGRF2010	9/25/2012	10.28	65.82	52,177

Design	Plan #1				
Audit Notes:					
Version:	Phase:	PLAN	Tie On Depth:	0.0	
Vertical Section:	Depth From (TVD) (ft)	+N/-S (ft)	+E/-W (ft)	Direction (°)	
	0.0	0.0	0.0	109.85	

Plan Sections										
Measured Depth (ft)	Inclination (°)	Azimuth (°)	Vertical Depth (ft)	+N/-S (ft)	+E/-W (ft)	Dogleg Rate (°/100ft)	Build Rate (°/100ft)	Turn Rate (°/100ft)	TFO (°)	Target
0.0	0.00	0.00	0.0	0.0	0.0	0.00	0.00	0.00	0.00	
300.0	0.00	0.00	300.0	0.0	0.0	0.00	0.00	0.00	0.00	
1,100.5	24.02	109.55	1,077.3	-55.3	155.8	3.00	3.00	0.00	109.55	
7,448.5	24.02	109.55	6,875.7	-920.1	2,590.3	0.00	0.00	0.00	0.00	
8,249.0	0.00	0.00	7,653.0	-975.4	2,746.1	3.00	-3.00	0.00	180.00	L27 496 8515B-27 TC
8,348.4	0.25	239.64	7,752.4	-975.5	2,745.9	0.25	0.25	-121.04	239.64	
12,844.0	0.25	239.64	12,248.0	-985.4	2,729.1	0.00	0.00	0.00	0.00	L27 496 8515B-27 PE
12,994.0	0.25	239.64	12,398.0	-985.7	2,728.5	0.00	0.00	0.00	0.00	

Cathedral Energy Services

Planning Report

Database:	USA EDM 5000 Multi Users DB	Local Co-ordinate Reference:	Well 8515B-27 L27 496
Company:	EnCana Oil & Gas (USA) Inc	TVD Reference:	WELL @ 8136.0ft (Original Well Elev)
Project:	Story Gulch	MD Reference:	WELL @ 8136.0ft (Original Well Elev)
Site:	S27-T4S-R96W (L27 496)	North Reference:	True
Well:	8515B-27 L27 496	Survey Calculation Method:	Minimum Curvature
Wellbore:	DD		
Design:	Plan #1		

Planned Survey

Measured Depth (ft)	Inclination (°)	Azimuth (°)	Vertical Depth (ft)	+N/-S (ft)	+E/-W (ft)	Vertical Section (ft)	Dogleg Rate (°/100ft)	Build Rate (°/100ft)	Comments / Formations
0.0	0.00	0.00	0.0	0.0	0.0	0.0	0.00	0.00	
100.0	0.00	0.00	100.0	0.0	0.0	0.0	0.00	0.00	
200.0	0.00	0.00	200.0	0.0	0.0	0.0	0.00	0.00	
300.0	0.00	0.00	300.0	0.0	0.0	0.0	0.00	0.00	KOP @ 300' MD
400.0	3.00	109.55	400.0	-0.9	2.5	2.6	3.00	3.00	
500.0	6.00	109.55	499.6	-3.5	9.9	10.5	3.00	3.00	
600.0	9.00	109.55	598.8	-7.9	22.2	23.5	3.00	3.00	
700.0	12.00	109.55	697.1	-14.0	39.3	41.7	3.00	3.00	
800.0	15.00	109.55	794.3	-21.8	61.3	65.1	3.00	3.00	
900.0	18.00	109.55	890.2	-31.3	88.1	93.5	3.00	3.00	
1,000.0	21.00	109.55	984.4	-42.5	119.5	126.9	3.00	3.00	
1,100.0	24.00	109.55	1,076.8	-55.3	155.6	165.1	3.00	3.00	
1,100.5	24.02	109.55	1,077.3	-55.3	155.8	165.3	3.00	3.00	EOB; Inc=24.02°
1,106.8	24.02	109.55	1,083.0	-56.2	158.2	167.9	0.00	0.00	A_GROOVE_TVD
1,200.0	24.02	109.55	1,168.2	-68.9	193.9	205.8	0.00	0.00	
1,266.6	24.02	109.55	1,229.0	-78.0	219.5	232.9	0.00	0.00	B_GROOVE_TVD
1,288.5	24.02	109.55	1,249.0	-80.9	227.9	241.8	0.00	0.00	B_GROOVE_BASE_TVD
1,300.0	24.02	109.55	1,259.5	-82.5	232.3	246.5	0.00	0.00	
1,400.0	24.02	109.55	1,350.8	-96.1	270.6	287.2	0.00	0.00	
1,500.0	24.02	109.55	1,442.2	-109.8	309.0	327.9	0.00	0.00	
1,600.0	24.02	109.55	1,533.5	-123.4	347.3	368.6	0.00	0.00	
1,700.0	24.02	109.55	1,624.9	-137.0	385.7	409.3	0.00	0.00	
1,800.0	24.02	109.55	1,716.2	-150.6	424.1	450.0	0.00	0.00	
1,900.0	24.02	109.55	1,807.6	-164.2	462.4	490.7	0.00	0.00	
2,000.0	24.02	109.55	1,898.9	-177.9	500.8	531.4	0.00	0.00	
2,100.0	24.02	109.55	1,990.2	-191.5	539.1	572.1	0.00	0.00	
2,200.0	24.02	109.55	2,081.6	-205.1	577.5	612.8	0.00	0.00	
2,300.0	24.02	109.55	2,172.9	-218.7	615.8	653.5	0.00	0.00	
2,336.2	24.02	109.55	2,206.0	-223.7	629.7	668.2	0.00	0.00	GARDEN_GULCH_TVD.
2,400.0	24.02	109.55	2,264.3	-232.4	654.2	694.2	0.00	0.00	
2,500.0	24.02	109.55	2,355.6	-246.0	692.5	734.9	0.00	0.00	
2,600.0	24.02	109.55	2,447.0	-259.6	730.9	775.6	0.00	0.00	
2,700.0	24.02	109.55	2,538.3	-273.2	769.2	816.3	0.00	0.00	
2,800.0	24.02	109.55	2,629.6	-286.8	807.6	857.0	0.00	0.00	
2,900.0	24.02	109.55	2,721.0	-300.5	845.9	897.7	0.00	0.00	
3,000.0	24.02	109.55	2,812.3	-314.1	884.3	938.4	0.00	0.00	
3,100.0	24.02	109.55	2,903.7	-327.7	922.6	979.1	0.00	0.00	
3,200.0	24.02	109.55	2,995.0	-341.3	961.0	1,019.8	0.00	0.00	
3,300.0	24.02	109.55	3,086.4	-355.0	999.3	1,060.5	0.00	0.00	
3,400.0	24.02	109.55	3,177.7	-368.6	1,037.7	1,101.2	0.00	0.00	
3,440.8	24.02	109.55	3,215.0	-374.1	1,053.3	1,117.8	0.00	0.00	WASATCH_FM_TVD
3,500.0	24.02	109.55	3,269.1	-382.2	1,076.0	1,141.9	0.00	0.00	
3,600.0	24.02	109.55	3,360.4	-395.8	1,114.4	1,182.6	0.00	0.00	
3,700.0	24.02	109.55	3,451.7	-409.4	1,152.7	1,223.3	0.00	0.00	
3,800.0	24.02	109.55	3,543.1	-423.1	1,191.1	1,264.0	0.00	0.00	
3,900.0	24.02	109.55	3,634.4	-436.7	1,229.4	1,304.7	0.00	0.00	
4,000.0	24.02	109.55	3,725.8	-450.3	1,267.8	1,345.4	0.00	0.00	
4,100.0	24.02	109.55	3,817.1	-463.9	1,306.1	1,386.1	0.00	0.00	
4,200.0	24.02	109.55	3,908.5	-477.6	1,344.5	1,426.8	0.00	0.00	
4,300.0	24.02	109.55	3,999.8	-491.2	1,382.8	1,467.5	0.00	0.00	
4,400.0	24.02	109.55	4,091.1	-504.8	1,421.2	1,508.2	0.00	0.00	
4,500.0	24.02	109.55	4,182.5	-518.4	1,459.5	1,548.8	0.00	0.00	

Cathedral Energy Services

Planning Report

Database:	USA EDM 5000 Multi Users DB	Local Co-ordinate Reference:	Well 8515B-27 L27 496
Company:	EnCana Oil & Gas (USA) Inc	TVD Reference:	WELL @ 8136.0ft (Original Well Elev)
Project:	Story Gulch	MD Reference:	WELL @ 8136.0ft (Original Well Elev)
Site:	S27-T4S-R96W (L27 496)	North Reference:	True
Well:	8515B-27 L27 496	Survey Calculation Method:	Minimum Curvature
Wellbore:	DD		
Design:	Plan #1		

Planned Survey

Measured Depth (ft)	Inclination (°)	Azimuth (°)	Vertical Depth (ft)	+N/-S (ft)	+E/-W (ft)	Vertical Section (ft)	Dogleg Rate (°/100ft)	Build Rate (°/100ft)	Comments / Formations
4,600.0	24.02	109.55	4,273.8	-532.0	1,497.9	1,589.5	0.00	0.00	
4,700.0	24.02	109.55	4,365.2	-545.7	1,536.2	1,630.2	0.00	0.00	
4,800.0	24.02	109.55	4,456.5	-559.3	1,574.6	1,670.9	0.00	0.00	
4,900.0	24.02	109.55	4,547.9	-572.9	1,612.9	1,711.6	0.00	0.00	
5,000.0	24.02	109.55	4,639.2	-586.5	1,651.3	1,752.3	0.00	0.00	
5,100.0	24.02	109.55	4,730.5	-600.2	1,689.6	1,793.0	0.00	0.00	
5,200.0	24.02	109.55	4,821.9	-613.8	1,728.0	1,833.7	0.00	0.00	
5,300.0	24.02	109.55	4,913.2	-627.4	1,766.3	1,874.4	0.00	0.00	
5,400.0	24.02	109.55	5,004.6	-641.0	1,804.7	1,915.1	0.00	0.00	
5,500.0	24.02	109.55	5,095.9	-654.6	1,843.0	1,955.8	0.00	0.00	
5,600.0	24.02	109.55	5,187.3	-668.3	1,881.4	1,996.5	0.00	0.00	
5,700.0	24.02	109.55	5,278.6	-681.9	1,919.7	2,037.2	0.00	0.00	
5,800.0	24.02	109.55	5,370.0	-695.5	1,958.1	2,077.9	0.00	0.00	
5,876.7	24.02	109.55	5,440.0	-706.0	1,987.5	2,109.1	0.00	0.00	WASATCH_G_TVD
5,900.0	24.02	109.55	5,461.3	-709.1	1,996.5	2,118.6	0.00	0.00	
6,000.0	24.02	109.55	5,552.6	-722.8	2,034.8	2,159.3	0.00	0.00	
6,100.0	24.02	109.55	5,644.0	-736.4	2,073.2	2,200.0	0.00	0.00	
6,200.0	24.02	109.55	5,735.3	-750.0	2,111.5	2,240.7	0.00	0.00	
6,300.0	24.02	109.55	5,826.7	-763.6	2,149.9	2,281.4	0.00	0.00	
6,400.0	24.02	109.55	5,918.0	-777.2	2,188.2	2,322.1	0.00	0.00	
6,500.0	24.02	109.55	6,009.4	-790.9	2,226.6	2,362.8	0.00	0.00	
6,600.0	24.02	109.55	6,100.7	-804.5	2,264.9	2,403.5	0.00	0.00	
6,700.0	24.02	109.55	6,192.0	-818.1	2,303.3	2,444.2	0.00	0.00	
6,800.0	24.02	109.55	6,283.4	-831.7	2,341.6	2,484.9	0.00	0.00	
6,900.0	24.02	109.55	6,374.7	-845.4	2,380.0	2,525.6	0.00	0.00	
7,000.0	24.02	109.55	6,466.1	-859.0	2,418.3	2,566.3	0.00	0.00	
7,100.0	24.02	109.55	6,557.4	-872.6	2,456.7	2,607.0	0.00	0.00	
7,200.0	24.02	109.55	6,648.8	-886.2	2,495.0	2,647.7	0.00	0.00	
7,300.0	24.02	109.55	6,740.1	-899.8	2,533.4	2,688.4	0.00	0.00	
7,400.0	24.02	109.55	6,831.4	-913.5	2,571.7	2,729.1	0.00	0.00	
7,448.5	24.02	109.55	6,875.7	-920.1	2,590.3	2,748.8	0.00	0.00	Start 3° Drop @ 7448.5' MD
7,500.0	22.47	109.55	6,923.1	-926.9	2,609.5	2,769.2	3.00	-3.00	
7,600.0	19.47	109.55	7,016.4	-938.8	2,643.2	2,804.9	3.00	-3.00	
7,700.0	16.47	109.55	7,111.5	-949.2	2,672.3	2,835.8	3.00	-3.00	
7,800.0	13.47	109.55	7,208.1	-957.8	2,696.6	2,861.6	3.00	-3.00	
7,900.0	10.47	109.55	7,306.0	-964.8	2,716.1	2,882.3	3.00	-3.00	
8,000.0	7.47	109.55	7,404.7	-970.0	2,730.8	2,897.9	3.00	-3.00	
8,100.0	4.47	109.55	7,504.2	-973.5	2,740.6	2,908.3	3.00	-3.00	
8,200.0	1.47	109.55	7,604.0	-975.2	2,745.5	2,913.5	3.00	-3.00	
8,209.0	1.20	109.55	7,613.0	-975.3	2,745.7	2,913.7	3.00	-3.00	WILLIAMS_FORK_TVD
8,249.0	0.00	0.00	7,653.0	-975.4	2,746.1	2,914.1	3.00	-3.00	EOD @ 8249' MD - TOG TVD
8,300.0	0.13	239.64	7,704.0	-975.4	2,746.1	2,914.1	0.25	0.25	
8,348.4	0.25	239.64	7,752.4	-975.5	2,745.9	2,914.0	0.25	0.25	
8,400.0	0.25	239.64	7,804.0	-975.6	2,745.7	2,913.9	0.00	0.00	
8,500.0	0.25	239.64	7,904.0	-975.8	2,745.3	2,913.6	0.00	0.00	
8,600.0	0.25	239.64	8,004.0	-976.1	2,745.0	2,913.3	0.00	0.00	
8,700.0	0.25	239.64	8,104.0	-976.3	2,744.6	2,913.0	0.00	0.00	
8,800.0	0.25	239.64	8,204.0	-976.5	2,744.2	2,912.8	0.00	0.00	
8,900.0	0.25	239.64	8,304.0	-976.7	2,743.8	2,912.5	0.00	0.00	
9,000.0	0.25	239.64	8,404.0	-976.9	2,743.5	2,912.2	0.00	0.00	
9,100.0	0.25	239.64	8,504.0	-977.2	2,743.1	2,911.9	0.00	0.00	
9,200.0	0.25	239.64	8,604.0	-977.4	2,742.7	2,911.6	0.00	0.00	

Cathedral Energy Services

Planning Report

Database:	USA EDM 5000 Multi Users DB	Local Co-ordinate Reference:	Well 8515B-27 L27 496
Company:	EnCana Oil & Gas (USA) Inc	TVD Reference:	WELL @ 8136.0ft (Original Well Elev)
Project:	Story Gulch	MD Reference:	WELL @ 8136.0ft (Original Well Elev)
Site:	S27-T4S-R96W (L27 496)	North Reference:	True
Well:	8515B-27 L27 496	Survey Calculation Method:	Minimum Curvature
Wellbore:	DD		
Design:	Plan #1		

Planned Survey

Measured Depth (ft)	Inclination (°)	Azimuth (°)	Vertical Depth (ft)	+N/-S (ft)	+E/-W (ft)	Vertical Section (ft)	Dogleg Rate (°/100ft)	Build Rate (°/100ft)	Comments / Formations
9,300.0	0.25	239.64	8,704.0	-977.6	2,742.4	2,911.4	0.00	0.00	
9,400.0	0.25	239.64	8,804.0	-977.8	2,742.0	2,911.1	0.00	0.00	
9,500.0	0.25	239.64	8,904.0	-978.0	2,741.6	2,910.8	0.00	0.00	
9,600.0	0.25	239.64	9,004.0	-978.3	2,741.2	2,910.5	0.00	0.00	
9,700.0	0.25	239.64	9,104.0	-978.5	2,740.9	2,910.3	0.00	0.00	
9,800.0	0.25	239.64	9,204.0	-978.7	2,740.5	2,910.0	0.00	0.00	
9,900.0	0.25	239.64	9,304.0	-978.9	2,740.1	2,909.7	0.00	0.00	
10,000.0	0.25	239.64	9,404.0	-979.1	2,739.7	2,909.4	0.00	0.00	
10,100.0	0.25	239.64	9,504.0	-979.4	2,739.4	2,909.1	0.00	0.00	
10,200.0	0.25	239.64	9,604.0	-979.6	2,739.0	2,908.9	0.00	0.00	
10,300.0	0.25	239.64	9,704.0	-979.8	2,738.6	2,908.6	0.00	0.00	
10,400.0	0.25	239.64	9,804.0	-980.0	2,738.2	2,908.3	0.00	0.00	
10,500.0	0.25	239.64	9,904.0	-980.2	2,737.9	2,908.0	0.00	0.00	
10,600.0	0.25	239.64	10,004.0	-980.4	2,737.5	2,907.8	0.00	0.00	
10,700.0	0.25	239.64	10,104.0	-980.7	2,737.1	2,907.5	0.00	0.00	
10,800.0	0.25	239.64	10,204.0	-980.9	2,736.7	2,907.2	0.00	0.00	
10,900.0	0.25	239.64	10,304.0	-981.1	2,736.4	2,906.9	0.00	0.00	
11,000.0	0.25	239.64	10,404.0	-981.3	2,736.0	2,906.6	0.00	0.00	
11,100.0	0.25	239.64	10,504.0	-981.5	2,735.6	2,906.4	0.00	0.00	
11,200.0	0.25	239.64	10,604.0	-981.8	2,735.2	2,906.1	0.00	0.00	
11,300.0	0.25	239.64	10,704.0	-982.0	2,734.9	2,905.8	0.00	0.00	
11,400.0	0.25	239.64	10,804.0	-982.2	2,734.5	2,905.5	0.00	0.00	
11,500.0	0.25	239.64	10,904.0	-982.4	2,734.1	2,905.3	0.00	0.00	
11,600.0	0.25	239.64	11,004.0	-982.6	2,733.7	2,905.0	0.00	0.00	
11,618.0	0.25	239.64	11,022.0	-982.7	2,733.7	2,904.9	0.00	0.00	CAMEO_TVD
11,700.0	0.25	239.64	11,104.0	-982.9	2,733.4	2,904.7	0.00	0.00	
11,800.0	0.25	239.64	11,204.0	-983.1	2,733.0	2,904.4	0.00	0.00	
11,900.0	0.25	239.64	11,304.0	-983.3	2,732.6	2,904.1	0.00	0.00	
11,971.0	0.25	239.64	11,375.0	-983.5	2,732.4	2,903.9	0.00	0.00	ROLLINS_TVD
12,000.0	0.25	239.64	11,404.0	-983.5	2,732.2	2,903.9	0.00	0.00	
12,100.0	0.25	239.64	11,504.0	-983.7	2,731.9	2,903.6	0.00	0.00	
12,200.0	0.25	239.64	11,604.0	-984.0	2,731.5	2,903.3	0.00	0.00	
12,218.0	0.25	239.64	11,622.0	-984.0	2,731.4	2,903.3	0.00	0.00	COZZETTE_TVD
12,300.0	0.25	239.64	11,704.0	-984.2	2,731.1	2,903.0	0.00	0.00	
12,400.0	0.25	239.64	11,804.0	-984.4	2,730.7	2,902.8	0.00	0.00	
12,406.0	0.25	239.64	11,810.0	-984.4	2,730.7	2,902.7	0.00	0.00	CORCORAN_TVD
12,500.0	0.25	239.64	11,904.0	-984.6	2,730.4	2,902.5	0.00	0.00	
12,600.0	0.25	239.64	12,004.0	-984.8	2,730.0	2,902.2	0.00	0.00	
12,694.0	0.25	239.64	12,098.0	-985.0	2,729.6	2,901.9	0.00	0.00	UPPER_SEGO_TVD
12,700.0	0.25	239.64	12,104.0	-985.1	2,729.6	2,901.9	0.00	0.00	
12,800.0	0.25	239.64	12,204.0	-985.3	2,729.2	2,901.6	0.00	0.00	
12,844.0	0.25	239.64	12,248.0	-985.4	2,729.1	2,901.5	0.00	0.00	TD @ 12844' MD - SEGO_BASE_TARGET_TV
12,900.0	0.25	239.64	12,304.0	-985.5	2,728.9	2,901.4	0.00	0.00	
12,994.0	0.25	239.64	12,398.0	-985.7	2,728.5	2,901.1	0.00	0.00	Permit TD @ 12994' MD

Cathedral Energy Services

Planning Report

Database:	USA EDM 5000 Multi Users DB	Local Co-ordinate Reference:	Well 8515B-27 L27 496
Company:	EnCana Oil & Gas (USA) Inc	TVD Reference:	WELL @ 8136.0ft (Original Well Elev)
Project:	Story Gulch	MD Reference:	WELL @ 8136.0ft (Original Well Elev)
Site:	S27-T4S-R96W (L27 496)	North Reference:	True
Well:	8515B-27 L27 496	Survey Calculation Method:	Minimum Curvature
Wellbore:	DD		
Design:	Plan #1		

Targets									
Target Name									
- hit/miss target	Dip Angle	Dip Dir.	TVD	+N/-S	+E/-W	Northing	Easting	Latitude	Longitude
- Shape	(°)	(°)	(ft)	(ft)	(ft)	(ft)	(ft)		
L27 496 8515B-27 PBHI	0.00	0.00	12,248.0	-985.4	2,729.1	1,679,210.91	2,253,950.79	39° 40' 6.04 N	108° 9' 2.04 W
- plan hits target center									
- Rectangle (sides W30.0 H50.0 D0.0)									
L27 496 8515B-27 TGT	0.00	0.00	7,653.0	-975.4	2,746.1	1,679,220.38	2,253,968.09	39° 40' 6.14 N	108° 9' 1.82 W
- plan hits target center									
- Point									

Formations						
Measured Depth	Vertical Depth	Name	Lithology	Dip	Dip Direction	
(ft)	(ft)			(°)	(°)	
1,106.8	1,083.0	A_GROOVE_TVD				
1,266.6	1,229.0	B_GROOVE_TVD				
1,288.5	1,249.0	B_GROOVE_BASE_TVD				
2,336.2	2,206.0	GARDEN_GULCH_TVD.				
3,440.8	3,215.0	WASATCH_FM_TVD				
5,876.7	5,440.0	WASATCH_G_TVD				
8,209.0	7,613.0	WILLIAMS_FORK_TVD				
8,249.0	7,653.0	TOG TVD				
11,618.0	11,022.0	CAMEO_TVD				
11,971.0	11,375.0	ROLLINS_TVD				
12,218.0	11,622.0	COZZETTE_TVD				
12,406.0	11,810.0	CORCORAN_TVD				
12,694.0	12,098.0	UPPER_SEGO_TVD				
12,844.0	12,248.0	SEGO_BASE_TARGET_TVD				

Plan Annotations				
Measured Depth	Vertical Depth	Local Coordinates		Comment
(ft)	(ft)	+N/-S (ft)	+E/-W (ft)	
300.0	300.0	0.0	0.0	KOP @ 300' MD
1,100.5	1,077.3	-55.3	155.8	EOB; Inc=24.02°
7,448.5	6,875.7	-920.1	2,590.3	Start 3° Drop @ 7448.5' MD
8,249.0	7,653.0	-975.4	2,746.1	EOD @ 8249' MD
12,844.0	12,248.0	-975.5	2,745.9	TD @ 12844' MD
12,994.0	12,398.0	-985.4	2,729.1	Permit TD @ 12994' MD