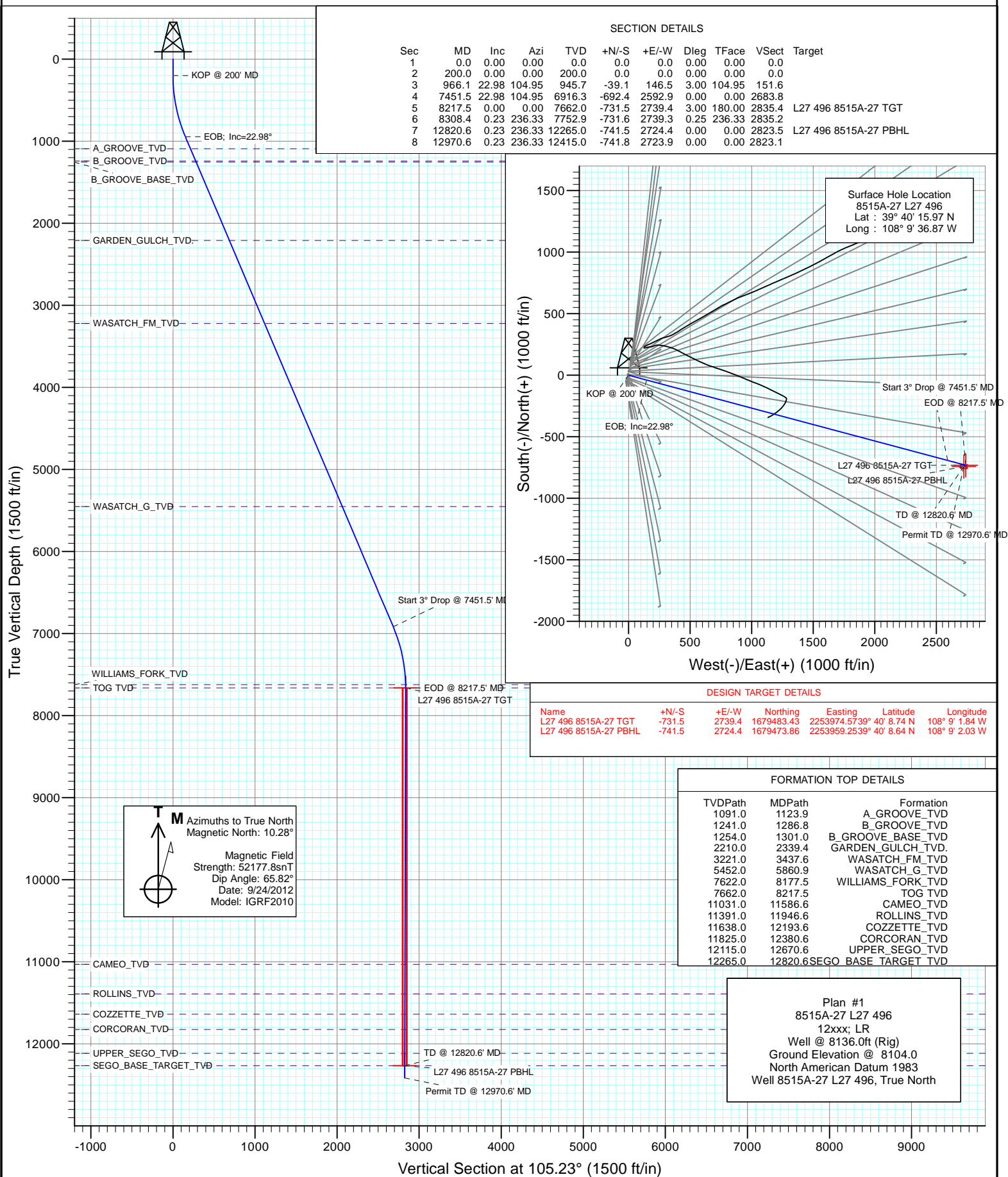


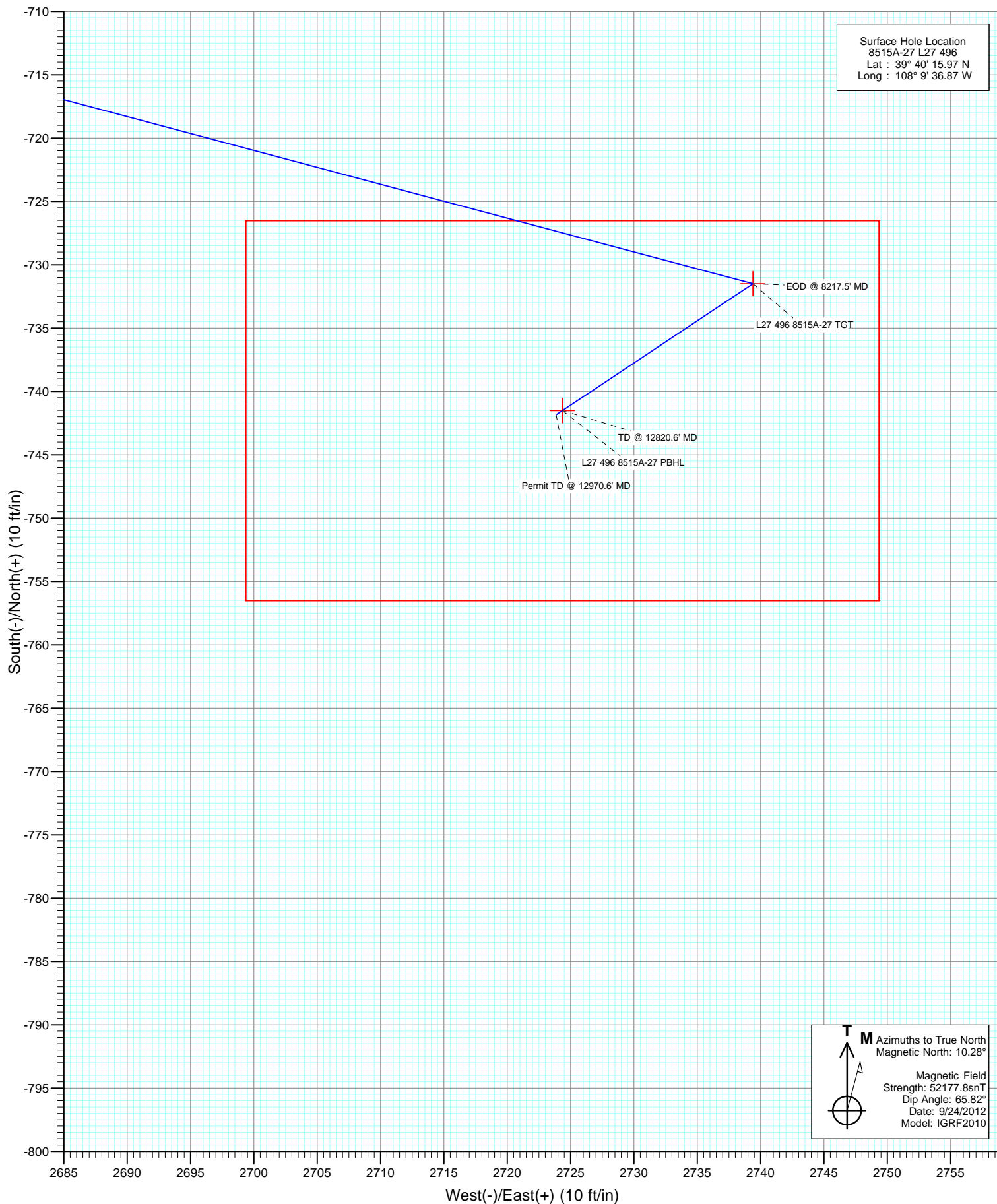


Project: Story Gulch
Site: S27-T4S-R96W (L27 496)
Well: 8515A-27 L27 496
Wellbore: DD
Design: Plan #1





Project: Story Gulch
Site: S27-T4S-R96W (L27 496)
Well: 8515A-27 L27 496
Wellbore: DD
Design: Plan #1



Cathedral Energy Services

Planning Report

Database:	USA EDM 5000 Multi Users DB	Local Co-ordinate Reference:	Well 8515A-27 L27 496
Company:	EnCana Oil & Gas (USA) Inc	TVD Reference:	Well @ 8136.0ft (Rig)
Project:	Story Gulch	MD Reference:	Well @ 8136.0ft (Rig)
Site:	S27-T4S-R96W (L27 496)	North Reference:	True
Well:	8515A-27 L27 496	Survey Calculation Method:	Minimum Curvature
Wellbore:	DD		
Design:	Plan #1		

Project	Story Gulch		
Map System:	US State Plane 1983	System Datum:	Mean Sea Level
Geo Datum:	North American Datum 1983		
Map Zone:	Colorado Central Zone		

Site		S27-T4S-R96W (L27 496)			
Site Position:		Northing:	1,680,404.44 ft	Latitude:	39° 40' 17.06 N
From:	Lat/Long	Easting:	2,251,282.88 ft	Longitude:	108° 9' 36.59 W
Position Uncertainty:	0.0 ft	Slot Radius:	13.200 in	Grid Convergence:	-1.68 °

Well	8515A-27 L27 496					
Well Position	+N/-S	0.0 ft	Northing:	1,680,294.82 ft	Latitude:	39° 40' 15.97 N
	+E/-W	0.0 ft	Easting:	2,251,257.76 ft	Longitude:	108° 9' 36.87 W
Position Uncertainty		0.0 ft	Wellhead Elevation:	ft	Ground Level:	8,104.0 ft

Wellbore	DD				
Magnetics	Model Name	Sample Date	Declination (°)	Dip Angle (°)	Field Strength (nT)
	IGRF2010	9/24/2012	10.28	65.82	52,178

Design	Plan #1			
Audit Notes:				
Version:	Phase:	PLAN	Tie On Depth:	0.0
Vertical Section:	Depth From (TVD) (ft)	+N/-S (ft)	+E/-W (ft)	Direction (°)
	0.0	0.0	0.0	105.23

Plan Sections										
Measured Depth (ft)	Inclination (°)	Azimuth (°)	Vertical Depth (ft)	+N/-S (ft)	+E/-W (ft)	Dogleg Rate (°/100ft)	Build Rate (°/100ft)	Turn Rate (°/100ft)	TFO (°)	Target
0.0	0.00	0.00	0.0	0.0	0.0	0.00	0.00	0.00	0.00	
200.0	0.00	0.00	200.0	0.0	0.0	0.00	0.00	0.00	0.00	
966.1	22.98	104.95	945.7	-39.1	146.5	3.00	3.00	0.00	104.95	
7,451.5	22.98	104.95	6,916.3	-692.4	2,592.9	0.00	0.00	0.00	0.00	
8,217.5	0.00	0.00	7,662.0	-731.5	2,739.4	3.00	-3.00	0.00	180.00	L27 496 8515A-27 TC
8,308.4	0.23	236.33	7,752.9	-731.6	2,739.3	0.25	0.25	-136.12	236.33	
12,820.6	0.23	236.33	12,265.0	-741.5	2,724.4	0.00	0.00	0.00	0.00	L27 496 8515A-27 PE
12,970.6	0.23	236.33	12,415.0	-741.8	2,723.9	0.00	0.00	0.00	0.00	

Cathedral Energy Services

Planning Report

Database:	USA EDM 5000 Multi Users DB	Local Co-ordinate Reference:	Well 8515A-27 L27 496
Company:	EnCana Oil & Gas (USA) Inc	TVD Reference:	Well @ 8136.0ft (Rig)
Project:	Story Gulch	MD Reference:	Well @ 8136.0ft (Rig)
Site:	S27-T4S-R96W (L27 496)	North Reference:	True
Well:	8515A-27 L27 496	Survey Calculation Method:	Minimum Curvature
Wellbore:	DD		
Design:	Plan #1		

Planned Survey

Measured Depth (ft)	Inclination (°)	Azimuth (°)	Vertical Depth (ft)	+N/-S (ft)	+E/-W (ft)	Vertical Section (ft)	Dogleg Rate (°/100ft)	Build Rate (°/100ft)	Comments / Formations
0.0	0.00	0.00	0.0	0.0	0.0	0.0	0.00	0.00	
100.0	0.00	0.00	100.0	0.0	0.0	0.0	0.00	0.00	
200.0	0.00	0.00	200.0	0.0	0.0	0.0	0.00	0.00	KOP @ 200' MD
300.0	3.00	104.95	300.0	-0.7	2.5	2.6	3.00	3.00	
400.0	6.00	104.95	399.6	-2.7	10.1	10.5	3.00	3.00	
500.0	9.00	104.95	498.8	-6.1	22.7	23.5	3.00	3.00	
600.0	12.00	104.95	597.1	-10.8	40.3	41.7	3.00	3.00	
700.0	15.00	104.95	694.3	-16.8	62.9	65.1	3.00	3.00	
800.0	18.00	104.95	790.2	-24.1	90.3	93.5	3.00	3.00	
900.0	21.00	104.95	884.4	-32.7	122.6	126.9	3.00	3.00	
966.1	22.98	104.95	945.7	-39.1	146.5	151.6	3.00	3.00	EOB; Inc=22.98°
1,000.0	22.98	104.95	976.9	-42.5	159.3	164.8	0.00	0.00	
1,100.0	22.98	104.95	1,069.0	-52.6	197.0	203.9	0.00	0.00	
1,123.9	22.98	104.95	1,091.0	-55.0	206.0	213.2	0.00	0.00	A_GROOVE_TVD
1,200.0	22.98	104.95	1,161.1	-62.7	234.7	242.9	0.00	0.00	
1,286.8	22.98	104.95	1,241.0	-71.4	267.5	276.8	0.00	0.00	B_GROOVE_TVD
1,300.0	22.98	104.95	1,253.1	-72.7	272.4	282.0	0.00	0.00	
1,301.0	22.98	104.95	1,254.0	-72.8	272.8	282.3	0.00	0.00	B_GROOVE_BASE_TVD
1,400.0	22.98	104.95	1,345.2	-82.8	310.2	321.0	0.00	0.00	
1,500.0	22.98	104.95	1,437.2	-92.9	347.9	360.1	0.00	0.00	
1,600.0	22.98	104.95	1,529.3	-103.0	385.6	399.1	0.00	0.00	
1,700.0	22.98	104.95	1,621.4	-113.0	423.3	438.1	0.00	0.00	
1,800.0	22.98	104.95	1,713.4	-123.1	461.0	477.2	0.00	0.00	
1,900.0	22.98	104.95	1,805.5	-133.2	498.8	516.2	0.00	0.00	
2,000.0	22.98	104.95	1,897.6	-143.3	536.5	555.3	0.00	0.00	
2,100.0	22.98	104.95	1,989.6	-153.3	574.2	594.3	0.00	0.00	
2,200.0	22.98	104.95	2,081.7	-163.4	611.9	633.4	0.00	0.00	
2,300.0	22.98	104.95	2,173.7	-173.5	649.7	672.4	0.00	0.00	
2,339.4	22.98	104.95	2,210.0	-177.4	664.5	687.8	0.00	0.00	GARDEN_GULCH_TVD.
2,400.0	22.98	104.95	2,265.8	-183.5	687.4	711.5	0.00	0.00	
2,500.0	22.98	104.95	2,357.9	-193.6	725.1	750.5	0.00	0.00	
2,600.0	22.98	104.95	2,449.9	-203.7	762.8	789.5	0.00	0.00	
2,700.0	22.98	104.95	2,542.0	-213.8	800.5	828.6	0.00	0.00	
2,800.0	22.98	104.95	2,634.1	-223.8	838.3	867.6	0.00	0.00	
2,900.0	22.98	104.95	2,726.1	-233.9	876.0	906.7	0.00	0.00	
3,000.0	22.98	104.95	2,818.2	-244.0	913.7	945.7	0.00	0.00	
3,100.0	22.98	104.95	2,910.2	-254.1	951.4	984.8	0.00	0.00	
3,200.0	22.98	104.95	3,002.3	-264.1	989.2	1,023.8	0.00	0.00	
3,300.0	22.98	104.95	3,094.4	-274.2	1,026.9	1,062.9	0.00	0.00	
3,400.0	22.98	104.95	3,186.4	-284.3	1,064.6	1,101.9	0.00	0.00	
3,437.6	22.98	104.95	3,221.0	-288.1	1,078.8	1,116.6	0.00	0.00	WASATCH_FM_TVD
3,500.0	22.98	104.95	3,278.5	-294.4	1,102.3	1,140.9	0.00	0.00	
3,600.0	22.98	104.95	3,370.6	-304.4	1,140.1	1,180.0	0.00	0.00	
3,700.0	22.98	104.95	3,462.6	-314.5	1,177.8	1,219.0	0.00	0.00	
3,800.0	22.98	104.95	3,554.7	-324.6	1,215.5	1,258.1	0.00	0.00	
3,900.0	22.98	104.95	3,646.7	-334.6	1,253.2	1,297.1	0.00	0.00	
4,000.0	22.98	104.95	3,738.8	-344.7	1,290.9	1,336.2	0.00	0.00	
4,100.0	22.98	104.95	3,830.9	-354.8	1,328.7	1,375.2	0.00	0.00	
4,200.0	22.98	104.95	3,922.9	-364.9	1,366.4	1,414.3	0.00	0.00	
4,300.0	22.98	104.95	4,015.0	-374.9	1,404.1	1,453.3	0.00	0.00	
4,400.0	22.98	104.95	4,107.1	-385.0	1,441.8	1,492.3	0.00	0.00	
4,500.0	22.98	104.95	4,199.1	-395.1	1,479.6	1,531.4	0.00	0.00	

Cathedral Energy Services

Planning Report

Database:	USA EDM 5000 Multi Users DB	Local Co-ordinate Reference:	Well 8515A-27 L27 496
Company:	EnCana Oil & Gas (USA) Inc	TVD Reference:	Well @ 8136.0ft (Rig)
Project:	Story Gulch	MD Reference:	Well @ 8136.0ft (Rig)
Site:	S27-T4S-R96W (L27 496)	North Reference:	True
Well:	8515A-27 L27 496	Survey Calculation Method:	Minimum Curvature
Wellbore:	DD		
Design:	Plan #1		

Planned Survey

Measured Depth (ft)	Inclination (°)	Azimuth (°)	Vertical Depth (ft)	+N/-S (ft)	+E/-W (ft)	Vertical Section (ft)	Dogleg Rate (°/100ft)	Build Rate (°/100ft)	Comments / Formations
4,600.0	22.98	104.95	4,291.2	-405.2	1,517.3	1,570.4	0.00	0.00	
4,700.0	22.98	104.95	4,383.2	-415.2	1,555.0	1,609.5	0.00	0.00	
4,800.0	22.98	104.95	4,475.3	-425.3	1,592.7	1,648.5	0.00	0.00	
4,900.0	22.98	104.95	4,567.4	-435.4	1,630.5	1,687.6	0.00	0.00	
5,000.0	22.98	104.95	4,659.4	-445.4	1,668.2	1,726.6	0.00	0.00	
5,100.0	22.98	104.95	4,751.5	-455.5	1,705.9	1,765.7	0.00	0.00	
5,200.0	22.98	104.95	4,843.6	-465.6	1,743.6	1,804.7	0.00	0.00	
5,300.0	22.98	104.95	4,935.6	-475.7	1,781.3	1,843.7	0.00	0.00	
5,400.0	22.98	104.95	5,027.7	-485.7	1,819.1	1,882.8	0.00	0.00	
5,500.0	22.98	104.95	5,119.7	-495.8	1,856.8	1,921.8	0.00	0.00	
5,600.0	22.98	104.95	5,211.8	-505.9	1,894.5	1,960.9	0.00	0.00	
5,700.0	22.98	104.95	5,303.9	-516.0	1,932.2	1,999.9	0.00	0.00	
5,800.0	22.98	104.95	5,395.9	-526.0	1,970.0	2,039.0	0.00	0.00	
5,860.9	22.98	104.95	5,452.0	-532.2	1,992.9	2,062.7	0.00	0.00	WASATCH_G_TVD
5,900.0	22.98	104.95	5,488.0	-536.1	2,007.7	2,078.0	0.00	0.00	
6,000.0	22.98	104.95	5,580.1	-546.2	2,045.4	2,117.0	0.00	0.00	
6,100.0	22.98	104.95	5,672.1	-556.3	2,083.1	2,156.1	0.00	0.00	
6,200.0	22.98	104.95	5,764.2	-566.3	2,120.9	2,195.1	0.00	0.00	
6,300.0	22.98	104.95	5,856.2	-576.4	2,158.6	2,234.2	0.00	0.00	
6,400.0	22.98	104.95	5,948.3	-586.5	2,196.3	2,273.2	0.00	0.00	
6,500.0	22.98	104.95	6,040.4	-596.5	2,234.0	2,312.3	0.00	0.00	
6,600.0	22.98	104.95	6,132.4	-606.6	2,271.7	2,351.3	0.00	0.00	
6,700.0	22.98	104.95	6,224.5	-616.7	2,309.5	2,390.4	0.00	0.00	
6,800.0	22.98	104.95	6,316.6	-626.8	2,347.2	2,429.4	0.00	0.00	
6,900.0	22.98	104.95	6,408.6	-636.8	2,384.9	2,468.4	0.00	0.00	
7,000.0	22.98	104.95	6,500.7	-646.9	2,422.6	2,507.5	0.00	0.00	
7,100.0	22.98	104.95	6,592.7	-657.0	2,460.4	2,546.5	0.00	0.00	
7,200.0	22.98	104.95	6,684.8	-667.1	2,498.1	2,585.6	0.00	0.00	
7,300.0	22.98	104.95	6,776.9	-677.1	2,535.8	2,624.6	0.00	0.00	
7,400.0	22.98	104.95	6,868.9	-687.2	2,573.5	2,663.7	0.00	0.00	
7,451.5	22.98	104.95	6,916.3	-692.4	2,592.9	2,683.8	0.00	0.00	Start 3° Drop @ 7451.5' MD
7,500.0	21.53	104.95	6,961.2	-697.1	2,610.7	2,702.1	3.00	-3.00	
7,600.0	18.53	104.95	7,055.2	-706.0	2,643.8	2,736.4	3.00	-3.00	
7,700.0	15.53	104.95	7,150.8	-713.5	2,672.1	2,765.7	3.00	-3.00	
7,800.0	12.53	104.95	7,247.8	-719.8	2,695.5	2,789.9	3.00	-3.00	
7,900.0	9.53	104.95	7,345.9	-724.7	2,714.0	2,809.0	3.00	-3.00	
8,000.0	6.53	104.95	7,444.9	-728.3	2,727.4	2,823.0	3.00	-3.00	
8,100.0	3.53	104.95	7,544.5	-730.6	2,735.9	2,831.7	3.00	-3.00	
8,177.5	1.20	104.95	7,622.0	-731.4	2,739.0	2,834.9	3.00	-3.00	WILLIAMS_FORK_TVD
8,200.0	0.53	104.95	7,644.5	-731.5	2,739.3	2,835.3	3.00	-3.00	
8,217.5	0.00	0.00	7,662.0	-731.5	2,739.4	2,835.4	3.00	-3.00	EOD @ 8217.5' MD - TOG TVD
8,300.0	0.21	236.33	7,744.5	-731.6	2,739.3	2,835.3	0.25	0.25	
8,308.4	0.23	236.33	7,752.9	-731.6	2,739.3	2,835.2	0.25	0.25	
8,400.0	0.23	236.33	7,844.5	-731.8	2,738.9	2,835.0	0.00	0.00	
8,500.0	0.23	236.33	7,944.5	-732.0	2,738.6	2,834.7	0.00	0.00	
8,600.0	0.23	236.33	8,044.5	-732.2	2,738.3	2,834.5	0.00	0.00	
8,700.0	0.23	236.33	8,144.5	-732.5	2,738.0	2,834.2	0.00	0.00	
8,800.0	0.23	236.33	8,244.5	-732.7	2,737.6	2,834.0	0.00	0.00	
8,900.0	0.23	236.33	8,344.5	-732.9	2,737.3	2,833.7	0.00	0.00	
9,000.0	0.23	236.33	8,444.5	-733.1	2,737.0	2,833.4	0.00	0.00	
9,100.0	0.23	236.33	8,544.5	-733.3	2,736.6	2,833.2	0.00	0.00	
9,200.0	0.23	236.33	8,644.5	-733.6	2,736.3	2,832.9	0.00	0.00	

Cathedral Energy Services

Planning Report

Database:	USA EDM 5000 Multi Users DB	Local Co-ordinate Reference:	Well 8515A-27 L27 496
Company:	EnCana Oil & Gas (USA) Inc	TVD Reference:	Well @ 8136.0ft (Rig)
Project:	Story Gulch	MD Reference:	Well @ 8136.0ft (Rig)
Site:	S27-T4S-R96W (L27 496)	North Reference:	True
Well:	8515A-27 L27 496	Survey Calculation Method:	Minimum Curvature
Wellbore:	DD		
Design:	Plan #1		

Planned Survey									
Measured Depth (ft)	Inclination (°)	Azimuth (°)	Vertical Depth (ft)	+N/-S (ft)	+E/-W (ft)	Vertical Section (ft)	Dogleg Rate (°/100ft)	Build Rate (°/100ft)	Comments / Formations
9,300.0	0.23	236.33	8,744.5	-733.8	2,736.0	2,832.6	0.00	0.00	
9,400.0	0.23	236.33	8,844.5	-734.0	2,735.6	2,832.4	0.00	0.00	
9,500.0	0.23	236.33	8,944.5	-734.2	2,735.3	2,832.1	0.00	0.00	
9,600.0	0.23	236.33	9,044.5	-734.4	2,735.0	2,831.9	0.00	0.00	
9,700.0	0.23	236.33	9,144.5	-734.7	2,734.7	2,831.6	0.00	0.00	
9,800.0	0.23	236.33	9,244.5	-734.9	2,734.3	2,831.3	0.00	0.00	
9,900.0	0.23	236.33	9,344.5	-735.1	2,734.0	2,831.1	0.00	0.00	
10,000.0	0.23	236.33	9,444.5	-735.3	2,733.7	2,830.8	0.00	0.00	
10,100.0	0.23	236.33	9,544.5	-735.5	2,733.3	2,830.6	0.00	0.00	
10,200.0	0.23	236.33	9,644.5	-735.8	2,733.0	2,830.3	0.00	0.00	
10,300.0	0.23	236.33	9,744.5	-736.0	2,732.7	2,830.0	0.00	0.00	
10,400.0	0.23	236.33	9,844.5	-736.2	2,732.3	2,829.8	0.00	0.00	
10,500.0	0.23	236.33	9,944.5	-736.4	2,732.0	2,829.5	0.00	0.00	
10,600.0	0.23	236.33	10,044.5	-736.6	2,731.7	2,829.3	0.00	0.00	
10,700.0	0.23	236.33	10,144.5	-736.9	2,731.4	2,829.0	0.00	0.00	
10,800.0	0.23	236.33	10,244.4	-737.1	2,731.0	2,828.7	0.00	0.00	
10,900.0	0.23	236.33	10,344.4	-737.3	2,730.7	2,828.5	0.00	0.00	
11,000.0	0.23	236.33	10,444.4	-737.5	2,730.4	2,828.2	0.00	0.00	
11,100.0	0.23	236.33	10,544.4	-737.7	2,730.0	2,828.0	0.00	0.00	
11,200.0	0.23	236.33	10,644.4	-738.0	2,729.7	2,827.7	0.00	0.00	
11,300.0	0.23	236.33	10,744.4	-738.2	2,729.4	2,827.4	0.00	0.00	
11,400.0	0.23	236.33	10,844.4	-738.4	2,729.1	2,827.2	0.00	0.00	
11,500.0	0.23	236.33	10,944.4	-738.6	2,728.7	2,826.9	0.00	0.00	
11,586.6	0.23	236.33	11,031.0	-738.8	2,728.4	2,826.7	0.00	0.00	CAMEO_TVD
11,600.0	0.23	236.33	11,044.4	-738.8	2,728.4	2,826.7	0.00	0.00	
11,700.0	0.23	236.33	11,144.4	-739.0	2,728.1	2,826.4	0.00	0.00	
11,800.0	0.23	236.33	11,244.4	-739.3	2,727.7	2,826.1	0.00	0.00	
11,900.0	0.23	236.33	11,344.4	-739.5	2,727.4	2,825.9	0.00	0.00	
11,946.6	0.23	236.33	11,391.0	-739.6	2,727.2	2,825.8	0.00	0.00	ROLLINS_TVD
12,000.0	0.23	236.33	11,444.4	-739.7	2,727.1	2,825.6	0.00	0.00	
12,100.0	0.23	236.33	11,544.4	-739.9	2,726.7	2,825.4	0.00	0.00	
12,193.6	0.23	236.33	11,638.0	-740.1	2,726.4	2,825.1	0.00	0.00	COZZETTE_TVD
12,200.0	0.23	236.33	11,644.4	-740.1	2,726.4	2,825.1	0.00	0.00	
12,300.0	0.23	236.33	11,744.4	-740.4	2,726.1	2,824.8	0.00	0.00	
12,380.6	0.23	236.33	11,825.0	-740.5	2,725.8	2,824.6	0.00	0.00	CORCORAN_TVD
12,400.0	0.23	236.33	11,844.4	-740.6	2,725.8	2,824.6	0.00	0.00	
12,500.0	0.23	236.33	11,944.4	-740.8	2,725.4	2,824.3	0.00	0.00	
12,600.0	0.23	236.33	12,044.4	-741.0	2,725.1	2,824.0	0.00	0.00	
12,670.6	0.23	236.33	12,115.0	-741.2	2,724.9	2,823.9	0.00	0.00	UPPER_SEGO_TVD
12,700.0	0.23	236.33	12,144.4	-741.2	2,724.8	2,823.8	0.00	0.00	
12,800.0	0.23	236.33	12,244.4	-741.5	2,724.4	2,823.5	0.00	0.00	
12,820.6	0.23	236.33	12,265.0	-741.5	2,724.4	2,823.5	0.00	0.00	TD @ 12820.6' MD - SEGO_BASE_TARGET_1
12,900.0	0.23	236.33	12,344.4	-741.7	2,724.1	2,823.3	0.00	0.00	
12,970.6	0.23	236.33	12,415.0	-741.8	2,723.9	2,823.1	0.00	0.00	Permit TD @ 12970.6' MD

Cathedral Energy Services

Planning Report

Database:	USA EDM 5000 Multi Users DB	Local Co-ordinate Reference:	Well 8515A-27 L27 496
Company:	EnCana Oil & Gas (USA) Inc	TVD Reference:	Well @ 8136.0ft (Rig)
Project:	Story Gulch	MD Reference:	Well @ 8136.0ft (Rig)
Site:	S27-T4S-R96W (L27 496)	North Reference:	True
Well:	8515A-27 L27 496	Survey Calculation Method:	Minimum Curvature
Wellbore:	DD		
Design:	Plan #1		

Targets									
Target Name									
- hit/miss target	Dip Angle	Dip Dir.	TVD	+N/-S	+E/-W	Northing	Easting	Latitude	Longitude
- Shape	(°)	(°)	(ft)	(ft)	(ft)	(ft)	(ft)		
L27 496 8515A-27 PBHI	0.00	0.00	12,265.0	-741.5	2,724.4	1,679,473.86	2,253,959.25	39° 40' 8.64 N	108° 9' 2.03 W
- plan hits target center									
- Rectangle (sides W30.0 H50.0 D0.0)									
L27 496 8515A-27 TGT	0.00	0.00	7,662.0	-731.5	2,739.4	1,679,483.43	2,253,974.57	39° 40' 8.74 N	108° 9' 1.84 W
- plan hits target center									
- Point									

Formations						
Measured Depth	Vertical Depth	Name	Lithology	Dip	Dip Direction	
(ft)	(ft)			(°)	(°)	
1,123.9	1,091.0	A_GROOVE_TVD				
1,286.8	1,241.0	B_GROOVE_TVD				
1,301.0	1,254.0	B_GROOVE_BASE_TVD				
2,339.4	2,210.0	GARDEN_GULCH_TVD.				
3,437.6	3,221.0	WASATCH_FM_TVD				
5,860.9	5,452.0	WASATCH_G_TVD				
8,177.5	7,622.0	WILLIAMS_FORK_TVD				
8,217.5	7,662.0	TOG TVD				
11,586.6	11,031.0	CAMEO_TVD				
11,946.6	11,391.0	ROLLINS_TVD				
12,193.6	11,638.0	COZZETTE_TVD				
12,380.6	11,825.0	CORCORAN_TVD				
12,670.6	12,115.0	UPPER_SEGO_TVD				
12,820.6	12,265.0	SEGO_BASE_TARGET_TVD				

Plan Annotations				
Measured Depth	Vertical Depth	Local Coordinates		Comment
(ft)	(ft)	+N/-S (ft)	+E/-W (ft)	
200.0	200.0	0.0	0.0	KOP @ 200' MD
966.1	945.7	-39.1	146.5	EOB; Inc=22.98°
7,451.5	6,916.3	-692.4	2,592.9	Start 3° Drop @ 7451.5' MD
8,217.5	7,662.0	-731.5	2,739.4	EOD @ 8217.5' MD
12,820.6	12,265.0	-731.6	2,739.3	TD @ 12820.6' MD
12,970.6	12,415.0	-741.5	2,724.4	Permit TD @ 12970.6' MD