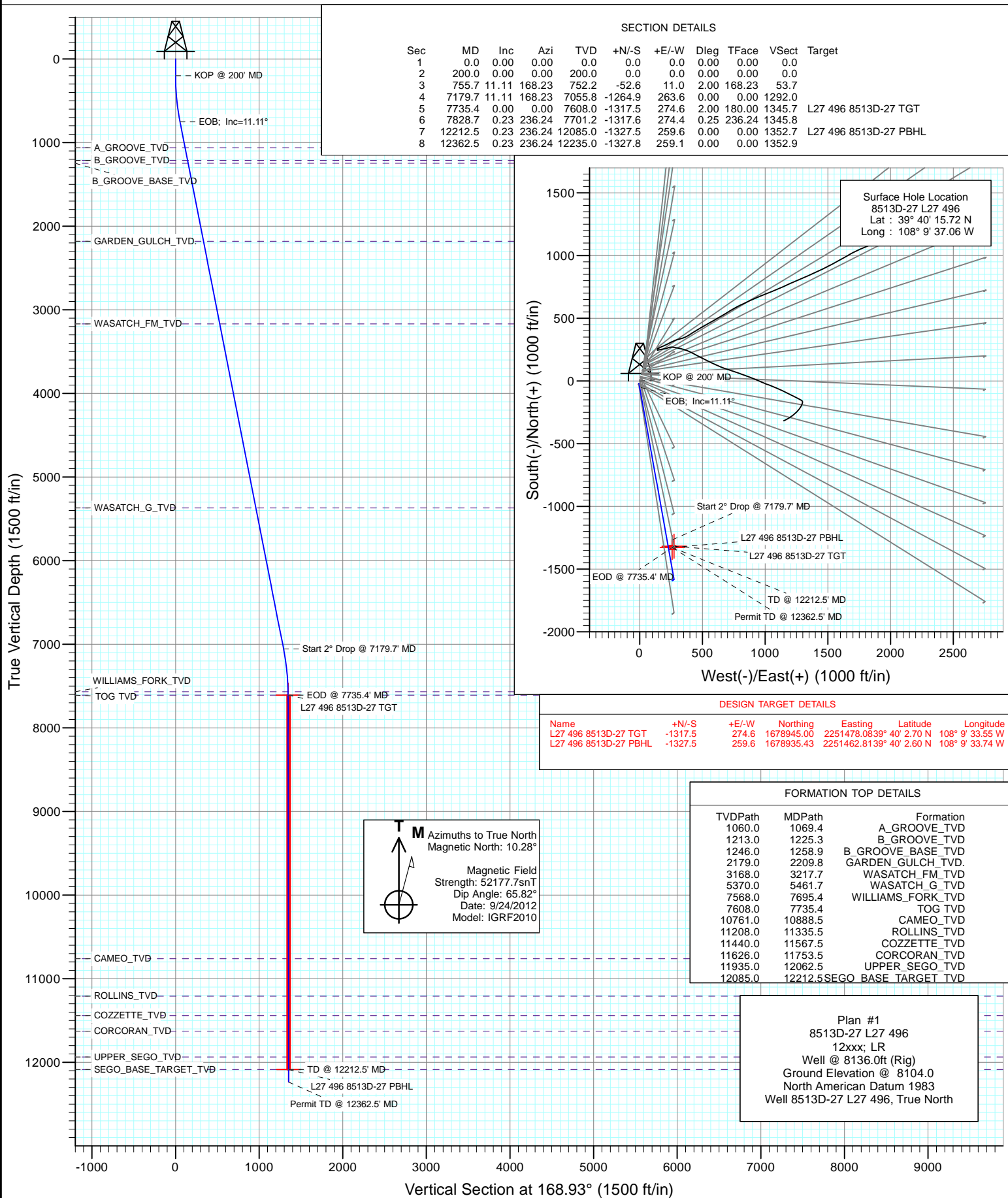
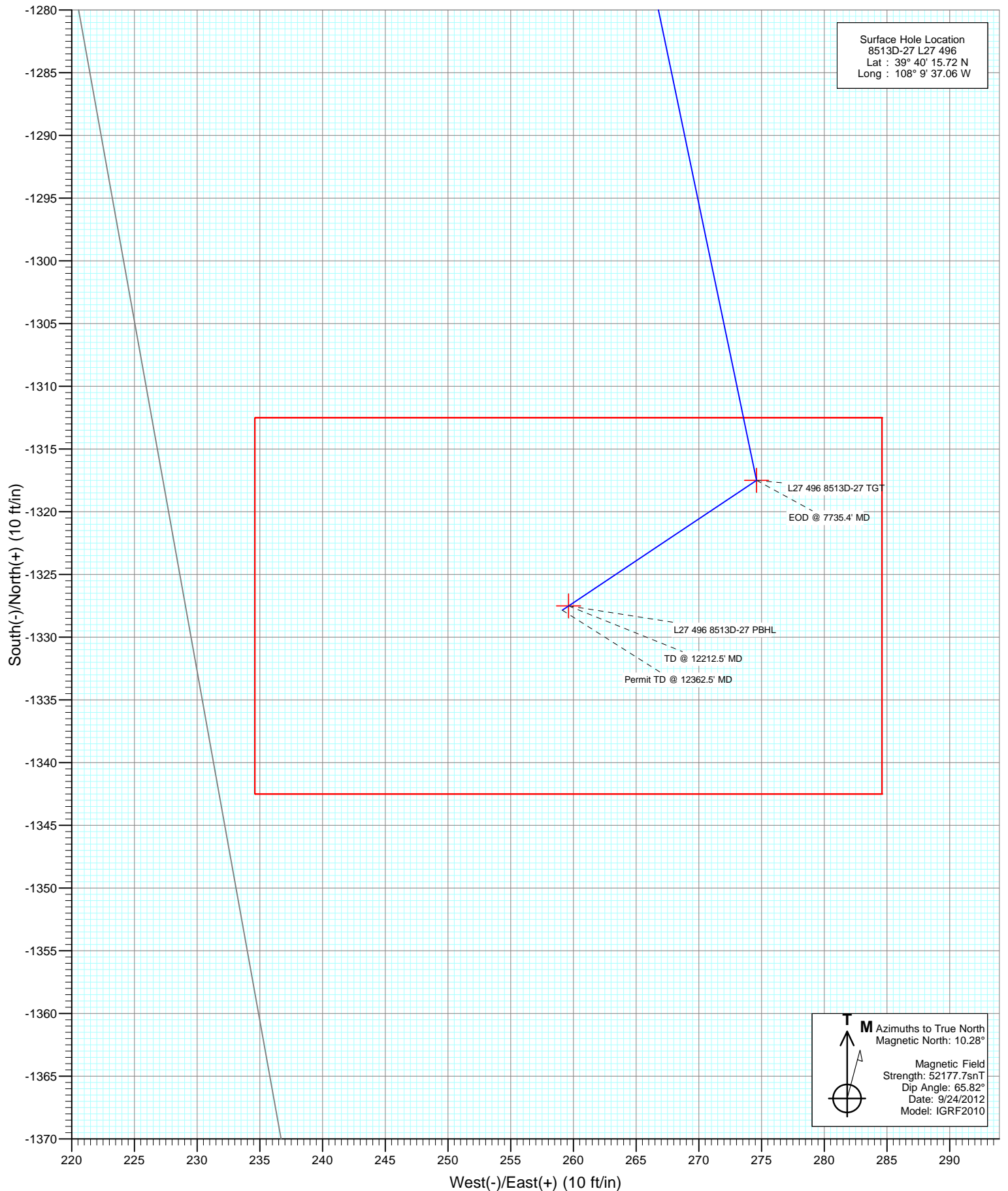




Project: Story Gulch  
Site: S27-T4S-R96W (L27 496)  
Well: 8513D-27 L27 496  
Wellbore: DD  
Design: Plan #1





# Cathedral Energy Services

## Planning Report

<b>Database:</b>	USA EDM 5000 Multi Users DB	<b>Local Co-ordinate Reference:</b>	Well 8513D-27 L27 496
<b>Company:</b>	EnCana Oil & Gas (USA) Inc	<b>TVD Reference:</b>	Well @ 8136.0ft (Rig)
<b>Project:</b>	Story Gulch	<b>MD Reference:</b>	Well @ 8136.0ft (Rig)
<b>Site:</b>	S27-T4S-R96W (L27 496)	<b>North Reference:</b>	True
<b>Well:</b>	8513D-27 L27 496	<b>Survey Calculation Method:</b>	Minimum Curvature
<b>Wellbore:</b>	DD		
<b>Design:</b>	Plan #1		

<b>Project</b>	Story Gulch		
<b>Map System:</b>	US State Plane 1983	<b>System Datum:</b>	Mean Sea Level
<b>Geo Datum:</b>	North American Datum 1983		
<b>Map Zone:</b>	Colorado Central Zone		

Site		S27-T4S-R96W (L27 496)			
Site Position:		Northing:	1,680,404.44 ft	Latitude:	39° 40' 17.06 N
From:	Lat/Long	Easting:	2,251,282.88 ft	Longitude:	108° 9' 36.59 W
Position Uncertainty:	0.0 ft	Slot Radius:	13.200 in	Grid Convergence:	-1.68 °

Well	8513D-27 L27 496					
Well Position	+N/-S	0.0 ft	Northing:	1,680,269.97 ft	Latitude:	39° 40' 15.72 N
	+E/-W	0.0 ft	Easting:	2,251,242.17 ft	Longitude:	108° 9' 37.06 W
Position Uncertainty		0.0 ft	Wellhead Elevation:	ft	Ground Level:	8,104.0 ft

<b>Wellbore</b>	DD				
<b>Magnetics</b>	<b>Model Name</b>	<b>Sample Date</b>	<b>Declination (°)</b>	<b>Dip Angle (°)</b>	<b>Field Strength (nT)</b>
	IGRF2010	9/24/2012	10.28	65.82	52,178

<b>Design</b>	Plan #1			
<b>Audit Notes:</b>				
<b>Version:</b>	<b>Phase:</b>	PLAN	<b>Tie On Depth:</b>	0.0
<b>Vertical Section:</b>	<b>Depth From (TVD) (ft)</b>	<b>+N/-S (ft)</b>	<b>+E/-W (ft)</b>	<b>Direction (°)</b>
	0.0	0.0	0.0	168.93

<b>Plan Sections</b>										
Measured Depth (ft)	Inclination (°)	Azimuth (°)	Vertical Depth (ft)	+N/-S (ft)	+E/-W (ft)	Dogleg Rate (°/100ft)	Build Rate (°/100ft)	Turn Rate (°/100ft)	TFO (°)	Target
0.0	0.00	0.00	0.0	0.0	0.0	0.00	0.00	0.00	0.00	
200.0	0.00	0.00	200.0	0.0	0.0	0.00	0.00	0.00	0.00	
755.7	11.11	168.23	752.2	-52.6	11.0	2.00	2.00	0.00	168.23	
7,179.7	11.11	168.23	7,055.8	-1,264.9	263.6	0.00	0.00	0.00	0.00	
7,735.4	0.00	0.00	7,608.0	-1,317.5	274.6	2.00	-2.00	0.00	180.00	L27 496 8513D-27 TC
7,828.7	0.23	236.24	7,701.2	-1,317.6	274.4	0.25	0.25	-132.76	236.24	
12,212.5	0.23	236.24	12,085.0	-1,327.5	259.6	0.00	0.00	0.00	0.00	L27 496 8513D-27 PE
12,362.5	0.23	236.24	12,235.0	-1,327.8	259.1	0.00	0.00	0.00	0.00	

# Cathedral Energy Services

## Planning Report

<b>Database:</b>	USA EDM 5000 Multi Users DB	<b>Local Co-ordinate Reference:</b>	Well 8513D-27 L27 496
<b>Company:</b>	EnCana Oil & Gas (USA) Inc	<b>TVD Reference:</b>	Well @ 8136.0ft (Rig)
<b>Project:</b>	Story Gulch	<b>MD Reference:</b>	Well @ 8136.0ft (Rig)
<b>Site:</b>	S27-T4S-R96W (L27 496)	<b>North Reference:</b>	True
<b>Well:</b>	8513D-27 L27 496	<b>Survey Calculation Method:</b>	Minimum Curvature
<b>Wellbore:</b>	DD		
<b>Design:</b>	Plan #1		

### Planned Survey

Measured Depth (ft)	Inclination (°)	Azimuth (°)	Vertical Depth (ft)	+N/-S (ft)	+E/-W (ft)	Vertical Section (ft)	Dogleg Rate (°/100ft)	Build Rate (°/100ft)	Comments / Formations
0.0	0.00	0.00	0.0	0.0	0.0	0.0	0.00	0.00	
100.0	0.00	0.00	100.0	0.0	0.0	0.0	0.00	0.00	
200.0	0.00	0.00	200.0	0.0	0.0	0.0	0.00	0.00	KOP @ 200' MD
300.0	2.00	168.23	300.0	-1.7	0.4	1.7	2.00	2.00	
400.0	4.00	168.23	399.8	-6.8	1.4	7.0	2.00	2.00	
500.0	6.00	168.23	499.5	-15.4	3.2	15.7	2.00	2.00	
600.0	8.00	168.23	598.7	-27.3	5.7	27.9	2.00	2.00	
700.0	10.00	168.23	697.5	-42.6	8.9	43.5	2.00	2.00	
755.7	11.11	168.23	752.2	-52.6	11.0	53.7	2.00	2.00	EOB; Inc=11.11°
800.0	11.11	168.23	795.7	-61.0	12.7	62.3	0.00	0.00	
900.0	11.11	168.23	893.8	-79.8	16.6	81.5	0.00	0.00	
1,000.0	11.11	168.23	991.9	-98.7	20.6	100.8	0.00	0.00	
1,069.4	11.11	168.23	1,060.0	-111.8	23.3	114.2	0.00	0.00	A_GROOVE_TVD
1,100.0	11.11	168.23	1,090.1	-117.6	24.5	120.1	0.00	0.00	
1,200.0	11.11	168.23	1,188.2	-136.4	28.4	139.4	0.00	0.00	
1,225.3	11.11	168.23	1,213.0	-141.2	29.4	144.2	0.00	0.00	B_GROOVE_TVD
1,258.9	11.11	168.23	1,246.0	-147.6	30.8	150.7	0.00	0.00	B_GROOVE_BASE_TVD
1,300.0	11.11	168.23	1,286.3	-155.3	32.4	158.6	0.00	0.00	
1,400.0	11.11	168.23	1,384.4	-174.2	36.3	177.9	0.00	0.00	
1,500.0	11.11	168.23	1,482.6	-193.1	40.2	197.2	0.00	0.00	
1,600.0	11.11	168.23	1,580.7	-211.9	44.2	216.5	0.00	0.00	
1,700.0	11.11	168.23	1,678.8	-230.8	48.1	235.7	0.00	0.00	
1,800.0	11.11	168.23	1,776.9	-249.7	52.0	255.0	0.00	0.00	
1,900.0	11.11	168.23	1,875.1	-268.5	56.0	274.3	0.00	0.00	
2,000.0	11.11	168.23	1,973.2	-287.4	59.9	293.6	0.00	0.00	
2,100.0	11.11	168.23	2,071.3	-306.3	63.8	312.8	0.00	0.00	
2,200.0	11.11	168.23	2,169.4	-325.2	67.8	332.1	0.00	0.00	
2,209.8	11.11	168.23	2,179.0	-327.0	68.2	334.0	0.00	0.00	GARDEN_GULCH_TVD.
2,300.0	11.11	168.23	2,267.6	-344.0	71.7	351.4	0.00	0.00	
2,400.0	11.11	168.23	2,365.7	-362.9	75.6	370.7	0.00	0.00	
2,500.0	11.11	168.23	2,463.8	-381.8	79.6	389.9	0.00	0.00	
2,600.0	11.11	168.23	2,561.9	-400.6	83.5	409.2	0.00	0.00	
2,700.0	11.11	168.23	2,660.1	-419.5	87.4	428.5	0.00	0.00	
2,800.0	11.11	168.23	2,758.2	-438.4	91.4	447.8	0.00	0.00	
2,900.0	11.11	168.23	2,856.3	-457.3	95.3	467.0	0.00	0.00	
3,000.0	11.11	168.23	2,954.4	-476.1	99.2	486.3	0.00	0.00	
3,100.0	11.11	168.23	3,052.6	-495.0	103.2	505.6	0.00	0.00	
3,200.0	11.11	168.23	3,150.7	-513.9	107.1	524.9	0.00	0.00	
3,217.7	11.11	168.23	3,168.0	-517.2	107.8	528.3	0.00	0.00	WASATCH_FM_TVD
3,300.0	11.11	168.23	3,248.8	-532.7	111.0	544.1	0.00	0.00	
3,400.0	11.11	168.23	3,346.9	-551.6	115.0	563.4	0.00	0.00	
3,500.0	11.11	168.23	3,445.1	-570.5	118.9	582.7	0.00	0.00	
3,600.0	11.11	168.23	3,543.2	-589.4	122.8	602.0	0.00	0.00	
3,700.0	11.11	168.23	3,641.3	-608.2	126.8	621.2	0.00	0.00	
3,800.0	11.11	168.23	3,739.4	-627.1	130.7	640.5	0.00	0.00	
3,900.0	11.11	168.23	3,837.5	-646.0	134.6	659.8	0.00	0.00	
4,000.0	11.11	168.23	3,935.7	-664.8	138.6	679.1	0.00	0.00	
4,100.0	11.11	168.23	4,033.8	-683.7	142.5	698.3	0.00	0.00	
4,200.0	11.11	168.23	4,131.9	-702.6	146.4	717.6	0.00	0.00	
4,300.0	11.11	168.23	4,230.0	-721.5	150.4	736.9	0.00	0.00	
4,400.0	11.11	168.23	4,328.2	-740.3	154.3	756.2	0.00	0.00	
4,500.0	11.11	168.23	4,426.3	-759.2	158.2	775.5	0.00	0.00	

# Cathedral Energy Services

## Planning Report

<b>Database:</b>	USA EDM 5000 Multi Users DB	<b>Local Co-ordinate Reference:</b>	Well 8513D-27 L27 496
<b>Company:</b>	EnCana Oil & Gas (USA) Inc	<b>TVD Reference:</b>	Well @ 8136.0ft (Rig)
<b>Project:</b>	Story Gulch	<b>MD Reference:</b>	Well @ 8136.0ft (Rig)
<b>Site:</b>	S27-T4S-R96W (L27 496)	<b>North Reference:</b>	True
<b>Well:</b>	8513D-27 L27 496	<b>Survey Calculation Method:</b>	Minimum Curvature
<b>Wellbore:</b>	DD		
<b>Design:</b>	Plan #1		

Planned Survey									
Measured Depth (ft)	Inclination (°)	Azimuth (°)	Vertical Depth (ft)	+N/-S (ft)	+E/-W (ft)	Vertical Section (ft)	Dogleg Rate (°/100ft)	Build Rate (°/100ft)	Comments / Formations
4,600.0	11.11	168.23	4,524.4	-778.1	162.2	794.7	0.00	0.00	
4,700.0	11.11	168.23	4,622.5	-796.9	166.1	814.0	0.00	0.00	
4,800.0	11.11	168.23	4,720.7	-815.8	170.0	833.3	0.00	0.00	
4,900.0	11.11	168.23	4,818.8	-834.7	174.0	852.6	0.00	0.00	
5,000.0	11.11	168.23	4,916.9	-853.6	177.9	871.8	0.00	0.00	
5,100.0	11.11	168.23	5,015.0	-872.4	181.8	891.1	0.00	0.00	
5,200.0	11.11	168.23	5,113.2	-891.3	185.8	910.4	0.00	0.00	
5,300.0	11.11	168.23	5,211.3	-910.2	189.7	929.7	0.00	0.00	
5,400.0	11.11	168.23	5,309.4	-929.0	193.6	948.9	0.00	0.00	
5,461.7	11.11	168.23	5,370.0	-940.7	196.1	960.8	0.00	0.00	WASATCH_G_TVD
5,500.0	11.11	168.23	5,407.5	-947.9	197.6	968.2	0.00	0.00	
5,600.0	11.11	168.23	5,505.7	-966.8	201.5	987.5	0.00	0.00	
5,700.0	11.11	168.23	5,603.8	-985.7	205.4	1,006.8	0.00	0.00	
5,800.0	11.11	168.23	5,701.9	-1,004.5	209.4	1,026.0	0.00	0.00	
5,900.0	11.11	168.23	5,800.0	-1,023.4	213.3	1,045.3	0.00	0.00	
6,000.0	11.11	168.23	5,898.2	-1,042.3	217.2	1,064.6	0.00	0.00	
6,100.0	11.11	168.23	5,996.3	-1,061.1	221.2	1,083.9	0.00	0.00	
6,200.0	11.11	168.23	6,094.4	-1,080.0	225.1	1,103.1	0.00	0.00	
6,300.0	11.11	168.23	6,192.5	-1,098.9	229.0	1,122.4	0.00	0.00	
6,400.0	11.11	168.23	6,290.7	-1,117.8	233.0	1,141.7	0.00	0.00	
6,500.0	11.11	168.23	6,388.8	-1,136.6	236.9	1,161.0	0.00	0.00	
6,600.0	11.11	168.23	6,486.9	-1,155.5	240.8	1,180.2	0.00	0.00	
6,700.0	11.11	168.23	6,585.0	-1,174.4	244.8	1,199.5	0.00	0.00	
6,800.0	11.11	168.23	6,683.2	-1,193.2	248.7	1,218.8	0.00	0.00	
6,900.0	11.11	168.23	6,781.3	-1,212.1	252.6	1,238.1	0.00	0.00	
7,000.0	11.11	168.23	6,879.4	-1,231.0	256.6	1,257.3	0.00	0.00	
7,100.0	11.11	168.23	6,977.5	-1,249.8	260.5	1,276.6	0.00	0.00	
7,179.7	11.11	168.23	7,055.8	-1,264.9	263.6	1,292.0	0.00	0.00	Start 2° Drop @ 7179.7' MD
7,200.0	10.71	168.23	7,075.7	-1,268.7	264.4	1,295.8	2.00	-2.00	
7,300.0	8.71	168.23	7,174.2	-1,285.2	267.9	1,312.7	2.00	-2.00	
7,400.0	6.71	168.23	7,273.3	-1,298.3	270.6	1,326.1	2.00	-2.00	
7,500.0	4.71	168.23	7,372.8	-1,308.0	272.6	1,336.0	2.00	-2.00	
7,600.0	2.71	168.23	7,472.6	-1,314.4	273.9	1,342.5	2.00	-2.00	
7,695.4	0.80	168.23	7,568.0	-1,317.2	274.5	1,345.4	2.00	-2.00	WILLIAMS_FORK_TVD
7,700.0	0.71	168.23	7,572.6	-1,317.3	274.6	1,345.5	2.00	-2.00	
7,735.4	0.00	0.00	7,608.0	-1,317.5	274.6	1,345.7	2.00	-2.00	EOD @ 7735.4' MD - TOG TVD
7,800.0	0.16	236.24	7,672.6	-1,317.5	274.5	1,345.7	0.25	0.25	
7,828.7	0.23	236.24	7,701.2	-1,317.6	274.4	1,345.8	0.25	0.25	
7,900.0	0.23	236.24	7,772.6	-1,317.8	274.2	1,345.9	0.00	0.00	
8,000.0	0.23	236.24	7,872.6	-1,318.0	273.9	1,346.0	0.00	0.00	
8,100.0	0.23	236.24	7,972.6	-1,318.2	273.5	1,346.2	0.00	0.00	
8,200.0	0.23	236.24	8,072.6	-1,318.4	273.2	1,346.4	0.00	0.00	
8,300.0	0.23	236.24	8,172.6	-1,318.7	272.8	1,346.5	0.00	0.00	
8,400.0	0.23	236.24	8,272.6	-1,318.9	272.5	1,346.7	0.00	0.00	
8,500.0	0.23	236.24	8,372.5	-1,319.1	272.2	1,346.8	0.00	0.00	
8,600.0	0.23	236.24	8,472.5	-1,319.3	271.8	1,347.0	0.00	0.00	
8,700.0	0.23	236.24	8,572.5	-1,319.6	271.5	1,347.1	0.00	0.00	
8,800.0	0.23	236.24	8,672.5	-1,319.8	271.2	1,347.3	0.00	0.00	
8,900.0	0.23	236.24	8,772.5	-1,320.0	270.8	1,347.5	0.00	0.00	
9,000.0	0.23	236.24	8,872.5	-1,320.2	270.5	1,347.6	0.00	0.00	
9,100.0	0.23	236.24	8,972.5	-1,320.5	270.1	1,347.8	0.00	0.00	
9,200.0	0.23	236.24	9,072.5	-1,320.7	269.8	1,347.9	0.00	0.00	

# Cathedral Energy Services

## Planning Report

<b>Database:</b>	USA EDM 5000 Multi Users DB	<b>Local Co-ordinate Reference:</b>	Well 8513D-27 L27 496
<b>Company:</b>	EnCana Oil & Gas (USA) Inc	<b>TVD Reference:</b>	Well @ 8136.0ft (Rig)
<b>Project:</b>	Story Gulch	<b>MD Reference:</b>	Well @ 8136.0ft (Rig)
<b>Site:</b>	S27-T4S-R96W (L27 496)	<b>North Reference:</b>	True
<b>Well:</b>	8513D-27 L27 496	<b>Survey Calculation Method:</b>	Minimum Curvature
<b>Wellbore:</b>	DD		
<b>Design:</b>	Plan #1		

Planned Survey									
Measured Depth (ft)	Inclination (°)	Azimuth (°)	Vertical Depth (ft)	+N/-S (ft)	+E/-W (ft)	Vertical Section (ft)	Dogleg Rate (°/100ft)	Build Rate (°/100ft)	Comments / Formations
9,300.0	0.23	236.24	9,172.5	-1,320.9	269.5	1,348.1	0.00	0.00	
9,400.0	0.23	236.24	9,272.5	-1,321.2	269.1	1,348.2	0.00	0.00	
9,500.0	0.23	236.24	9,372.5	-1,321.4	268.8	1,348.4	0.00	0.00	
9,600.0	0.23	236.24	9,472.5	-1,321.6	268.5	1,348.6	0.00	0.00	
9,700.0	0.23	236.24	9,572.5	-1,321.8	268.1	1,348.7	0.00	0.00	
9,800.0	0.23	236.24	9,672.5	-1,322.1	267.8	1,348.9	0.00	0.00	
9,900.0	0.23	236.24	9,772.5	-1,322.3	267.4	1,349.0	0.00	0.00	
10,000.0	0.23	236.24	9,872.5	-1,322.5	267.1	1,349.2	0.00	0.00	
10,100.0	0.23	236.24	9,972.5	-1,322.7	266.8	1,349.3	0.00	0.00	
10,200.0	0.23	236.24	10,072.5	-1,323.0	266.4	1,349.5	0.00	0.00	
10,300.0	0.23	236.24	10,172.5	-1,323.2	266.1	1,349.7	0.00	0.00	
10,400.0	0.23	236.24	10,272.5	-1,323.4	265.7	1,349.8	0.00	0.00	
10,500.0	0.23	236.24	10,372.5	-1,323.6	265.4	1,350.0	0.00	0.00	
10,600.0	0.23	236.24	10,472.5	-1,323.9	265.1	1,350.1	0.00	0.00	
10,700.0	0.23	236.24	10,572.5	-1,324.1	264.7	1,350.3	0.00	0.00	
10,800.0	0.23	236.24	10,672.5	-1,324.3	264.4	1,350.4	0.00	0.00	
10,888.5	0.23	236.24	10,761.0	-1,324.5	264.1	1,350.6	0.00	0.00	CAMEO_TVD
10,900.0	0.23	236.24	10,772.5	-1,324.5	264.1	1,350.6	0.00	0.00	
11,000.0	0.23	236.24	10,872.5	-1,324.8	263.7	1,350.8	0.00	0.00	
11,100.0	0.23	236.24	10,972.5	-1,325.0	263.4	1,350.9	0.00	0.00	
11,200.0	0.23	236.24	11,072.5	-1,325.2	263.0	1,351.1	0.00	0.00	
11,300.0	0.23	236.24	11,172.5	-1,325.4	262.7	1,351.2	0.00	0.00	
11,335.5	0.23	236.24	11,208.0	-1,325.5	262.6	1,351.3	0.00	0.00	ROLLINS_TVD
11,400.0	0.23	236.24	11,272.5	-1,325.7	262.4	1,351.4	0.00	0.00	
11,500.0	0.23	236.24	11,372.5	-1,325.9	262.0	1,351.5	0.00	0.00	
11,567.5	0.23	236.24	11,440.0	-1,326.1	261.8	1,351.6	0.00	0.00	COZZETTE_TVD
11,600.0	0.23	236.24	11,472.5	-1,326.1	261.7	1,351.7	0.00	0.00	
11,700.0	0.23	236.24	11,572.5	-1,326.4	261.4	1,351.9	0.00	0.00	
11,753.5	0.23	236.24	11,626.0	-1,326.5	261.2	1,351.9	0.00	0.00	CORCORAN_TVD
11,800.0	0.23	236.24	11,672.5	-1,326.6	261.0	1,352.0	0.00	0.00	
11,900.0	0.23	236.24	11,772.5	-1,326.8	260.7	1,352.2	0.00	0.00	
12,000.0	0.23	236.24	11,872.5	-1,327.0	260.3	1,352.3	0.00	0.00	
12,062.5	0.23	236.24	11,935.0	-1,327.2	260.1	1,352.4	0.00	0.00	UPPER_SEGO_TVD
12,100.0	0.23	236.24	11,972.5	-1,327.3	260.0	1,352.5	0.00	0.00	
12,200.0	0.23	236.24	12,072.5	-1,327.5	259.7	1,352.6	0.00	0.00	
12,212.5	0.23	236.24	12,085.0	-1,327.5	259.6	1,352.7	0.00	0.00	TD @ 12212.5' MD - SEGO_BASE_TARGET_1
12,300.0	0.23	236.24	12,172.5	-1,327.7	259.3	1,352.8	0.00	0.00	
12,362.5	0.23	236.24	12,235.0	-1,327.8	259.1	1,352.9	0.00	0.00	Permit TD @ 12362.5' MD

Targets									
Target Name	Dip Angle (°)	Dip Dir. (°)	TVD (ft)	+N/-S (ft)	+E/-W (ft)	Northing (ft)	Easting (ft)	Latitude	Longitude
- hit/miss target									
- Shape									
L27 496 8513D-27 TGT	0.00	0.00	7,608.0	-1,317.5	274.6	1,678,945.00	2,251,478.08	39° 40' 2.70 N	108° 9' 33.55 W
- plan hits target center									
- Point									
L27 496 8513D-27 PBHI	0.00	0.00	12,085.0	-1,327.5	259.6	1,678,935.43	2,251,462.81	39° 40' 2.60 N	108° 9' 33.74 W
- plan hits target center									
- Rectangle (sides W30.0 H50.0 D0.0)									

# Cathedral Energy Services

## Planning Report

<b>Database:</b>	USA EDM 5000 Multi Users DB	<b>Local Co-ordinate Reference:</b>	Well 8513D-27 L27 496
<b>Company:</b>	EnCana Oil & Gas (USA) Inc	<b>TVD Reference:</b>	Well @ 8136.0ft (Rig)
<b>Project:</b>	Story Gulch	<b>MD Reference:</b>	Well @ 8136.0ft (Rig)
<b>Site:</b>	S27-T4S-R96W (L27 496)	<b>North Reference:</b>	True
<b>Well:</b>	8513D-27 L27 496	<b>Survey Calculation Method:</b>	Minimum Curvature
<b>Wellbore:</b>	DD		
<b>Design:</b>	Plan #1		

### Formations

Measured Depth (ft)	Vertical Depth (ft)	Name	Lithology	Dip (°)	Dip Direction (°)
1,069.4	1,060.0	A_GROOVE_TVD			
1,225.3	1,213.0	B_GROOVE_TVD			
1,258.9	1,246.0	B_GROOVE_BASE_TVD			
2,209.8	2,179.0	GARDEN_GULCH_TVD.			
3,217.7	3,168.0	WASATCH_FM_TVD			
5,461.7	5,370.0	WASATCH_G_TVD			
7,695.4	7,568.0	WILLIAMS_FORK_TVD			
7,735.4	7,608.0	TOG TVD			
10,888.5	10,761.0	CAMEO_TVD			
11,335.5	11,208.0	ROLLINS_TVD			
11,567.5	11,440.0	COZZETTE_TVD			
11,753.5	11,626.0	CORCORAN_TVD			
12,062.5	11,935.0	UPPER_SEGO_TVD			
12,212.5	12,085.0	SEGO_BASE_TARGET_TVD			

### Plan Annotations

Measured Depth (ft)	Vertical Depth (ft)	Local Coordinates		Comment
		+N/-S (ft)	+E/-W (ft)	
200.0	200.0	0.0	0.0	KOP @ 200' MD
755.7	752.2	-52.6	11.0	EOB; Inc=11.11°
7,179.7	7,055.8	-1,264.9	263.6	Start 2° Drop @ 7179.7' MD
7,735.4	7,608.0	-1,317.5	274.6	EOD @ 7735.4' MD
12,212.5	12,085.0	-1,317.6	274.4	TD @ 12212.5' MD
12,362.5	12,235.0	-1,327.5	259.6	Permit TD @ 12362.5' MD