

Box Elder G-4 (BEFORE P&A)

Revised (1/22/2013)



Bill Barrett Corporation

DESCRIPTION DEPTH WELLBORE WELL HISTORY

8-5/8" 24# Surface Casing: 224'

DV Tool (cement to surface):  
2nd Stage 1663'

5-1/2" Production TOC (calc):  
1st Stage 7146'

Top of Niobrara 7218'

2-7/8" Production Tubing (255 jis): 8,010'

5-1/2" 17# Production Casing: 8,142'

PBTD: 8,105'

Zone Perforation Data  
J Sand Top (ft) Bottom (ft) 2 spf  
8031 8049

WELL: Box Elder G-4  
LOCATION: NENW SEC 24 T2S R65W  
FORMATION: J Sand  
API #: 05-001-06669  
Field: Ambush  
CLASSIFICATION:  
CURRENT STATUS: Shut In  
Spud: 5/15/1973  
TD: 5/25/1973  
1st Sales: 6/19/1973

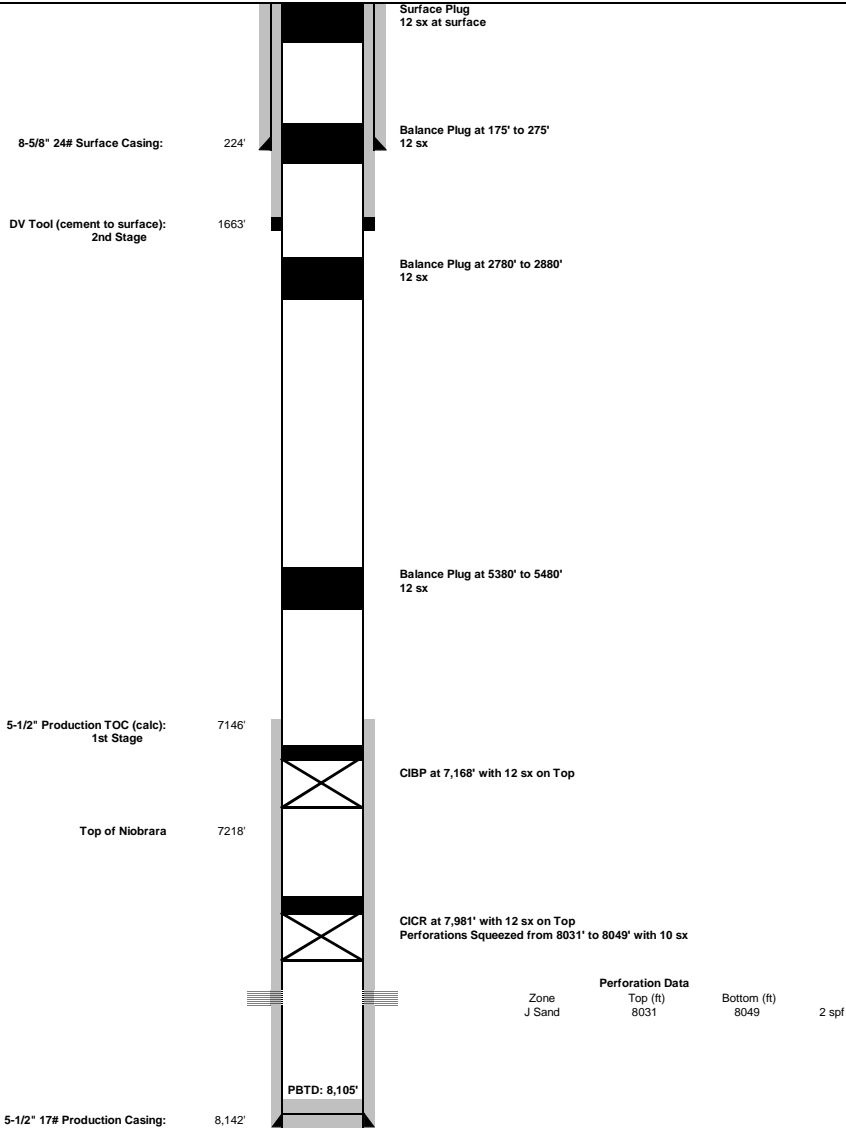
TUBULAR DATA							
Type	Size	Weight	Grade	Top	Bottom	Burst	Collapse
Surface	8 5/8"	24.0 ppf	-	0	224'		
Production	5 1/2"	17.0 ppf	-	0	8,142'		
Tubing	2 7/8"	6.5 ppf	-	0	8,010'		

Box Elder G-4 (AFTER P&A)

Revised (1/22/2013)



DESCRIPTION DEPTH WELLBORE WELL HISTORY



**WELL:** Box Elder G-4  
**LOCATION:** NENW SEC 24 T2S R65W  
**FORMATION:** J Sand  
**API #:** 05-001-06669  
**Field:** Ambush  
**CLASSIFICATION:**  
**CURRENT STATUS:** Shut In  
**Spud:** 5/15/1973  
**TD:** 5/25/1973  
**1st Sales:** 6/19/1973

TUBULAR DATA							
Type	Size	Weight	Grade	Top	Bottom	Burst	Collapse
Surface	8 5/8"	24.0 ppf	-	0	224'		
Production	5 1/2"	17.0 ppf	-	0	8,142'		
Tubing	-	-	-	-	-		