

WELL LOCATION PLAT
T9N, R60W, 6th P.M.

NOBLE ENERGY, INC.

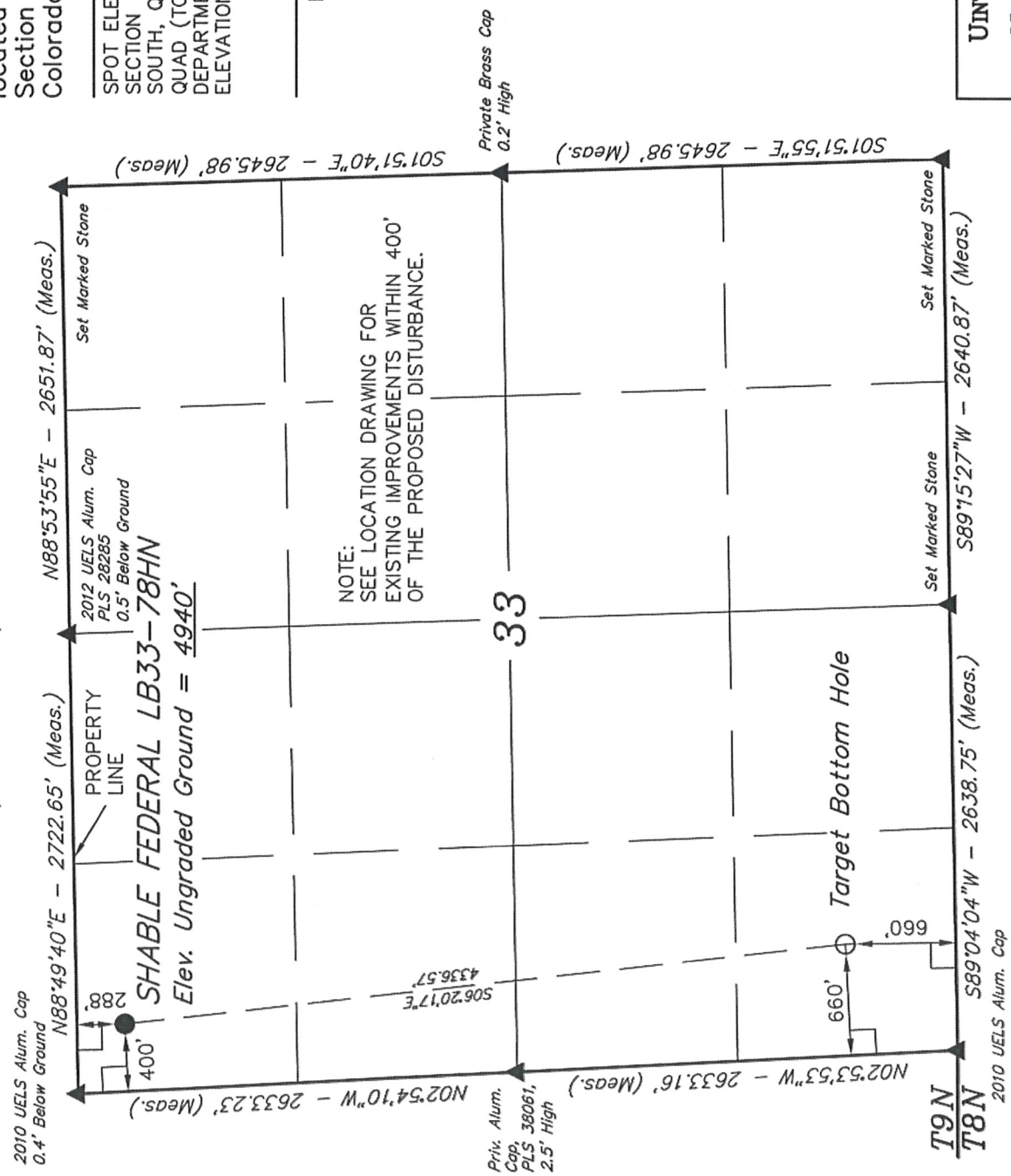
Well location, SHABLE FEDERAL LB33-78HN, located as shown in the NW 1/4 NW 1/4 of Section 33, T9N, R60W, 6th P.M., Weld County, Colorado.

BASIS OF ELEVATION

SPOT ELEVATION LOCATED AT THE NORTHEAST CORNER OF SECTION 2, T9N, R61W, 6th P.M., TAKEN FROM THE GROVER SOUTH, QUADRANGLE, COLORADO, WELD COUNTY, 7.5 MINUTE QUAD (TOPOGRAPHICAL MAP) PUBLISHED BY THE UNITED STATES DEPARTMENT OF THE INTERIOR, GEOLOGICAL SURVEY. SAID ELEVATION IS MARKED AS BEING 5043 FEET.

BASIS OF BEARINGS

BASIS OF BEARINGS IS A G.P.S. OBSERVATION.



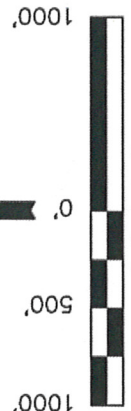
LEGEND:

- = 90° SYMBOL
- = PROPOSED WELL HEAD.
- ▲ = SECTION CORNERS LOCATED.

FEATURE TABLE		
EXISTING FEATURE	DIRECTION	LENGTH
PROPERTY LINE	NORTH	288'

NAD 83 (TARGET BOTTOM HOLE)		NAD 83 (SURFACE LOCATION)	
LATITUDE = 40°42'02.08" (40.700578)		LATITUDE = 40°42'44.67" (40.712408)	
LONGITUDE = 104°06'14.95" (104.104153)		LONGITUDE = 104°06'21.12" (104.105867)	

PDOP = 2.1



CERTIFICATE

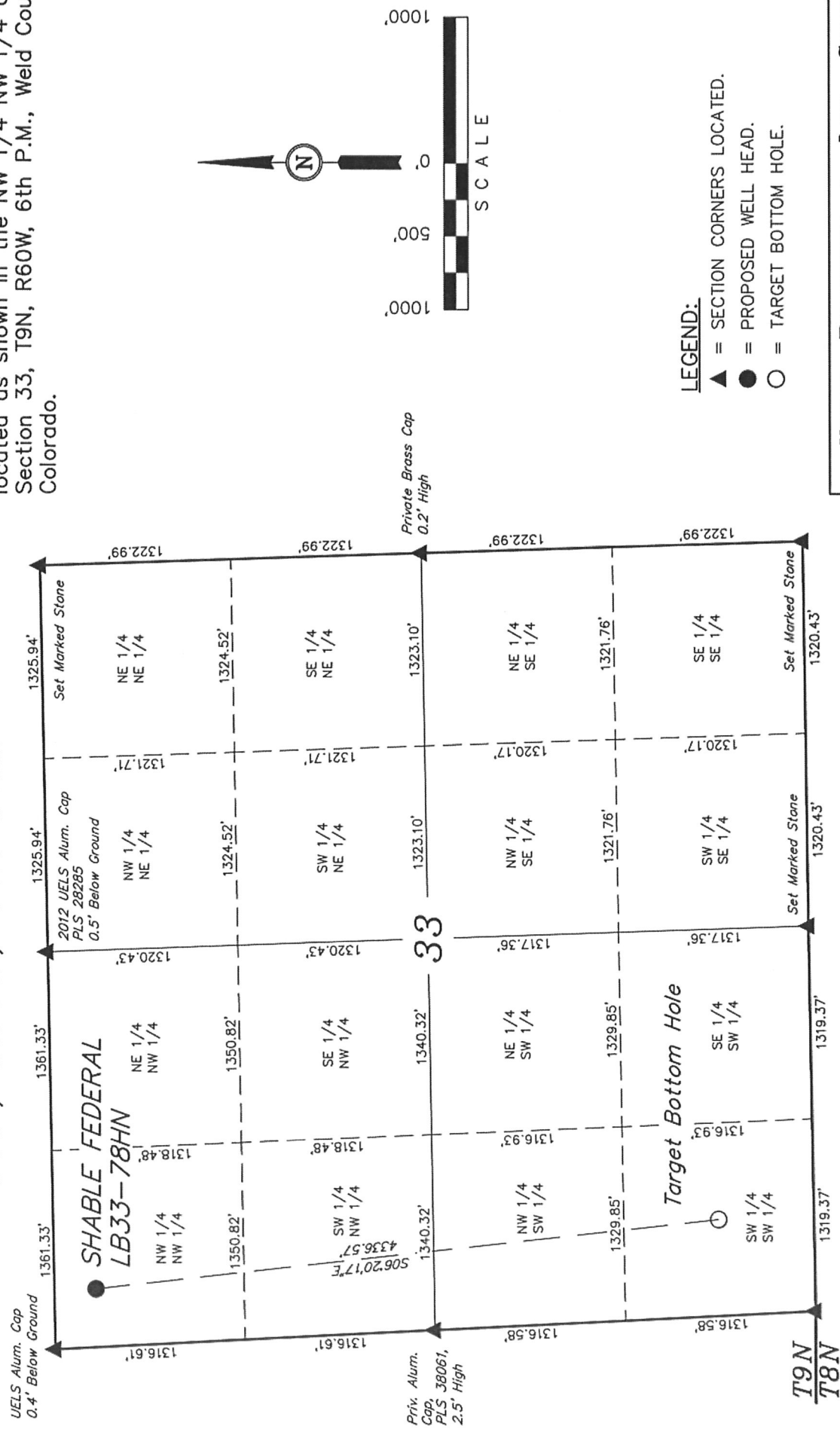
THIS IS TO CERTIFY THAT THE ABOVE PLAT WAS PREPARED FROM FIELD NOTES OF ACTUAL SURVEYS MADE BY ME OR UNDER MY SUPERVISION AND THAT THE SAME ARE TRUE AND CORRECT TO THE BEST OF MY KNOWLEDGE AND BELIEF.

REGISTERED LAND SURVEYOR
REGISTRATION NO. 17499
STATE OF COLORADO
09-18-12

UTAH ENGINEERING & LAND SURVEYING	
85 SOUTH 200 EAST - VERNAL, UTAH 84078	
(435) 789-1017	
SCALE 1" = 1000'	DATE SURVEYED: 06-01-12
DATE DRAWN: 09-10-12	
PARTY DAVE SWANSON C.T. J.M.H.	REFERENCES G.L.O. PLAT
WEATHER WARM	FILE

NOBLE ENERGY, INC.

Well location, SHABLE FEDERAL LB33-78HN, located as shown in the NW 1/4 NW 1/4 of Section 33, T9N, R60W, 6th P.M., Weld County, Colorado.



NO WELLS WITHIN SECTION

UTAH ENGINEERING & LAND SURVEYING
85 SOUTH 200 EAST - VERNAL, UTAH 84078
(435) 789-1017

SCALE	1" = 1000'	DATE SURVEYED:	DATE DRAWN:
PARTY		06-01-12	09-10-12
DAVE SWANSON	C.T. J.M.H.	REFERENCES	
WEATHER		G.L.O. PLAT	
		FILE	
	WARM	NOBLE ENERGY, INC.	