

Condor Energy, Weld County, CO

Well Name: **Waves 3H**

Surface Location: Waves 3H Pad Sec.17-T7N-R59W

North American Datum 1983, US State Plane 1983, Colorado Northern Zone

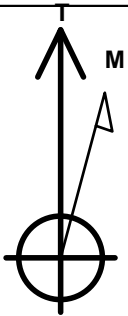
Ground Elevation: 4942.0

+N/-S	+E/-W	Northing	Easting	Latitude	Longitude	Slot
0.0	0.0	1453455.42	3416265.74	40.568480	-104.001590	

RKB - 12.5' WELL @ 4954.5ft (RKB - 12.5')

WELLBORE TARGET DETAILS

Name	TVD	+N/-S	+E/-W	Shape
HARDLINE BHL 600'	1.0	4406.8	4969.4	Polygon
HARDLINE SHL 600'	1.0	354.0	-250.0	Polygon
SECTIONLINE 246'S OF SHL	1.0	-246.0	-250.0	Polygon
SHL 246'FSL & 2368'FEL, SEC.17	1.0	0.0	0.0	Point
BHL 660'FNL & 2340'FWL, SEC.16	6139.5	4346.8	4769.4	Point
WP1	6144.5	2651.0	2903.0	Point
T1 615'FSL & 1990'FEL	6172.5	364.3	383.4	Point



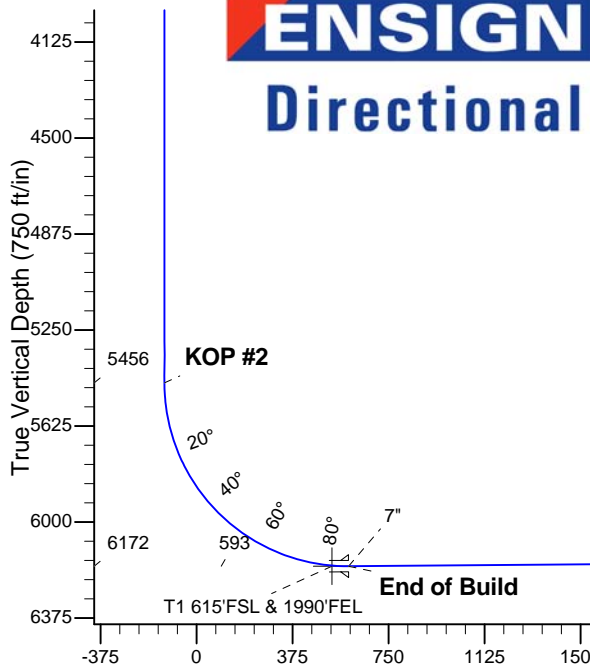
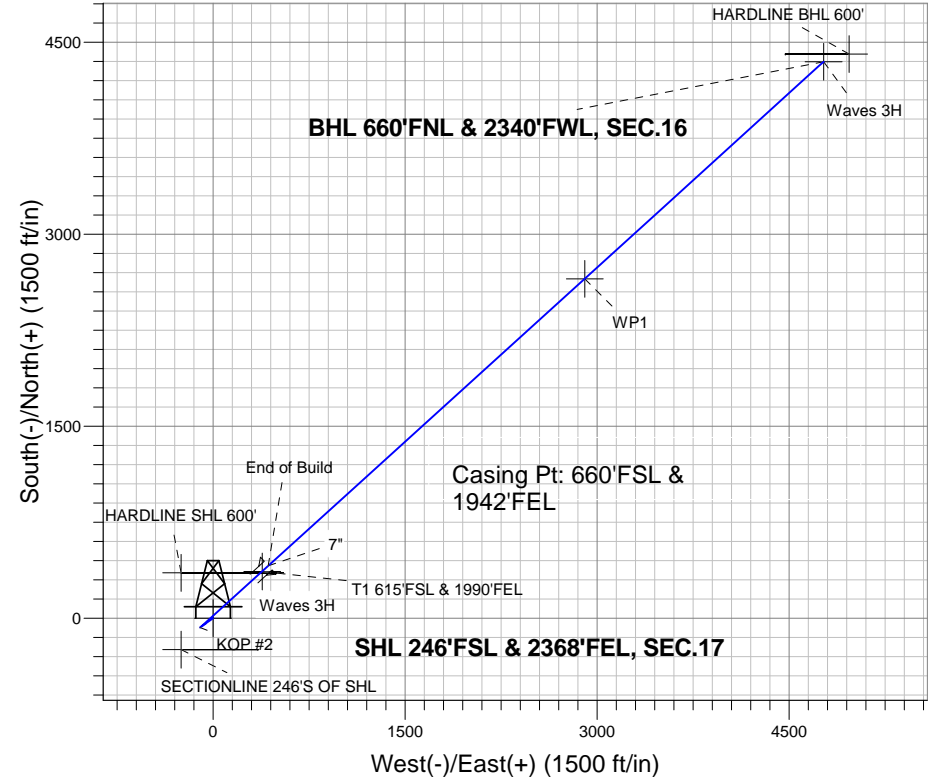
Azimuths to True North
Magnetic North: 8.26°

Magnetic Field
Strength: 53140.5nT
Dip Angle: 67.26°
Date: 12/10/2012
Model: IGRF2010

Waves 3H Pad Sec.17-T7N-R59W
Waves 3H
Plan #1 (12-10-12)
10:31, December 12 2012

ANNOTATIONS

TVD	MD	Annotation
2500.0	2500.0	KOP #1
5456.3	5462.4	KOP #2
6172.5	6589.9	End of Build



SECTION DETAILS

Sec	MD	Inc	Azi	TVD	+N/-S	+E/-W	DLeg	TFace	VSec	Target
1	0.0	0.00	0.00	0.0	0.0	0.0	0.00	0.00	0.0	
2	2500.0	0.00	0.00	2500.0	0.0	0.0	0.00	0.00	0.0	
3	2799.7	5.99	234.04	2799.2	-9.2	-12.7	2.00	234.04	-15.6	
4	3706.3	5.99	234.04	3700.8	-64.8	-89.3	0.00	0.00	-109.7	
5	4006.1	0.00	0.00	4000.0	-74.0	-102.0	2.00	180.00	-125.2	
6	5462.4	0.00	0.00	5456.3	-74.0	-102.0	0.00	0.00	-125.2	
7	6589.9	90.20	47.82	6172.5	408.6	430.6	8.00	47.82	593.5	
8	6590.5	90.20	47.82	6172.5	409.0	431.0	0.00	0.00	594.1	
9	6604.6	90.48	47.79	6172.4	418.5	441.5	2.00	-4.91	608.2	
10	9927.8	90.48	47.79	6144.5	2651.0	2903.0	0.00	0.00	3931.3	WP1
11	9946.5	90.11	47.74	6144.4	2663.5	2916.8	2.00	-172.02	3949.9	
12	12449.6	90.11	47.74	6139.5	4346.8	4769.4	0.00	0.00	6453.1	BHL 660'FNL & 2340'FWL, SEC.16

BHL 660'FNL & 2340'FWL, SEC.16

Vertical Section at 47.65° (750 ft/in)



Condor Energy, Weld County, CO

SEC.17-T7N-R59W

Waves 3H Pad Sec.17-T7N-R59W

Waves 3H

Wellbore #1

Plan: Plan #1 (12-10-12)

Standard Planning Report

12 December, 2012

Database:	Landmark	Local Co-ordinate Reference:	Well Waves 3H
Company:	Condor Energy, Weld County, CO	TVD Reference:	WELL @ 4954.5ft (RKB - 12.5')
Project:	SEC.17-T7N-R59W	MD Reference:	WELL @ 4954.5ft (RKB - 12.5')
Site:	Waves 3H Pad Sec.17-T7N-R59W	North Reference:	True
Well:	Waves 3H	Survey Calculation Method:	Minimum Curvature
Wellbore:	Wellbore #1		
Design:	Plan #1 (12-10-12)		

Project	SEC.17-T7N-R59W, Weld County, CO		
Map System:	US State Plane 1983	System Datum:	Mean Sea Level
Geo Datum:	North American Datum 1983		Using Well Reference Point
Map Zone:	Colorado Northern Zone		Using geodetic scale factor

Site		Waves 3H Pad Sec.17-T7N-R59W			
Site Position:		Northing:	1,453,455.42 ft	Latitude:	40.568480
From:	Lat/Long	Easting:	3,416,265.74 ft	Longitude:	-104.001590
Position Uncertainty:	0.0 ft	Slot Radius:	"	Grid Convergence:	0.97 °

Well	Waves 3H					
Well Position	+N-S	0.0 ft	Northing:	1,453,455.42 ft	Latitude:	40.568480
	+E-W	0.0 ft	Easting:	3,416,265.74 ft	Longitude:	-104.001590
Position Uncertainty		0.0 ft	Wellhead Elevation:	ft	Ground Level:	4,942.0 ft

Wellbore	Wellbore #1				
Magnetics	Model Name	Sample Date	Declination (°)	Dip Angle (°)	Field Strength (nT)
	IGRF2010	12/10/2012	8.26	67.26	53,140

Design	Plan #1 (12-10-12)			
Audit Notes:				
Version:	Phase:	PROTOTYPE	Tie On Depth:	0.0
Vertical Section:	Depth From (TVD) (ft)	+N/-S (ft)	+E/-W (ft)	Direction (°)
	0.0	0.0	0.0	47.65

Plan Sections										
Measured Depth (ft)	Inclination (°)	Azimuth (°)	Vertical Depth (ft)	+N/-S (ft)	+E/-W (ft)	Dogleg Rate (°/100ft)	Build Rate (°/100ft)	Turn Rate (°/100ft)	TFO (°)	Target
0.0	0.00	0.00	0.0	0.0	0.0	0.00	0.00	0.00	0.00	
2,500.0	0.00	0.00	2,500.0	0.0	0.0	0.00	0.00	0.00	0.00	
2,799.7	5.99	234.04	2,799.2	-9.2	-12.7	2.00	2.00	0.00	234.04	
3,706.3	5.99	234.04	3,700.8	-64.8	-89.3	0.00	0.00	0.00	0.00	
4,006.1	0.00	0.00	4,000.0	-74.0	-102.0	2.00	-2.00	0.00	180.00	
5,462.4	0.00	0.00	5,456.3	-74.0	-102.0	0.00	0.00	0.00	0.00	
6,589.9	90.20	47.82	6,172.5	408.6	430.6	8.00	8.00	0.00	47.82	
6,590.5	90.20	47.82	6,172.5	409.0	431.0	0.00	0.00	0.00	0.00	
6,604.6	90.48	47.79	6,172.4	418.5	441.5	2.00	1.99	-0.17	-4.91	
9,927.8	90.48	47.79	6,144.5	2,651.0	2,903.0	0.00	0.00	0.00	0.00	WP1
9,946.5	90.11	47.74	6,144.4	2,663.5	2,916.8	2.00	-1.98	-0.28	-172.02	
12,449.6	90.11	47.74	6,139.5	4,346.8	4,769.4	0.00	0.00	0.00	0.00	BHL 660'FNL & 234

Database:	Landmark	Local Co-ordinate Reference:	Well Waves 3H
Company:	Condor Energy, Weld County, CO	TVD Reference:	WELL @ 4954.5ft (RKB - 12.5')
Project:	SEC.17-T7N-R59W	MD Reference:	WELL @ 4954.5ft (RKB - 12.5')
Site:	Waves 3H Pad Sec.17-T7N-R59W	North Reference:	True
Well:	Waves 3H	Survey Calculation Method:	Minimum Curvature
Wellbore:	Wellbore #1		
Design:	Plan #1 (12-10-12)		

Planned Survey									
Measured Depth (ft)	Inclination (°)	Azimuth (°)	Vertical Depth (ft)	+N/-S (ft)	+E/-W (ft)	Vertical Section (ft)	Dogleg Rate (°/100ft)	Build Rate (°/100ft)	Turn Rate (°/100ft)
0.0	0.00	0.00	0.0	0.0	0.0	0.0	0.00	0.00	0.00
1.0	0.00	0.00	1.0	0.0	0.0	0.0	0.00	0.00	0.00
HARDLINE SHL 600' - SHL 246'FSL & 2368'FEL, SEC.17 - SECTIONLINE 246'S OF SHL									
40.0	0.00	0.00	40.0	0.0	0.0	0.0	0.00	0.00	0.00
80.0	0.00	0.00	80.0	0.0	0.0	0.0	0.00	0.00	0.00
120.0	0.00	0.00	120.0	0.0	0.0	0.0	0.00	0.00	0.00
160.0	0.00	0.00	160.0	0.0	0.0	0.0	0.00	0.00	0.00
200.0	0.00	0.00	200.0	0.0	0.0	0.0	0.00	0.00	0.00
240.0	0.00	0.00	240.0	0.0	0.0	0.0	0.00	0.00	0.00
280.0	0.00	0.00	280.0	0.0	0.0	0.0	0.00	0.00	0.00
320.0	0.00	0.00	320.0	0.0	0.0	0.0	0.00	0.00	0.00
360.0	0.00	0.00	360.0	0.0	0.0	0.0	0.00	0.00	0.00
400.0	0.00	0.00	400.0	0.0	0.0	0.0	0.00	0.00	0.00
440.0	0.00	0.00	440.0	0.0	0.0	0.0	0.00	0.00	0.00
480.0	0.00	0.00	480.0	0.0	0.0	0.0	0.00	0.00	0.00
520.0	0.00	0.00	520.0	0.0	0.0	0.0	0.00	0.00	0.00
560.0	0.00	0.00	560.0	0.0	0.0	0.0	0.00	0.00	0.00
600.0	0.00	0.00	600.0	0.0	0.0	0.0	0.00	0.00	0.00
640.0	0.00	0.00	640.0	0.0	0.0	0.0	0.00	0.00	0.00
680.0	0.00	0.00	680.0	0.0	0.0	0.0	0.00	0.00	0.00
720.0	0.00	0.00	720.0	0.0	0.0	0.0	0.00	0.00	0.00
760.0	0.00	0.00	760.0	0.0	0.0	0.0	0.00	0.00	0.00
800.0	0.00	0.00	800.0	0.0	0.0	0.0	0.00	0.00	0.00
840.0	0.00	0.00	840.0	0.0	0.0	0.0	0.00	0.00	0.00
880.0	0.00	0.00	880.0	0.0	0.0	0.0	0.00	0.00	0.00
920.0	0.00	0.00	920.0	0.0	0.0	0.0	0.00	0.00	0.00
960.0	0.00	0.00	960.0	0.0	0.0	0.0	0.00	0.00	0.00
1,000.0	0.00	0.00	1,000.0	0.0	0.0	0.0	0.00	0.00	0.00
1,040.0	0.00	0.00	1,040.0	0.0	0.0	0.0	0.00	0.00	0.00
1,080.0	0.00	0.00	1,080.0	0.0	0.0	0.0	0.00	0.00	0.00
1,120.0	0.00	0.00	1,120.0	0.0	0.0	0.0	0.00	0.00	0.00
1,160.0	0.00	0.00	1,160.0	0.0	0.0	0.0	0.00	0.00	0.00
1,200.0	0.00	0.00	1,200.0	0.0	0.0	0.0	0.00	0.00	0.00
1,240.0	0.00	0.00	1,240.0	0.0	0.0	0.0	0.00	0.00	0.00
1,280.0	0.00	0.00	1,280.0	0.0	0.0	0.0	0.00	0.00	0.00
1,320.0	0.00	0.00	1,320.0	0.0	0.0	0.0	0.00	0.00	0.00
1,360.0	0.00	0.00	1,360.0	0.0	0.0	0.0	0.00	0.00	0.00
1,400.0	0.00	0.00	1,400.0	0.0	0.0	0.0	0.00	0.00	0.00
1,440.0	0.00	0.00	1,440.0	0.0	0.0	0.0	0.00	0.00	0.00
1,480.0	0.00	0.00	1,480.0	0.0	0.0	0.0	0.00	0.00	0.00
1,520.0	0.00	0.00	1,520.0	0.0	0.0	0.0	0.00	0.00	0.00
1,560.0	0.00	0.00	1,560.0	0.0	0.0	0.0	0.00	0.00	0.00
1,600.0	0.00	0.00	1,600.0	0.0	0.0	0.0	0.00	0.00	0.00
1,640.0	0.00	0.00	1,640.0	0.0	0.0	0.0	0.00	0.00	0.00
1,680.0	0.00	0.00	1,680.0	0.0	0.0	0.0	0.00	0.00	0.00
1,720.0	0.00	0.00	1,720.0	0.0	0.0	0.0	0.00	0.00	0.00
1,760.0	0.00	0.00	1,760.0	0.0	0.0	0.0	0.00	0.00	0.00
1,800.0	0.00	0.00	1,800.0	0.0	0.0	0.0	0.00	0.00	0.00
1,840.0	0.00	0.00	1,840.0	0.0	0.0	0.0	0.00	0.00	0.00
1,880.0	0.00	0.00	1,880.0	0.0	0.0	0.0	0.00	0.00	0.00
1,920.0	0.00	0.00	1,920.0	0.0	0.0	0.0	0.00	0.00	0.00
1,960.0	0.00	0.00	1,960.0	0.0	0.0	0.0	0.00	0.00	0.00
2,000.0	0.00	0.00	2,000.0	0.0	0.0	0.0	0.00	0.00	0.00
2,040.0	0.00	0.00	2,040.0	0.0	0.0	0.0	0.00	0.00	0.00

Database:	Landmark	Local Co-ordinate Reference:	Well Waves 3H
Company:	Condor Energy, Weld County, CO	TVD Reference:	WELL @ 4954.5ft (RKB - 12.5')
Project:	SEC.17-T7N-R59W	MD Reference:	WELL @ 4954.5ft (RKB - 12.5')
Site:	Waves 3H Pad Sec.17-T7N-R59W	North Reference:	True
Well:	Waves 3H	Survey Calculation Method:	Minimum Curvature
Wellbore:	Wellbore #1		
Design:	Plan #1 (12-10-12)		

Planned Survey									
Measured Depth (ft)	Inclination (°)	Azimuth (°)	Vertical Depth (ft)	+N/-S (ft)	+E/-W (ft)	Vertical Section (ft)	Dogleg Rate (°/100ft)	Build Rate (°/100ft)	Turn Rate (°/100ft)
2,080.0	0.00	0.00	2,080.0	0.0	0.0	0.0	0.00	0.00	0.00
2,120.0	0.00	0.00	2,120.0	0.0	0.0	0.0	0.00	0.00	0.00
2,160.0	0.00	0.00	2,160.0	0.0	0.0	0.0	0.00	0.00	0.00
2,200.0	0.00	0.00	2,200.0	0.0	0.0	0.0	0.00	0.00	0.00
2,240.0	0.00	0.00	2,240.0	0.0	0.0	0.0	0.00	0.00	0.00
2,280.0	0.00	0.00	2,280.0	0.0	0.0	0.0	0.00	0.00	0.00
2,320.0	0.00	0.00	2,320.0	0.0	0.0	0.0	0.00	0.00	0.00
2,360.0	0.00	0.00	2,360.0	0.0	0.0	0.0	0.00	0.00	0.00
2,400.0	0.00	0.00	2,400.0	0.0	0.0	0.0	0.00	0.00	0.00
2,440.0	0.00	0.00	2,440.0	0.0	0.0	0.0	0.00	0.00	0.00
2,480.0	0.00	0.00	2,480.0	0.0	0.0	0.0	0.00	0.00	0.00
2,500.0	0.00	0.00	2,500.0	0.0	0.0	0.0	0.00	0.00	0.00
KOP #1									
2,520.0	0.40	234.04	2,520.0	0.0	-0.1	-0.1	2.00	2.00	0.00
2,560.0	1.20	234.04	2,560.0	-0.4	-0.5	-0.6	2.00	2.00	0.00
2,600.0	2.00	234.04	2,600.0	-1.0	-1.4	-1.7	2.00	2.00	0.00
2,640.0	2.80	234.04	2,639.9	-2.0	-2.8	-3.4	2.00	2.00	0.00
2,680.0	3.60	234.04	2,679.9	-3.3	-4.6	-5.6	2.00	2.00	0.00
2,720.0	4.40	234.04	2,719.8	-5.0	-6.8	-8.4	2.00	2.00	0.00
2,760.0	5.20	234.04	2,759.6	-6.9	-9.5	-11.7	2.00	2.00	0.00
2,799.7	5.99	234.04	2,799.2	-9.2	-12.7	-15.6	2.00	2.00	0.00
2,800.0	5.99	234.04	2,799.5	-9.2	-12.7	-15.6	0.00	0.00	0.00
2,840.0	5.99	234.04	2,839.2	-11.7	-16.1	-19.7	0.00	0.00	0.00
2,880.0	5.99	234.04	2,879.0	-14.1	-19.5	-23.9	0.00	0.00	0.00
2,920.0	5.99	234.04	2,918.8	-16.6	-22.8	-28.1	0.00	0.00	0.00
2,960.0	5.99	234.04	2,958.6	-19.0	-26.2	-32.2	0.00	0.00	0.00
3,000.0	5.99	234.04	2,998.4	-21.5	-29.6	-36.4	0.00	0.00	0.00
3,040.0	5.99	234.04	3,038.1	-23.9	-33.0	-40.5	0.00	0.00	0.00
3,080.0	5.99	234.04	3,077.9	-26.4	-36.4	-44.7	0.00	0.00	0.00
3,120.0	5.99	234.04	3,117.7	-28.8	-39.8	-48.8	0.00	0.00	0.00
3,160.0	5.99	234.04	3,157.5	-31.3	-43.1	-53.0	0.00	0.00	0.00
3,200.0	5.99	234.04	3,197.3	-33.7	-46.5	-57.1	0.00	0.00	0.00
3,240.0	5.99	234.04	3,237.0	-36.2	-49.9	-61.3	0.00	0.00	0.00
3,280.0	5.99	234.04	3,276.8	-38.7	-53.3	-65.4	0.00	0.00	0.00
3,320.0	5.99	234.04	3,316.6	-41.1	-56.7	-69.6	0.00	0.00	0.00
3,360.0	5.99	234.04	3,356.4	-43.6	-60.0	-73.7	0.00	0.00	0.00
3,400.0	5.99	234.04	3,396.2	-46.0	-63.4	-77.9	0.00	0.00	0.00
3,440.0	5.99	234.04	3,436.0	-48.5	-66.8	-82.0	0.00	0.00	0.00
3,480.0	5.99	234.04	3,475.7	-50.9	-70.2	-86.2	0.00	0.00	0.00
3,520.0	5.99	234.04	3,515.5	-53.4	-73.6	-90.3	0.00	0.00	0.00
3,560.0	5.99	234.04	3,555.3	-55.8	-77.0	-94.5	0.00	0.00	0.00
3,600.0	5.99	234.04	3,595.1	-58.3	-80.3	-98.6	0.00	0.00	0.00
3,640.0	5.99	234.04	3,634.9	-60.7	-83.7	-102.8	0.00	0.00	0.00
3,680.0	5.99	234.04	3,674.6	-63.2	-87.1	-106.9	0.00	0.00	0.00
3,706.3	5.99	234.04	3,700.8	-64.8	-89.3	-109.7	0.00	0.00	0.00
3,720.0	5.72	234.04	3,714.4	-65.6	-90.5	-111.1	2.00	-2.00	0.00
3,760.0	4.92	234.04	3,754.3	-67.8	-93.5	-114.7	2.00	-2.00	0.00
3,800.0	4.12	234.04	3,794.1	-69.7	-96.0	-117.9	2.00	-2.00	0.00
3,840.0	3.32	234.04	3,834.0	-71.2	-98.1	-120.5	2.00	-2.00	0.00
3,880.0	2.52	234.04	3,874.0	-72.4	-99.8	-122.5	2.00	-2.00	0.00
3,920.0	1.72	234.04	3,914.0	-73.2	-101.0	-123.9	2.00	-2.00	0.00
3,960.0	0.92	234.04	3,954.0	-73.8	-101.7	-124.9	2.00	-2.00	0.00
4,000.0	0.12	234.04	3,993.9	-74.0	-102.0	-125.2	2.00	-2.00	0.00

Database:	Landmark	Local Co-ordinate Reference:	Well Waves 3H
Company:	Condor Energy, Weld County, CO	TVD Reference:	WELL @ 4954.5ft (RKB - 12.5')
Project:	SEC.17-T7N-R59W	MD Reference:	WELL @ 4954.5ft (RKB - 12.5')
Site:	Waves 3H Pad Sec.17-T7N-R59W	North Reference:	True
Well:	Waves 3H	Survey Calculation Method:	Minimum Curvature
Wellbore:	Wellbore #1		
Design:	Plan #1 (12-10-12)		

Planned Survey									
Measured Depth (ft)	Inclination (°)	Azimuth (°)	Vertical Depth (ft)	+N/-S (ft)	+E/-W (ft)	Vertical Section (ft)	Dogleg Rate (°/100ft)	Build Rate (°/100ft)	Turn Rate (°/100ft)
4,006.1	0.00	0.00	4,000.0	-74.0	-102.0	-125.2	2.00	-2.00	0.00
4,040.0	0.00	0.00	4,033.9	-74.0	-102.0	-125.2	0.00	0.00	0.00
4,080.0	0.00	0.00	4,073.9	-74.0	-102.0	-125.2	0.00	0.00	0.00
4,120.0	0.00	0.00	4,113.9	-74.0	-102.0	-125.2	0.00	0.00	0.00
4,160.0	0.00	0.00	4,153.9	-74.0	-102.0	-125.2	0.00	0.00	0.00
4,200.0	0.00	0.00	4,193.9	-74.0	-102.0	-125.2	0.00	0.00	0.00
4,240.0	0.00	0.00	4,233.9	-74.0	-102.0	-125.2	0.00	0.00	0.00
4,280.0	0.00	0.00	4,273.9	-74.0	-102.0	-125.2	0.00	0.00	0.00
4,320.0	0.00	0.00	4,313.9	-74.0	-102.0	-125.2	0.00	0.00	0.00
4,360.0	0.00	0.00	4,353.9	-74.0	-102.0	-125.2	0.00	0.00	0.00
4,400.0	0.00	0.00	4,393.9	-74.0	-102.0	-125.2	0.00	0.00	0.00
4,440.0	0.00	0.00	4,433.9	-74.0	-102.0	-125.2	0.00	0.00	0.00
4,480.0	0.00	0.00	4,473.9	-74.0	-102.0	-125.2	0.00	0.00	0.00
4,520.0	0.00	0.00	4,513.9	-74.0	-102.0	-125.2	0.00	0.00	0.00
4,560.0	0.00	0.00	4,553.9	-74.0	-102.0	-125.2	0.00	0.00	0.00
4,600.0	0.00	0.00	4,593.9	-74.0	-102.0	-125.2	0.00	0.00	0.00
4,640.0	0.00	0.00	4,633.9	-74.0	-102.0	-125.2	0.00	0.00	0.00
4,680.0	0.00	0.00	4,673.9	-74.0	-102.0	-125.2	0.00	0.00	0.00
4,720.0	0.00	0.00	4,713.9	-74.0	-102.0	-125.2	0.00	0.00	0.00
4,760.0	0.00	0.00	4,753.9	-74.0	-102.0	-125.2	0.00	0.00	0.00
4,800.0	0.00	0.00	4,793.9	-74.0	-102.0	-125.2	0.00	0.00	0.00
4,840.0	0.00	0.00	4,833.9	-74.0	-102.0	-125.2	0.00	0.00	0.00
4,880.0	0.00	0.00	4,873.9	-74.0	-102.0	-125.2	0.00	0.00	0.00
4,920.0	0.00	0.00	4,913.9	-74.0	-102.0	-125.2	0.00	0.00	0.00
4,960.0	0.00	0.00	4,953.9	-74.0	-102.0	-125.2	0.00	0.00	0.00
5,000.0	0.00	0.00	4,993.9	-74.0	-102.0	-125.2	0.00	0.00	0.00
5,040.0	0.00	0.00	5,033.9	-74.0	-102.0	-125.2	0.00	0.00	0.00
5,080.0	0.00	0.00	5,073.9	-74.0	-102.0	-125.2	0.00	0.00	0.00
5,120.0	0.00	0.00	5,113.9	-74.0	-102.0	-125.2	0.00	0.00	0.00
5,160.0	0.00	0.00	5,153.9	-74.0	-102.0	-125.2	0.00	0.00	0.00
5,200.0	0.00	0.00	5,193.9	-74.0	-102.0	-125.2	0.00	0.00	0.00
5,240.0	0.00	0.00	5,233.9	-74.0	-102.0	-125.2	0.00	0.00	0.00
5,280.0	0.00	0.00	5,273.9	-74.0	-102.0	-125.2	0.00	0.00	0.00
5,320.0	0.00	0.00	5,313.9	-74.0	-102.0	-125.2	0.00	0.00	0.00
5,360.0	0.00	0.00	5,353.9	-74.0	-102.0	-125.2	0.00	0.00	0.00
5,400.0	0.00	0.00	5,393.9	-74.0	-102.0	-125.2	0.00	0.00	0.00
5,440.0	0.00	0.00	5,433.9	-74.0	-102.0	-125.2	0.00	0.00	0.00
5,462.4	0.00	0.00	5,456.3	-74.0	-102.0	-125.2	0.00	0.00	0.00
KOP #2									
5,480.0	1.41	47.82	5,473.9	-73.9	-101.8	-125.0	8.02	8.02	0.00
5,520.0	4.61	47.82	5,513.9	-72.4	-100.3	-122.9	8.00	8.00	0.00
5,560.0	7.81	47.82	5,553.6	-69.5	-97.1	-118.6	8.00	8.00	0.00
5,600.0	11.01	47.82	5,593.1	-65.1	-92.2	-112.0	8.00	8.00	0.00
5,640.0	14.21	47.82	5,632.1	-59.3	-85.8	-103.3	8.00	8.00	0.00
5,680.0	17.41	47.82	5,670.6	-52.0	-77.7	-92.4	8.00	8.00	0.00
5,720.0	20.61	47.82	5,708.4	-43.2	-68.0	-79.4	8.00	8.00	0.00
5,760.0	23.81	47.82	5,745.5	-33.1	-56.8	-64.3	8.00	8.00	0.00
5,800.0	27.01	47.82	5,781.6	-21.5	-44.1	-47.1	8.00	8.00	0.00
5,840.0	30.21	47.82	5,816.7	-8.7	-29.9	-28.0	8.00	8.00	0.00
5,880.0	33.41	47.82	5,850.7	5.5	-14.3	-6.9	8.00	8.00	0.00
5,920.0	36.61	47.82	5,883.4	20.9	2.7	16.1	8.00	8.00	0.00
5,960.0	39.81	47.82	5,914.9	37.5	21.0	40.8	8.00	8.00	0.00
6,000.0	43.01	47.82	5,944.9	55.3	40.6	67.3	8.00	8.00	0.00
6,040.0	46.21	47.82	5,973.3	74.1	61.5	95.4	8.00	8.00	0.00

Database:	Landmark	Local Co-ordinate Reference:	Well Waves 3H
Company:	Condor Energy, Weld County, CO	TVD Reference:	WELL @ 4954.5ft (RKB - 12.5')
Project:	SEC.17-T7N-R59W	MD Reference:	WELL @ 4954.5ft (RKB - 12.5')
Site:	Waves 3H Pad Sec.17-T7N-R59W	North Reference:	True
Well:	Waves 3H	Survey Calculation Method:	Minimum Curvature
Wellbore:	Wellbore #1		
Design:	Plan #1 (12-10-12)		

Planned Survey									
Measured Depth (ft)	Inclination (°)	Azimuth (°)	Vertical Depth (ft)	+N/-S (ft)	+E/-W (ft)	Vertical Section (ft)	Dogleg Rate (°/100ft)	Build Rate (°/100ft)	Turn Rate (°/100ft)
6,080.0	49.41	47.82	6,000.2	94.0	83.4	125.0	8.00	8.00	0.00
6,120.0	52.61	47.82	6,025.4	114.9	106.5	156.1	8.00	8.00	0.00
6,160.0	55.81	47.82	6,048.7	136.7	130.5	188.5	8.00	8.00	0.00
6,200.0	59.01	47.82	6,070.3	159.3	155.5	222.2	8.00	8.00	0.00
6,240.0	62.21	47.82	6,089.9	182.7	181.3	257.1	8.00	8.00	0.00
6,280.0	65.41	47.82	6,107.6	206.8	207.9	292.9	8.00	8.00	0.00
6,320.0	68.61	47.82	6,123.2	231.5	235.2	329.8	8.00	8.00	0.00
6,360.0	71.81	47.82	6,136.7	256.8	263.0	367.4	8.00	8.00	0.00
6,400.0	75.01	47.82	6,148.1	282.5	291.5	405.7	8.00	8.00	0.00
6,440.0	78.21	47.82	6,157.4	308.7	320.3	444.6	8.00	8.00	0.00
6,480.0	81.41	47.82	6,164.5	335.1	349.5	484.0	8.00	8.00	0.00
6,520.0	84.61	47.82	6,169.3	361.8	378.9	523.7	8.00	8.00	0.00
6,525.3	85.03	47.82	6,169.8	365.3	382.8	529.0	8.00	8.00	0.00
T1 615'FSL & 1990'FEL									
6,560.0	87.81	47.82	6,172.0	388.6	408.4	563.6	8.00	8.00	0.00
6,589.9	90.20	47.82	6,172.5	408.6	430.6	593.5	7.99	7.99	0.00
End of Build									
6,590.5	90.20	47.82	6,172.5	409.0	431.0	594.1	0.00	0.00	0.00
7"									
6,600.0	90.39	47.80	6,172.5	415.4	438.1	603.6	2.01	2.00	-0.17
6,604.6	90.48	47.79	6,172.4	418.5	441.5	608.2	2.00	1.99	-0.17
6,640.0	90.48	47.79	6,172.1	442.3	467.7	643.6	0.00	0.00	0.00
6,680.0	90.48	47.79	6,171.8	469.2	497.3	683.6	0.00	0.00	0.00
6,720.0	90.48	47.79	6,171.4	496.0	527.0	723.6	0.00	0.00	0.00
6,760.0	90.48	47.79	6,171.1	522.9	556.6	763.6	0.00	0.00	0.00
6,800.0	90.48	47.79	6,170.8	549.8	586.2	803.6	0.00	0.00	0.00
6,840.0	90.48	47.79	6,170.4	576.6	615.8	843.6	0.00	0.00	0.00
6,880.0	90.48	47.79	6,170.1	603.5	645.5	883.6	0.00	0.00	0.00
6,920.0	90.48	47.79	6,169.8	630.4	675.1	923.6	0.00	0.00	0.00
6,960.0	90.48	47.79	6,169.4	657.3	704.7	963.6	0.00	0.00	0.00
7,000.0	90.48	47.79	6,169.1	684.1	734.4	1,003.6	0.00	0.00	0.00
7,040.0	90.48	47.79	6,168.8	711.0	764.0	1,043.6	0.00	0.00	0.00
7,080.0	90.48	47.79	6,168.4	737.9	793.6	1,083.6	0.00	0.00	0.00
7,120.0	90.48	47.79	6,168.1	764.7	823.2	1,123.6	0.00	0.00	0.00
7,160.0	90.48	47.79	6,167.8	791.6	852.9	1,163.6	0.00	0.00	0.00
7,200.0	90.48	47.79	6,167.4	818.5	882.5	1,203.6	0.00	0.00	0.00
7,240.0	90.48	47.79	6,167.1	845.4	912.1	1,243.6	0.00	0.00	0.00
7,280.0	90.48	47.79	6,166.7	872.2	941.7	1,283.6	0.00	0.00	0.00
7,320.0	90.48	47.79	6,166.4	899.1	971.4	1,323.6	0.00	0.00	0.00
7,360.0	90.48	47.79	6,166.1	926.0	1,001.0	1,363.6	0.00	0.00	0.00
7,400.0	90.48	47.79	6,165.7	952.8	1,030.6	1,403.6	0.00	0.00	0.00
7,440.0	90.48	47.79	6,165.4	979.7	1,060.3	1,443.6	0.00	0.00	0.00
7,480.0	90.48	47.79	6,165.1	1,006.6	1,089.9	1,483.6	0.00	0.00	0.00
7,520.0	90.48	47.79	6,164.7	1,033.5	1,119.5	1,523.6	0.00	0.00	0.00
7,560.0	90.48	47.79	6,164.4	1,060.3	1,149.1	1,563.6	0.00	0.00	0.00
7,600.0	90.48	47.79	6,164.1	1,087.2	1,178.8	1,603.6	0.00	0.00	0.00
7,640.0	90.48	47.79	6,163.7	1,114.1	1,208.4	1,643.6	0.00	0.00	0.00
7,680.0	90.48	47.79	6,163.4	1,140.9	1,238.0	1,683.6	0.00	0.00	0.00
7,720.0	90.48	47.79	6,163.0	1,167.8	1,267.7	1,723.6	0.00	0.00	0.00
7,760.0	90.48	47.79	6,162.7	1,194.7	1,297.3	1,763.6	0.00	0.00	0.00
7,800.0	90.48	47.79	6,162.4	1,221.6	1,326.9	1,803.6	0.00	0.00	0.00
7,840.0	90.48	47.79	6,162.0	1,248.4	1,356.5	1,843.6	0.00	0.00	0.00
7,880.0	90.48	47.79	6,161.7	1,275.3	1,386.2	1,883.6	0.00	0.00	0.00

Database:	Landmark	Local Co-ordinate Reference:	Well Waves 3H
Company:	Condor Energy, Weld County, CO	TVD Reference:	WELL @ 4954.5ft (RKB - 12.5')
Project:	SEC.17-T7N-R59W	MD Reference:	WELL @ 4954.5ft (RKB - 12.5')
Site:	Waves 3H Pad Sec.17-T7N-R59W	North Reference:	True
Well:	Waves 3H	Survey Calculation Method:	Minimum Curvature
Wellbore:	Wellbore #1		
Design:	Plan #1 (12-10-12)		

Planned Survey									
Measured Depth (ft)	Inclination (°)	Azimuth (°)	Vertical Depth (ft)	+N/-S (ft)	+E/-W (ft)	Vertical Section (ft)	Dogleg Rate (°/100ft)	Build Rate (°/100ft)	Turn Rate (°/100ft)
7,920.0	90.48	47.79	6,161.4	1,302.2	1,415.8	1,923.5	0.00	0.00	0.00
7,960.0	90.48	47.79	6,161.0	1,329.0	1,445.4	1,963.5	0.00	0.00	0.00
8,000.0	90.48	47.79	6,160.7	1,355.9	1,475.1	2,003.5	0.00	0.00	0.00
8,040.0	90.48	47.79	6,160.4	1,382.8	1,504.7	2,043.5	0.00	0.00	0.00
8,080.0	90.48	47.79	6,160.0	1,409.7	1,534.3	2,083.5	0.00	0.00	0.00
8,120.0	90.48	47.79	6,159.7	1,436.5	1,563.9	2,123.5	0.00	0.00	0.00
8,160.0	90.48	47.79	6,159.4	1,463.4	1,593.6	2,163.5	0.00	0.00	0.00
8,200.0	90.48	47.79	6,159.0	1,490.3	1,623.2	2,203.5	0.00	0.00	0.00
8,240.0	90.48	47.79	6,158.7	1,517.1	1,652.8	2,243.5	0.00	0.00	0.00
8,280.0	90.48	47.79	6,158.3	1,544.0	1,682.4	2,283.5	0.00	0.00	0.00
8,320.0	90.48	47.79	6,158.0	1,570.9	1,712.1	2,323.5	0.00	0.00	0.00
8,360.0	90.48	47.79	6,157.7	1,597.8	1,741.7	2,363.5	0.00	0.00	0.00
8,400.0	90.48	47.79	6,157.3	1,624.6	1,771.3	2,403.5	0.00	0.00	0.00
8,440.0	90.48	47.79	6,157.0	1,651.5	1,801.0	2,443.5	0.00	0.00	0.00
8,480.0	90.48	47.79	6,156.7	1,678.4	1,830.6	2,483.5	0.00	0.00	0.00
8,520.0	90.48	47.79	6,156.3	1,705.2	1,860.2	2,523.5	0.00	0.00	0.00
8,560.0	90.48	47.79	6,156.0	1,732.1	1,889.8	2,563.5	0.00	0.00	0.00
8,600.0	90.48	47.79	6,155.7	1,759.0	1,919.5	2,603.5	0.00	0.00	0.00
8,640.0	90.48	47.79	6,155.3	1,785.9	1,949.1	2,643.5	0.00	0.00	0.00
8,680.0	90.48	47.79	6,155.0	1,812.7	1,978.7	2,683.5	0.00	0.00	0.00
8,720.0	90.48	47.79	6,154.6	1,839.6	2,008.4	2,723.5	0.00	0.00	0.00
8,760.0	90.48	47.79	6,154.3	1,866.5	2,038.0	2,763.5	0.00	0.00	0.00
8,800.0	90.48	47.79	6,154.0	1,893.3	2,067.6	2,803.5	0.00	0.00	0.00
8,840.0	90.48	47.79	6,153.6	1,920.2	2,097.2	2,843.5	0.00	0.00	0.00
8,880.0	90.48	47.79	6,153.3	1,947.1	2,126.9	2,883.5	0.00	0.00	0.00
8,920.0	90.48	47.79	6,153.0	1,974.0	2,156.5	2,923.5	0.00	0.00	0.00
8,960.0	90.48	47.79	6,152.6	2,000.8	2,186.1	2,963.5	0.00	0.00	0.00
9,000.0	90.48	47.79	6,152.3	2,027.7	2,215.8	3,003.5	0.00	0.00	0.00
9,040.0	90.48	47.79	6,152.0	2,054.6	2,245.4	3,043.5	0.00	0.00	0.00
9,080.0	90.48	47.79	6,151.6	2,081.4	2,275.0	3,083.5	0.00	0.00	0.00
9,120.0	90.48	47.79	6,151.3	2,108.3	2,304.6	3,123.5	0.00	0.00	0.00
9,160.0	90.48	47.79	6,150.9	2,135.2	2,334.3	3,163.5	0.00	0.00	0.00
9,200.0	90.48	47.79	6,150.6	2,162.1	2,363.9	3,203.5	0.00	0.00	0.00
9,240.0	90.48	47.79	6,150.3	2,188.9	2,393.5	3,243.5	0.00	0.00	0.00
9,280.0	90.48	47.79	6,149.9	2,215.8	2,423.1	3,283.5	0.00	0.00	0.00
9,320.0	90.48	47.79	6,149.6	2,242.7	2,452.8	3,323.5	0.00	0.00	0.00
9,360.0	90.48	47.79	6,149.3	2,269.5	2,482.4	3,363.5	0.00	0.00	0.00
9,400.0	90.48	47.79	6,148.9	2,296.4	2,512.0	3,403.5	0.00	0.00	0.00
9,440.0	90.48	47.79	6,148.6	2,323.3	2,541.7	3,443.5	0.00	0.00	0.00
9,480.0	90.48	47.79	6,148.3	2,350.2	2,571.3	3,483.5	0.00	0.00	0.00
9,520.0	90.48	47.79	6,147.9	2,377.0	2,600.9	3,523.5	0.00	0.00	0.00
9,560.0	90.48	47.79	6,147.6	2,403.9	2,630.5	3,563.5	0.00	0.00	0.00
9,600.0	90.48	47.79	6,147.3	2,430.8	2,660.2	3,603.5	0.00	0.00	0.00
9,640.0	90.48	47.79	6,146.9	2,457.6	2,689.8	3,643.5	0.00	0.00	0.00
9,680.0	90.48	47.79	6,146.6	2,484.5	2,719.4	3,683.5	0.00	0.00	0.00
9,720.0	90.48	47.79	6,146.2	2,511.4	2,749.1	3,723.5	0.00	0.00	0.00
9,760.0	90.48	47.79	6,145.9	2,538.3	2,778.7	3,763.5	0.00	0.00	0.00
9,800.0	90.48	47.79	6,145.6	2,565.1	2,808.3	3,803.5	0.00	0.00	0.00
9,840.0	90.48	47.79	6,145.2	2,592.0	2,837.9	3,843.5	0.00	0.00	0.00
9,880.0	90.48	47.79	6,144.9	2,618.9	2,867.6	3,883.5	0.00	0.00	0.00
9,920.0	90.48	47.79	6,144.6	2,645.7	2,897.2	3,923.5	0.00	0.00	0.00
9,927.8	90.48	47.79	6,144.5	2,651.0	2,903.0	3,931.3	0.00	0.00	0.00
WP1									

Database:	Landmark	Local Co-ordinate Reference:	Well Waves 3H
Company:	Condor Energy, Weld County, CO	TVD Reference:	WELL @ 4954.5ft (RKB - 12.5')
Project:	SEC.17-T7N-R59W	MD Reference:	WELL @ 4954.5ft (RKB - 12.5')
Site:	Waves 3H Pad Sec.17-T7N-R59W	North Reference:	True
Well:	Waves 3H	Survey Calculation Method:	Minimum Curvature
Wellbore:	Wellbore #1		
Design:	Plan #1 (12-10-12)		

Planned Survey									
Measured Depth (ft)	Inclination (°)	Azimuth (°)	Vertical Depth (ft)	+N/-S (ft)	+E/-W (ft)	Vertical Section (ft)	Dogleg Rate (°/100ft)	Build Rate (°/100ft)	Turn Rate (°/100ft)
9,946.5	90.11	47.74	6,144.4	2,663.5	2,916.8	3,949.9	2.00	-1.98	-0.28
9,960.0	90.11	47.74	6,144.4	2,672.6	2,926.8	3,963.5	0.00	0.00	0.00
10,000.0	90.11	47.74	6,144.3	2,699.5	2,956.4	4,003.5	0.00	0.00	0.00
10,040.0	90.11	47.74	6,144.2	2,726.4	2,986.0	4,043.5	0.00	0.00	0.00
10,080.0	90.11	47.74	6,144.1	2,753.3	3,015.6	4,083.5	0.00	0.00	0.00
10,120.0	90.11	47.74	6,144.1	2,780.2	3,045.2	4,123.5	0.00	0.00	0.00
10,160.0	90.11	47.74	6,144.0	2,807.1	3,074.8	4,163.5	0.00	0.00	0.00
10,200.0	90.11	47.74	6,143.9	2,834.0	3,104.4	4,203.5	0.00	0.00	0.00
10,240.0	90.11	47.74	6,143.8	2,860.9	3,134.0	4,243.5	0.00	0.00	0.00
10,280.0	90.11	47.74	6,143.8	2,887.8	3,163.6	4,283.5	0.00	0.00	0.00
10,320.0	90.11	47.74	6,143.7	2,914.7	3,193.3	4,323.5	0.00	0.00	0.00
10,360.0	90.11	47.74	6,143.6	2,941.6	3,222.9	4,363.5	0.00	0.00	0.00
10,400.0	90.11	47.74	6,143.5	2,968.5	3,252.5	4,403.5	0.00	0.00	0.00
10,440.0	90.11	47.74	6,143.4	2,995.4	3,282.1	4,443.5	0.00	0.00	0.00
10,480.0	90.11	47.74	6,143.4	3,022.3	3,311.7	4,483.5	0.00	0.00	0.00
10,520.0	90.11	47.74	6,143.3	3,049.2	3,341.3	4,523.5	0.00	0.00	0.00
10,560.0	90.11	47.74	6,143.2	3,076.1	3,370.9	4,563.5	0.00	0.00	0.00
10,600.0	90.11	47.74	6,143.1	3,103.0	3,400.5	4,603.5	0.00	0.00	0.00
10,640.0	90.11	47.74	6,143.0	3,129.9	3,430.1	4,643.5	0.00	0.00	0.00
10,680.0	90.11	47.74	6,143.0	3,156.8	3,459.7	4,683.5	0.00	0.00	0.00
10,720.0	90.11	47.74	6,142.9	3,183.7	3,489.3	4,723.5	0.00	0.00	0.00
10,760.0	90.11	47.74	6,142.8	3,210.6	3,518.9	4,763.5	0.00	0.00	0.00
10,800.0	90.11	47.74	6,142.7	3,237.5	3,548.5	4,803.5	0.00	0.00	0.00
10,840.0	90.11	47.74	6,142.7	3,264.4	3,578.1	4,843.5	0.00	0.00	0.00
10,880.0	90.11	47.74	6,142.6	3,291.3	3,607.7	4,883.5	0.00	0.00	0.00
10,920.0	90.11	47.74	6,142.5	3,318.2	3,637.3	4,923.5	0.00	0.00	0.00
10,960.0	90.11	47.74	6,142.4	3,345.1	3,666.9	4,963.5	0.00	0.00	0.00
11,000.0	90.11	47.74	6,142.3	3,372.0	3,696.5	5,003.5	0.00	0.00	0.00
11,040.0	90.11	47.74	6,142.3	3,398.9	3,726.1	5,043.5	0.00	0.00	0.00
11,080.0	90.11	47.74	6,142.2	3,425.8	3,755.7	5,083.5	0.00	0.00	0.00
11,120.0	90.11	47.74	6,142.1	3,452.7	3,785.3	5,123.5	0.00	0.00	0.00
11,160.0	90.11	47.74	6,142.0	3,479.6	3,815.0	5,163.5	0.00	0.00	0.00
11,200.0	90.11	47.74	6,141.9	3,506.5	3,844.6	5,203.5	0.00	0.00	0.00
11,240.0	90.11	47.74	6,141.9	3,533.4	3,874.2	5,243.5	0.00	0.00	0.00
11,280.0	90.11	47.74	6,141.8	3,560.3	3,903.8	5,283.5	0.00	0.00	0.00
11,320.0	90.11	47.74	6,141.7	3,587.2	3,933.4	5,323.5	0.00	0.00	0.00
11,360.0	90.11	47.74	6,141.6	3,614.1	3,963.0	5,363.5	0.00	0.00	0.00
11,400.0	90.11	47.74	6,141.6	3,641.0	3,992.6	5,403.5	0.00	0.00	0.00
11,440.0	90.11	47.74	6,141.5	3,667.9	4,022.2	5,443.5	0.00	0.00	0.00
11,480.0	90.11	47.74	6,141.4	3,694.8	4,051.8	5,483.5	0.00	0.00	0.00
11,520.0	90.11	47.74	6,141.3	3,721.7	4,081.4	5,523.5	0.00	0.00	0.00
11,560.0	90.11	47.74	6,141.2	3,748.6	4,111.0	5,563.5	0.00	0.00	0.00
11,600.0	90.11	47.74	6,141.2	3,775.5	4,140.6	5,603.5	0.00	0.00	0.00
11,640.0	90.11	47.74	6,141.1	3,802.4	4,170.2	5,643.5	0.00	0.00	0.00
11,680.0	90.11	47.74	6,141.0	3,829.3	4,199.8	5,683.5	0.00	0.00	0.00
11,720.0	90.11	47.74	6,140.9	3,856.2	4,229.4	5,723.5	0.00	0.00	0.00
11,760.0	90.11	47.74	6,140.9	3,883.1	4,259.0	5,763.5	0.00	0.00	0.00
11,800.0	90.11	47.74	6,140.8	3,910.0	4,288.6	5,803.5	0.00	0.00	0.00
11,840.0	90.11	47.74	6,140.7	3,936.9	4,318.2	5,843.5	0.00	0.00	0.00
11,880.0	90.11	47.74	6,140.6	3,963.8	4,347.8	5,883.5	0.00	0.00	0.00
11,920.0	90.11	47.74	6,140.5	3,990.7	4,377.4	5,923.5	0.00	0.00	0.00
11,960.0	90.11	47.74	6,140.5	4,017.6	4,407.0	5,963.5	0.00	0.00	0.00
12,000.0	90.11	47.74	6,140.4	4,044.5	4,436.6	6,003.5	0.00	0.00	0.00
12,040.0	90.11	47.74	6,140.3	4,071.4	4,466.3	6,043.5	0.00	0.00	0.00

Database:	Landmark	Local Co-ordinate Reference:	Well Waves 3H
Company:	Condor Energy, Weld County, CO	TVD Reference:	WELL @ 4954.5ft (RKB - 12.5')
Project:	SEC.17-T7N-R59W	MD Reference:	WELL @ 4954.5ft (RKB - 12.5')
Site:	Waves 3H Pad Sec.17-T7N-R59W	North Reference:	True
Well:	Waves 3H	Survey Calculation Method:	Minimum Curvature
Wellbore:	Wellbore #1		
Design:	Plan #1 (12-10-12)		

Planned Survey										
Measured Depth (ft)	Inclination (°)	Azimuth (°)	Vertical Depth (ft)	+N/-S (ft)	+E/-W (ft)	Vertical Section (ft)	Dogleg Rate (°/100ft)	Build Rate (°/100ft)	Turn Rate (°/100ft)	
12,080.0	90.11	47.74	6,140.2	4,098.3	4,495.9	6,083.5	0.00	0.00	0.00	
12,120.0	90.11	47.74	6,140.1	4,125.2	4,525.5	6,123.5	0.00	0.00	0.00	
12,160.0	90.11	47.74	6,140.1	4,152.1	4,555.1	6,163.5	0.00	0.00	0.00	
12,200.0	90.11	47.74	6,140.0	4,179.0	4,584.7	6,203.5	0.00	0.00	0.00	
12,240.0	90.11	47.74	6,139.9	4,205.9	4,614.3	6,243.5	0.00	0.00	0.00	
12,280.0	90.11	47.74	6,139.8	4,232.8	4,643.9	6,283.5	0.00	0.00	0.00	
12,320.0	90.11	47.74	6,139.8	4,259.7	4,673.5	6,323.5	0.00	0.00	0.00	
12,360.0	90.11	47.74	6,139.7	4,286.6	4,703.1	6,363.5	0.00	0.00	0.00	
12,400.0	90.11	47.74	6,139.6	4,313.5	4,732.7	6,403.5	0.00	0.00	0.00	
12,440.0	90.11	47.74	6,139.5	4,340.4	4,762.3	6,443.5	0.00	0.00	0.00	
12,449.6	90.11	47.74	6,139.5	4,346.8	4,769.4	6,453.1	0.00	0.00	0.00	
HARDLINE BHL 600' - BHL 660'FNL & 2340'FWL, SEC.16										

Targets										
Target Name	Dip Angle (°)	Dip Dir. (°)	TVD (ft)	+N/-S (ft)	+E/-W (ft)	Northing (ft)	Easting (ft)	Latitude	Longitude	
HARDLINE BHL 600'	0.00	0.00	1.0	4,406.8	4,969.4	1,457,945.42	3,421,159.82	40.580574	-103.983700	
- plan misses target center by 6142.0ft at 12449.6ft MD (6139.5 TVD, 4346.8 N, 4769.4 E)										
- Polygon										
Point 1			1.0	0.0	0.0	1,457,945.42	3,421,159.82			
Point 2			1.0	0.0	-500.0	1,457,936.97	3,420,659.91			
HARDLINE SHL 600'	0.00	0.00	1.0	354.0	-250.0	1,453,805.13	3,416,009.80	40.569452	-104.002490	
- plan misses target center by 433.4ft at 1.0ft MD (1.0 TVD, 0.0 N, 0.0 E)										
- Polygon										
Point 1			1.0	0.0	0.0	1,453,805.13	3,416,009.80			
Point 2			1.0	0.0	800.0	1,453,818.65	3,416,809.66			
WP1	0.00	0.00	6,144.5	2,651.0	2,903.0	1,456,155.01	3,419,123.45	40.575756	-103.991140	
- plan hits target center										
- Point										
SHL 246'FSL & 2368'I	0.00	0.00	1.0	0.0	0.0	1,453,455.42	3,416,265.74	40.568480	-104.001590	
- plan hits target center										
- Point										
BHL 660'FNL & 2340'	0.00	0.00	6,139.5	4,346.8	4,769.4	1,457,882.10	3,420,960.91	40.580410	-103.984420	
- plan hits target center										
- Point										
SECTIONLINE 246'S	0.00	0.00	1.0	-246.0	-250.0	1,453,205.23	3,416,019.94	40.567805	-104.002490	
- plan misses target center by 350.7ft at 1.0ft MD (1.0 TVD, 0.0 N, 0.0 E)										
- Polygon										
Point 1			1.0	0.0	0.0	1,453,205.23	3,416,019.94			
Point 2			1.0	0.0	600.0	1,453,215.37	3,416,619.84			
T1 615'FSL & 1990'FE	0.00	0.00	6,172.5	364.3	383.4	1,453,826.16	3,416,642.91	40.569480	-104.000210	
- plan misses target center by 2.9ft at 6525.3ft MD (6169.8 TVD, 365.3 N, 382.8 E)										
- Point										

Database:	Landmark	Local Co-ordinate Reference:	Well Waves 3H
Company:	Condor Energy, Weld County, CO	TVD Reference:	WELL @ 4954.5ft (RKB - 12.5')
Project:	SEC.17-T7N-R59W	MD Reference:	WELL @ 4954.5ft (RKB - 12.5')
Site:	Waves 3H Pad Sec.17-T7N-R59W	North Reference:	True
Well:	Waves 3H	Survey Calculation Method:	Minimum Curvature
Wellbore:	Wellbore #1		
Design:	Plan #1 (12-10-12)		

Casing Points					
Measured Depth (ft)	Vertical Depth (ft)	Name		Casing Diameter (")	Hole Diameter (")
6,590.5	6,172.5	7"		7	7-1/2

Plan Annotations					
Measured Depth (ft)	Vertical Depth (ft)	Local Coordinates		Comment	
		+N/-S (ft)	+E/-W (ft)		
2,500.0	2,500.0	0.0	0.0	KOP #1	
5,462.4	5,456.3	-74.0	-102.0	KOP #2	
6,589.9	6,172.5	408.6	430.6	End of Build	