

**State of Colorado #C-1**

SESWSE Section 7

T1N R57W

330 FSL x 1650 FEL

API No. 05-087-05341

**ELEVATION DATA**

GL: 4494

DF: 4502

KB: 4504

**SURFACE CASING**

Hole size: Unknown

Csg size: 9 5/8

Weight: 25.4#

Depth: 215'

Cement top: Unknown

Cement: 160 sacks

**FORMATION TOPS**

Niobrara

Carlile

Greenhorn

D Sand 5479

J Sand 5549

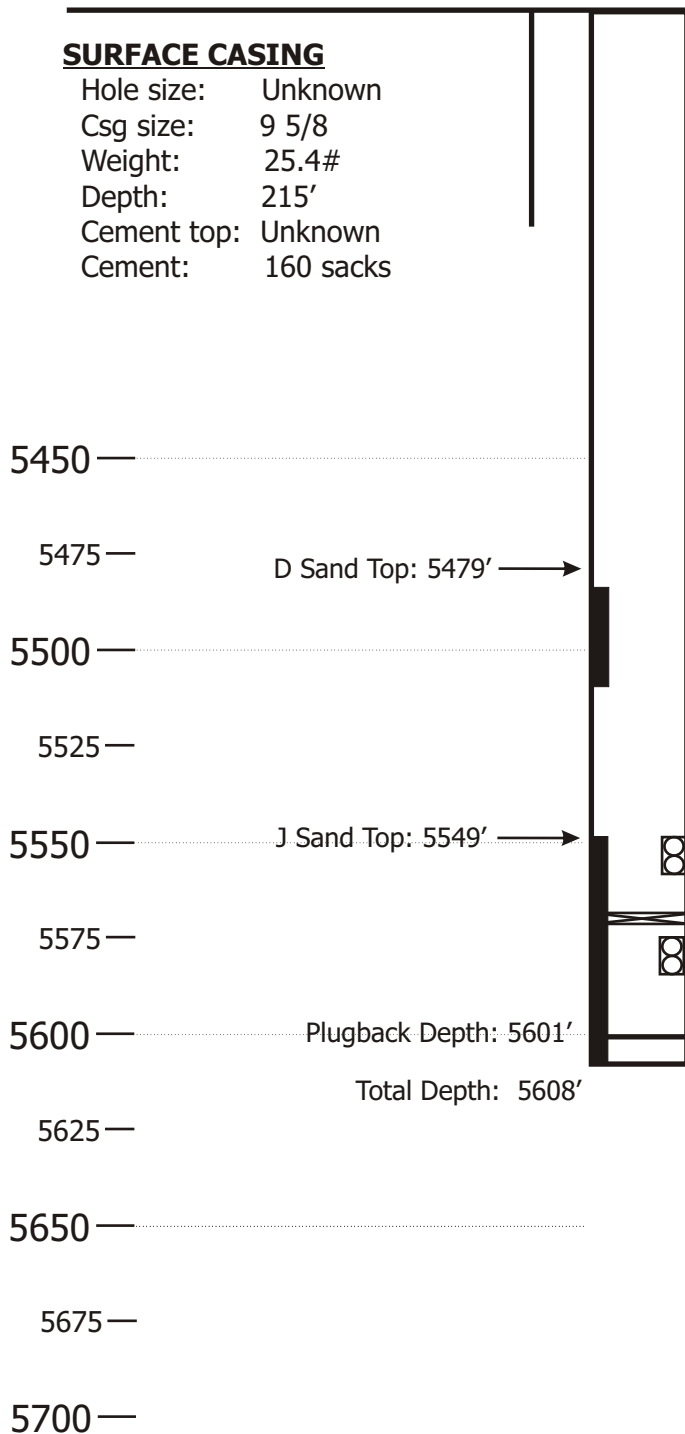
**CORES**

Core 1: 5484 to 5510

Core 2: 5549 to 5608

**PERFORATION HISTORY**

Date	Top	Btm	Status
4/25/94	5575	5585	Below CIBP
1/27/12	5548	5558	Active

**PRODUCTION TUBULARS AND PUMP**

	Size	Wt	Depth
Tubing	None		
Rods	None		
Anchor	None		
Pump	None		

**PRODUCTION CASING**

Hole size: 7 7/8

Csg size: 5 1/2

Weight: 15.5#

Depth: 5608'

Cement top: 4600'

Cement: 150 Sacks