

**SYNERGY RESOURCES CORPORATION
20203 HIGHWAY 60
PLATTEVILLE, Colorado**

SRC Pratt 2KD

Ensign 226

Post Job Summary **Cement Production Casing**

Date Prepared: 12/19/2012
Version: 1

Service Supervisor: CLEMONS, WILLIAM

Submitted by: KENNEDY, HERRON

HALLIBURTON

Wellbore Geometry

Job Tubulars					MD		Shoe Joint Length ft
Type	Description	Size in	ID in	Wt lbm/ft	Top ft	Bottom ft	
Casing	Production Casing	4.50	4.000	11.60	0.00	7,789.00	18.00
Open Hole Section	Open Hole		7.875		6.50	7,800.00	
Casing	Surface Casing	8.63	8.097	24.00	0.00	606.00	

HALLIBURTON

Pumping Schedule

Stage /Plug #	Fluid #	Fluid Type	Fluid Name	Surface Density lbm/gal	Surface Volume	Downhole Volume
1	1	Spacer	MUD FLUSH III	8.40	24.0 bbl	24.0 bbl
1	2	Cement Slurry	EXTENDACEM B1	11.50	475.0 sacks	475.0 sacks
1	3	Cement Slurry	FracCem B2	13.50	245.0 sacks	245.0 sacks

Fluids Pumped

Stage/Plug # 1 Fluid 1: MUD FLUSH III
MUD FLUSH III - SBM (528788)

Fluid Density: 8.40 lbm/gal
Fluid Volume: 24.00 bbl

Stage/Plug # 1 Fluid 2: EXTENDACEM B1
EXTENDACEM (TM) SYSTEM

Fluid Weight: 11.50 lbm/gal
Slurry Yield: 2.30 ft³/sack
Total Mixing Fluid: 12.93 Gal
Surface Volume: 475.0 sacks
Sacks: 475.0 sacks
Calculated Fill: 5,300.00 ft
Calculated Top of Fluid: 1,600.00 ft

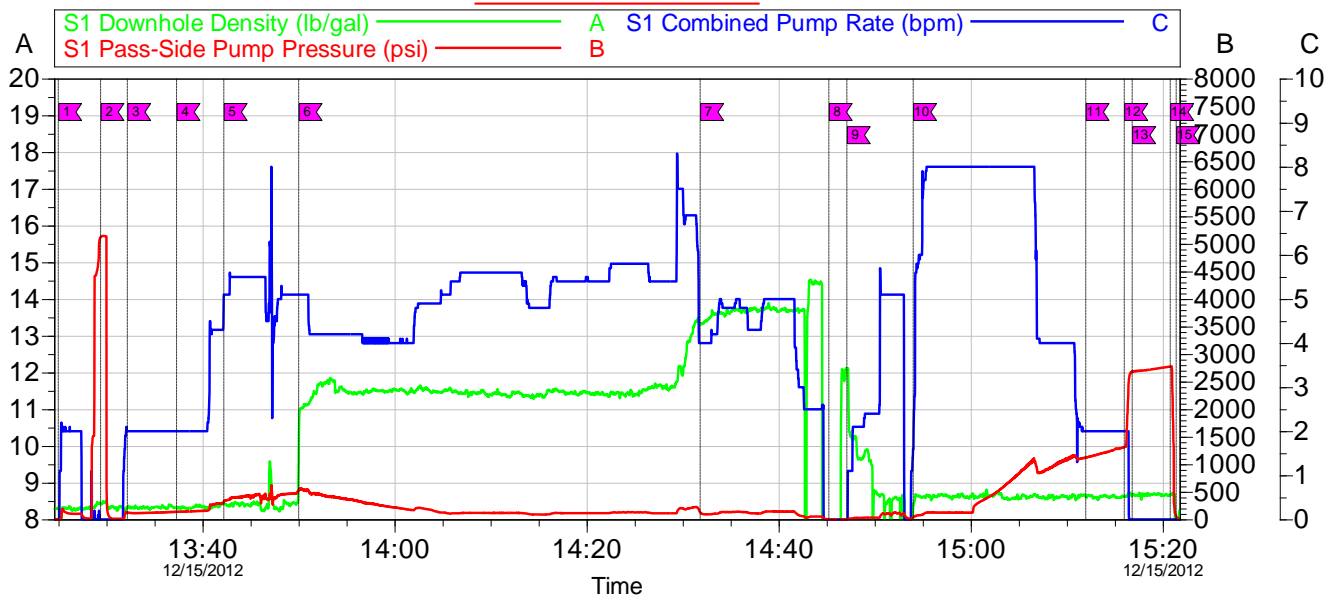
Stage/Plug # 1 Fluid 3: FracCem B2
FRACCCEM (TM) SYSTEM

Fluid Weight: 13.50 lbm/gal
Slurry Yield: 1.74 ft³/sack
Total Mixing Fluid: 8.30 Gal
Surface Volume: 245.0 sacks
Sacks: 245.0 sacks
Calculated Fill: 1,000.00 ft
Calculated Top of Fluid: 6,900.00 ft

HALLIBURTON

Data Acquisition

SYNERGY SRC PRATT 2KD PRODUCTION



Local Event Log											
Intersection				Intersection							
		SDD	SPPP	SCPR			SDD	SPPP	SCPR		
1	START JOB / FILL LINES	13:24:58	8.300	3.000	0.000	2	PRESSURE TEST	13:29:22	8.432	5121	0.000
3	H2O	13:32:10	8.330	120.0	2.000	4	MUD FLUSH	13:37:17	8.326	138.7	2.000
5	H2O	13:42:12	8.430	317.0	5.035	6	LEAD CEMENT	13:50:00	9.454	525.3	5.100
7	TAIL CEMENT	14:31:49	13.34	127.0	4.000	8	SHUTDOWN	14:45:13	0.610	1.000	0.000
9	WASH PUMPS & LINES/DROP TOP PLUG	14:47:06	12.09	4.000	0.000	10	DISPLACE H2O	14:54:00	8.322	42.44	1.600
11	SLOW RATE	15:11:58	8.630	1125	2.000	12	BUMP PLUG	15:15:59	8.632	1315	2.000
13	SHUTDOWN / HOLD PRESSURE	15:16:48	8.690	2686	0.000	14	CHECK FLOATS	15:20:46	8.670	2775	0.000
15	END JOB	15:21:23	2.922	55.98	0.000						

Customer:
Well Description:

Job Date: 15-Dec-2012
JOB TYPE:

Sales Order #: 900076705
SUPERVISOR:

OptiCem v6.4.21
15-Dec-12 15:41

HALLIBURTON

Service Supervisor Reports

Job Log

Date/Time	Chart #	Activity Code	Pump Rate	Cum Vol	Pump		Pressure (psig)	Comments
12/15/2012 13:24	1	Start Job	2	4			20.0	FILLED LINES
12/15/2012 13:29	2	Pressure Test					5121.0	PRESSURE TEST 5000 PER CoMan
12/15/2012 13:32	3	Pump Water	2	16			120.0	H2O SPACER
12/15/2012 13:37	4	Pump Spacer	2	24			138.0	MUDFLUSH SPACER
12/15/2012 13:42	5	Pump Water	5	20			317.0	H2O SPACER
12/15/2012 13:50	5,6	Drop Plug						DROP BOTTOM PLUG ON THE FLY WITNESSED BY CoMan
12/15/2012 13:50	6	Pump Lead Cement	5	194			525.0	MIX & PUMP 475 SACKS OF EXTENDACEM @ 11.5 PPG, 2.3 YOELD, 12.93 GAL/SK
12/15/2012 14:31	7	Pump Tail Cement	4	75			127.0	MIX & PUMP 245 SACKS OF FRACCEM @ 13.05 PPG, 1.74 YIELED, 8.3 GAL/SK
12/15/2012 14:45	8	Shutdown						ALL CEMENT PUMPED
12/15/2012 14:47	9	Clean Lines						WASHED PUMPS & LINES TO SHAKERS
12/15/2012 14:47	9	Drop Plug						DROPPED TOP PLUG WITNESSED BY CoMan
12/15/2012 14:54	10	Pump Displacement	8	110			42.0	DISPLACE WITH H2O
12/15/2012 15:11	11	Slow Rate	2	12			1125.0	SLOWED RATE TO BUMP PLUG
12/15/2012 15:15	12	Bump Plug					1315.0	BUMPED PLUG & PRESSURED UP 1000 OVER PER CoMan
12/15/2012 15:16	13	Shutdown					2686.0	SHUTDOWN & HEL PRESSURE FOR 5 MINUTE
12/15/2012 15:20	14	Check Floats					2775.0	FLOATS HELD WITH 2 BBLS BACK
12/15/2012 15:21	15	End Job						JOB SUCCESFULLY COMPLETED, FLOATS HELD WITH 2 BBLS BACK AND FULL RETURNS THROUGHOUT JOB WITH 1 BBLS H2O SPACER BACK TO SURFACE

The Road to Excellence Starts with Safety

Sold To #: 359915	Ship To #: 2968084	Quote #:	Sales Order #: 900076705
Customer: SYNERGY RESOURCES CORPORATION		Customer Rep: Montoya, Chris	
Well Name: SRC Pratt		Well #: 2KD	API/UWI #:
Field: Wattenberg	City (SAP): JOHNSTOWN	County/Parish: Weld	State: Colorado
Contractor: Ensign		Rig/Platform Name/Num: 226	
Job Purpose: Cement Production Casing			
Well Type: Development Well		Job Type: Cement Production Casing	
Sales Person: AARON, WESLEY		Srvc Supervisor: CLEMONS, WILLIAM	MBU ID Emp #: 407973

Job Personnel

HES Emp Name	Exp Hrs	Emp #	HES Emp Name	Exp Hrs	Emp #	HES Emp Name	Exp Hrs	Emp #
BURGESS, CODY Alan	5.0	511446	CLEMONS, WILLIAM Edward	0.0	407973	DIRKS, RICHARD E	0.0	485940
HOLMES, ANDREW Malcom	5.0	520802	SANSONI, NICHOLAS Sterling J	0.0	502962			

Equipment

HES Unit #	Distance-1 way	HES Unit #	Distance-1 way	HES Unit #	Distance-1 way	HES Unit #	Distance-1 way
10679720C	30 mile	11036301	30 mile	11142999	30 mile	11360865C	30 mile
11362287C	30 mile	11645065	30 mile	11764054C	30 mile		

Job Hours

Date	On Location Hours	Operating Hours	Date	On Location Hours	Operating Hours	Date	On Location Hours	Operating Hours
TOTAL			Total is the sum of each column separately					

Job

Formation Name	Top	Bottom	Called Out	Date	Time	Time Zone
Formation Depth (MD)			On Location	15 - Dec - 2012	06:00	MST
Form Type		BHST	Job Started	15 - Dec - 2012	11:00	MST
Job depth MD	7818. ft	Job Depth TVD	Job Completed	15 - Dec - 2012	13:25	MST
Water Depth		Wk Ht Above Floor	Departed Loc	15 - Dec - 2012	15:00	MST
Perforation Depth (MD)	From	To		15 - Dec - 2012	16:00	MST

Well Data

Description	New / Used	Max pressure psig	Size in	ID in	Weight lbm/ft	Thread	Grade	Top MD ft	Bottom MD ft	Top TVD ft	Bottom TVD ft
Open Hole				7.875				6.5	7800.	.	.
Production Casing	Unknown		4.5	4.	11.6			.	7789.	.	.
Surface Casing	Unknown		8.625	8.097	24.			.	606.	.	.

Fluid Data

Stage/Plug #: 1											
Fluid #	Stage Type	Fluid Name	Qty	Qty uom	Mixing Density lbm/gal	Yield ft ³ /sk	Mix Fluid Gal/sk	Rate bbl/min	Total Mix Fluid Gal/sk		

1	MUD FLUSH III	MUD FLUSH III - SBM (528788)	24.00	bbl	8.4	.0	.0	.0	
2	EXTENDACEM B1	EXTENDACEM (TM) SYSTEM (452981)	475.0	sacks	11.5	2.3	12.93		12.93
	12.93 Gal	FRESH WATER							
3	FracCem B2	FRACCEM (TM) SYSTEM (452963)	245.0	sacks	13.5	1.74	8.3		8.3
	8.3 Gal	FRESH WATER							
<i>The Information Stated Herein Is Correct</i>			<i>Customer Representative Signature</i>						

