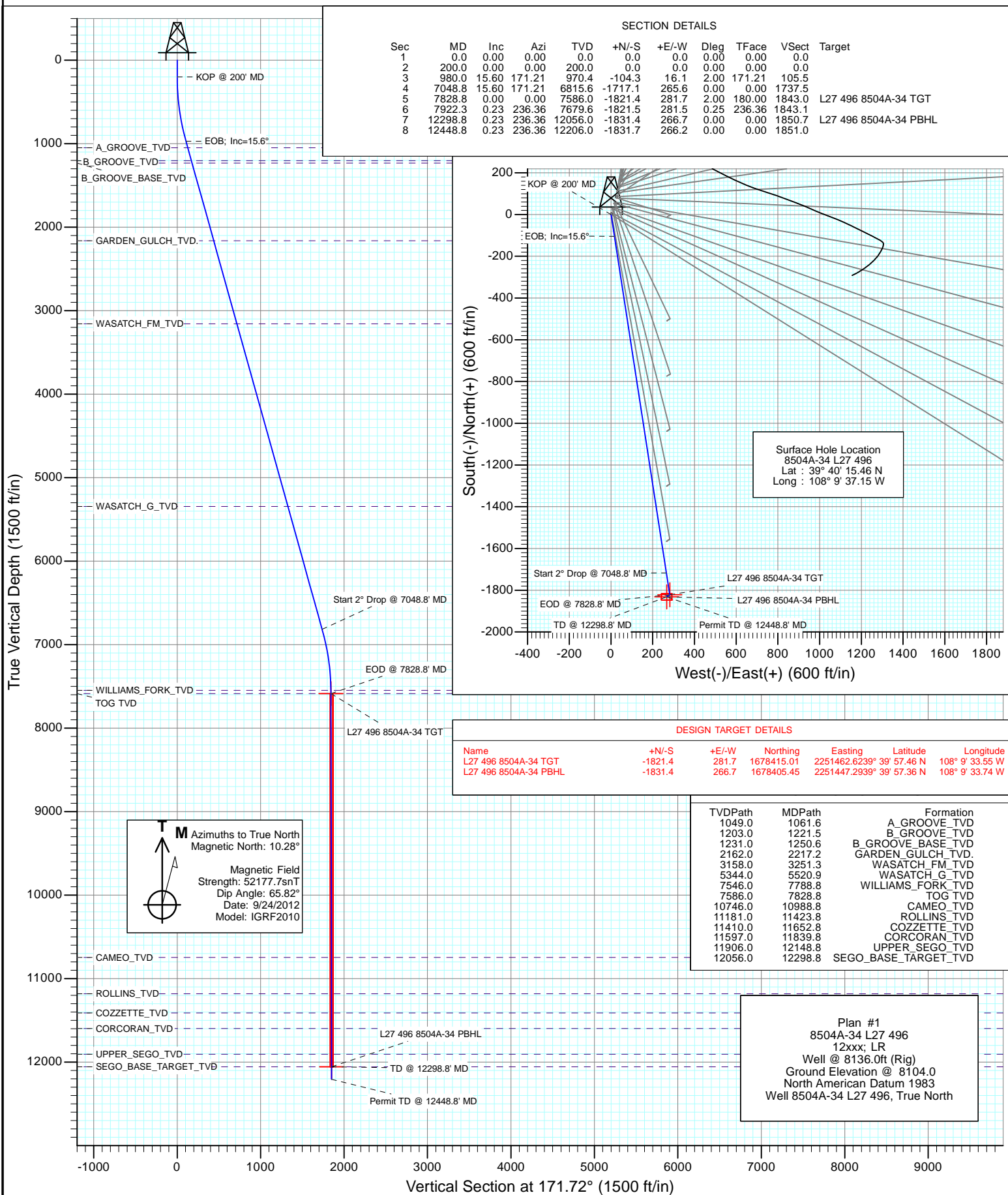


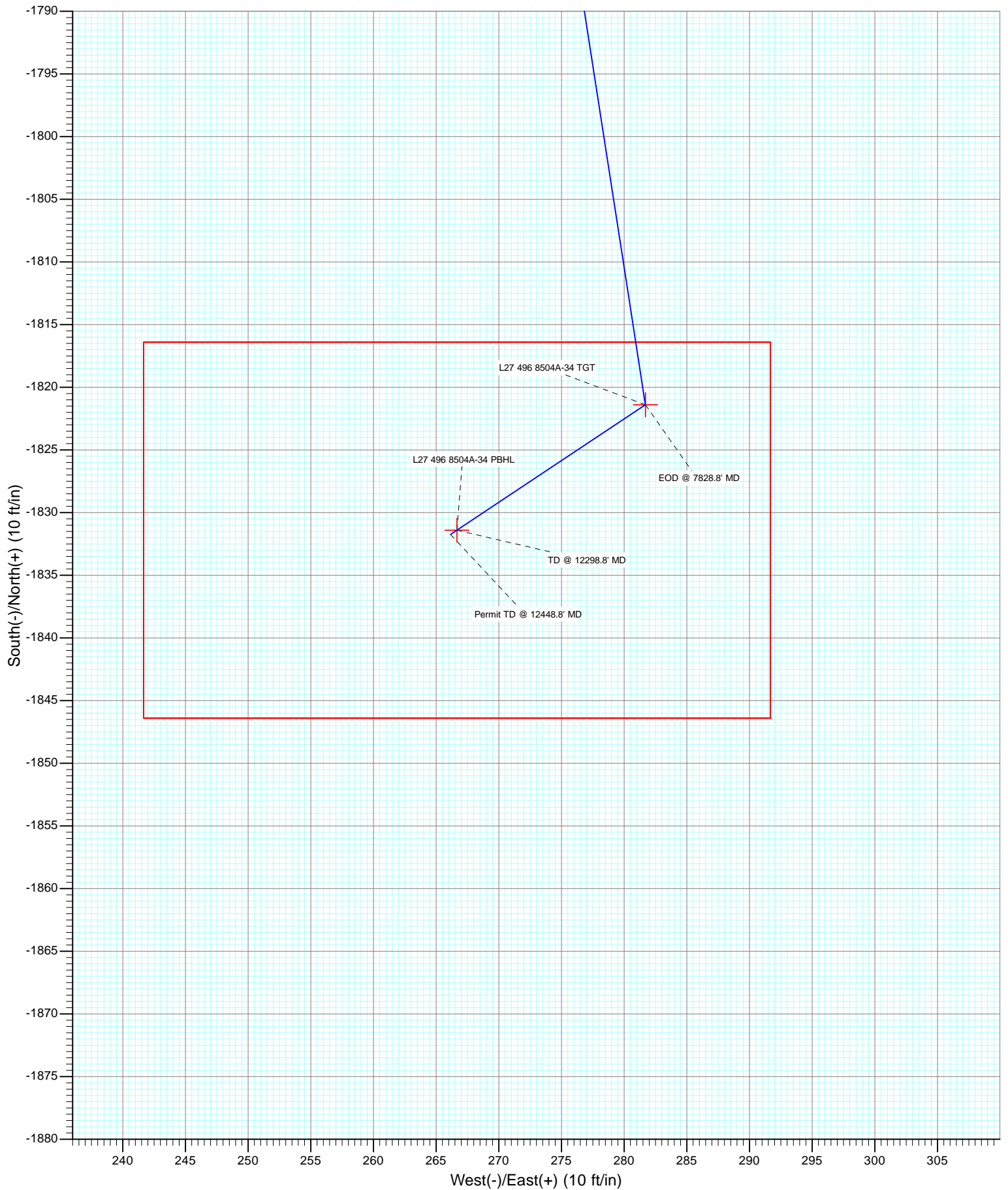


Project: Story Gulch
Site: S27-T4S-R96W (L27 496)
Well: 8504A-34 L27 496
Wellbore: DD
Design: Plan #1





Project: Story Gulch
Site: S27-T4S-R96W (L27 496)
Well: 8504A-34 L27 496
Wellbore: DD
Design: Plan #1



Cathedral Energy Services

Planning Report

Database:	USA EDM 5000 Multi Users DB	Local Co-ordinate Reference:	Well 8504A-34 L27 496
Company:	EnCana Oil & Gas (USA) Inc	TVD Reference:	Well @ 8136.0ft (Rig)
Project:	Story Gulch	MD Reference:	Well @ 8136.0ft (Rig)
Site:	S27-T4S-R96W (L27 496)	North Reference:	True
Well:	8504A-34 L27 496	Survey Calculation Method:	Minimum Curvature
Wellbore:	DD		
Design:	Plan #1		

Project	Story Gulch		
Map System:	US State Plane 1983	System Datum:	Mean Sea Level
Geo Datum:	North American Datum 1983		
Map Zone:	Colorado Central Zone		

Site		S27-T4S-R96W (L27 496)			
Site Position:		Northing:	1,680,404.44 ft	Latitude:	39° 40' 17.06 N
From:	Lat/Long	Easting:	2,251,282.88 ft	Longitude:	108° 9' 36.59 W
Position Uncertainty:	0.0 ft	Slot Radius:	13.200 in	Grid Convergence:	-1.68 °

Well	8504A-34 L27 496					
Well Position	+N/-S	0.0 ft	Northing:	1,680,243.88 ft	Latitude:	39° 40' 15.46 N
	+E/-W	0.0 ft	Easting:	2,251,234.37 ft	Longitude:	108° 9' 37.15 W
Position Uncertainty		0.0 ft	Wellhead Elevation:	ft	Ground Level:	8,104.0 ft

Wellbore	DD				
Magnetics	Model Name	Sample Date	Declination (°)	Dip Angle (°)	Field Strength (nT)
	IGRF2010	9/24/2012	10.28	65.82	52,178

Design	Plan #1			
Audit Notes:				
Version:	Phase:	PLAN	Tie On Depth:	0.0
Vertical Section:	Depth From (TVD) (ft)	+N/-S (ft)	+E/-W (ft)	Direction (°)
	0.0	0.0	0.0	171.72

Plan Sections										
Measured Depth (ft)	Inclination (°)	Azimuth (°)	Vertical Depth (ft)	+N/-S (ft)	+E/-W (ft)	Dogleg Rate (°/100ft)	Build Rate (°/100ft)	Turn Rate (°/100ft)	TFO (°)	Target
0.0	0.00	0.00	0.0	0.0	0.0	0.00	0.00	0.00	0.00	
200.0	0.00	0.00	200.0	0.0	0.0	0.00	0.00	0.00	0.00	
980.0	15.60	171.21	970.4	-104.3	16.1	2.00	2.00	0.00	171.21	
7,048.8	15.60	171.21	6,815.6	-1,717.1	265.6	0.00	0.00	0.00	0.00	
7,828.8	0.00	0.00	7,586.0	-1,821.4	281.7	2.00	-2.00	0.00	180.00	L27 496 8504A-34 TC
7,922.3	0.23	236.36	7,679.6	-1,821.5	281.5	0.25	0.25	-132.11	236.36	
12,298.8	0.23	236.36	12,056.0	-1,831.4	266.7	0.00	0.00	0.00	0.00	L27 496 8504A-34 PE
12,448.8	0.23	236.36	12,206.0	-1,831.7	266.2	0.00	0.00	0.00	0.00	

Cathedral Energy Services

Planning Report

Database:	USA EDM 5000 Multi Users DB	Local Co-ordinate Reference:	Well 8504A-34 L27 496
Company:	EnCana Oil & Gas (USA) Inc	TVD Reference:	Well @ 8136.0ft (Rig)
Project:	Story Gulch	MD Reference:	Well @ 8136.0ft (Rig)
Site:	S27-T4S-R96W (L27 496)	North Reference:	True
Well:	8504A-34 L27 496	Survey Calculation Method:	Minimum Curvature
Wellbore:	DD		
Design:	Plan #1		

Planned Survey									
Measured Depth (ft)	Inclination (°)	Azimuth (°)	Vertical Depth (ft)	+N/-S (ft)	+E/-W (ft)	Vertical Section (ft)	Dogleg Rate (°/100ft)	Build Rate (°/100ft)	Comments / Formations
0.0	0.00	0.00	0.0	0.0	0.0	0.0	0.00	0.00	
100.0	0.00	0.00	100.0	0.0	0.0	0.0	0.00	0.00	
200.0	0.00	0.00	200.0	0.0	0.0	0.0	0.00	0.00	KOP @ 200' MD
300.0	2.00	171.21	300.0	-1.7	0.3	1.7	2.00	2.00	
400.0	4.00	171.21	399.8	-6.9	1.1	7.0	2.00	2.00	
500.0	6.00	171.21	499.5	-15.5	2.4	15.7	2.00	2.00	
600.0	8.00	171.21	598.7	-27.6	4.3	27.9	2.00	2.00	
700.0	10.00	171.21	697.5	-43.0	6.7	43.5	2.00	2.00	
800.0	12.00	171.21	795.6	-61.9	9.6	62.6	2.00	2.00	
900.0	14.00	171.21	893.1	-84.1	13.0	85.1	2.00	2.00	
980.0	15.60	171.21	970.4	-104.3	16.1	105.5	2.00	2.00	EOB; Inc=15.6°
1,000.0	15.60	171.21	989.7	-109.6	17.0	110.9	0.00	0.00	
1,061.6	15.60	171.21	1,049.0	-126.0	19.5	127.5	0.00	0.00	A_GROOVE_TVD
1,100.0	15.60	171.21	1,086.0	-136.2	21.1	137.8	0.00	0.00	
1,200.0	15.60	171.21	1,182.3	-162.8	25.2	164.7	0.00	0.00	
1,221.5	15.60	171.21	1,203.0	-168.5	26.1	170.5	0.00	0.00	B_GROOVE_TVD
1,250.6	15.60	171.21	1,231.0	-176.2	27.3	178.3	0.00	0.00	B_GROOVE_BASE_TVD
1,300.0	15.60	171.21	1,278.6	-189.3	29.3	191.6	0.00	0.00	
1,400.0	15.60	171.21	1,374.9	-215.9	33.4	218.5	0.00	0.00	
1,500.0	15.60	171.21	1,471.2	-242.5	37.5	245.4	0.00	0.00	
1,600.0	15.60	171.21	1,567.6	-269.1	41.6	272.2	0.00	0.00	
1,700.0	15.60	171.21	1,663.9	-295.6	45.7	299.1	0.00	0.00	
1,800.0	15.60	171.21	1,760.2	-322.2	49.8	326.0	0.00	0.00	
1,900.0	15.60	171.21	1,856.5	-348.8	53.9	352.9	0.00	0.00	
2,000.0	15.60	171.21	1,952.8	-375.4	58.1	379.8	0.00	0.00	
2,100.0	15.60	171.21	2,049.1	-401.9	62.2	406.7	0.00	0.00	
2,200.0	15.60	171.21	2,145.5	-428.5	66.3	433.6	0.00	0.00	
2,217.2	15.60	171.21	2,162.0	-433.1	67.0	438.2	0.00	0.00	GARDEN_GULCH_TVD.
2,300.0	15.60	171.21	2,241.8	-455.1	70.4	460.5	0.00	0.00	
2,400.0	15.60	171.21	2,338.1	-481.7	74.5	487.4	0.00	0.00	
2,500.0	15.60	171.21	2,434.4	-508.2	78.6	514.3	0.00	0.00	
2,600.0	15.60	171.21	2,530.7	-534.8	82.7	541.2	0.00	0.00	
2,700.0	15.60	171.21	2,627.0	-561.4	86.8	568.0	0.00	0.00	
2,800.0	15.60	171.21	2,723.4	-588.0	90.9	594.9	0.00	0.00	
2,900.0	15.60	171.21	2,819.7	-614.5	95.0	621.8	0.00	0.00	
3,000.0	15.60	171.21	2,916.0	-641.1	99.2	648.7	0.00	0.00	
3,100.0	15.60	171.21	3,012.3	-667.7	103.3	675.6	0.00	0.00	
3,200.0	15.60	171.21	3,108.6	-694.3	107.4	702.5	0.00	0.00	
3,251.3	15.60	171.21	3,158.0	-707.9	109.5	716.3	0.00	0.00	WASATCH_FM_TVD
3,300.0	15.60	171.21	3,204.9	-720.8	111.5	729.4	0.00	0.00	
3,400.0	15.60	171.21	3,301.3	-747.4	115.6	756.3	0.00	0.00	
3,500.0	15.60	171.21	3,397.6	-774.0	119.7	783.2	0.00	0.00	
3,600.0	15.60	171.21	3,493.9	-800.6	123.8	810.1	0.00	0.00	
3,700.0	15.60	171.21	3,590.2	-827.1	127.9	837.0	0.00	0.00	
3,800.0	15.60	171.21	3,686.5	-853.7	132.0	863.8	0.00	0.00	
3,900.0	15.60	171.21	3,782.8	-880.3	136.1	890.7	0.00	0.00	
4,000.0	15.60	171.21	3,879.2	-906.9	140.3	917.6	0.00	0.00	
4,100.0	15.60	171.21	3,975.5	-933.5	144.4	944.5	0.00	0.00	
4,200.0	15.60	171.21	4,071.8	-960.0	148.5	971.4	0.00	0.00	
4,300.0	15.60	171.21	4,168.1	-986.6	152.6	998.3	0.00	0.00	
4,400.0	15.60	171.21	4,264.4	-1,013.2	156.7	1,025.2	0.00	0.00	
4,500.0	15.60	171.21	4,360.7	-1,039.8	160.8	1,052.1	0.00	0.00	

Cathedral Energy Services

Planning Report

Database:	USA EDM 5000 Multi Users DB	Local Co-ordinate Reference:	Well 8504A-34 L27 496
Company:	EnCana Oil & Gas (USA) Inc	TVD Reference:	Well @ 8136.0ft (Rig)
Project:	Story Gulch	MD Reference:	Well @ 8136.0ft (Rig)
Site:	S27-T4S-R96W (L27 496)	North Reference:	True
Well:	8504A-34 L27 496	Survey Calculation Method:	Minimum Curvature
Wellbore:	DD		
Design:	Plan #1		

Planned Survey

Measured Depth (ft)	Inclination (°)	Azimuth (°)	Vertical Depth (ft)	+N/-S (ft)	+E/-W (ft)	Vertical Section (ft)	Dogleg Rate (°/100ft)	Build Rate (°/100ft)	Comments / Formations
4,600.0	15.60	171.21	4,457.1	-1,066.3	164.9	1,079.0	0.00	0.00	
4,700.0	15.60	171.21	4,553.4	-1,092.9	169.0	1,105.9	0.00	0.00	
4,800.0	15.60	171.21	4,649.7	-1,119.5	173.1	1,132.7	0.00	0.00	
4,900.0	15.60	171.21	4,746.0	-1,146.1	177.3	1,159.6	0.00	0.00	
5,000.0	15.60	171.21	4,842.3	-1,172.6	181.4	1,186.5	0.00	0.00	
5,100.0	15.60	171.21	4,938.6	-1,199.2	185.5	1,213.4	0.00	0.00	
5,200.0	15.60	171.21	5,034.9	-1,225.8	189.6	1,240.3	0.00	0.00	
5,300.0	15.60	171.21	5,131.3	-1,252.4	193.7	1,267.2	0.00	0.00	
5,400.0	15.60	171.21	5,227.6	-1,278.9	197.8	1,294.1	0.00	0.00	
5,500.0	15.60	171.21	5,323.9	-1,305.5	201.9	1,321.0	0.00	0.00	
5,520.9	15.60	171.21	5,344.0	-1,311.1	202.8	1,326.6	0.00	0.00	WASATCH_G_TVD
5,600.0	15.60	171.21	5,420.2	-1,332.1	206.0	1,347.9	0.00	0.00	
5,700.0	15.60	171.21	5,516.5	-1,358.7	210.1	1,374.8	0.00	0.00	
5,800.0	15.60	171.21	5,612.8	-1,385.2	214.2	1,401.7	0.00	0.00	
5,900.0	15.60	171.21	5,709.2	-1,411.8	218.4	1,428.5	0.00	0.00	
6,000.0	15.60	171.21	5,805.5	-1,438.4	222.5	1,455.4	0.00	0.00	
6,100.0	15.60	171.21	5,901.8	-1,465.0	226.6	1,482.3	0.00	0.00	
6,200.0	15.60	171.21	5,998.1	-1,491.5	230.7	1,509.2	0.00	0.00	
6,300.0	15.60	171.21	6,094.4	-1,518.1	234.8	1,536.1	0.00	0.00	
6,400.0	15.60	171.21	6,190.7	-1,544.7	238.9	1,563.0	0.00	0.00	
6,500.0	15.60	171.21	6,287.1	-1,571.3	243.0	1,589.9	0.00	0.00	
6,600.0	15.60	171.21	6,383.4	-1,597.8	247.1	1,616.8	0.00	0.00	
6,700.0	15.60	171.21	6,479.7	-1,624.4	251.2	1,643.7	0.00	0.00	
6,800.0	15.60	171.21	6,576.0	-1,651.0	255.3	1,670.6	0.00	0.00	
6,900.0	15.60	171.21	6,672.3	-1,677.6	259.5	1,697.5	0.00	0.00	
7,000.0	15.60	171.21	6,768.6	-1,704.1	263.6	1,724.3	0.00	0.00	
7,048.8	15.60	171.21	6,815.6	-1,717.1	265.6	1,737.5	0.00	0.00	Start 2° Drop @ 7048.8' MD
7,100.0	14.58	171.21	6,865.1	-1,730.3	267.6	1,750.8	2.00	-2.00	
7,200.0	12.58	171.21	6,962.3	-1,753.5	271.2	1,774.3	2.00	-2.00	
7,300.0	10.58	171.21	7,060.2	-1,773.3	274.3	1,794.3	2.00	-2.00	
7,400.0	8.58	171.21	7,158.8	-1,789.7	276.8	1,811.0	2.00	-2.00	
7,500.0	6.58	171.21	7,258.0	-1,802.8	278.8	1,824.1	2.00	-2.00	
7,600.0	4.58	171.21	7,357.5	-1,812.4	280.3	1,833.9	2.00	-2.00	
7,700.0	2.58	171.21	7,457.3	-1,818.5	281.3	1,840.1	2.00	-2.00	
7,788.8	0.80	171.21	7,546.0	-1,821.1	281.7	1,842.7	2.00	-2.00	WILLIAMS_FORK_TVD
7,800.0	0.58	171.21	7,557.2	-1,821.3	281.7	1,842.8	2.00	-2.00	
7,828.8	0.00	0.00	7,586.0	-1,821.4	281.7	1,843.0	2.00	-2.00	EOD @ 7828.8' MD - TOG TVD
7,900.0	0.18	236.36	7,657.2	-1,821.5	281.6	1,843.0	0.25	0.25	
7,922.3	0.23	236.36	7,679.6	-1,821.5	281.5	1,843.1	0.25	0.25	
8,000.0	0.23	236.36	7,757.2	-1,821.7	281.3	1,843.2	0.00	0.00	
8,100.0	0.23	236.36	7,857.2	-1,821.9	280.9	1,843.4	0.00	0.00	
8,200.0	0.23	236.36	7,957.2	-1,822.1	280.6	1,843.5	0.00	0.00	
8,300.0	0.23	236.36	8,057.2	-1,822.4	280.3	1,843.7	0.00	0.00	
8,400.0	0.23	236.36	8,157.2	-1,822.6	279.9	1,843.9	0.00	0.00	
8,500.0	0.23	236.36	8,257.2	-1,822.8	279.6	1,844.1	0.00	0.00	
8,600.0	0.23	236.36	8,357.2	-1,823.0	279.2	1,844.2	0.00	0.00	
8,700.0	0.23	236.36	8,457.2	-1,823.3	278.9	1,844.4	0.00	0.00	
8,800.0	0.23	236.36	8,557.2	-1,823.5	278.6	1,844.6	0.00	0.00	
8,900.0	0.23	236.36	8,657.2	-1,823.7	278.2	1,844.8	0.00	0.00	
9,000.0	0.23	236.36	8,757.2	-1,823.9	277.9	1,844.9	0.00	0.00	
9,100.0	0.23	236.36	8,857.2	-1,824.2	277.5	1,845.1	0.00	0.00	
9,200.0	0.23	236.36	8,957.2	-1,824.4	277.2	1,845.3	0.00	0.00	

Cathedral Energy Services

Planning Report

Database:	USA EDM 5000 Multi Users DB	Local Co-ordinate Reference:	Well 8504A-34 L27 496
Company:	EnCana Oil & Gas (USA) Inc	TVD Reference:	Well @ 8136.0ft (Rig)
Project:	Story Gulch	MD Reference:	Well @ 8136.0ft (Rig)
Site:	S27-T4S-R96W (L27 496)	North Reference:	True
Well:	8504A-34 L27 496	Survey Calculation Method:	Minimum Curvature
Wellbore:	DD		
Design:	Plan #1		

Planned Survey									
Measured Depth (ft)	Inclination (°)	Azimuth (°)	Vertical Depth (ft)	+N/-S (ft)	+E/-W (ft)	Vertical Section (ft)	Dogleg Rate (°/100ft)	Build Rate (°/100ft)	Comments / Formations
9,300.0	0.23	236.36	9,057.2	-1,824.6	276.9	1,845.5	0.00	0.00	
9,400.0	0.23	236.36	9,157.2	-1,824.8	276.5	1,845.6	0.00	0.00	
9,500.0	0.23	236.36	9,257.2	-1,825.1	276.2	1,845.8	0.00	0.00	
9,600.0	0.23	236.36	9,357.2	-1,825.3	275.8	1,846.0	0.00	0.00	
9,700.0	0.23	236.36	9,457.2	-1,825.5	275.5	1,846.2	0.00	0.00	
9,800.0	0.23	236.36	9,557.2	-1,825.7	275.2	1,846.3	0.00	0.00	
9,900.0	0.23	236.36	9,657.2	-1,826.0	274.8	1,846.5	0.00	0.00	
10,000.0	0.23	236.36	9,757.2	-1,826.2	274.5	1,846.7	0.00	0.00	
10,100.0	0.23	236.36	9,857.2	-1,826.4	274.1	1,846.9	0.00	0.00	
10,200.0	0.23	236.36	9,957.2	-1,826.7	273.8	1,847.0	0.00	0.00	
10,300.0	0.23	236.36	10,057.2	-1,826.9	273.5	1,847.2	0.00	0.00	
10,400.0	0.23	236.36	10,157.2	-1,827.1	273.1	1,847.4	0.00	0.00	
10,500.0	0.23	236.36	10,257.2	-1,827.3	272.8	1,847.6	0.00	0.00	
10,600.0	0.23	236.36	10,357.2	-1,827.6	272.4	1,847.7	0.00	0.00	
10,700.0	0.23	236.36	10,457.2	-1,827.8	272.1	1,847.9	0.00	0.00	
10,800.0	0.23	236.36	10,557.2	-1,828.0	271.8	1,848.1	0.00	0.00	
10,900.0	0.23	236.36	10,657.2	-1,828.2	271.4	1,848.3	0.00	0.00	
10,988.8	0.23	236.36	10,746.0	-1,828.4	271.1	1,848.4	0.00	0.00	CAMEO_TVD
11,000.0	0.23	236.36	10,757.2	-1,828.5	271.1	1,848.4	0.00	0.00	
11,100.0	0.23	236.36	10,857.2	-1,828.7	270.7	1,848.6	0.00	0.00	
11,200.0	0.23	236.36	10,957.2	-1,828.9	270.4	1,848.8	0.00	0.00	
11,300.0	0.23	236.36	11,057.2	-1,829.1	270.1	1,849.0	0.00	0.00	
11,400.0	0.23	236.36	11,157.2	-1,829.4	269.7	1,849.1	0.00	0.00	
11,423.8	0.23	236.36	11,181.0	-1,829.4	269.6	1,849.2	0.00	0.00	ROLLINS_TVD
11,500.0	0.23	236.36	11,257.2	-1,829.6	269.4	1,849.3	0.00	0.00	
11,600.0	0.23	236.36	11,357.2	-1,829.8	269.0	1,849.5	0.00	0.00	
11,652.8	0.23	236.36	11,410.0	-1,829.9	268.9	1,849.6	0.00	0.00	COZZETTE_TVD
11,700.0	0.23	236.36	11,457.2	-1,830.0	268.7	1,849.7	0.00	0.00	
11,800.0	0.23	236.36	11,557.2	-1,830.3	268.4	1,849.8	0.00	0.00	
11,839.8	0.23	236.36	11,597.0	-1,830.4	268.2	1,849.9	0.00	0.00	CORCORAN_TVD
11,900.0	0.23	236.36	11,657.2	-1,830.5	268.0	1,850.0	0.00	0.00	
12,000.0	0.23	236.36	11,757.2	-1,830.7	267.7	1,850.2	0.00	0.00	
12,100.0	0.23	236.36	11,857.2	-1,831.0	267.3	1,850.4	0.00	0.00	
12,148.8	0.23	236.36	11,906.0	-1,831.1	267.2	1,850.5	0.00	0.00	UPPER_SEGO_TVD
12,200.0	0.23	236.36	11,957.2	-1,831.2	267.0	1,850.5	0.00	0.00	
12,298.8	0.23	236.36	12,056.0	-1,831.4	266.7	1,850.7	0.00	0.00	TD @ 12298.8' MD - SEGO_BASE_TARGET_1
12,300.0	0.23	236.36	12,057.2	-1,831.4	266.7	1,850.7	0.00	0.00	
12,400.0	0.23	236.36	12,157.2	-1,831.6	266.3	1,850.9	0.00	0.00	
12,448.8	0.23	236.36	12,206.0	-1,831.7	266.2	1,851.0	0.00	0.00	Permit TD @ 12448.8' MD

Cathedral Energy Services

Planning Report

Database:	USA EDM 5000 Multi Users DB	Local Co-ordinate Reference:	Well 8504A-34 L27 496
Company:	EnCana Oil & Gas (USA) Inc	TVD Reference:	Well @ 8136.0ft (Rig)
Project:	Story Gulch	MD Reference:	Well @ 8136.0ft (Rig)
Site:	S27-T4S-R96W (L27 496)	North Reference:	True
Well:	8504A-34 L27 496	Survey Calculation Method:	Minimum Curvature
Wellbore:	DD		
Design:	Plan #1		

Targets									
Target Name									
- hit/miss target	Dip Angle	Dip Dir.	TVD	+N/-S	+E/-W	Northing	Easting	Latitude	Longitude
- Shape	(°)	(°)	(ft)	(ft)	(ft)	(ft)	(ft)		
L27 496 8504A-34 PBHI	0.00	0.00	12,056.0	-1,831.4	266.7	1,678,405.45	2,251,447.29	39° 39' 57.36 N	108° 9' 33.74 W
- plan hits target center									
- Rectangle (sides W30.0 H50.0 D0.0)									
L27 496 8504A-34 TGT	0.00	0.00	7,586.0	-1,821.4	281.7	1,678,415.01	2,251,462.62	39° 39' 57.46 N	108° 9' 33.55 W
- plan hits target center									
- Point									

Formations						
Measured Depth	Vertical Depth	Name	Lithology	Dip	Dip Direction	
(ft)	(ft)			(°)	(°)	
1,061.6	1,049.0	A_GROOVE_TVD				
1,221.5	1,203.0	B_GROOVE_TVD				
1,250.6	1,231.0	B_GROOVE_BASE_TVD				
2,217.2	2,162.0	GARDEN_GULCH_TVD.				
3,251.3	3,158.0	WASATCH_FM_TVD				
5,520.9	5,344.0	WASATCH_G_TVD				
7,788.8	7,546.0	WILLIAMS_FORK_TVD				
7,828.8	7,586.0	TOG TVD				
10,988.8	10,746.0	CAMEO_TVD				
11,423.8	11,181.0	ROLLINS_TVD				
11,652.8	11,410.0	COZZETTE_TVD				
11,839.8	11,597.0	CORCORAN_TVD				
12,148.8	11,906.0	UPPER_SEGO_TVD				
12,298.8	12,056.0	SEGO_BASE_TARGET_TVD				

Plan Annotations				
Measured Depth	Vertical Depth	Local Coordinates		Comment
(ft)	(ft)	+N/-S (ft)	+E/-W (ft)	
200.0	200.0	0.0	0.0	KOP @ 200' MD
980.0	970.4	-104.3	16.1	EOB; Inc=15.6°
7,048.8	6,815.6	-1,717.1	265.6	Start 2° Drop @ 7048.8' MD
7,828.8	7,586.0	-1,821.4	281.7	EOD @ 7828.8' MD
12,298.8	12,056.0	-1,831.4	266.7	TD @ 12298.8' MD
12,448.8	12,206.0	-1,831.7	266.2	Permit TD @ 12448.8' MD