

T4S, R96W, 6th P.M.

Encana OIL & GAS (USA) INC.

1953 Brass Cap
0.7' High, Mound of
Stones, Steel Post
Lat: 39.680564°
Long: 108.164133°

1953 Brass Cap
0.5' High
Lat: 39.680561°
Long: 108.154725°

1953 Brass Cap
0.8' High, Steel
Post
Lat: 39.680583°
Long: 108.145383°

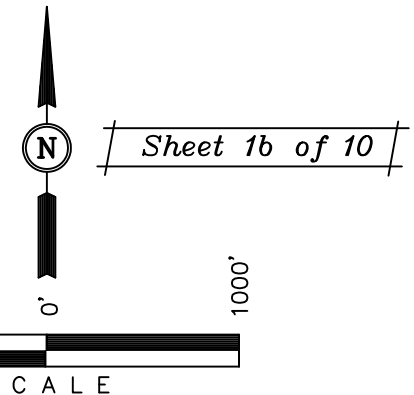
Well location, SG 8504A-34 L27 496 (SURFACE LOCATION), located as shown in the NW 1/4 SW 1/4 of Section 27, T4S, R96W, 6th P.M., Garfield County, Colorado.

BASIS OF ELEVATION

BENCH MARK (H79) LOCATED IN THE NE 1/4 OF SECTION 35, T4S, R98W, 6th P.M. TAKEN FROM THE BULL FORK QUADRANGLE, COLORADO, 7.5 MINUTE SERIES (TOPO GRAPHICAL MAP) PUBLISHED BY THE UNITED STATES DEPARTMENT OF THE INTERIOR, GEOLOGICAL SURVEY. SAID ELEVATION IS MARKED AS BEING 8535 FEET.

BASIS OF BEARINGS

BASIS OF BEARINGS IS A G.P.S. OBSERVATION.



CERTIFICATE

THIS IS TO CERTIFY THAT THE ABOVE PLAT WAS PREPARED FROM FIELD NOTES OF ACTUAL SURVEYS MADE BY ME OR UNDER MY SUPERVISION AND THAT THE SAME ARE TRUE AND CORRECT TO THE BEST OF MY KNOWLEDGE AND BELIEF.

REGISTERED LAND SURVEYOR
REGISTRATION NO. 17492
STATE OF COLORADO

REVISED: 12-19-12

UINTAH ENGINEERING & LAND SURVEYING
85 SOUTH 200 EAST - VERNAL, UTAH 84078
(435) 789-1017

1953 Brass Cap
0.9' High, Steel
Post
Lat: 39.666061°
Long: 108.164131°

S89°48'58"W 2656.58' (Meas.) S89°48'19"W 2625.08' (Meas.)
Target Bottom Hole

NOTE:
THE PROPOSED TARGET BOTTOM HOLE FOR THIS WELL IS LOCATED IN THE NE 1/4 NW 1/4 OF SECTION 34, T4S, R96W, 6th P.M. AT 48' FNL 1340' FWL. IT BEARS S08°24'36"E 1SG 851.51' FROM THE PROPOSED WELL HEAD.

PDOP = 1.5

NAD 83 (SURFACE LOCATION)
LATITUDE = 39°40'15.46" (39.670961)
LONGITUDE = 108°09'37.15" (108.160319)
NAD 27 (SURFACE LOCATION)
LATITUDE = 39°40'15.55" (39.670986)
LONGITUDE = 108°09'34.86" (108.159683)

LEGEND:

- └─ = 90° SYMBOL
- = PROPOSED WELL HEAD.
- ▲ = SECTION CORNERS LOCATED.

SCALE 1" = 1000'	DATE SURVEYED: 07-31-12	DATE DRAWN: 09-27-12
PARTY B.B. B.J. M.D.	REFERENCES G.L.O. PLAT	
WEATHER WARM	FILE ENCANA OIL & GAS (USA) INC.	

SG 8504A-34 L27 496
SURFACE LOCATION

T4S, R96W, 6th P.M.

Encana OIL & GAS (USA) INC.

1953 Brass Cap
0.9' High, Steel
Post
Lat: 39.666061°
Long: 108.164131°

S89°48'58"W 2656.58' (Meas.)

S89°48'19"W - 2625.08' (Meas.)

SG 8504A-34 L27 496
Target Bottom Hole

1953 Brass Cap
0.5' High, 5/8"
Rebar
Lat: 39.666069°
Long: 108.154697°

1953 Brass Cap
1.4' High, "T"
Post, 5/8" Rebar
Lat: 39.666077°
Long: 108.145376°

NOTE:
THE PROPOSED TARGET BOTTOM HOLE
BEARS S08°24'36"E 1SG 851.51' FROM THE
PROPOSED WELL HEAD WHICH IS LOCATED IN
THE NW 1/4 SW 1/4 OF SECTION 27, T4S,
R96W, 6th P.M. AT 1784' FSL 1073' FWL.

1953 Brass Cap
0.3' High, Mound
of Stones, Steel
Post
Lat: 39.658819°
Long: 108.164128°

34

COCO 061138
COCO 069557

1953 Brass Cap
0.6' High, Stones,
Steel Post
Lat: 39.658832°
Long: 108.145376°

1953 Brass Cap
0.2' High, E-W
Fenceline, Mound
of Stones, Steel Post
Lat: 39.651322°
Long: 108.164147°

COCO 069557

1953 Brass Cap
0.3' High, Stones
Lat: 39.651344°
Long: 108.154747°

C.C. 1971 Brass
Cap 0.2' High,
Pile of Stones
Lat: 39.651392°
Long: 108.146142°

1953 Brass Cap
0.3' High, Steel
Post
Lat: 39.651387°
Long: 108.145378°

REVISED: 12-19-12

T4S

T5S

S89°41'50"W - 2647.86' (Meas.)

S89°31'41"W - 2639.34' (Meas.)

True Position

LEGEND:

└─ = 90° SYMBOL

● = PROPOSED WELL HEAD.

▲ = SECTION CORNERS LOCATED.

△ = SECTION CORNERS RE-ESTABLISHED. (Not Set on Ground.)

LINE TABLE

LINE	DIRECTION	LENGTH
L1	N89°31'41"E	215.17'

NAD 83 (TARGET BOTTOM HOLE)

LATITUDE = 39°39'57.36" (39.665933)
LONGITUDE = 108°09'33.74" (108.159372)

NAD 27 (TARGET BOTTOM HOLE)

LATITUDE = 39°39'57.45" (39.665958)
LONGITUDE = 108°09'31.45" (108.158736)

Well location, SG 8504A-34 L27 496 (TARGET
BOTTOM HOLE), located as shown in the NE 1/4
NW 1/4 of Section 34, T4S, R96W, 6th P.M.,
Garfield County, Colorado.

BASIS OF ELEVATION

BENCH MARK (H79) LOCATED IN THE NE 1/4 OF SECTION
35, T4S, R98W, 6th P.M. TAKEN FROM THE BULL FORK
QUADRANGLE, COLORADO, 7.5 MINUTE SERIES (TOPO
GRAPHICAL MAP) PUBLISHED BY THE UNITED STATES
DEPARTMENT OF THE INTERIOR, GEOLOGICAL SURVEY.
SAID ELEVATION IS MARKED AS BEING 8535 FEET.

BASIS OF BEARINGS

BASIS OF BEARINGS IS A G.P.S. OBSERVATION.



Sheet 1c of 10



SCALE

CERTIFICATE

THIS IS TO CERTIFY THAT THE ABOVE PLAT WAS PREPARED FROM
FIELD NOTES OF ACTUAL SURVEYS MADE BY ME OR UNDER MY
SUPERVISION AND THAT THE SAME ARE TRUE AND CORRECT TO THE
BEST OF MY KNOWLEDGE AND BELIEF.

REGISTERED LAND SURVEYOR
REGISTRATION NO. 17492
STATE OF COLORADO

UINTAH ENGINEERING & LAND SURVEYING
85 SOUTH 200 EAST - VERNAL, UTAH 84078
(435) 789-1017

SCALE 1" = 1000'	DATE SURVEYED: 07-31-12	DATE DRAWN: 09-27-12
PARTY B.B. B.J. M.D.	REFERENCES G.L.O. PLAT	
WEATHER WARM	FILE ENCANA OIL & GAS (USA) INC.	