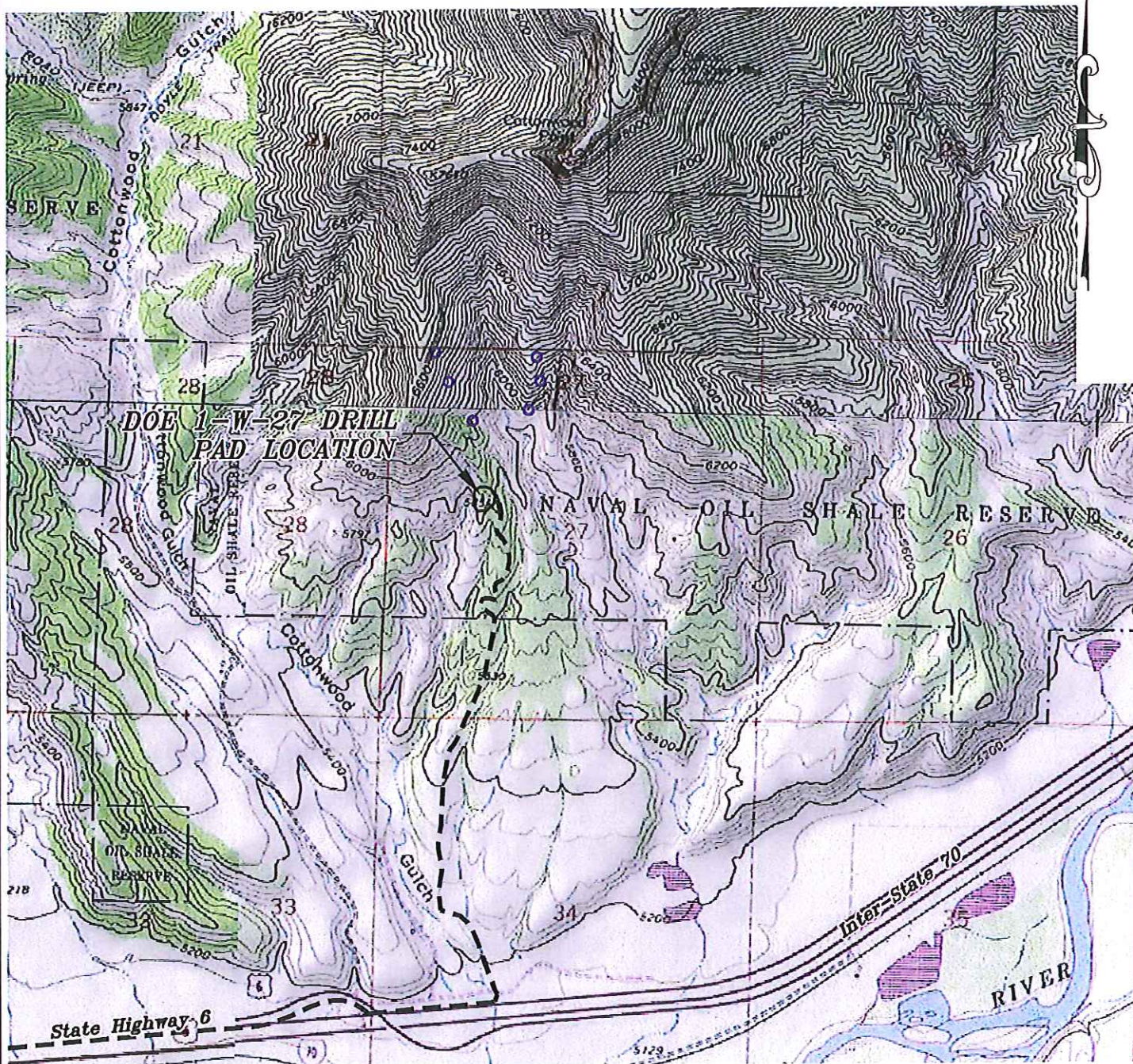


Section 27  
T. 6 S., R 95 W



ACCESS DESCRIPTION:  
FROM THE INTERSECTION OF 1ST STREET AND COUNTY ROAD 215 AT PARACHUTE, PROCEED IN A NORTHEASTERLY DIRECTION ON STATE HIGHWAY 6,  $\pm 3.4$  MILES TO AN INTERSECTION WITH A DIRT/GRAVEL ROAD, PROCEED LEFT IN A NORTHEASTERLY DIRECTION,  $\pm 0.3$  MILES TO AN INTERSECTION WITH A DIRT/GRAVEL ROAD, PROCEED LEFT IN A NORTHERLY DIRECTION,  $\pm 1.5$  MILES TO THE EXISTING DOE 1-W-27 DRILL PAD LOCATION, AS SHOWN HEREON.

136 East Third Street  
Rifle, Colorado 81650  
Ph. (970) 625-2720  
Fax (970) 625-2773



**BOOKCLIFF**  
Survey Services, Inc.

SCALE: 1" = 2000'  
DATE: 10/25/12  
PLAT: 5 of 7  
PROJECT: Valley  
DFT: cws

Construction Plan Prepared for:



WPX Energy Rocky Mountain, LLC

DOE 1-W-27 Drill Pad - Plat 5  
ACCESS ROAD & TOPO MAP